

Village & Valley

SUMMER 2018

The magazine of the
Rowlands Castle Association





Richard C Arnold
 Optometrists & Contact Lens Practitioners
 EST 1890



Petersfield

ARNOLD & SON 
Est 1890

www.rcarnold.co.uk
 3-4 Exchange Bldgs, High St,
 GU32 3JU

Tel: 01730 263302

Midhurst

arnolds opticians limited
www.arnoldsopticians.co.uk
 Ewen House, Red Lion St,
 GU29 9PB

Tel: 01730 814035

Cowplain

arnolds opticians limited
www.arnoldsopticians.co.uk
 69 London Road,
 PO8 8UJ

Tel: 02392 250641

**Always the choice for quality sympathetic
 eye care from our team of
 qualified Optometrists & Dispensing Opticians.
 You can relax knowing your eyes are in good hands!**



Village&Valley

The magazine of the Rowlands Castle Association

CONTENTS

	5	Message from Chair
NEWS	6	Parish Council News
	8	East Hants District Council
	10	Neighbourhood Plan
	12	Heritage Centre
EVENTS & CLUBS	14	Community and RCA events
	16	Village Picnic in Pictures
	20	St Hubert's
	22	Women's Institute
	22	U3A
COMMUNITY	24	Church on the Green
	25	Village in Pictures
	26	St John's Church
	27	Good neighbours
	28	Emsworth Flower Club
	30	From the Green
	34	Eco Friendly
	36	The Centre Spread
	38	Railway History
	40	Local Knowledge
	42	Girl Guiding
	44	St John's Primary School
SCIENCE & NATURE	46	Matter of Interest
	48	Local Birdlife
	50	Seasonal Notes
SPORT	52	Mountain Biking
	56	Cricket
FURTHER AFIELD	58	Great days out - regional events
	68	Numbers to know

/ CONTRIBUTION GUIDELINES

The Village magazine is published three times a year by the RCA. The aims of the RCA are to act as a channel of communication for the village, to conserve its character and to enhance the life of its residents.

Contributions should be between 200-300 words and you should provide at least one image (max 10MB) to accompany your article. Please provide the image(s) as a separate file, not as part of a Word doc.

PLEASE NOTE the deadlines below:

SPRING issue: 18th March
SUMMER issue: 18th June
AUTUMN issue: 18th October

PLEASE BE AWARE:

Due to print deadlines late submissions cannot be considered for publication.

/ ADVERTISE IN THE MAGAZINE

The village magazine is funded entirely by advertising. If you would like to promote your business or services and advertise on these pages please contact Prue Amner on the address below:
prue.amner@gmail.com

/ THE GRAPEVINE

Grapevine is the village messaging service that sends out emails to those that have signed up about events and important information connected to the village. To sign up, send a blank email to:
grapevine@rowlandscastle.com

/ COVER PICTURE

Mid-summer evening looking towards Finchdean

/ YOUR RCA COMMITTEE 2018

Fiona Charlesworth (Chair)
chair@rowlandscastle.com
9241 3865

Martha Dombey (Treasurer)
9241 0030

Sue Leonard (Secretary)
secretary@rowlandscastle.com
9241 2108

Gordon Charlesworth
9241 3865

Sue Morrison
07795 566090

Joyce Jacobs
9241 3738

Helen Penfold
9241 3233

Rodney Duggua
075050 42723

Ben Brittain
9241 3043

June Halford
9241 2674

Gillian Lovegrove (Webmaster)
webmaster@rowlandscastle.com
92412426

Kelvin Schäfli (Magazine editor)
editor@rowlandscastle.com

RCA WEBSITE

www.rowlandscastle.com

MESSAGE FROM THE CHAIR

Fiona Charlesworth

What a lovely day we had for the May Day picnic and BBQ! Thank you to all those who supported the picnic, we were able to give the Rowans Hospice a cheque for £1,000.

The Village Fair will be over by the time you read this and as always I know will have been a fantastic day. Many thanks to the hard working Village Fair Committee who always give the whole village such a great time. Thank you. (The Rowlands Castle Association Committee are completely separate from the Village Fair Committee)

The next RCA event is the always popular annual quiz on Saturday 20th October. Save the date!

On the 1st September I will be stepping down as Chair of the RCA Committee and Helen Penfold has volunteered to take over. Many thanks to all the committee for their support during my time as Chair.

Enjoy the rest of the summer!

With all best wishes
Fiona Charlesworth

chairman@rowlandscastle.com
07767 867603
02392 413865



SUMMER REPORT

Clerk to the Council
Lisa Walker

General Council Matters

In April, we bid farewell to 2 councillors, David Symonds and Bob Raley. We thank them for their hard work on behalf of the community and welcome 2 newly-co-opted members in their place, John Smart and Frank Ball. This leaves the Council with one remaining vacancy so if you'd like to get involved, do let us know – see www.rowlandscastlepc.org.uk for contact details.

Electoral Review of East Hants District by the Local Govt Boundary Commission for England

After its strong arguments in favour of such an approach, RCPC was very pleased to see the Commission ended up recommending Rowlands Castle remain one Ward, now incorporating Finchdean and Idsworth, represented by one district councillor. This brings Ward boundaries into line with those for Parish Wards and County Divisions.

New Developments

RCPC continues to attend regular meetings with Bellway and local representatives, and Cllr Liz Longman acts as initial contact with the Site Manager. This has helped RCPC keep residents informed of utility-related works which might affect Whichers Gate Rd and Redhill Rd, subject to Bellway being informed (which doesn't always happen). Likewise, RCPC liaises informally with Bargate's contractors to glean information about roads works nearer the village centre.

With the Nicholas King redevelopment of the old Keyline site also underway, RCPC is aware that the village has been very busy with construction traffic and resultant mud on roads etc. We understand contractors do all they can to keep mud/dust down but recent dry conditions have exacerbated the problem. It is with disappointment RCPC notes that, in permitting both applications (the Keyline site on appeal), EHDC, in conjunction with HCC, has effectively permitted 2 different plans for the same driveway layout which will necessitate a degree of re-working and additional disruption.

You may also like to know a decision on an Application to construct 10 'retirement' bungalows off Oaklands Avenue is awaited. RCPC is keen to encourage links from these developments to nearby rights of way (eg Bridleway 24) to help connect residents of new developments with the village centre and encourage them to walk/cycle to village facilities as an alternative to using their vehicle(s).

Developers' Contributions

The Annual Parish Mtg (APM) on 23 April was well-attended. It included presentations from 4 of the 5 organisations (St John's Church, the Church on The Green, RC Heritage Centre and St Hubert's Church, Idsworth which have expressed interest in the contributions set

aside for Community Facilities. The subsequent vote on priorities showed support for projects across the board, including RC Scout Hut which was not able to present at the Mtg. We now await EHDC's completion of its re-organisation of the management of these contributions so we can progress allocation of funds, as well as exploring other sources such as Community Infrastructure Levy monies from wider afield. RCPC continues to stress the importance of such contributions set aside for Transport measures being spent in as 'joined up' a way as possible, with maximum possible consultation with local residents.

Traffic Measures

We remain anxious that satisfactory measures are put in place to help Whichers Gate Road/ the mini-roundabout system/Manor Lodge Road cope with the significant increase in traffic anticipated from developments in north Emsworth and East of Horndean, as well as those within this Parish. As the Chairman stated at the APM, if you have views on these matters please get involved now to ensure local residents' voices are heard as loudly as possible by local authorities anxious to comply with Government housing objectives; don't leave it until it's too late.

RCPC has limited powers and can only fund relatively minor traffic measures itself. That said, it has submitted proposals to Hants Highways under its Community-funded Initiative for additional railings on Manor Lodge Rd and speed control measures on Finchdean Rd. We have now received Highways' response and are progressing matters with its officers, subject

to the necessary safety checks. Finally, we still await EHDC's consultation on proposed parking restrictions on Redhill Rd, Links Lane and Uplands Rd and will publicise this as widely as possible when its launched.

Finchdean, Community Noticeboard and Trees

The telephone Kiosk on Finchdean Green has benefited from a much-needed revamp and is back to its former glory. We await the arrival of the new Community Noticeboard which will be located on the other side of The Green, between the bus shelter and post box. We also await developers' contributions specifically allocated for tree works around the Parish in accordance with last year's tree surveys.

Recreation Ground

Cllr David Hooper now chairs the Rec Ground Management Committee, which is taking forward the refurbishment of the kitchen area amongst other projects. RCPC is also working with Rowlands Castle Association to address crowd safety concerns in light of the increased attendance at the annual Fireworks Display over the last few years.

Please make time to read the minutes of the monthly Council meetings if you want to keep up to date with what's going on in the Parish – see the Council's website and/or local noticeboards.

Our website also contains lots of information on the work of the Council as well as local events and history. If there's a particular event you'd like promoted on the website and/or on the Parish Council's Facebook page, please let us know.

NOTES FROM EHDC

Cllr Malcolm Johnson

You will recall that in the spring edition I mentioned how work is now underway to develop the new Local Plan for the parts of East Hampshire that are not in the South Downs National Park. This work is now continuing at an increasing pace so that the approved plan can be in place by early 2020 so protecting the district and local communities from speculative development. At the end of May the planning team at EHDC closed their “call for sites” process and are now starting to evaluate the sites that have been put forward.

This is quite an involved process which requires the sites to be analysed against the existing Local Plan but also with an eye on the new emerging National Planning Policy Framework document as the various elements are published by the government. It should be remembered that just because a site has been put forward to the planning team, it does not mean that it will be automatically accepted and placed in the new Local Plan Strategic Housing Land Availability Assessment document that will accompany the plan when it’s approved by the planning inspector.

Currently the team is also waiting for the government to come forward with its housing assessment process. This is eagerly awaited as it will determine how the district has to go about setting housing numbers in the new plan. The provision of employment opportunities will also be a feature of the new local plan as well as housing policy for East Hampshire.

Another topic that has been exercising minds at Penns Place of late is the matter of our future waste collection and street cleaning contracts. You are probably aware that at present East Hampshire and Winchester City Council have joint contracts with Biffa Waste Management for our waste bin collections and I dverde who handle street cleaning and grass cutting. Well these contract expire next September so EHDC , who manages the contract on behalf of both authorities, is examining options for what happens at that time. This includes a variety of options as well as looking at what both authorities will require from a new agreement. Clearly the aim is to get the best possible service for our residents at the same time as achieving savings and efficiencies where possible.

On a totally different subject EHDC, like hundreds of other companies and organisations up and down the land has been introducing measures to comply with the new General Data Protection Regulations that came into force at the end of May. This is particularly important now as we are seeing increasing numbers of residents making use of both the EHDC web site along with the social media like Facebook and Twitter. Both these two have seen quite dramatic increases in their use by residents in recent months. To satisfy the ever increasing need for relevant information the Communications Team at Penns Place is increasing its inter-action on social media as this is seen as a most convenient way of

GDPR DATA PROTECTION



Designed by Freepik

disseminating regular up to date information to residents. And with the main web site being more interactive, altogether the three platforms are providing an increasing information flow to residents and others who seek news about both services and what is happening in and around East Hampshire. Data from recent analysis of who is accessing the main web site shows significant "hits" from people in London which suggests that folk are logging while either on the train or at work which demonstrates a healthy interest in East Hampshire.

My councillor grant fund is now open so I welcome applications from local organisations that are looking for financial support for small schemes, etc. I can allocate up to £1000 on an individual basis so if your organisation is

looking for help just visit the EHDC web site and download the relevant document and when complete forward it to me for signature, then I will submit your application to the Communities Team at Penns Place who will do the rest.

And finally please remember that on the first Thursday of each month along with our Hampshire County Councillor Marge Harvey and a representative from the Rowlands Castle Parish Council, I can be found in the village café between 1100 and 1200. So if you have something you wish to raise we will be there.

I can also be contacted at EHDC via email: malcolm.johnson@easthants.gov.uk or by phone 92412096.

PROGRESS REPORT

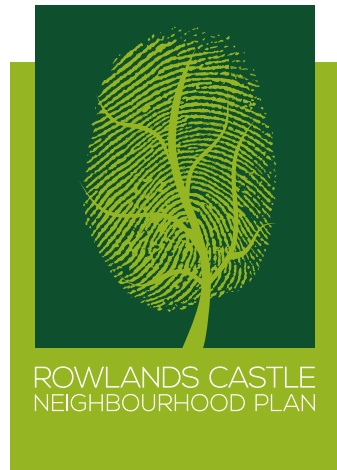
David Holt (Steering Group Chairman)

As reported in March, preparation of the Rowlands Castle Neighbourhood Plan was held up in early 2018 as a result of significant changes to government planning policy. These changes include new (yet unknown) housing targets for the District and the need for East Hampshire District Council (EHDC) to produce a new Local Plan in the next two years. However, as previously indicated, all the advice received urged us to continue and the decision to do so was taken by the Neighbourhood Plan Steering Group (SG) in April.

So, as summer approaches, the RCNP SG is working with renewed enthusiasm. Although we are working to a longer timescale, we are aiming to progress as quickly as possible to gather the evidence we need to work closely with EHDC as they too prepare their revised Plan. Draft policies are now appearing for deliberation as the Group sets out the details of how to achieve its vision:-

“To conserve and enhance the parish of Rowlands Castle as an attractive Community whilst maintaining its separate identity, character and distinctiveness.”

This is a crucial time in which the SG is keen to hear from residents on what they want from their neighbourhood plan, and with this in mind, we will have a stand at the Rowlands Castle Village Fair on Saturday 7th July. Although you will probably read this article after the Fair has



taken place, we hope that you came to share your views with us. If you didn't get a chance to see us, or if there are other things that you would like to contribute, we will be sending out a questionnaire to all households in the Parish, hopefully during August 2018. Your assistance in completing this will be hugely appreciated, and it will be your opportunity to help focus the Plan on issues that matter to you.

The SG continues to work with the South Downs National Park Authority (who are due to publish their own Local Plan later this year) and EHDC as they develop their new Local Plan (scheduled to be adopted in 2020). It will be our objective to ensure that the Neighbourhood Plan and both new Local Plans are fully "joined-up" and that they reflect the needs of the Parish and the aspirations of its residents.

If you are interested in playing a direct role in the development of the RCNP please contact Gill Whatley at the Parish Office (see above) for information.

WOMENS FELLOWSHIP IN ROWLANDS CASTLE

A group of very enthusiastic local ladies meets twice every month with the exception of August. We meet on the 1st and 3rd Tuesday afternoons between 2 and 4pm. at St John's Church Centre at the top of Redhill Road.

We always begin our meetings with a rousing hymn and continues with a programme of activities suggested by members - including games, quizzes, craft, debates, beetle-drives, What's My Line, also seasonal meals and some outings. We round off the afternoon with a cuppa and posh biscuits. We hold our AGM every November.

Members will make you most welcome if you would like to join us.

Please contact Gill at St John's Church Centre Parish Office on 92410111

ROWLANDS CASTLE RVS LUNCH CLUB Together for Older People

Rowlands Castle RVS Lunch Club continues to meet every Thursday in the Parish Hall.

It's a great way to Socialize and meet old and new friends, catching up on each other's news and discussing many events (Very often how the world is changing!) We really do have a sociable time, sharing a meal together and our wonderful volunteers try to make it a special time for everyone.

Currently we are at maximum with 32 service users however If anyone would like to join us on Thursdays from 12:00pm to approx. 1: 30pm (no rush to get away) we will try and find space for them as changes do occur regularly.

Wherever possible we offer to pick up and take home our service users who are no longer able to drive themselves. If you have some time to spare, maybe once a month or more, please contact us and we will guide you through joining the Royal Voluntary Service.

For more information please contact
Carol Milford 02392 412321 or Sue Leonard 02392 412108

*Carol Milford RVS Volunteer Coordinator and Treasurer
Sue Leonard Assistant RVS Volunteer Coordinator*

ROYAL
VOLUNTARY
SERVICE
Together for older people

MUSEUM? HERITAGE CENTRE? COMMUNITY HUB?

Alan Drinkwater



- **Have you heard about our Museum?**
- **Have you visited our Model Railway at Stansted House (free)?**
- **Did you know we have a Website?**
- **How about leasing the Railway Station for a community hub'?**
- **Would you like to volunteer & assist interpreting our rich history?**

Surprisingly, many residents seem unaware that Rowlands Castle Heritage Centre already exists and is making good progress. We are most proud of our principal artefact - our iconic model railway built by Peter Goss, showing the Village before D-Day.

The Heritage Centre idea developed from the model railway - to provide a home for it. We are proud that the model, now operated by our volunteer attendants, is displayed in a main room at Stansted House.

Have you looked at <rowlandscastleheritagecentre.org.uk> ? Our Website was created not only for the model railway, but also for archives already accumulated; calendars courtesy of the Photography Group; Parish Plan and Local Landscape Character Assessment drafted by residents. Find out more about village history; the village name; the brickworks; former Finchdean foundry; old Stansted College. Read about Roman villas; or Idsworth House and the Clarke Jervoise family, or experiences of villagers during World War II, the Falklands. The Website will become much more comprehensive - a 'one-stop shop' for exploring our area, of value particularly to young people.

Our current challenge is to decide whether to lease the accommodation over the railway station to house our archive and provide opportunities for meetings, displays and presentations. Possibly a 'Community Hub'?

Our main focus is to attract and stimulate volunteers with a range of skills to bring the Heritage Centre alive; to protect, record and interpret our history. Are you interested?

Please contact our Secretary or Chairman!

Prue Amner: secretary@rowlandscastleheritagecentre.org.uk

Alan Drinkwater chair@rowlandscastleheritagecentre.org.uk

Registered Charity: 1174495

Below: Stanstead College



VISIT OUR ACCLAIMED WORKING MODEL RAILWAY

Set in the centre of Rowlands castle, this scale model shows the troops, vehicles and trains as they were during the approach to D-Day in 1944.

On display at Stansted House
Sun, Mon, Tues and Wed

1 - 4pm from Easter until the end of September

Admission is free, admission to Stansted House is extra

www.rowlandscastleheritagecentre.org.uk
www.facebook.com/rowlandscastleheritagecentre



/ COMMUNITY EVENTS - ROWLANDS CASTLE & SURROUNDINGS

RCWI

7:30 pm

Second Monday of each month

No meeting in August

Parish Hall, Links Lane

ST HUBERT'S

Friday 10th August 9.30 am - 12.30 pm

'Walking the Past'

A 5-mile Walk from St Hubert's Church to
Butser Ancient Farm

Friday 14th, Sat 15th, Sun 16th Sept

Open daily: 10.00 am - 4.30 pm

Art Exhibition at St Hubert's

with work by Local Professional Artists

Admission Free***Refreshments available

Saturday 27th October 6.00 pm

Autumn Concert at St Hubert's

'An Evening with Mary Ann Kennedy,
Highland harpist and singer'

WOMANS FELLOWSHIP

2:00 - 4:00 pm

First and third Tues afternoon of the

month. No meeting in August

St John's Church centre. See page 49

RVS LUNCH CLUB

12:00 pm - 1:30 pm

Every Thursday

Parish Hall

Contact: Carol Milford 02392 412321

ALTON ABBEY

**Desert Island Discs featuring Dom Timothy
Bavin OSB FRSCM**

At The Monastery of Our Lady and St John
In the Abbey Church

Saturday July 28th at 7.30pm

**Retired Bishop of Johannesburg and of
Portsmouth, Monk of Alton Abbey,
in conversation with Oblate Christopher
Pluck**

7.30pm followed by wine and light
refreshments

This will be a fascinating evening, enriched
by beautiful music - do join us.

Tickets £15 from:

**"Tickets", Friends of Alton Abbey,
Alton Abbey, Abbey Road, Alton, GU34 4AP**

Cheques should be made payable to
"Friends of Alton Abbey".

Please include a SAE for your tickets, and a
telephone number, or an email address.



/ SAVE THE DATE - RCA EVENTS FOR YOUR DIARY

MAYDAY PICNIC & BBQ ON THE GREEN

See pages 16 - 19



ANNUAL QUIZ

SATURDAY 20TH OCTOBER 2018

7:00 pm

Always popular, come for the fun, food and prizes

Contact: secretary@rowlandscastle.com

FIREWORKS DISPLAY

SATURDAY 3rd NOVEMBER 2018

GATES OPEN 5:30 PM, FIREWORKS AT 7:00 PM.

The RCA Guy Fawkes fireworks display takes place in the Recreation Ground in Links Lane.

Adults £5; children under 16 free. There is no bonfire this year.

Contact: secretary@rowlandscastle.com

CHILDREN'S CHRISTMAS PARTY

SUNDAY 16TH DECEMBER 2018

11:00-1:00 pm

The annual RCA Children's Christmas Party in the Rowlands Castle Parish Hall. For children 0-6 yrs (with an adult). Magic Mikey entertainment, lots to eat and Father Christmas. £1 per child and a wrapped and labelled present for Father Christmas to give.

Contact: Anita King 07952 882201 or anita.king43@googlemail.com for more information and tickets.

Mayday picnic on the green

7 MAY 2018



*A PICNIC
IN PICTURES*





A PICNIC IN PICTURES





ART EXHIBITION

Over 30 professional artists, photographers and craftspeople will be represented at the upcoming exhibition at St Hubert's.

Plans and preparations are once again well in hand for the second art exhibition to be held at St Hubert's. Due to the fantastic response from over 800 visitors last year ("stunning & beautiful, the church and the artists compliment one another. Please do another exhibition next year") it has been extended to three days including Friday 14th, 15th and 16th September. Open daily 10am – 4.30pm, free admission. Many of last year's artists are returning but some new artists will be joining them. The works include an exciting mix of oils, watercolours, printmaking, illustration, textiles, ceramics, sculpture, glass, sculpture and wildlife photography. The artists will respond to the theme of St Hubert's Idsworth: Inspired by the heritage and the South Downs landscape.

All these high quality works are for sale with a wide range of prices. Many of the artists will be on hand to meet visitors and explain their working methods. Part of the proceeds from the exhibition will go towards supporting the work of The Idsworth Church Friends Trust who are raising funds for a major programme of repair and refurbishment. St Hubert's is recognised by many experts as an important landmark in the South Downs National Park. In addition, it possesses some significant wall paintings dating back to 1330.

The Art Exhibition will be open as follows:

Friday 14th, Saturday 15th, Sunday 16th

September 2018

Open daily 10.00am – 4.30pm

Admission is Free – All Welcome!

Refreshments available, easy parking

St Hubert's Church,

Nr Finchdean

PO8 0BA

Stop Press!

There will also be a celebrity visit by actor, Charles Collingwood, 'Brian Aldridge in BBC's The Archers' at 2.30pm on Saturday afternoon.



St Hubert's Idsworth:

A fundraising Art Exhibition inspired by its Heritage and the South Downs landscape

Fri 14, Sat 15 and Sun 16 September 2018



Open daily 10am - 4.30pm
FREE ENTRY

Featuring a wide range of themed work for sale
by invited local and professional artists,
photographers and craftspeople

To be held at St Hubert's, Nr Finchdean, Idsworth,
Hampshire, PO8 0BA

Refreshments available and easy parking

Proceeds will support the preservation of St Hubert's and
the Friends of of St Hubert, Idsworth Trust

www.idsworthchurchfriends.org



WOMEN'S INSTITUTE

Contact

Jill Hewitt, President

T 02392 412941

E jillhewitt2@icloud.com

Sandra White, Secretary

T 02392 413100

E rowlandscastlesec@hampshirewi.org

This spring and early summer has been as busy as ever. We have enjoyed a variety of talks including a modern take on flower arranging from Liz Pelley and learning all about chocolate when Dawn Shrivs took us on a journey, 'From Cocoa Bean to Chocolate Bar' - with plenty of tasting!

We have relished our usual mix of activities - there really is something for everyone. Our fabulous quiz team came second in the Staunton Group Quiz and we have kept active with table tennis and walks to Stansted for coffee and cake. This year we held a very successful Spring Fair. This allowed some of our talented members to showcase their wares and provided local crafters and businesses with an opportunity to reach the RC market. As usual many members have attended our regular Craft Club and Book Club and played fun scrabble. At our AGM in May we welcomed our new President, Sarah Lee who is looking forward to a vibrant and forward-looking term of office.

The WI has its own college, Denman College in Oxfordshire (<https://www.denman.org.uk/>)

1918 - 2018

theWI

INSPIRING WOMEN

HAMPSHIRE

where members can visit to learn a huge variety of skills and gain knowledge on many subjects. RCWI members recently won bursaries to learn about quilting and preserves and to discover more about Oxford itself.

The 2018/2019 RCWI Programme will be on our noticeboard (outside the estate agents) shortly - do have a look and if you would like to know more, come along to a meeting and enjoy a cup of tea/coffee or a glass of wine with us. We meet on the second Monday of each month (except August) at 7.30pm in the Parish Hall, Links Lane. For more information, contact Sarah Lee, President 07989 936663 e: rowlandscastlepres@hampshirewi.org.uk or Sandra White, Secretary 023 9241 3100 e: rowlandscastlesec@hampshirewi.org.uk



LEARNING FROM EACH OTHER

June Halford, U3A committee
junehalford@gmail.com
02392 412674

The U3A, University of the Third Age, brings together people in their 'third age' of life, to develop their interests and continue their learning in a friendly, informal environment. We are not a university in the usual sense so don't be scared off.

By 'third age' we mean no particular number - it's after you have finished working full time or raising a family and have time to pursue your interests or just try something new.

U3A has a club of members who draw upon their knowledge and experience to teach and learn from each other, but no qualifications are required, it is just for pleasure. Learning is its own reward!

Rowlands Castle U3A is relatively young, started only 4 years ago and flourishing. It has met the needs of many, with 150 members and 25 Groups ranging from Art Appreciation to Short Tennis. There is something for everyone and if you are looking for something we don't do, we can help you to start that new group. See the list of groups on our notice board in the bus stop, in the Surgery or on our website.
Website : U3Asites.org.uk/Rowlands-castle

We have a monthly meeting with speakers and on an eclectic mix of subjects and there is time afterwards to meet each other and chat over tea and biscuits.

Do visit our website to see groups, to download a membership form, to check out meetings and see details of the U3A Summer School, which this year is in Chichester.
u3Asites.org.uk/Rowlands-castle

If you are interested in joining or would like more information don't hesitate to contact me.



LOTS TO LOOK FORWARD TO

Jace Clark Student Pastor CotG

It is so amazing that God has blessed us with so many times and seasons. Just a few weeks ago, when writing the last magazine article, there was snow on the ground and now we are topping up our tans with so much beautiful sunshine.....and more to come!

Easter now seems a long time ago but our joint Easter services we held with St Johns were something very special, we all felt a real sense of Gods presence and it was lovely that Rev Trevor from St Johns could retire on a high point, we do wish him all the very best for the future.

Our Musical Evening we held in March was a complete success with fantastic performances from all the singers, musicians and poems that there were on offer this year coupled with a great audience and generous giving by all to the charity, which year went to Naomi House – Children and young adults hospice.

After many months of Prayer, meetings and hard work by key individuals within our Church and support from the local community we have now secured a date for our Chapel renovations which will commence at the end of August. God, yet again has been faithful to us with financial generosity from organizations and individuals, so much so that without these acts of kindness



the building work would most definitely not be able to move forward. Thank you all so very much!

Please do keep a watch on the Grapevine for some special events we have planned such as a BBQ Family Service and a possible Children's Fun Day in the Summer holidays.

May we take this opportunity from us at Church on the Green to wish you all a wonderful Summer.
Take care and God bless.

/ THE VILLAGE AND SURROUNDINGS IN PICTURES

Midsummer evening looking towards Portsmouth



LOOKING BACK AND LOOKING FORWARD

Pam Ewing - Churchwarden

It is still early in our interregnum – the time between one vicar leaving and the next arriving – and we're still learning how much Trevor did to keep the church going.

As I reflect on Rev Trevor's time in Rowlands Castle, I am grateful for the changes that have taken place in St John's relationship with the village, particularly with the school. I don't suppose we are aware of all that Trevor did in a pastoral way, visiting or just chatting as he passed through the village, or enjoyed a meal or a drink, but if you met him formally or informally, I'm sure he left a good impression. It's a hard act to follow.

We don't know how long we'll have to wait for a new Vicar – probably a year or so. We have to arrange for a visiting minister to take Communion Services, Weddings and Baptisms – and we have all services covered up to the end of September. The pattern of our Sunday services is much the same before :

- 8 am Holy Communion using the Book of Common Prayer
 - 10 am informal worship (all the words projected)
 - 1st All-age Family Worship
 - 2nd, 4th and 5th Morning Worship, with separate Young Church activities
 - 3rd Family Communion
- Midweek communions will not take place.

We are blessed to have a team of really capable licenced Lay Readers in the congregation, ready and willing to lead and preach.

Our links with the School will continue, and we hope to see the School Choir at some of our services (Mothering Sunday and Harvest Festival).

Looking forward to the Autumn, we are planning a Floral display to mark the Centenary of the end of the First World War. This will take place between October 21st and November 11th.

You may have noticed that we now have plaques on the Churchyard entrances placed by the Commonwealth War Graves Commission, indicating the presence of War Graves in the churchyard.

Pam Ewing and Terry Monahan (Churchwardens)
023 9241 0111 (Office, manned 9am -12noon
weekdays except Tuesday)



MARTIN ROEBUCK

Ian Hewitt, Chairman

In the last magazine I mentioned Gwenda Brewer and her pivotal role for the last 4 years and her death only 11 days after giving up as Chief Co-ordinator. Hardly had we recovered from that when we had the equally distressing news that Martin Roebuck had also died. Martin was a volunteer for 22 years and, in recent years, had been, with Gwenda, one of our most active volunteers. A double whammy?

On several occasions clients said to me that the last Good Neighbours volunteer was such a nice man but they couldn't remember his name. (Was that a hint that I'm not so nice ... ???) After describing him, I would say, "Sounds like Martin." "That's him," they would reply. "Could not have been more helpful."

We are grateful to Sandra White who gave a most interesting AGM talk about the Silver Line, the charity, founded by Esther Rantzen, providing free, confidential advice for older people. We also welcome Ann Denney to our committee and Siobhan C as a prospective volunteer driver.

Donations from drivers slightly exceed volunteer reimbursements so we have a slight surplus to spend to the benefit of the community e.g. refurbishment of benches round the Green. If you have any ideas for something costing a modest few hundred pounds please contact me or the GN helpline number below.



The committee will consider all reasonable suggestions. .

If you need any help – or know of anyone who may do e.g. with:

- Transport to hospital, library, shopping or a social event
- Collecting a prescription
- Any other neighbourly activity?

then please remind them of our help line - 0845 519 6641

Please give at least 48 hours notice but don't phone more than 2 weeks ahead.

CHAPEL OF FLOWERS AT STANSTEAD GARDEN SHOW

Pat Shergold

Three Rowlands Castle residents, members of The Emsworth Flower Club contributed to the flower festival in the Chapel at Stansted Garden Show in June. This year's theme was 'My Hobby'. The club have chosen 'Canine Partners' as their charity for all their fund raising events in 2018.

The ladies are also members of Rowlands Castle Golf Club, with 2 displays being golf orientated. Liz Johnson's was 'Holiday Golf in the Sun', Ann Summers created 'The 19th Hole' and Sheila Russell designed 'My Garden'. Emsworth Flower Club members spent 2 days decorating the Chapel with other themes including Bridge, Knitting, Quilting and Deep Sea Diving.

The festival was well received by visitors to the chapel, many giving favourable comments with comparisons to Chelsea and the recent flower festival in Chichester Cathedral. Visitors

also enjoyed meeting and shaking paws with 3 'Canine Partners' who also visited the Chapel on the Saturday. The total sum raised over the weekend for this worthy cause was £1922. Further funds will be raised at the Stansted Christmas Fayre to be held 22th - 25th November, when the club will decorate the Chapel with a Christmas theme.

Emsworth Flower Club meets in St James Church Hall, Emsworth at 2pm on the 4th Friday of the month, Jan - June and Sept - November. New members and guests are very welcome. If you love flowers, come to one of our meetings and watch a demonstration. For more information telephone Vanessa 02392 789282 or Email eg.floradora@googlemail.com

Emsworthafternoonflowerclub.wordpress.com





Petersfield Framing Studios

Picture Framing by Andy Parks, MA, G.C.F.

- ◆ Collection and Delivery Service in the Rowlands Castle area.
- ◆ Guild Commended Framer (G.C.F.) with 23 years experience.
- ◆ Over 400 different mouldings and 200 mount boards to choose from.
- ◆ Very competitive prices.
- ◆ Picture framing tuition also available.
- ◆ Tel: 01730 269926.
- ◆ Visit: www.petersfieldframing.co.uk

***"We Collect and Deliver Your
Picture Framing"***

THE DOG RUNNER SOUTH DOWNS



3, 5 and 7 mile runs for high energy dogs in Rowlands Castle, Emsworth and surrounding villages.

Call Helen Ison on 07791 125408

[www.facebook.com/
thedogrunnersouthdowns](http://www.facebook.com/thedogrunnersouthdowns)

Email helen.dargan@btinternet.com



OUR VILLAGE FLAG

Barbara Openshaw

This is your flag—our flag—the flag of Britain. During 2018 it will fly on The Green at least 34 times.

I have had the honour and privilege of being the Village Flag Master since 1995, when Ernest Barter retired. Although I accepted with initial reluctance, it is a role from which I get great pleasure and is appreciated by villagers and visitors alike.

We have 2 flags:

- The Union Flag, which can only officially be called the Union Jack when flown from the jack staff on the bow of a ship, and
- The Flag of St. George, flown for occasions such as the May Day Picnic, 6th May 2019 and the Village Fair, 7th July 2018. On these village events, the bunting also decorates The Green.

How is it decided when to raise our flag?

Ernest gave me his list of dates and, over the years, I have added to them:

4 Patron Saints' Days (Sts. David, Patrick, George and Andrew),

Special Royal occasions: the Queen's Accession and Coronation, her birthday and her official birthday, which is the 2nd Saturday in June and coincides with Trooping the Colour, the birthdays of the Queen's immediate family and the anniversary of the her marriage with Prince Philip on 20th November.

The Services are also remembered: the Navy's Trafalgar Day is on 21st October, the Army has the Battle of Waterloo Day on 18th June and for the RAF The Battle of Britain is commemorated on 15th September. There is Armed Forces Day on the last Saturday of June and Commonwealth Day on the 2nd Monday in March.

Additional days the flag has been raised this year include: 6th February, when we celebrated 100 years since women over 30 had the vote; 1st April marked the centenary of the creation of the RAF; we couldn't ignore the wedding of Prince Harry and Megan Markle and on 15th July we will recognise 70 years of the NHS.

Not all dates are the same each year, with Easter Day and Remembrance Day varying each year: Remembrance Sunday is the Sunday nearest to 11th November. If this is any other day there is always a short ceremony on The Green at 11a.m., when the Flag is lowered for the 2 minute silence commemorating the Armistice 1918.

Occasionally a village wedding has been acknowledged.

In 2017 the flag was flown at half-mast on 3 occasions: in sympathy with the Manchester and London disasters and the Grenfell Tower victims.



Our flag looks impressive fluttering from the flagpole. However, its enormous size is fully realised only when it is lowered and stretched out. Children on school visits and local junior groups have handled and learned about the design and other village youngsters passing by have helped with the lowering and folding. If I am not available the flag is in safe keeping, ready to be flown on a designated day or in the event of an unfortunate occurrence, when it would be at half mast. There is always a citation on the flag pole to explain the reason for the flag's flying. Next time you are passing, please read it and take a moment to ponder on the flag and all that it signifies.

Protect your family's health

Our friendly and approachable GPs offer:

- ✓ Chicken Pox vaccination
- ✓ Comprehensive health checks
- ✓ Flu vaccination ✓ Corporate services



Call **01243 766 447** to arrange your appointment in Emsworth and Chichester.

www.southdownsprivatehealthcare.co.uk



SOUTHDOWNS
PRIVATE HEALTH CARE

Making time for your health

Independent private GP service



Southdowns Healthplan

Offering you outstanding healthcare exactly when you need it.

18-40 years Plan	40-60 years Plan	60+ years Plan	Couples Plan	Family Plan
£35 _{pcm}	£45 _{pcm}	£57 _{pcm}	£75 _{pcm}	£99 _{pcm}
<ul style="list-style-type: none">• Free annual healthcheck• Free Flu Jab• Up to 10 GP appointments• Free administration of prescriptions• Free administration of referrals• Discounted prices on advanced health checks• Priority appointment booking• Online access to your letters and results				

Visit southdownsprivatehealthcare.co.uk
for more details and to join Healthplan today

97 Havant Road, Emsworth,
Hampshire, PO10 7LF

The Boxgrove Clinic, The Street,
Boxgrove, Chichester, PO18 0ES

Tel: 033 022 02000 | 01243 766447



SOUTHDOWNS
PRIVATE HEALTH CARE

SOME PROGRESS TOWARDS A 'GREENER' WORLD

Nic Radcliffe

In this article, I have some good news towards progress to a 'greener' world and one way we can join in.

We are constantly reminded these days that we need to reduce our energy consumption, and quite right too. I'm sure we all have our own ways of doing this, such as switching off lights when leaving a room or turning the heating down a degree. But individually we are just small fish in a very big pond. The bigger picture is that as part of the Climate Change Act 2008 the UK government is legally bound to reduce emissions by 80 per cent by 2050 compared to the levels in 1990. That's a huge reduction and seems almost impossible. However, there's hope on the way from Portugal.

The football World Cup is just kicking off as I write this. And though Portugal may not have won it by now I would certainly give them the Energy World Cup - if there were such a thing! I'd give it to them because in March this year the renewable energy they created from wind and hydroelectric power was 104% of the energy needed by the country. They say that they are on track for the production of renewable electricity to be able to guarantee, in a cost-effective way, the total annual electricity consumption of mainland Portugal. A great example to us all.

One way some of us can make a 'green' contribution is by installing solar panels. If this is something you're thinking about, you might want to learn more about a new service offered jointly by Google and Eon. It's called Eonsolar and is easy to find via Google. It's an online calculator that tells you how much you could save on your energy bills with solar panels installed. It first cleverly uses Google Maps to workout your usable roof area for maximum gains. Then it converts this into a installation price, kilowatts of production and so savings per year off your bills. Just as an example it calculated that someone in a terraced house in Royal Gardens could save £488 per year. It might be worth a look.

In 2013 a government paper was released calling for a widespread shift away from natural gas to electric for our heating. However research quickly found that the national grid would need to produce more than double the amount of electricity it currently does. Although electric is easier to produce from renewable sources it is much more difficult, and far more expensive, to store. Which of course is crucial in our cold winters that cause large surges in demand. Something that our gas infrastructure is already set up for. So this



coupled with the fact that almost 80 percent of UK homes are connected to mains gas. There has been a lot of research into reducing gases carbon output. Our mains gas (natural gas) is currently predominantly methane, which produces carbon when burned. There are a few options but Biomethane is looking favorable. This is because it is so similar to natural gas. So won't cause issues with our current appliances or infrastructure. Some may remember the big change over from town gas to natural gas between 1967 and 1977. That was a huge undertaking costing British Gas £563 million with the alteration of some 40million appliances. Obviously something no one wants to repeat.

YOU TOO CAN HAVE A SAY

All content for this magazine is provided by readers like you and new contributions are most welcome.

CONTRIBUTION GUIDELINES

The Village magazine is published three times a year by the RCA. The aims of the RCA are to act as a channel of communication for the village, to conserve its character and to enhance the life of its residents.

Contributions for publishing are welcomed however, please note that all materials should be submitted by the following dates:

SPRING issue: 18th March

SUMMER issue: 18th June

AUTUMN issue: 18th October

PLEASE NOTE:

Due to printing deadlines, late submissions cannot be considered for publication.

Contributions should be between 200-300 words. and you should provide at least one image to accompany your article (max 10MB file size). Please include images as a separate file(s), not as part of a Word doc.

Send your contribution to:
editor@rowlandscastle.com



/ THE CENTRE SPREAD

Water lilies in Staunton Country Park





ROLLING THROUGH ROWLANDS

Arguably amongst the most charming country railway stations on the network, Rowlands Castle station is perfectly positioned to become a vital gateway to the South Downs National Park for ramblers, cyclists and dog walkers.

Interesting Facts:

- An estimated 130,000 passenger journeys to or from Rowlands Castle are anticipated this year, if train travel trends continue as they have in the last five years.
- Approximately 46% of journeys are made by season ticket holders and 27% of journeys are made using a reduced price ticket.

- South Western Rail parent company is 30% owned by Hong Kong based MTR Corporation and 70% owned by Scottish based First Group.

Opened on January 1st 1859, the station was once one of three between Petersfield and Havant, but is the only one to have enjoyed a regular service. Havant New, to the south, was a temporary station built during an inter-company dispute - the Battle of Havant; Woodcroft Halt, to the north, was open for a few years round World War 2, mainly for service personnel.

Formerly there were goods and coal sidings



trailing off the up line at the Petersfield end of the station. There was only one crossover between the two running lines, which meant that goods trains that arrived from the Petersfield direction (usually on the 0450 Goods Woking to Rowland's Castle) had to "set-back" into the headshunt and "fly shunt" (i.e. run off)

wagons into the sidings rather than propelling them. This was a skilled movement and not normally permitted by the Rule Book. There was also a siding trailing off the up line, Havant side of the station, serving a brickworks adjacent to the remains of the Castle.

Source: Wikipedia / Office of Rail and Road [1 Dec 2017]



A vintage steam train passes through the village and the Idsworth area earlier in June 2018.

ksphoto.co.uk

WHERE IS THE CASTLE?

Mary-Jane Lomer

Further to my picture story in the RCA magazine Spring 2018 I decided to continue the reasons why I got interested in village history. Moving in in 1964 I wanted to find out more of the history of the waste ground between Beechwood and the railway line (now a car park).

Visitors to the village today ask where is the castle? Records tell us that the area has been inhabited as far back as 10,000 BC. The Windmill Hill Culture left polished axes around 2,000 BC and later one character named Roland is mentioned. The ancient castle is supposed to have been built on the site of a Roman or Saxon Entrenchment.

Down through the years stories tell us of forest free booters, knights and paladins having a hunting lodge in the area. Stephen and Matilda contesting heirs of Henry I could have fortified the castle. Henry II who loved hunting stayed there and would not have wanted to see the castles demise. It could have fallen into disrepair, or destroyed during an earthquake.

So there really is a castle site and we do know exactly where it was built. The existing mounds are in the private gardens of Deerleap and are not accessible to the public.

The previous owner in 2017 invited two groups of villagers to view the site. Beechwood Retirement Home is adjacent to the ruins on the far side of the railway track , and Home Hardware on the near side behind Deerleap.

The site contains very impressive tree covered mounds and stretches along the railway line and you can see Beechwood through the trees. There is a flagpole on a mound marking the spot as an ancient monument, a Motte and Bailey castle.

Leaflets tell of groups of tourists coming in vans from Portsmouth in the 1850s, visiting the Dell close to the castle ruins but this delightful tree lined picnic area was cut in two making way for the railway line which commenced in January 1859.



SOUTHERN MOWER SERVICES

New and used lawn mowers, strimmers, hedge trimmers, chain saws, ride on mowers, leaf blowers and more



Our highest priority is service to our customers

Sales | Repairs | Service | Parts

Unit 4 Hillside Industrial Estate, London Road, Horndean, Hampshire PO8 0BL

Tel: 02392 592954

Email: info@southernmowerservices.co.uk

www.southernmowerservices.co.uk

1ST ROWLANDS CASTLE RAINBOWS

Lorna Hancock

We've had a brilliant summer term at 1st Rowlands Castle Rainbows. The girls have all been having lots of fun partaking in our regional Booms-a-Daisy challenge, with lots of crafts and games as well as learning the challenges namesake dancehall classic.

We very successfully held our second annual sleepover, with some girls staying away from home for the first time! The girls all took to the parish hall with their sleeping bags, roll mats, pyjamas and teddy bears, for a fun evening of making cuddly toys, designing t-shirts for them, hot chocolate, and many other things before settling down to a film before bed.

Then we have just got back from a large scale girlguiding event in The New Forest called 'Magic and Mayhem'. It is a festival style event just for rainbows and Brownies. The girls got to take part in many different activities including science, magic, circus skills, assault courses, rock climbing, Zorbing, dance and many other things, followed by a disco and campfire before bedding down with hundreds of other rainbows and Brownies in a big top tent, it was certainly an experience! But all the girls had an absolutely amazing time, it was such a brilliant opportunity for girls of that age to be able to go away and do!

We are looking forward to ending the term with a big summer party before the summer break.

If you have a daughter that you think would like to become a Rainbow, please register her through 'Join us' at www.girlguiding.org.uk and we will be in contact. (If you want to make sure she joins when she is 5, make sure you put her name down early, as our unit has a waiting list).





JOANNA THURGUR

— CHIMNEY SWEEP SERVICES —



Tidy, thorough and professional chimney and flue cleaning service

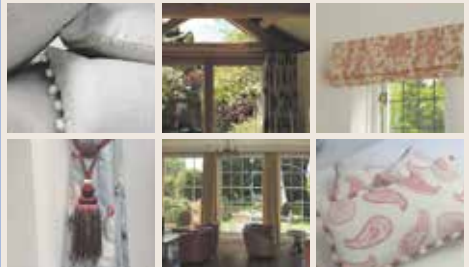
Telephone: 07731 525673

Email: info@joannathesweep.co.uk

Website: joannathesweep.co.uk



Elizabeth Turner Soft Furnishings



A small, professional soft furnishings business, providing a bespoke service to meet our customers' exact requirements.

All of our products are hand-made to a very high standard. We also supply fabric, a range of curtain poles, tracks and other accessories.

Courtyard 4, Sindles Farm, Aldsworth, Emsworth PO10 8QS

01243 389939

info@elizabethturner.co.uk

www.elizabethturner.co.uk

PTA SUMMER FAIR

Matt Hancock

After months of planning, led by Chair, Ed Till, the PTA committee with a band of merry volunteers set out on Saturday 16th June to provide a summer fair to remember.

Headteacher, Mrs Pavitt, experiencing the extravaganza for the first time, opened the fair in front of an expecting crowd. The man on the mic, Jim Cochrane, kept us entertained throughout the afternoon, especially with the spontaneous dance competitions! The dad on the decks, Lawrence, supported by upcoming DJ Zara, supplied the tracks to create a fun atmosphere.

The bottle hoopla enticed many fair goers to try their luck, some were very persistent! Another big hit with the children was the free open top vintage bus rides especially driving past low hanging branches!

Some dads got together a few weeks ago to give the skateboard ride some TLC with a bit mending and the hard work paid off with the little ones loving the exhilaration of zooming down. Lewis Stickland (Yr 4) said, "It was the best school fair I've ever been to because there were so many stalls and things to do."

Our mega raffle was a big draw with cash prizes kindly donated by HPD Estate Agents & John Wiley Publishers along with an array of family activities.



Although the final amount is to be confirmed, we're looking at a profit in excess of £4,000. A magnificent total for a village school!

A HUGE thank you must go to all the parents, pupils, teachers, staff, businesses and willing volunteers, some with no connection to the school, who gave up their time to support us. A real community event with the community spirit we all love in this special village of ours.

Wish to help at any future events? We'd love to hear from you! Email chair@stjohnspta.com



S.Roberts Upholsterers

Professional upholstery.

Contract and domestic - any size work undertaken

We provide a free measuring and quotation service and you can find us on Checkatrade.com

Checkatrade.com

Call on **01243 377200**
for all your upholstery requirements

www.re-upholster.co.uk



Unit 10. Palmers Road Industrial Estate. Emsworth. Hants PO10 7DH

THE FORTH DIMENSION OF SPACE

Frank Philpot

The fourth dimension of space, is the speed of light in metres per second, multiplied by the time interval between two events in seconds.

What does this mean to us?

- 1 We are all moving at the speed of light in the fourth dimension of space.
- 2 All objects are made of photons of high X-ray light.
- 3 We, ie the energy that makes up our being has been moving at the speed of light since the beginning of time. i.e the big bang.
- 4 The Universe is an four dimensional sphere that is expanding at the speed of light.
- 5 We exist on the outer surface of this sphere.
- 6 Time, is the expansion of the Universe.
- 7 The age of the Universe in seconds is the reciprocal of Hubble's constant which gives the observed rate of expansion.
- 8 Relative velocity between two objects means they are moving in different directions in four dimensional space.
- 9 There is only one speed in four-dimensional space.
- 10 So the effects of 'relativity', shortening of time and space in the direction of movement as observed by by a stationary observer, are simply due to Perspective change associated with the object moving in a different direction to the observer, in four dimensional space.
- 11 Mass changing from moving through time at the speed of light to moving slower through space is where the Sun gets it energy.





Holistic healing

**Helping you to
help yourself**

**Stress, anxiety, trauma
Recurring seasonal illness
Chronic health conditions
All inter-related affecting
many aspects of your life.
Can be fixable!**

**Susan Cowe Miller 07917 680967
Rowlands Castle 02392 410090**

**EFT, Matrix Reimprinting, Meta Health,
Counselling Skills, Reiki**

**www.hampshire-eft.co.uk
susan@hampshire-eft.co.uk**

THOUGHTS FROM A SMALL GARDEN

Chris White

I moved to Rowlands Castle nearly a year ago now and I love the friendly feel to the village and, very important to me, the flora and fauna to be seen round and about.

As I am sitting looking out of the conservatory window with my early morning cuppa, I think how lucky I am that our little garden is alive with all kinds of birds.

I am a keen bird watcher (not quite a twitcher) so when we moved in, one of the first things to be put up in the garden were a couple of bird feeders. Very quickly we were having regular visits from Blue Tits, Great Tits, Coal Tits, with the occasional visit from the Long tailed tit. I've been watching 3 juvenile Siskins, who are very tame and would let me approach to within a meter of them feeding. A pair of Bullfinches, such gorgeous birds, the beautiful reddy orange breast of the male and the slightly duller female, have been regular if not daily visitors. The pretty colourful Goldfinches, one of the smallest finches and the most quarrelsome birds to visit the garden, Greenfinches, Dunnocks, the Great Spotted Woodpecker and Nuthatch, are seen almost daily. Below is a picture of our Robin, we call him Scruffy another regular.

This is a great time of the year, the chicks are fledging, the Siskin chicks were first, then the Blackbirds, very amusing to see them being fed



by the adults who were smaller than the chicks. They now have a second brood nesting in our neighbour shrubbery. The mother is so busy back and forward with beak full of juicy worms. It is such a pleasure to watch.

I soon found Havant Thicket, a great place to stroll around with a pair of binoculars, among the wildlife to see are, deer, Buzzards, Red Kite. Lot's of dog walkers and joggers to say a jolly good morning to.

It is lucky that I am retired as I don't feel quite as guilty about the happy hours that I spend watching our garden friends. I now keep a daily diary of the birds who visit and the pages are always full. Sometimes a surprise visitor, like the one from a house sparrow was only the second one to be spotted in the garden (be it that I'm not actually watching all day long!!)

It's been a busy time with alterations to the house and lots of work in the garden, but we have managed to get to a few events, the village fair last July, the carol service on the green and a quiz in aid of Rowans hospice. There is so much on offer which we will take up when we have a little more time and obviously more bird watching.

/ LOCAL BIRDLIFE

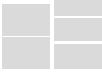
SIGHTINGS FROM A GARDEN

Richard Arnold

Photographs on this page:

Below:

Chris White



Right:

Richard Arnold



Herewith some pictures of what is a Starling and its fledgling. I managed to photograph this on 7th June 2018 on my bird feeder - rear garden .

Our feeders are giving us great fun at the moment, we have had a great variety of bird life.



COUNTRYSIDE JEWELS

Tony Wright

There are few things in life which inspire the creative muse better than a glorious Spring and it was with this in mind I took to my walk up to the Avenue at Stanstead.

Climbing the path from Finchdean Road by massive trunks already smelling rich and humid after winter's Spartan undress, moss-covered rocks and logs splashing lime in shafts of sunshine, I could not help but smile upon emerging to the corridor framing the House.

The very iridescence of fresh leaves glowing in clear bright light; emerging orchids' spotty

leaves pushing forth, fresh mole mountains, and turning the corner, finding intoxicating golden fields swaying under sparkling skies adjacent to a counterpoint carpet of indigo-blues dappled and nodding in patches along the journey. I must also include the wild diversity of miniature treasures popping bright hues along the path but their very number defies description.

Photos never do such memories justice. This is truly a special time and place – long may we treasure these jewels of our countryside.



We believe that every day should be lived to the full...

We have two beautiful family run care homes that offer person centred Residential and Nursing care. Our compassionate, dedicated team are on hand 24 hours a day to support with all aspects of daily living. We support individuals seeking respite, convalescence and long term care.

A warm welcome awaits you

- Long term, convalescence and respite stays
- Dining areas looking onto beautiful gardens
- Landscaped patio and relaxation areas
- Ensuite single bedrooms
- Nutritious home cooked meals
- Large homely lounge areas
- Wi-fi available

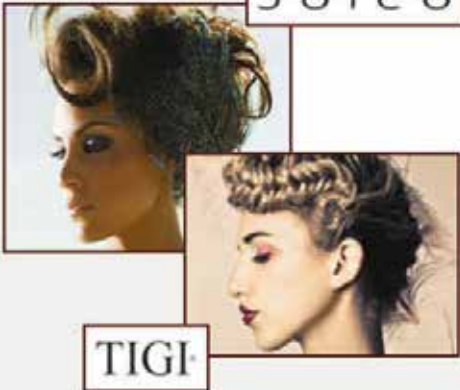


72 – 74 Havant Road
Emsworth
Hampshire
PO10 7LH
Tel: 01243 372445



Printsted Lane
Printsted
West Sussex
PO10 8HR
Tel: 01243 372024

www.springfieldnursing.co.uk



02392 412 606



info@stylestudio-rowlands castle.co.uk

Your local Hair and Beauty Salon

Recommended by The Good Salon Guide, we're situated in the heart of Rowlands Castle.

Offering a professional portfolio of hair and beauty treatments by a team of experienced hairdressers and beauticians.

- Hair for ladies and gents
- Beauty
- Special packages
- Late appointments available by request

Contact us: 3 Links Lane, Rowlands Castle, Hampshire, PO9 6AD

Find us online: stylestudio-rowlands castle.co.uk

PEDAL 2 PEDAL MOUNTAIN BIKE COACHING FOR KIDS AND ADULTS

Hannah Attenburrow
07984367888
www.pedal2pedal.co.uk
www.beyondthemud.co.uk

Our beautiful part of the UK has become the home of a cycling club with a difference! Based from Rowlands Castle covering Hampshire, Surrey and West Sussex Pedal 2 Pedal caters for cyclists of all ages and abilities, the main difference being that all these cyclists share a passion for exploring trails and getting muddy!

Pedal 2 Pedal was established by cross country mountain bike racer and British Cycling coach Hannah Attenburrow. Pedal 2 Pedal offers a mixture of junior cycling courses aimed to get kids riding safely and confidently, Junior Mountain Bike Academy which is the only one of its kind in the South East of England with 24 riders taking part each week from Queen Elizabeth Country Park and women's coaching weekends.

Dirt is good for you come off-road riding with us!

For children who are interested in riding off-road Pedal 2 Pedal offers mountain bike camps for riders aged 5 to 12 these aim to develop mountain bike techniques like riding on uneven surfaces, cornering, braking effectively and

dealing with obstacles. This course is suitable for young riders who have already got a little experience riding off-road on tracks, forest paths and fields. Courses are running in July and August.

Pete whose son attended a camp in Easter said; My 8 year old son loved his 2 camps, he had so much fun and learnt a lot new things. Now even more confident on the trails. Thank you Hannah.

Contact Hannah at hannah@pedal2pedal.co.uk or visit www.pedal2pedal.co.uk







NURSERY

Where play and learning fit together

Reg Charity No:

1088132

St Johns CEC School Rowlands Castle

For children aged 2 to 5 years

Contact Manager Lorraine Bryant

jigsawplayschool@hotmail.co.uk

www.jigsawplayschool.co.uk

02392412164



Burchett Decorators

- Domestic, Commercial & Insurance Work
- 22 Years Experience
- All Types of Decorating including Wallpapering, Coving & Carpentry
- Fully Insured
- Clean, Tidy & Friendly Service

Ring for FREE Estimate
or Just Helpful Advice

07866 691 984

023 9241 3548

Email: Burchett.davis@btinternet.com

Keith was friendly,
reliable and worked
exactly as he promised
to, neat, tidy and very
personable

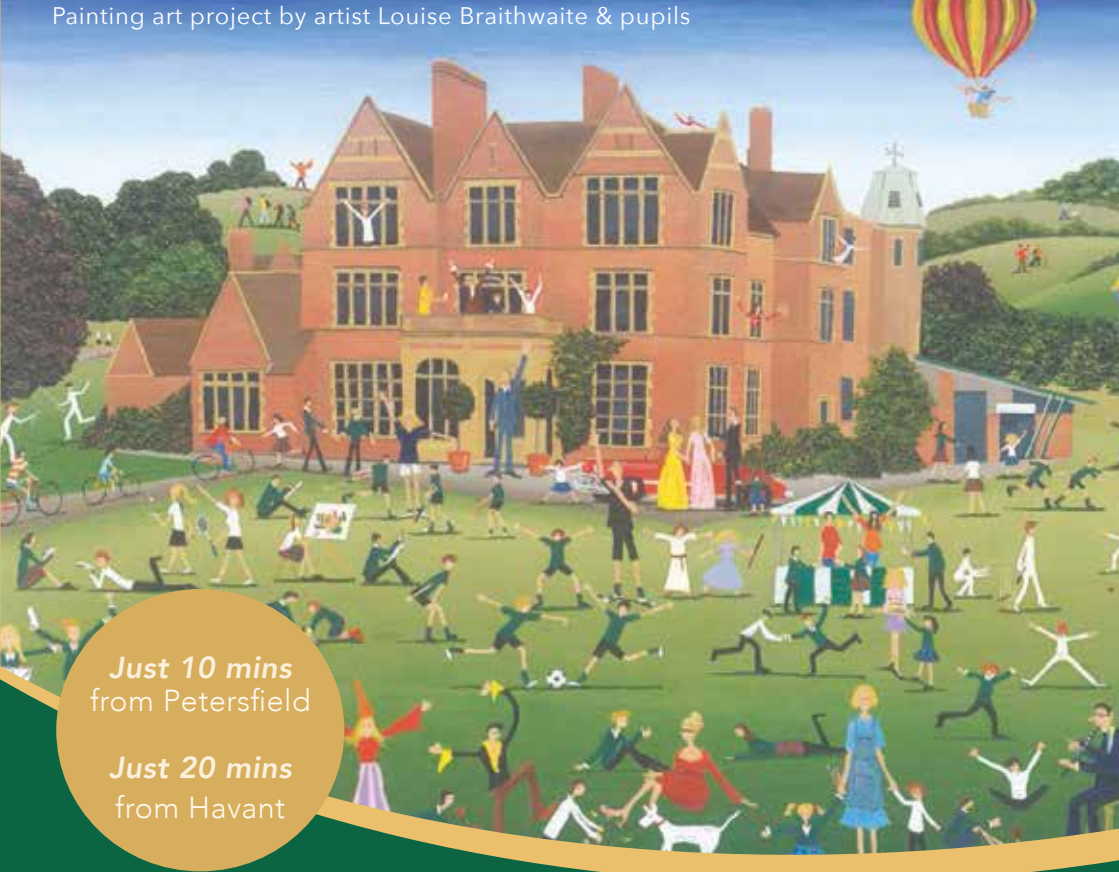
Customer, Stedham, 2012

Checkatrade.com
Where reputation matters

10/10

Member for 8 years

Burchett Decorators, Finchdean, Nr. Rowlands Castle, Hampshire



*Just 10 mins
from Petersfield*

*Just 20 mins
from Havant*



DITCHAM PARK SCHOOL

Excellence in education from 4 to 16 years
in a stunning location on the South Downs.

Scholarships and Bursaries available.

Petersfield Hants GU31 5RN

Call us on: 01730 825 659 www.ditchampark.com

DACD (RC) CRICKET CLUB

Jonathan Law

Early Season Report.

Early season cancellations due to wet weather. Check.

DACD under performing on Sundays. Check

The start of the 2018 season had a familiar feel about it.

We finally took to the field on 9th May against MCC at Hollybank where Ian Woodard with 31no anchored a score of 92-2 off 20 overs. A good all round bowling and fielding performance restricted MCC to 80-5 to record a good win in our first game.

Unfortunately this was the start of 5 defeats on the trot. Our first home game saw a very strong Swanmore XI rack up 271-6 off 40 overs before dismissing us for 85. The following games didn't see DACD really competing as loss followed loss.

We finally returned to winning ways in the Bill Young Memorial game against The Tax Office. A close and hard fought game saw DACD defending 111 off 20 overs. Ian Woodard again making a key contribution with 27no followed by all 6 bowlers taking wickets to bowl out Tax Office for 105.

The next home game against St James Casuals saw the first 50s of the season with Tim Barton (51) and Will Andrews (59) helping us to a half decent 173-7 off 40 overs but another strong young batting line up cruised to 174-4 with 2 overs to spare.



The final fixture for this report was a return midweek game against Swanmore. Batting first DACD posted 145 with Alex Andrews 32no, Tim Barton 25no, Guy Andrews 21 and Meredydd Hughes 43 the main contributors. On a picturesque but small ground it nearly wasn't enough. The Swanmore reply ebbed and flowed and dropped catches didn't help. However wickets fell regularly with Meredydd and Mike Whyatt picking up 3 apiece as a win by 9 runs was eventually secured.

One highlight of the early season has been the (rare) appearance of veteran leg spinner Ray Smith heading the leading wicket taker award with 12. His guile and ability to bamboozle batsmen with flight and spin has been one of the plus points of an indifferent start to the season.

As this article is being submitted we are about to head off to Belgium to play Royal Brussels CC who have told us that the British Ambassador to Belgium will be in attendance. Ferrero Rocher's all round.

I would like to again thank Paul and his team at The George, Finchdean for looking after us and our opposition with their post-match hospitality.

Playing Record P 9 W 3 L 6 Cancelled 5



Portsmouth High School

GDST
GIRLS' DAY SCHOOL TRUST

Open Morning

Saturday 6 October
9.00 to 12.30

An independent
school for girls
from Pre-School to
Sixth Form achieving
outstanding results

*School minibus routes
run to Rowlands Castle daily
in term time*

Where girls do better



www.portsmouthhigh.co.uk

023 9282 6714 • admissions@por.gdst.net

FURTHER AFIELD

Hollycombe fairground weekend & mechanical organ gathering

14th-15th July

Hollycombe Steam In The Country, Iron Hill, Liphook, Hampshire, GU30 7LP, UK.

Enjoy Hollycombe's traditional steam fairground and visiting attractions including fairground models, transport, living vans and historic photographs. The Mechanical Organ Gathering complements the event with a range of visiting organs which will be playing throughout the weekend. These will date from late-1800s organettes, to hand-turned street organs, and various sizes of fairground, street and dance organs. Tickets online in advance and at the gate.

Beside the Seaside

Hayling Island seafront to the right of Beachlands PO11 0AJ

11am - 3pm

15 July / Free

Nothing beats a day by the seaside, so The Spring Arts & Heritage Centre is heading to Hayling Island's beautiful beach this summer for a free day of fun for the whole family!

As well as performances, games and stalls, we'll also be joined by a couple of cheeky seagulls, a few fishy characters, a gentle giant from the deep blue sea and the world's smallest solar powered cinema. Our pop-up promenade will be there in sunshine or rain, so bring a beach towel or a raincoat and we'll see you there!

Hampshire Food Festival

1st - 30th July 2018, across Hampshire

Originally established as a weekend event, this Festival has grown into a month-long, countywide programme of events celebrating the best of local food and farming. The Festival showcases the abundance of Hampshire's food and drink through farm visits, vineyard and brewery tours, tastings, pop-ups, special menus, chef demonstrations, workshops, fairs and shows. It is believed that no other county does a Food Festival on such an ambitious scale as Hampshire! For more information visit: www.visit-hampshire.co.uk

Tom Jones in concert Stanstead House

Wednesday 18th July

Stansted Park Foundation

Rowlands Castle, Hampshire, PO9 6DX

Gates open at 5pm, show starts at 7pm

Music legend Tom Jones is taking his sensational live show to magnificent stately homes and historic UK locations this summer.

The concerts will be a celebration of a music career that spans six decades and will see Sir Tom perform headline shows at some of the nation's most beautiful venues. To book tickets please visit: www.cuffeandtaylor.com/events/tomjones



Wickham Festival

2nd - 5th August 2018

Wickham

This 4 day family friendly music and arts festival is held in the rural but beautiful location of the village of Wickham. In the past the festival has won prestigious awards for the best festival (capacity under 15,000). Stay the whole weekend and camp out or if camping isn't you're scene full day and evening tickets are also available.

Portsmouth International Kite Festival

11th & 12th August 2018

Southsea Common

Once again the skies above Southsea Common, Portsmouth will be filled with a myriad of kites of all shapes and sizes on August 11th and 12th 2018, 10am until 5pm both days. This free event is jointly organised by Portsmouth City Council and The Kite Society of Great Britain.

It will be truly spectacular with hundreds of kite fliers from around the world travelling to the event because the Portsmouth International Kite Festival is recognised as one of the best Kite Festivals in the world.



/ GREAT DAYS OUT

continued

Hambledon Wine Festival

Saturday 11th August 2018

11am- 4pm

Entry: £20.00

Our very own wine festival here at Hambledon, enjoy live music throughout the day and of course browse through food stands and wines from us and a few of our fellow wine friends. With demonstrations running about different aspects of the vineyard and special offers on tours and masterclasses throughout the day this is a perfect opportunity to see behind the scenes of England's oldest Commercial vineyard. If you have visited the vineyard before you will know that the vineyard is always growing and this festival provides a great way to see what has happened over the course of the last year. Also, the Hambledon Bus will be making its first appearance at the vineyard, take a look round or why not even purchase a tasting ticket which will give you access to try all three Cuvees. TICKET price includes festival entry and a branded Hambledon Wine Glass.

Beer, Bread & Bees Festival

Butser Ancient Farm

Bank Holiday Monday 27 August

10am-5pm

Join us for the finale of our Summer of Science & Sorcery as we celebrate all things beer, bread and bees! Try homebrewed nettle beer, grinding wheat for flour, learn about early wheats, taste local honey mead, bake bread in our oven and over the fire, watch a beekeeping demonstration and try local beers.

Standard ticket prices apply, at the gate.

Ceramics Summer Exhibition

28 July - 12 August

Bishops Kitchen in the grounds of Chichester Cathedral, PO19 1PX

An inspiring exhibition of beautifully hand crafted ceramic homeware from celebrated local ceramic artists, with products for sale, by the Southern Ceramics Group.

Meet the artists, learn about the many styles of this ancient yet very modern craft, commission a bespoke piece for your home or for a special anniversary or celebration, or simply pop in for a few minutes of artistic inspiration.



Victorious Festival

Southsea Seafront Portsmouth
24th - 26th August 2018

This three day festival is set to be bigger and better. Now in its seventh year, the 2018 line up includes world famous artists such as Paul Weller, Paloma Faith, Kaider Chiefs and The Libertines and promotes dozens of up and coming artists. As well as a great line-up your tickets will give you free entry into some of Portsmouth top attractions such as Blue Reef Aquarium and D-day Museum.

For more information visit:
<https://www.victoriousfestival.co.uk>

Hampshire Open Studios

18-27 August

Hampshire Open Studios is an annual art trail where the visiting public can meet artists in their studios and galleries.

In the week leading up to bank holiday Monday August, 250 studios, galleries, artists and art groups (in excess of 500 artists) open their doors to exhibit original artwork, give talks and demos to the visiting public. Entry is free and to find your nearest venue check the website or look out for the pink direction arrows that will guide you to the artists' doors.
www.hampshireopenstudios.org.uk

Victorious Festival Southsea



DO YOU HAVE A STORY TO TELL?

Book design

Brochure design

Graphic design

Website design

Ad design

Campaign design

Professional design for
your memoirs, your
corporate image or your
brand story telling.



Contact your local design partner

kelvin@t-eight.co.uk

www.t-eight.co.uk

/ GREAT DAYS OUT *continued*

Hot Rod & Custom Car Show

Stanstead House

31st Aug & 1st & 2nd Sept

Back to the style of weekenders that were so much fun! Marquee entertainment for both nights with great bands and DJs. Saturday cruise into deepest Hampshire. Sunday show and shine with prizes for top cars. Premium catering throughout the entire weekend. Luxury showers and toilets for those choosing stay the weekend at the on-site camping facilities. Lots of additional activities to keep both adults and children occupied from steam train rides, adventure playground to tours of the Wonderful Stanstead House.

Illumination: A Festival Of Flowers

Winchester Cathedral

5 - 9 September 2018

Flower Festival returns with a stunning array of flower arrangements inspired by the magnificent Winchester Bible, the largest and finest surviving 12th-century English bible. Immerse yourself in a riot of colour as the Cathedral is transformed by striking and fragrant floral displays evoking the Bible's exquisite illuminated initials and elaborate decorative schemes.

This listing is provided as a community service. The editor, RCA committee and associates accept no responsibility for any changes, cancellations or inaccurate information. You are advised to always check an events status before attending.

MacDonald Oates LLP SOLICITORS



Leading Client Service

Residential Property
Family Law
Mediation Services
Wills, Probate & Trusts
Litigation & Dispute Resolution
Employment Law
Company & Commercial
Commercial Property

Petersfield Office

Tel: 01730 268211 | Fax: 01730 261232

Midhurst Office

Tel: 01730 816711 | Fax: 01730 816016

www.macdonaldoates.co.uk

PILATES, FITNESS YOGA AND BARRECONCEPT

POSTURE PILATES - to re-balance the body by improving posture, muscle tone, flexibility and core stability.

FITNESS YOGA - stretch, strength with Yoga postures.

BARRECONCEPT - all body workout, stretches and tones muscle whilst burns fat.



Day/Evening Classes available small friendly classes held in a private local studio.

*Please Contact: Stacey Merritt BSc
merrittstacey@hotmail.com / 07957 215459*

Register
of
Exercise
Professionals



HEATING • PLUMBING • BATHROOMS

I can help with all your boiler, heating, plumbing and bathroom needs. And I'm right here in the village, so can call round at short notice.

**Here's my number.
Please keep it in a
safe place.**

07905 908143

www.nicradcliffe.com

nic@nicradcliffe.com



**City
Guilds**
Qualified



HELEN'S AIRPORT CARS

"With US it can often cost less than rail or airport parking"

Saloons
MPVs
Estates
4 - 8 seaters



Helen's Cars

Reliable
Affordable &
Comfortable
Pre-booked
24hr.

01243 820820

Book Online Now www.airporttaxis.co.uk

We have a driver near you! 01243 780999



fabulous flooring with a perfect fit!



visit our website
to find out more
waterloovillecarpets.co.uk

Service is the secret of satisfied customers and satisfied customers are the secret of our 50 year success.

- Fabulous Carpets from Greendale, Brintons and Ulster
- Crucial Trading/Alternative Flooring Specialist
- Fabulous Vinyl Tiles from Amtico, Karndean and Vusta
- New Click only Vinyl Planks and Tiles from Karndean
- Fabulous Quickstep Laminate Flooring
- Oak Floors – Engineered Planks and Solid Click
- Fabulous Bamboo, Cork and Sustainable Flooring
- 12 MONTHS INTEREST FREE CREDIT on all products



We promise you a flooring that fits your requirements, fits your budget and fits beautifully into your home. Please call in, anytime.

A pleasure to come home to.....

31 The Square, Petersfield, Hampshire Telephone: 01730 262223/267381 Fax: 01730 267394
email: sales@waterloovillecarpets.co.uk waterloovillecarpets.co.uk

MORRIS BUILDING SERVICES

Shaun Morris

113 Finchdean Road, Rowlands Castle, Hants, PO9 6EN

RENOVATIONS
ALTERATIONS
SMALL WORKS

ALL ASPECTS OF PROPERTY MAINTENANCE AND
REPAIRS, INTERNAL AND EXTERNAL

ROWLANDS CASTLE FREE ESTIMATES
(023) 9241 3130 07941 742598

N • K • S Building & Landscapes

Drives • Patios

Stonework • Drainage

Garden Walls • Building Maintenance

Alterations and Renovations

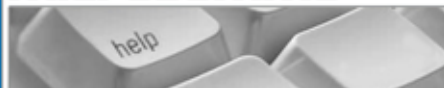
Free Estimates

Nigel Sykes

023 9241 0118
07788 126 547

Please keep this leaflet in a safe place
for when you need my services.

microsomma



**IT Support for Home
& Small Business**
www.microsomma.com

David A. J. Somma BSc
Computer Systems Engineer

Reliable & Local

Available 7 Days

Qualified & Experienced

0845 0170772

07796 346526



david@microsomma.com

PROFESSIONAL PLUMBING
& HEATING SPECIALISTS

A. A. BARRETT

51 Hatchmore Road
Denmead
Waterlooville
PO7 6TE

Tel: 023 92258057
Mobile: 07802321269

Tel: 023 92258057
Mobile: 07802321269



BUILDING CONTRACTORS

COMMERCIAL, INDUSTRIAL and
MAJOR DOMESTIC WORKS

Joinery Mill, The Green, Rowlands Castle,
Hampshire. PO9 6BW

Tel 023 9241 2741
www.winnicott.co.uk

Established
1904

Fax 023 9241 2212
mail@winnicott.co.uk



Austens

Petworth
Tel: 01798 342104
Billingshurst
Tel: 01403 782963
Midhurst
Tel: 01730 815979

Alton
Tel: 01420 85115
Emsworth
Tel: 01243 376852
Romsey
Tel: 01794 512141
Rowlands Castle
Tel: 02392 412332

homehardware

Not just paint!
WE COVER EVERYTHING!

- ✓ GREAT SAVINGS ON MANY RANGES
- ✓ FRIENDLY EXPERIENCED STAFF
- ✓ **OPEN SUNDAYS**

Dulux
PAINT MIXING CENTRES



www.rowlandshomehardware.co.uk

POST OFFICE

OPEN 7 DAYS A WEEK

THE LAST LAUGH

/ NUMBERS TO KNOW



Early Facebook

WHAT WHERE HOW WHEN

EMERGENCY	999
NON EMERGENCY POLICE	101
NON EMERGENCY MEDICAL	111
ELECTRIC POWER CUT	105
GAS EMERGENCY	0800 111 999

Rowlands Castle Pharmacy

12 The Green
Rowlands Castle
PO9 6BN
T 02392 413952

Rowlands Castle Surgery

12 The Green
Rowlands Castle
Hampshire
PO9 6BN
T 02392412846

Practice in the Park (Dentist)

4 Basing Road
Leigh Park
Havant
Hants
PO9 5AG
T 02392 486660

Recycling Centres

Location: **Behind Castle Inn, Rowlands Castle**
Waste Accepted: Glass, Textiles
Location: **Household Waste Recycling Centre, Harts Farm Way, Havant, PO9 1HS**
Waste Accepted: Go to www.hants.gov.uk for full details or call 0300 555 1389

GEORGE IDE LLP

solicitors

Offices in Chichester, Guildford and London



Your leading law firm for:

- Wills & Probate
- Commercial Property & Business Services
- Family & Divorce
- Personal Injury & Clinical Negligence
- Residential Property
- Wealth Management

Serving the community for over 50 years

T: 01243 786 668 • E: info@georgeide.co.uk
www.georgeide.co.uk

ENVIRONMENTAL HEALTH IN
AND AROUND THE VILLAGE

DOG FOULING SCOOP IT, BAG IT, BIN IT

THE LAW

A dog owner or walker must remove their dog's mess from land used by the public. If you don't do this, you may be given a fixed penalty fine of £50 by a dog warden or other council officer. You may also be prosecuted and fined up to £1,000. Responsible dog ownership means always taking a scoop or bags with you, and disposing of any mess in bins provided.

REPORTING

**Report dog fouling online or call Animal Welfare on 01730 234319.
www.easthants.gov.uk**

This notice is provided as a public service announcement.

Content sourced from East Hampshire District Council



/ NUMBERS TO KNOW

continued

Havant Library

T 0300 555 1387 9.30 - 5pm, Monday to Saturday

East Hants District Council

T 01730 266551, 9am to 5pm, Monday to Friday.

Hampshire County Council,

Use www.hants.gov.uk/aboutthecouncil/contact for a list of relevant numbers.
Open 8:30am to 5pm

Rowlands Castle Parish Council

The Parish Office is open to the public between 10am and on 12 Noon on Tuesdays and Thursdays, and at other times by appointment.

Rowlands Castle Parish Council,
11 The Green, Rowlands Castle, Hampshire
PO9 6BW.

T 02392 413044

E clerk@rowlandscastlepc.org.uk

W www.rowlandscastlepc.org.uk



MARTIN STEELS LTD

INDEPENDENT OPTOMETRISTS & CONTACT LENS PRACTITIONERS

ENHANCED EYE EXAMINATION & PROFESSIONAL OPTOMETRIC CARE

Including

- Ultra-widefield Optomap and 3D-OCT scan.
- Specialist retinal and glaucoma tests.
- Advanced dry eye treatments.
- Contact lens fitting and aftercare (inc. medical contact lens).
- Designer eyewear.
- Designer sunglasses, available in prescription.

LINDBERG ∞

optos



FACE A FACE
PARIS

PORSCHE DESIGN
EYEWEAR

Silhouette[®]
AUTHENTIC EYEWEAR. SINCE 1964.

4 Old Flour Mill, Emsworth

01243 375 141

www.martinsteels.com

Monday – Friday: 9.00am to 5.30pm

Saturday: 9.00am to 1.00pm



“Aqua were brilliant from start to finish.
Friendly, professional and tidy!
We would happily recommend them.”

- Mr & Mrs H (Waterlooville)

AQUA
KITCHENS & BATHROOMS

“We wanted a wow factor whilst keeping the practicality of a busy kitchen - Aqua exceeded our expectations”

- Mrs R (Hayling Island)



RENEW, RELAX, ENTERTAIN

Here at Aqua we deliver a great customer experience, bespoke design, attention to detail and installations that look fabulous. After more than 1,200 projects and over 400 great customer reviews we aren't the only ones to think this. We take enormous pride in the quality of our installations so you have complete satisfaction.

If you're looking to renew your kitchen or bathroom and need a trusted professional supplier, then talk to Aqua today.

Call us on 023 9246 6007 to arrange your free survey.

See our beautiful showroom at 18 Elm Grove Hayling Island.