

Rowlands Castle Association



Summer 2015

Village Magazine

www.rowlandscastle.com



Bathrooms designed especially for you...

At Aqua Bathrooms, we offer a tailored design service, helping you create the perfect bathing space in your home.

From concept through to completion, our experienced and talented designers will work with you to ensure every aspect of your new bathroom meets your requirements. Our experienced installation team will ensure your bathroom is installed correctly with minimum fuss and disruption to your home.

Our friendly and knowledgeable team are highly skilled and experienced and have built up a strong reputation for quality and reliability. All our work is fully guaranteed so rest assured that entrusting your bathroom design and installation to Aqua, you will be in good hands.






We look forward to welcoming you from
Simon, Dave and the Aqua Team

Visit our Showroom
18 Elm Grove,
Hayling Island,
Hampshire
PO11 9EF

T: 02392 466007

E: enquiries@aqua-ltd.co.uk

W: www.aqua-ltd.co.uk

-  Fully fitted showroom
-  Free design service
-  Detailed quotation
-  In house fitters
-  Fully guaranteed
-  Peace of mind





ROWLANDS CASTLE ASSOCIATION

Village Magazine Summer 2015

Message from Chair.....	4
RCA Committee.....	5
Village Fair.....	6-7
Local News.....	8
U3A.....	9
Village News.....	10-11
Women's Institute.....	12-13
Local Council News.....	14-16
District Council News.....	17-18
County News.....	19
1st Rowlands Castle Scouts.....	20-21
Letters to the Editor.....	21
Girlguiding.....	22
Gardening club.....	23
Neighbourhood Watch.....	24-25
Womens Fellowship.....	25
Craft Fair.....	26
Human Interest.....	27
St John's School.....	28-31
Domestic heating advice.....	32
Science.....	34
Village Museum.....	36-37
Painting.....	40
Environment.....	41
Cricket.....	42-43
St John's Church.....	44
St Hubert's Church.....	46
Church on the Green.....	47
History.....	48-53
Interior Design.....	54

The Village Magazine is published three times a year by the RCA. The aims of the RCA are to act as a channel of communication for the Village, to conserve the character and to enhance the life of the Village. **If you would like to make a donation to magazine printing costs there is a collection tin in the hardware store or you can pop an envelope through Martha Dombey's door 26 Drift Road.**

**Editor: Kevin Connell, 19 Mallard Road, Rowlands Castle, PO9 6HN
Tel: 02392 413857 email: editor@rowlandscastle.com**

***Cover picture: Blendworth Brass Band at May Day Picnic
Sue Connell***

Rowlands Castle Association

Message from the chairman of the RCA by Kevin Connell Chair, RCA

First I welcome onto the RCA committee Jeff Jacobs and Joyce Jacobs. With the increasing level of activity in the RCA they are a welcome addition to the team.

The RCA has launched two recent initiatives. The first is the project to convert the accommodation area of the Rowlands Castle station into a museum and visitor centre for the South Downs National Park. There is a questionnaire in the centre pages of this magazine seeking your opinions and offers of help.

The second initiative is Greening. This was launched at the Village Fair with a public meeting planned for 19.00 October 13th 2015 in the small Parish Hall. At this meeting the objectives of the Greening initiative will be defined with material being distributed around the village with the Autumn edition of the RCA magazine.

I receive letters from time to time complaining about issues such as parking in the village, particularly around the Village Green. The RCA is only able to represent villagers' views to elected representatives. We are not in a position to make any decisions on such matters and certainly parking policy around the green is not in the remit of the RCA.

Speeding continues to be a problem in and around the village particularly it seems in the Durrant's Road area. Motorists travelling at between 50 and 60 mph on this road are not uncommon and some irresponsible motor cyclists attain even greater speeds. I have had a speeding car overtake me when I have been trying to turn right into Durrant's allotments. The car mounted the pavement out of control but fortunately nobody was walking on the pavement at the time.

The speed checkers are frequently monitoring this road but it seems to make little difference. With the road being identified as a hot spot by EHDC hopefully some calming measures will be introduced. However, similar issues have been raised by resident about speeding on Manor Lodge Road and the roads around Finchdean. It is an enduring problem.



Kevin Connell (Chairman)
9241 3857
chair@rowlandscastle.com

Rowlands Castle Association

Your RCA Committee



Sue Leonard (Secretary)
9241 2108
secretary@rowlandscastle.com



Martha Dombey (Treasurer)
9241 0030



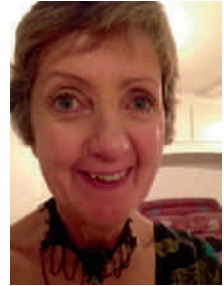
Gordon Charlesworth
9241 3865



Sue Morrison



David Hooper



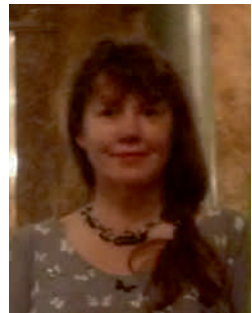
Helen Penfold



Gillian Lovegrove (Webmaster)
9241 2426
webmaster@rowlandscastle.com



Paul Griffiths



Deborah Richards

Village News

Rowlands Castle Village Fair by Grahame Morrison

Although it is only a very short time since last Saturday, judging by the comments and emails we have received it would seem that the RCVF team have delivered another successful event.

We had many more stalls than last year and this was greatly aided by the new RCVF website and online booking forms, general information, and a great new map of the Green created by Steve Pierson. The set up the Green started about 7AM under the commanding eye of young Sam Tucker and was completed in plenty of time for the start with the assistance of the booking coordinator, Caroline Hill.

We had a larger arena than usual and provided straw bales this year for people to sit on as they enjoyed the show, a great improvement, and the idea of Tony Bathmaker. The first on were the Horndean Steel Pan Band who kicked things off in grand style and then Neil Watson, Chairman of Castle United Football Club, officially opened the Fair. It was a pleasure for me to be able to present him with £250 cheques from RCVF funds for both adult and junior sides. £250 was also donated to 1st Rowlands Castle Scouts.



Andy Tucker, who did a sterling job on the PA throughout the day, then announced the winners of the Horticultural Show, excellently organised, as ever, by Brian Aherne.

Following that an exciting new addition to the arena was Terena Plowright and her sheep dog, Sweep, who gave the first of two demonstrations of his skills in rounding up some remarkably insouciant geese!

Other new additions to the event were a Punch and Judy show that had young and old shrieking for all they were worth and gentle musical entertainment in the marquee provided by Arabesque Noir. Last year's big hit, Professor Crump, returned again to entertain one and all through the day with his antics on bike and scooter.



The day's events were rounded off with traditional children's races and Tug O War in the arena

The day was not without its crises – the most noticeable of these being the extremely late arrival of the tables and chairs from the marquee provider. As the morning

wore on and the temperature climbed the lack of seating became increasingly taxing for many on the Green. However the Parish Hall come to our rescue with the temporary use of their chairs until the ones we'd paid for eventually arrived. In gratitude, we will be making a contribution to their funds.

We are only a small committee this year but we were able to run our own bar this weekend. Adrian Wilcox project managed and, not having enough RCVF members to staff it ourselves, Susan Morrison arranged a crowd of willing volunteers – to whom many heartfelt thanks. With free bar staff we are looking at healthy profits to new village causes whilst still offering prices that significantly reduced the amount of BYO that has undercut fundraising efforts in past years. Together with the advertising revenue from the RCVF magazine driven by Jon Higham our Treasurer, Gill Bell, should be banking a healthy profit from the day.



The evening's live entertainment in the marquee by Rachael Hawnt and the band Great Scott went down a storm (and we've already received multiple requests to have them back next year) complemented by great tracks from DJ Bob McCartney before and after the live sets. To ensure the safety of the 500 people in the audience Ian Oliver arranged for professional security this year. Their only comment after the event was how friendly and cooperative the crowd was!

Despite all efforts with bins and skips provided on site, the thousands of people we get at this event usually means mess and, unsurprisingly, we had plenty this year. But thanks to the efforts of the Castle United Youth Football Team and the 1st Rowlands Castle Scouts (assisted by the jaded members of the RCVF who had little more than 10 hours sleep in past three days) the Green was immaculate again by 10AM on Sunday!

Finally, I am hoping that we will have two young new members of the committee by the time you read this. Charlie Oliver and Sophie Bell's help in this year's event was magnificent and richly deserves an invitation to help plan next year's, even better, event.



Local News

Summer in the Village

by Alan Eyers

By the time you read this it will be summer. Hopefully a Bar-B-Q one, but let's not get our hopes too high. I hope that for those of you who walk in Stansted, particularly during May and June, noticed firstly the blue bells and after the wild foxgloves, which seem to be particularly prolific this spring, particularly in the areas where the Estate has been coppicing or clearing and replacing. The odd wild orchid also raised it's head in some places. There are so many paths in the 'Forest', crisscrossing each other, it is easy to miss something, so I hope if you can find the time, to spend some of it exploring.

Which brings me to another point; the Estate from time to time 'blocks' off some of the small paths. This is to protect breeding areas, particularly during spring time. They are trying to encourage and maintain a wider range of ground nesting birds and mammals, so we should respect these sometimes short lived 'blocks' because there are miles of other paths to explore.

Being dog walkers, we are up in the park most days. There have been a few 'meetings' with some of the wardens who have some concerns with certain dogs off the lead, who have been chasing deer. Several deer have had to be put down because they have suffered injuries. Not all of course have fallen foul of dogs but it is a potential problem, owners are asked to maintain as much control over their dogs as possible and if they have any concerns to keep their dogs on their leads. They tell me there are no plans to 'ban dogs' walking or running off the lead. But!!! The use of the park/forest is a fantastic facility. It's something to be treasured.

Also, the other treasure of village life, the Village Fair, would have taken place regardless of the weather. I was involved with 11 fairs. My first, it managed to rain all day and I mean rain, bucket loads, but people still turned up, macs, umbrellas and wellie boots in a verity colours to the fore. I know how much hard work goes into the organising of this special day but we did manage to hold most of the meetings in one of the village pubs, so there were some benefits !!!! The committee are always looking for new recruits so put yourself forward if you want to make a contribution. Hard work, but lots of fun too.

Further reference to Dog Walking, the large sign on one of the recreation fences requesting to PICK UP seems to be working, well, but there is still the odd person who chooses to be oblivious of the unpleasantness of leaving a mess. It is so easy if we all clear up after our own dogs. Enjoy the rest of the summer in our village.

U3A activities

by Kevin Connell

The Rowlands Castle U3A have had a busy year with a wide range of activities. A full list of Groups and a description can be found on the Rowlands Castle website. There have been various outings to Blenheim, Wisley and Parham. There have been trips to the theatre to shows such as Oklahoma and Jeeves and Wooster. More trips are planned such as trips to Sandhurst (tba) and Windsor and a hosted visit to the Otter Gallery. There have been some wonderful talks on subjects as diverse as debunking moon landing conspiracy theories, alpacas, what goes on in No 10 and the life of a prison governor.

Talks and visits scheduled for the rest of the year are below. Other activities will be added through the year. Talks are held in the Parish Hall, on 3rd Monday of the month at 14.00. Non members are welcome, entry fee £2.00, Rowlands Castle U3A members free. Annual membership of the U3A is £20. The U3A is aimed at people who are no longer in full time work (meetings apart from wine tasting occur morning or afternoon.)

July 20th – Annual outing to Windsor Castle

September 21st Bob Palmer

How the course of history has been critically affected by illness in World leaders

October 19th Dave Richardson

World War Two, the turning point.

November 16th Dr Bob France

Turner at the House of Art, Petworth

December 21st 2nd Anniversary and Christmas Party

Jan 18th Andrew Negus

Portsmouth Harlots, Dung and Glory

Feb 8th Visit to Otter Gallery

Feb 15th Bernard Allan

Manet and Modern Paris

Mar 21st Dr Tim Woodfine

African Wildlife & Endangered Species



Village News

Parish Hall Report

by Jonathan Law

The Parish Hall AGM was held on the 19th May reaching the milestone of the 30th year since the formation of the Rowlands Castle Parish Hall Management Committee (RCPHMC). Chairperson Kath Molloy presented her report for 2014 which is summarised as follows:

2014 saw the Hall reach its Centenary which was marked on 31st May 2014 with an afternoon tea and concert.

The Rowlands Castle community turned out in force to celebrate with entertainment provided by Reflections and the FB Pocket Orchestra. A wonderful tea was provided by the Women's Institute and other volunteer cake bakers. The Committee were extremely appreciative of the help and support from everyone on the day and the Hall's Centenary was commemorated in some style.

Work on the Hall in 2014 was much reduced compared to the previous year and mainly consisted of a major overhaul of the electrical system and installation of more energy efficient lights.

We would like to take this opportunity to thank all the Village and Local Community groups that continue to support the Parish Hall. The regular bookings are the lifeblood of the Halls income stream but we are still very reliant on grants and donations to fund some of the essential maintenance and necessary improvements to the building. In 2014 we received a grant from Hampshire County Council for the decoration of the front of the Hall in time for the Centenary celebration and from the Parish Council for the electrical work. In addition to the grants referred to above we have received donations from Rowlands Hardware, the Women's Institute, the RCA and Paul Marshman together with a substantial bequest. The Parish Council continue to support the Hall financially and we must also thank those villagers who continue to support our annual fund raising jumble sale and the Parish Hall Lottery scheme.

Thanks must also go to a number of local tradesmen and companies who have carried out the various jobs both large and small and also our Parish Council for their continued help, support and guidance.

The financial report showed an increase in income from hire of the Halls and this exceeded the regular expenditure leaving the Hall in a good position at the end of 2014 to meet its day to day running costs.

Kath Molloy then outlined current works being undertaken and planned including re-decoration of the gents toilets, foyer and rear corridor prior to new flooring being fitted. Good Neighbours have offered to fund a new rear kitchen door and a donation from the WI is to be put towards new gates at the side of the Small Hall.

The current committee of Kath Molloy, Mike Stafford, David Symonds, Robin Reucroft, Barbara Openshaw and Bill Wilson were all re-elected unopposed.

May Day Picnic on the Green by Kevin Connell

The RCA has taken over the organisation of the May Day Picnic from Barbara Openshaw. Our thanks go to her for the 19 years she has organised the picnic. We were lucky with the weather and a fun time was had by all. The Blendworth brass band provided their usual excellent entertainment and some picnickers were even moved to dance to the music (see picture below). Refreshments were provided by Tea on the Green and the bbq burgers and sausages was provided by Tregusts of Westbourne until supplies ran out and more had to be purchased from the village shop. This was a learning experience for the RCA and we will make sure that we buy more bbq supplies next year. The band is already booked and we are hoping to reinstate Maypole dancing.

Due to the fantastic generosity of the Rowlands Castle Villagers we were able to raise £750 for The Rowan's Hospice. Hopefully we can do just as well next year.



Rowlands Castle Women's Institute

WI celebrates 100 years of Inspiring Women by Jill Hewitt, President, Women's Institute

This has been a very special year for WIs around the country. It is 100 years since we were formed in 1915 to revitalise rural communities and encourage women to become more involved in producing food during the First World War. Since then the organisation's aims have broadened; the WI is now the largest voluntary women's organisation in the UK with 212,000 members in around 6,600 WIs.

The Rowlands Castle WI streamed the recent Centenary Annual Meeting live from the Royal Albert Hall to St John's Church Hall so that members could watch proceedings and see Her Majesty The Queen, The Princess Royal and Sophie, Countess of Wessex (all WI members) who attended during the morning. The Queen opened the meeting and cut the WI Centenary Fruit Cake which proved quite a task as the cake was so densely fruited! The Royal party were then each presented with a cake of their own.



During the past 6 months we have been very busy. We have had wonderful talks from visiting speakers on subjects as diverse as 'Hidden Gems on a Walk through London' and 'Women in Art'. We have been entertained by a Madrigal Choir and by our own members with poems and readings. Member Julia Maile made us all sit up and think as she described her work helping young people to 'Speak up and speak out' and we are looking forward to July's talk on 'The History, Flora and Fauna of Brownsea Island' which precedes a visit by members later in the year.

Rowlands Castle Women's Institute

Visits over the spring have included an informative tour of Southwick House and walks at Walderton in February, Selborne in May and Hawkley in July. Our walks usually include a stop where non-walkers can meet us for lunch. Future visits planned include a tour of the BBC in London.

Our Centenary sub-committee has been working very hard and many members enjoyed a wonderful tea party in May with, of course, delicious cakes and thanks must go to Elisabeth Hall and her team. Their next project is our Centenary Luncheon which will be held in September and our immediate past President, Rona Musker, has worked very hard on our behalf to secure a very exciting speaker – The Countess of Carnarvon. Lady Carnarvon resides at Highclere Castle which is where the filming of the popular Downton Abbey television series takes place.



In addition to all this our Book Club, Craft Club, Science Group and Reading Group are very popular and a new Drama Group is being set up as we speak. Members also take part regularly in skittles evenings, fun scrabble and darts competitions. Coming up shortly is our fund raising coffee morning and we will have our usual stall at the Village Fair selling exactly what the WI is famous for – jam and cakes!

The WI plays a unique role in providing women with educational opportunities and the chance to build new skills, to take part in a wide variety of activities and to campaign on issues that matter to them and their communities. If you are interested in attending a meeting (2nd Monday of each month except August) to find out what we do, please don't hesitate to contact me by email jillhewitt2@icloud.com or by phone on 023 92 412941.

Local Council News

Summer Report

by Chairman of the Council, Cllr John Pickering

As I write this article, the sun has been shining for most of the week and long may it continue, especially for the Village Fair on 4 July!

The Elections on 7 May provided an arguably unexpected result for the country at Parliamentary level. We congratulate George Hollingbery on his re-election as MP for the Meon Valley Constituency. Holding District and Parish Council Elections on the same day meant turnout was undoubtedly increased all round. We wish the former District Cllr for Rowlands Castle, Marge Harvey, well after her years of service, and welcome her successor, Malcolm Johnson. Likewise, we congratulate Ken Moon on his re-election, and welcome the newly-elected Tony Denton, as District Cllrs for Clanfield & Finchdean.

The Rowlands Castle Parish Council (RCPC) elections were uncontested. 3 councillors stood down (former Cllrs Greg Beckett-Leonard, Brian Harpur and Malcolm Johnson), 6 councillors were returned unopposed (Cllrs Liz Longman, Kath Molloy, John Pickering, Steve Protheroe, David Symonds and Bill Wilson), and Andy Lee became the new councillor for Finchdean Ward. This left RCPC with 2 vacancies which have since been advertised in the local press, on noticeboards and RCPC's website, and via The Grapevine. We have received several expressions of interest from local residents and hope to fill these vacancies by co-option at the Council Meeting on 6 July. May I take this opportunity to congratulate all our parish councillors and I look forward to working with them in the future.

As you may already be aware, in April this year EHDC granted permission to outline applications for development at both Land South of Oaklands House ('Oaklands II') and Land East of Horndean (LEoH), the latter after the Secretary of State had confirmed he did not wish to determine the proposals himself. Developers' contributions agreements are currently being finalised, and we will then await full applications for both developments in the next year or so. Part of the development of LEoH is on land within Rowlands Castle Parish but, despite RCPC's protestations, EHDC has resolved that any dwellings on said land will count towards Horndean's housing targets rather than those of Rowlands Castle. That said, EHDC has agreed that developers' contributions, and a portion of the council tax from such dwellings, will go to Rowlands Castle Parish Council. RCPC has also been invited to be represented on an LEoH Development Panel which will identify how best to use developers' contributions to provide facilities for the whole community. RCPC maintains a rolling 'Wish List' of projects on which such contributions could be spent within the Parish. This List is reviewed on a quarterly basis, and any suggestions from residents and/or local organisations are gratefully received.

After the Approval of the Joint Core Strategy, Part 1 of the Local Plan, in May/June 2014, RCPC has now made considered representations on both consultations regarding EHDC's draft Allocations Plan which constitutes Part 2 of the Local Plan, and specifies

Local Council News

where new development will go. Amongst RCPC's concerns is the retrospective nature of the draft Plan, the lack of attention to the mix of dwellings or any cost vs benefit analysis, and the fact that the process appears to be 'supply driven' without adequately reflecting evidenced need or demand. RCPC also remains concerned to protect the green spaces between the village and neighbouring villages/towns.

At its first meeting after the Elections, RCPC discussed priorities for the benefit and enhancement of the Parish. Among those identified are:

Provision of defibrillators in the Parish - We aim to provide at least 2 defibrillators within Rowlands Castle Parish, and hopefully more if funding allows. You may have seen similar devices around Forestside, Compton and West Marden and also further afield. Each one costs about £1400, including a lockable cabinet which is opened with a code from the emergency services. They will be highly visible and accessible, and designed for the 'lay' user to operate. A fund-raising campaign has already begun, with pledges so far from RCPC and Village Fair Committee. It is most important these devices are used in conjunction with cardiopulmonary resuscitation (CPR) to maximise the chances of survival from a cardiac emergency, so a fair proportion of the funding will go towards training volunteers to perform CPR.

RCPC Communications - We will upgrade the Council's website to make it more user-friendly and informative. We plan to incorporate social media to encourage feedback from as many residents as possible. We aim to hold regular liaison meetings with local organisations, businesses and other stakeholders, to build on the strong sense of community within the Parish.

Rec Ground Play Area - As part of a joint project with the Village Fair Committee, we propose to renovate and upgrade the Play Area equipment. Our plans will be guided by a recent survey of Play Area users. Initially, we are hoping to re-paint much of the original equipment and re-lay the rubber safety matting. We are aiming to install a basket (or 'nest') swing and, if funding allows, an inclusive roundabout which will be level with the ground to enable less physically able children to access and play on it more easily.

Pavilion - The Pavilion Extension project is largely complete, though we are still pursuing the contractor regarding various outstanding matters before the final bill is settled. Whilst this project has taken far longer to complete than originally foreseen, many have commented favourably on the end result. We are particularly pleased to see the new publicly-accessible WCs are proving popular, and are grateful to our Groundsman, Bill Street, for keeping them so clean and tidy. The next step is the refurbishment of the original internal parts of the building. We shall be seeking funding to renovate the 2 changing rooms, the original officials' changing room and the kitchen.

Local Council News

Rec Ground Pitch Surfaces - Improvements to the surfaces are planned, and we are taking advice from staff at Havant Borough Council and Rowlands Castle Golf Club as to the best course of action. Much of the suggested work should be undertaken in the autumn/winter when the ground is wetter and can really benefit from the recommended treatments.

Rowlands Castle as a ‘Gateway’ to the South Downs National Park - We are proud of Rowlands Castle’s status as ‘gateway’ to the Park; indeed 40% of the Parish lies within the Park. To date, we enjoy good working relations with SDNPA members and staff, and we will look to build on those relationships as the Park formulates its own Local Plan over the next few years. We will look to raise the appearance and profile of our local station, to encourage greater non-vehicular access to the Park. We will aim to provide more cycle parking in the village, and develop a series of ‘Walks and Rides’ into the Park from the village centre.

Finally, the Local Government Boundary Commission is currently conducting an electoral review of Hampshire. At present, this Parish is split between the Divisions of Catherington and Petersfield Butser. Local county councillors have suggested the whole Parish be moved to within Catherington Division. RCPC will be considering whether to make its own representations to the Commission, and residents are also encouraged to express their views on the subject. For more details, see local noticeboards, HCC’s website or contact the Parish Office.

So, as you can see we have a busy schedule, and we look forward to the challenges ahead. Enjoy your summer!

Highways (roads/pavements, flooding/drains, street lighting, overgrown vegetation etc)

HCC Contact Centre: 0300 555 1388

Report on-line at: www.hants.gov.uk/roadproblems

Rights of Way (footpaths, bridleways, pavement etc)

HCC Contact Centre: 0300 555 1391

Report on-line at: www.hants.gov.uk/rh/row/problem-report.html

East Hampshire District Council (waste collection, planning matters, environment)

Main Switchboard: 01730 266551

Website Home Page: www.easthants.gov.uk

First Report by Malcolm Johnson

Please let me introduce myself as your new East Hampshire district councillor following Marge Harvey's decision to stand down after eleven years in that role.

As many of you will know back in May there was a three-way contest between me, Catherine Billam, well known to many in the RCA and Greg Beckett-Leonard who was a colleague of mine on the Rowlands Castle Parish Council.

East Hampshire District Council comprises 44 councillors and this year nearly half the previous members of the council stood down resulting in 18 new members joining the council for the first time. The team at Penns Place have put in place an intensive period of training to enable us new folk to get familiar with the range of services and procedures undertaken by the council on behalf of the residents and businesses in the district.

As you can imagine us "new folk" are currently going up the steep part of the learning curve absorbing the many aspects of being a district councillor. I have been allocated to the Licensing Committee which handles among other matters taxi and private hire vehicle licenses, alcohol and premises licensing.

Coming from Rowlands Castle, as you will understand I have a continuing interest in planning matters but before I can be considered for membership of the planning committee there is significant amount of training to be undertaken followed by an exam which must be passed before I will be eligible for the planning committee. I would not expect that to happen this year. However that will not prevent me from representing the village on future planning issues for, as a ward councillor I will be free to address the committee at their meetings on Rowlands Castle planning applications. I have been invited to join an informal panel who will examine relevant matters relating to the large development on the land East of Horndean with the sole purpose of representing the interests of Rowlands Castle so as to achieve the best possible outcome for the village minimising any adverse impact where possible.

What I have learnt is that EHDC under its Joint Core Strategy development plan that was approved last year; the district now has at least an identifiable 6 year housing land supply which will start to ease the pressure for further developments, not least in Rowlands Castle where, with the recent outline approval of the development on land South of Oaklands the village will deliver its required housing

District Council News

numbers target. That's not to say that other sites that have already been identified in the Strategic Housing Land Availability Assessment might come forward in the near future but the village now stands a better chance of resisting them at present. And that will be helped by a village Neighbourhood Plan being in place. The ongoing saga of the extra car parking at Links Close has now moved a step closer with "invitation to tender" documents now due back from contractors by the 15th June. So hopefully we'll see some progress on that before year end!! Before the election I gave a commitment to offer a local surgery which in conjunction with Marge Harvey, who remains a Hampshire County Councillor, I intend to provide. Courtesy of the village café Marge and I will be available between 1100 and 1200 on the first Thursday of each month so feel free to come in and discuss any issues on which you think we may be able to offer assistance. I can be contacted at EHDC via the following email:

malcolm.johnson@easthants.gov.uk or by phone 92412096.

County view by Marge Harvey

As you all know by now, I stood down at the election and Malcolm Johnson has taken over as your new District Councillor. I wish him luck in his new role, but I really don't think he will need it as he seems to be on top of everything already, so please contact him with any worries that you may have. We are still holding our surgeries in the cafe on the green on the first Thursday of each month and the police will join us when they are able.

Just for some information about what is happening at Hampshire, the chief executive has decided to step down and will be leaving in October, so the hunt is now on for a replacement for him. He has been at Hampshire for eight years and has steered the council very wisely.

Autism has been something that I have been dealing with for some time now and it seems that it has mushroomed with more and more children and adults being diagnosed. This, of course will cost the council a great deal of money as with children need lots of care taken with their education, making sure they are placed in the right school, with more people per child needed to help these very vulnerable young people and also with adults needing more support.

I was very happy to be present at the awards for volunteers with two awards being given to people in the village. The Good Neighbours and the Flood Action Group both received recognition for all of the very hard work they do and I was very happy to be able to support them both.

Hampshire County Council News

There are many other things happening at HCC and as you probably will know, the resurfacing of Wellsworth Lane has taken place and I am very pleased that this lane has finally been resurfaced as it really did need it! The work advertised to be done on Bowes Hill has been put back until next financial year and this is probably for the best because the traffic calming is due to happen this financial year and that may need digging up parts of the road, which would be unhelpful.

I have asked, as I told you before, that Castle Road and Woodberry Lane has a weight and width limit placed on it for obvious reasons. The amount of large lorries using these roads is ridiculous, with cars parked in Castle Road on one side leaving a narrow lane for other vehicles to pass, it becomes impossible to use the road easily. In Woodberry Lane it is almost dangerous to walk on the footway when large lorries try to get along the road and when they do get as far as Glendale, they usually have to turn around and go back. I really do think that these drivers are dyslexic as there is a sign that says they shouldn't use this lane. I do think that the signs need to say NO HGV's instead of unsuitable for HGV's, but they probably still wouldn't take any notice, but at least they could be reported to the police!

I am pleased to see that the volunteers for speed watch are taking speeds along Finchdean Road and would like to thank them for all the work that they do on our behalf. After a meeting with them, they made it very clear that they really do need some extra volunteers for Rowlands Castle, so if you are concerned about speeding traffic, please join them, I can point you in the right direction.

I have already flagged up the problems on Whichers Gate Road when the new houses are built as I do think that the traffic impacts are much worse than expected by our officers at the County and I have also asked for an audit to be done on the double roundabout because when the houses are built on Hazelton Farm this roundabout will make it impossible for traffic from the village to move easily, it is bad enough now!

Durrants Road speeding has been clocked as the worst road in the southern parishes and some speeds are as much as 60mph. I think that this will have to be looked at at HCC, because it cannot continue like this.

This is only a snapshot of the work that I am involved with at HCC but I would like to ask that if you have any problems that I can help with that you either come to the surgery or call or e mail me and I will do my very best to help.

1st Rowlands Castle Scouts

“The most worth-while thing in life, is to try and put happiness into the lives of others” Sir Robert Baden-Powell

by Nicci Lucas

All three sections have been enjoying a fun packed summer term. We started the term by celebrating St George’s Day on 23rd April. This was kindly hosted by 3rd Hayling Island Scouts where some of our boys and girls took part in a parade on Hayling Island, then attended a traditional service.

Welcome to Ernest, Henry, Ryan and Andrew who have been invested into our Beaver colony and also to Lucas, Pentor and Ed who moved up to Cubs from Beavers. The Beavers have been busy learning about where our food comes from and healthy eating and attended a fun evening at Tesco tasting different foods. They have also worked towards their first aid badge and had an evening of dentistry learning the importance of looking after their teeth. We have also been making the most of the summer evenings and enjoying some time in the Stansted woods exploring the wildlife.



We would like to welcome Reuben into our Cub pack and we hope that he enjoys his time with us. The Cubs have learnt more about their local surroundings this term and spend some beautiful evenings walking around the village and Stansted woods. The older Cubs have actively completed some of their challenge badges which will go towards their Silver award. They had an attempt at archery last week which was fantastic and have been learning about charities and different faiths as part of their promise badge.

Congratulations to our scouts Ben, Augustin and Tom who have been working towards their expedition challenge and this term completed an expedition over the first weekend in May. This involved being able to map read, understand coordinates, plan their route, equipment, menus and be self sufficient for 48 hours. They all returned back at the scout hut after 2 days on time and in

1st Rowlands Castle Scouts

one piece!! And well done to the Scouts who attended Gunnell Camp the weekend of 20th and 21st June. This camp is run by the explorers and the scouts have to be totally self sufficient for the weekend. Rowlands Castle Scouts came home with the cup for the “most improved”you have some very proud Scout leaders...well done indeed!!



Also I would like to congratulate Ros, Jonathan, Paula and James as they were all invested as leaders. Without them and our other volunteers our scouting experience wouldn't exist so I would like to take this opportunity to thank you all. We are constantly looking for new leaders to guide and develop our troops, so if you are interested then please do contact me.

Letters to the Editor

Regarding Brian Iredale's comments in the spring edition about parking in front of the village store.

It is obvious he is unaware of the highway code rule 243 which states clearly that you must not park less than 10 metres (32feet) from road junction. Also you must not park (or wait) where a kerb has been lowered to aid pavement access for prams/pushchair and for wheelchairs/disability Scooters.

Parking in the aforementioned position creates an obstruction for vehicles (especially the local bus) exiting either Bowes Hill or Woodbury Lane. Each of the above rules are included in statute law RTA 1988.

Regarding the yellow lines, these have existed at the position he mentioned for a long time but frequently are obscured by the mud/shingle etc that gets washed down the road whenever it rains, however that is NO EXCUSE and Mr Iredale deserves his parking ticket, if only for his lack of knowledge of the law and the lack of consideration displayed for other road users.

Phillip Granshaw-Evans

Editors note: Thank you to Phillip for providing this detailed explanation of the law as it pertains to parking around the village store. (content edited)

Girl Guiding

A Very Busy Spring for Rowlands Castle Girl Guides

by Jane Beveridge

Girls in Rowlands Castle Rainbows, Brownies and Guide Units have been busy this spring, with Rainbows continuing with their programme looking at growing things to eat, as well learning circus skills, singing, cooking, and playing games.

In February a group of Brownies, Guides and their parents joined girls in all sections from Havant Division on the foreshore at Havant to see the sun rise and celebrate World Thinking Day. Guider, Jane Beveridge, explained that this was the day all Scouts and Guides across the world think of each other and celebrate being part of the organisations set up by Lord and Lady Baden-Powell.

The Brownies have continued working on their Disability Awareness and Out and About Badges. They have surveyed various premises in the village to assess them for ease of use by the disabled. They have also enjoyed a walk to the home of one of the Brownies, a farm, where they able to get up close with very young lambs. A lovely April Saturday was spent at Sandy Acres, a beautiful camp site near Wickham, during which the girls learnt to line dance, made musical instruments, played chime bells and joined in some campfire singing. More recently they have enjoyed a visit to the Royal Marines Museum where they were put through their paces to earn their Agility Badge.

The Guides have also earned their Agility Badge having faced their fears and been drilled by the Royal Marines. A few Guides enjoyed a challenging and fun weekend at the PGL Activity Centre on the Isle of Wight, small groups being privileged to visit the bridge of the car ferry in each direction. There the Guides learnt a bit about navigation, how the ferry is operated, radar and ship movements.

This is working towards their Fastnet Challenge Badge which is supporting the yacht entered in the Fastnet Race to be crewed by Girlguiding members. Further to this Challenge Badge, in half-term Guides had a very enjoyable day travelling to Portsmouth on the train, having a long session on the Miniport boats in the Dockyard, learning about rope making, having a session of bowling and enjoying ice cream on the seashore. Both Brownies and Guides joined Horndean Parish Council's recent BioBlitz event at Dell Piece West, Brownies pond-dipping and Guides attempting to trap moths and learning about bats, and how to find them.

Secateurs, Tomato Sauce and Exotic Fruit and Flowers

by Elisabeth Hall, Chairman

Our lecturer from Sparsholt College gave us tips on maintaining and cleaning our garden tools — the importance of using sharp tools so as not to introduce infection to the plants when pruning. To clean your secateurs, soak the blades in tomato sauce (but it must be Heinz) for 24 hours. These pictured spent some weeks buried in our compost heap, so see for yourself from the before and after treatment pictures how effective his advice was



Will Brian Kidd come across any of these exotic flowers and fruit as he judges the Rowlands Castle gardens entered for the Horticultural Show? Can you name them?



Pat Carter's annual plant sale in May was well supported. Fashions and trends in plants change from year to year, and the climate change forces us to rethink short-lived and thirsty planting.

In June and July members conduct gardens visits, and for the first time six Rowlands Castle gardens were visited on a lovely afternoon, and refreshments were enjoyed. Two of them are shown here. All the money raised has gone to charity. The garden hosts gathered for a prosecco washup at the end of the day. The club welcomes visitors to the next talk in August on village life in the 1940/50s. Meanwhile, our programme planners have been arranging an exciting programme for 2016.



Neighbourhood Watch

New Policing Team by Tria Gibbs PCSO

This will be my first piece in your magazine as myself and two others have as of 1st April taken over this area. I would first like to introduce you all to your Neighbourhood Policing team.

PC 3952 Philly Churcher-Brown, who will be the Beat Manager. She has worked in East Hampshire for over ten years now.

PCSO 13356 Almy Toogood, who has been a PCSO for 6 yrs also in the East Hampshire area.

PCSO 11357 Tria Gibbs, myself and again I have been a PCSO in the East Hampshire area for 10 yrs.

If you would like to contact any of us then please email and we will reply as soon as we can. It might help if you cc all three of us into any message as we work different shift patterns to try and have as much cover in the area as possible. By emailing all three you will almost certainly get a fairly quick response.

Our Sgt is PS Phillip Shore who works out of Petersfield Police Station

We have a newly appointed Inspector, Louise Rooks

Our New Chief Inspector is Beth Pirie

Chief Inspector Beth Pirie has said:

“I can assure you that Hampshire Constabulary is committed to keep neighbourhood policing. My role as District Commander is to improve partnership working and commission force services to meet local priorities. Although there are overall staff reductions across Hampshire Constabulary, the changes in team dynamics, shift patterns and reducing demand on frontline officers means that the neighbourhood teams will be more accessible and visible, targeting those who commit crime and ensuring those who are vulnerable get the safeguarding measures as demand dictates whilst continuing to deliver the best possible service to victims.”

Each time I write a piece for the magazine I like to include some information about a current issue that may affect you as readers.

I have had some correspondence from a few people concerned about fraudsters making telephone calls to unsuspecting people who have bought tickets at The Theatre Royal in Winchester. They were asked to confirm details of the card they used to buy tickets. This is an attempt to get your card details. Never give your card details over the phone to someone unless you have called them

No one should ever ask you to confirm your card details over the phone unless you have made contact with a company yourself to either book or pay for something. This includes if a company calls you back to confirm your card details.

If this does happen the best thing to do is to say you do not have the card on you, finish the call and then wait at least ten minutes before calling the company back to find out if

Neighbourhood Watch

they have called you. The fraudster may even try to give you an alternative number to call, please do not use that number, find the number yourself as this again may be a bogus number.

Please don't forget to sign up to www.hampshirealert.co.uk

You can get regular updates of crimes that are happening in your area straight to your mobile phone. It is free and very informative.

Contact details.

PCSO 11357 Tria Gibbs. patricia.gibbs@hampshire.pnn.police.uk

mobile phone 07554775521

PC 3952 Churcher-Brown phillipa.churcher-brown@hampshire.pnn.police.uk

PCSO 13356 Almy Toogood almera.toogood@hampshire.pnn.police.uk

USEFUL LINKS

www.crimereports.co.uk

www.twitter.com/HantsPolRural

www.hampshire.police.uk

PCSO Tria Gibbs 11357 Butser District SNT

Women's Fellowship in Rowlands Castle

In my previous resume about Rowlands Castle Women's Fellowship I wrote about our companionable afternoons and lively chat. As I write this report I can say that today we have had a lovely cream tea altogether, aligned with a Bring and Buy Sale and a really sociable afternoon. We have continued to enjoy our Games Afternoons, then Debating current issues both local and national, and have even played our own version of Call My Bluff! We have outings and an end of season meal to enjoy before our summer break in August. Everyone has a chance to suggest ideas for our next programme. We continue to meet at St John's Church Centre every 1st and 3rd Tuesday Afternoons from 2 till 4. Our backgrounds, experiences, interests and skills are very wide ranging and we all enjoy one another's company. If you are interested in coming along to our small very friendly group please phone Claire Stanley 02392412340 – that is just what I did when I moved to the village just a few years ago.

Craft Fair

Rowlands Castle Craft Fayres

by Hilda Tart

The Craft Fayres are held on the 1st Saturday in the month from 10am to 1pm in both halls at the Parish Hall, Links lane, Rowlands Castle PO9 6AD.

Future dates are 4 July, 5 Sept, 3 Oct, 7 Nov and 5 Dec.

Admission is free and refreshments are available

10 new stallholders have joined us since April and have helped to extend the range of crafts provided. Pottery, polymer jewellery, decorated candles, picture framing, spinning and dyeing and delicate beading have been recent additions.



Several artists have also joined us with a variety of styles and you can see Chinese flower art, portraiture and local scenes of Chichester.

In June we were able to have demonstrations of beading and spinning.

We aim to provide high quality crafts made by local people.

If you would like to be considered for a stall please contact us at: rowlandscastlecraftfayre@gmail.com

We can be found on Facebook at facebook.com/rowlandscastle.craftfayre



Sands and Count the Kicks by Caroline Jordan

Joe and I moved to Rowlands Castle 3 years ago. We had a wonderful wedding in the mountains in Austria in February last year. I was lucky enough to fall pregnant quickly after our wedding and we were to become parents for the first time. I was due on 1st Jan 2015. I had a very normal, low risk pregnancy with little symptoms. Sadly on 18th December our world fell apart. I was 38 weeks pregnant when I noticed that I hadn't felt my baby kick for a while. Just to be on the safe side I went to St Richards in Chichester to check that everything was ok. I laid on the bed while the midwife searched for a heartbeat. Those words will haunt us forever..." I'm sorry there is no heartbeat." Our little girl had died in my tummy when I was full term. I gave birth to Sienna on 23rd December 2014.... Our Christmas angel.



We have spent the last 6 months trying to come to terms with our loss and make some sense of this tragedy. We have become familiar with two charities Sands and Count the Kicks. Sands are heavily involved in research to find out why 17 babies are dying a day in the UK through stillbirth, that's 1 in 200 pregnancies. For many couples, including ourselves, there is no reason for losing their baby. Sienna was a healthy baby girl who died for no known reason. Sands also provides support to bereaved parents.

Count the kicks encourages women to monitor their pregnancy and establish a pattern to their movement. Understanding your babies movement pattern and reporting any changes to your midwife could save lives.

Joe and I were keen to raise some money for these charities. Sadly a week after we lost Sienna a friend in Southampton also lost their baby through the same circumstances. The friends and family joined together and rode 200 miles from Derby to Rowlands Castle to raise awareness and raise some money. We also had a family fun day on the village green. In total we raised £8000 for the two charities and there are still donations coming in.



We hope that research will find out why babies are dying in the womb and hope that through this tragedy other pregnant woman will be more aware of their bodies and report changes in movement to their midwives. We currently have one of the highest stillbirth rates in the western world. We hope that our small contribution will go some way into finding out why this tragedy happens. Should you wish to contribute to these deserving charities the link is below

www.Justgiving.com/Sienna-Robyn



Summer 2015

by Kay Pennicotte-Henrie Head Teacher

Our Outdoor Learning project continues and we are trialling Forest School lessons this year. One teacher is being trained and the children are learning to tie knots, make shelters and use fire safely to cook. The children love these lessons and they encourage teamwork and cooperation which are important lifelong skills. If any villagers would like to see or help out during forest school lessons please contact the school office for details.

In the summer we are having two tree houses built that will become a classroom base for outdoor learning. The children will be able to shelter from the elements and share ideas without bringing the forest back into school!

We are grateful to all the fundraising that has been organised by the PTA and the outdoor learning group to raise £20,000 for this project. The tree houses are made from natural products and will enhance the current play area.

We have also purchased some outdoor musical instruments made from recyclable materials that are weather proof.

The children continue to be involved in the planning of the outdoor learning area and have some great ideas.

We now have a School Council and an Eco- Council that are busy



improving our school.

We continue to work with other schools and have been involved in workshops for gifted and talented children for Maths, English and Science. The children work with other schools and present their work at the end of the day. Our children have performed excellently at these events and were the winners of the maths event in March.

The Church continues to be an enormous support to the school on a daily basis. Many members come in and read with the children and attend our events. We have a fortnightly Church Worship time and the children look forward to acting out Bible stories. Recently Year R went to the church for a 'Wedding' and Rev Trev explained the rituals of this occasion.



The children love being in Rowlands Castle and we have used the local facilities in many ways. The train is a brilliant form of transport for us to visit Portsmouth and is also much cheaper than a coach. Recently we used the Village Hall for our 2015 Talent Show; an amazing night and the venue made it even more special.

We are very fortunate to be situated in such a beautiful village but it is the support we receive from so many villagers that makes it special. Thank you to everyone for your support this year it is much appreciated and makes a difference to the lives of children at the school.

St John's School

Sweet success for St John's School Summer fair by Anita King, Chair, St John's PTA

On Saturday 13th June, families from St John's and further afield turned out in their droves for the school's Annual Summer Fair. The sun shone, as the fair was opened by Rev. Trevor Filtness followed by some very talented musicians and singers from The Petersfield School. With this year's fair theme being 'Fit, Fun and Active', everyone was kept entertained by the bungee run, demonstrations of Judokan, dancing, Beat the Goalie and the Active8minds' obstacle course. The vintage double decker bus ride around the area was as popular as ever, as was the skateboard run, and the children got the chance to throw sponges as Headteacher, Kay Pennicotte-Henrie and Year 3 Teacher, Miss Binstead each took a turn in the stocks.

Thank you to everyone who helped make the fair a success, from the WI and St John's church parishioners who manned the refreshments and cake stalls to all the business who donated lots of fabulous raffle prizes. In total the fair raised £3,500 profit which will pay for a new PA and sound system for the school.



St John's School



Photos (left to right) by Vicki Game, Natalie Voller, Karen Urquhart, (2), Jess Hext-Harvey, Natalie Voller, Karen Urquhart

Domestic Heating Advice

Another Money-Saving Idea

by Nic Radcliffe

First this time is a ‘Thanks’ for the positive feedback about the Voltz app that I wrote about in my last article. If you missed it, Voltz is a simple and quick way of switching energy suppliers and quite a few people have told me they’ve happily used it. I too switched with them and will save over £200 off my annual bill – and I thought I was already on a low tariff! So if you haven’t already, I’d urge you to give it a go.



Second I have an easy way of freshening up some rooms in your house without spending lots. There seems to be a big increase in people renovating their properties rather than moving. So a lot of my work recently has been full bathroom refits. However just a few changes can make a big difference to a room without having to spend big money on a full refit. More and more people are asking about designer radiators. There are quite a

few options and all add a touch of class to a room. I’ve recently changed my parents’ ones in the lounge.

These are a modern take on an old classic and really kick out the heat too.



Another style that is really taking off is the vertical radiator. Great for saving wall space if it’s limited. Again there are many options in these too. Here’s the one in my house, I put it in to make space for a corner sofa. True you can always put a sofa in front of a radiator but you are definitely losing lot of heat circulation that way. Any good heating engineer can help you with this.

DREWS FARM

Drews Farm is situated between Rowlands Castle and Forestside. We have reintroduced livestock onto approximately 20% of the farm. Dexter cows and a mixture of Welsh Black Mountain and Easy Care Wiltshire sheep graze on some of the best low lying chalk pastures of the South Downs National Park. They are not fed on any supplements, additives or prophylactic antibiotics to encourage quicker growth and weight gain.

Approximately every 3-4 months we sell mixed boxes of Beef and Lamb/Hogget.

We try to produce the best tasting, healthiest beef and lamb without compromise for our family and you.

The beef is hung for 28 days to achieve a superior taste and is vacuum packed for optimum freshness. The boxes are 7-10kg of mixed cuts.

To reserve your box or to put your name on the mailing list please email : annafawcett@mac.com Or call : 07775641638

Visit our website for further information: www.drewsfarm.org

Delivery is free to areas within 5 miles of Rowlands Castle.



Caroway
Est 1980

**For all your
fencing needs**

Suppliers & Erectors of Every Type of Fencing Including:
Chainlink • Palisade (wood or metal) • Panels
Closeboard • Weldmesh • Posts (concrete or wood)
Security Fencing • Trellis • Gates



We also offer a friendly reliable and competent skip delivery service to all local areas. Our skip sizes are mini, midi and maxi and we also provide a Grab service.



**TRADE
AND
PUBLIC
WELCOME**

Visit our website for any fencing prices or call 023 9241 2768
www.caroway.co.uk

Caroway, Station Yard, Bowes Hill, Rowlands Castle, Hants PO9 6BP

The Fourth Dimension of Space

by Frank Philpot

If you are unfamiliar with the fourth dimension of space you will be pleased to find that you are not alone. I recently gave a poorly attended lecture in Havant so I thought that you might enjoy a little foray into the fourth dimension if only to show how simple the subject is once one has grasped the concepts.

We have all heard of space-time as something that links space and time in a confusing and unfathomable way. To clear up the confusion one has to know time is multiplied by a speed to turn it into distance like the other three dimensions which we use every day. Now the fastest speed is the speed of light so this is the speed to use as we can not go faster than time to send signals into our future.

First concept The fourth dimension of space is time multiplied by the speed of light.

Wow! Do you see what this means? It means that when the big bang went bang and all the energy of the universe was set free, it came out as pulses of light called photons travelling outward at the speed of light to form an ever expanding four dimensional sphere and we are on the surface of this sphere.

Second concept Time is the expansion of the Universe.

Third Concept We are photons that exist on the edge of the Universe.

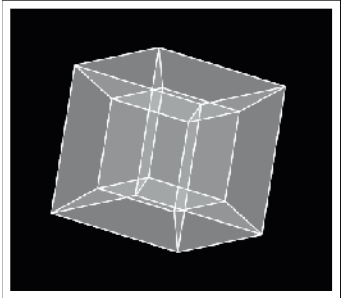
Fourth concept All our sub atomic particles are made out of this surface.

Fifth concept Relative velocity means moving in a different direction through four dimensional space.

Sixth concept Because moving objects are pointing in another direction than the observer, they look shorter in the direction they are going and the time they experience is slowed, simply by perspective in four dimensions.

The good news is that there is only one velocity, as every thing is always going at the speed of light.

I guess the difficulty is grasping the concepts.



Sparkle Domestic Cleaning

Local, Family Run Business

Est. 2002

- **Weekly, fortnightly or Monthly Cleans**
- **Ironing Service with free collection & delivery**
- **Fully Trained, Uniformed & Insured Staff**
- **Reliable Service with Attention to Detail**

www.sparklehomeclean.co.uk

TEL: 023 9246 9633 OR 07973 953337

Email claire.sparkle@btinternet.com

Rowlands Castle Historical Society

The society now has a permanent display cabinet for small items. It is in the small Parish Hall alongside other items of our village's past. If you have any artefacts that you would like to donate, either temporarily or permanently, please contact us.

Thank You

Paul Marshman RC 412028

Barbara Openshaw RC 412400

We want to hear from you.



Do you have something to say? The RCA Village Magazine belongs to the whole Village and serves as a channel of communication between villagers. If you have a point of view, write a letter and we'll publish it.

Simply write to Editor, RCA Village Magazine, 19 Mallard Road, Rowlands Castle, Hampshire PO9 6HN. Email to editor@rowlandscastle.com

Village Museum

Rowlands Castle Heritage Museum Call for support

by Alan Drinkwater President RCA

In response to an earlier Grapevine email, several residents offered donations and also willingness to volunteer in the event of the acquisition of an iconic model railway depicting The Green and railway station with trains during the closing stages of the War.

The model railway was offered to the Rowlands Castle Association for purchase but has proved more expensive than hoped, although we are maintaining an interest in its acquisition. But a local resident has also kindly offered another similar model railway with some rolling stock. We are preparing to acquire this second model railway.

The matter of where the model railway will be housed has led to a larger project involving exploration of the availability of the Railway Station for lease from SW Trains for this purpose. Inquiries show that the railway station is available for community use on a lease at a peppercorn rent

The opportunity to develop a Rowlands Castle Heritage Museum in the railway station is now being pursued by a working group under the auspices of the RCA. A survey has been commissioned to assess the suitability of the building and the related costs of refurbishment are being studied.

Further fund raising for this larger project is also being sought. As with the successful launch of the U3A, once established, the Museum would become a charity with its own administration. A number of discussions with other clubs and societies have taken place, with promising responses.

We will be particularly interested to learn whether you as local residents are interested in enjoying the opportunity of a local museum, and are willing to support its creation in a number of ways. Your responses and comments to the following section will be most welcome as they will help us assess its viability, usage and support.

We have a wonderful past, dynamic present and ambitious future, as a much loved and revered village. What better way to present this.

Village Museum

Please circle or tick the appropriate responses below:

“I support the idea of a local Rowlands Castle Heritage Museum”

Strongly agree - agree - don't mind - disagree - strongly disagree

I am interested in volunteering:

as an archivist

as an administrator (secretary or treasurer)

as a fundraiser

as an attendant

as maintenance assistant or housekeeper

as a manager or volunteer co-ordinator

as a trustee

providing refreshments

conducting local researches

I am willing to donate £--- towards the museum

I have local memorabilia which might be of interest

Please indicate any experience or qualification which might be helpful

Name;

Address:

Email:

Telephone:

Thank you for taking part and returning this information gathering.

Please return to:

Alan Drinkwater 21 The Peak Rowlands Castle PO9 6AH

Or email your offering to alan.drinkwater@btinternet.com



Have
you seen

the **NEW** signs?

Actively selling and letting in your area

14 The Green, Rowlands Castle, Hampshire PO9 6BN

023 9241 0014 sales@hpd-estates.co.uk lettings@hpd-estates.co.uk

PORTSMOUTH HIGH SCHOOL

Open Morning

Saturday 3 October

9.00 to 12.30

Ranked 'excellent' in all categories of Independent Schools Inspectorate Report June 2015

School minibuses pick pupils up daily from Rowlands Castle

An independent school for girls from Nursery to Sixth Form delivering outstanding results...

www.portsmouthhigh.co.uk



Portsmouth High School

023 9282 6714 • admissions@por.gdst.net
Kent Road, Southsea, PO5 3EQ
Part of the Girls' Day School Trust network of schools

Rowlands Castle Painting Society

Annual Art Exhibition

by Terry Devaney

Rowlands Castle Painting Society recently held their annual Art Exhibition and were rewarded with a good response from the public. This year the Society joined the Greater Havant Art Trail, a new venture, which was deemed to be a big success. Pat Hoper who looks after all the catering for the Society served tea and cakes in the small hall, the tables looked very pretty each with a small arrangement of fresh flowers, thank you Pat! (and helpers) Paddy Holmes the Patron of the Society took in the Exhibition before returning to Italy.



Now the artists are set to enjoy a Summer of outdoors painting, weather permitting. There are some interesting venues lined up to visit, we are grateful to Gill Dollery for organising the outings, she puts a lot of thought into organising these picnic/painting days out. For information on where the meetings are and on which dates please go to the website: www.rowlandscastlepaintingsociety.org.uk

New members are welcome, regardless of ability, if you have thought you might like to take up art, or already enjoy drawing and painting, why not join one of the outings, where you can meet with like minded people! If interested in joining our Society please tel: John Davis 01243 371662



Last chance to sign up for cashback

by Bill Robertson EHDC

East Hampshire and Havant Borough residents don't have long left to sign up to receive cashback for improving the energy efficiency of their home.

The East Hampshire District Council and Havant Borough Council scheme is running until 31 August and offers residents a whopping 50% cashback for installing solid wall insulation and 25% cashback on a range of energy-saving measures including new boilers, double glazing and cavity wall insulation.

As well as making homes cheaper to heat, solid wall insulation can also help reduce mould and condensation by preventing moisture build up and can increase the value of a property.

A local resident, Chris Chappell, has had solid wall insulation installed and received 50% cashback through the scheme. She said: "Our home is much more comfortable and costs less to keep warm now. We couldn't have carried out the work without the help of the EHDC money.

"Our energy bill is noticeably smaller and our friends have been saying they can't even notice a change in the appearance of our home. "I urge anyone thinking about making energy-saving improvements to get in touch and see if EHDC can help before the scheme ends."

To register your interest and receive your free information pack email bill.robinson@easthants.gov.uk or call 01730 234 329.



DACD (Rowlands Castle) Cricket Club

Early Season Report.

by Jonathan Law

The 2015 season started with the good news that the Pavilion was back in action after completion of the refurbishment project. We would like to thank the Parish Hall for providing alternative facilities for serving teas last season but are pleased to have facilities restored at the Recreation Ground. The playing season got off to what seems like our usual mixed bag. Weather contrived to cancel our first two home games and lack of performances on the field saw us lose 5 of our first 6 games. A solitary 20 over win against BaE at home was the only plus point. Conceding high totals when bowling first didn't help and being dismissed for 60 whilst chasing 129 to win against rivals Clanfield was particularly galling.

The tide was turned with a good win away against Rogate. A lovely venue saw Director of Cricket Meredydd Hughes lead from the front with 74 runs and 3 wickets to earn a fully deserved Man of the Match award. Although how he managed 11 votes out of 11 when you are not allowed to vote for yourself remains to be explained. (Sepp Blatter eat your heart out). The run was continued with a win at home to Allstars with Meredydd bagging 5 wickets and an unbeaten 25 backed up with runs from Andy Robinson, Dinesh, Owen Hughes and skipper Guy Andrews. The next game against old rivals Milcomms at Waterlooville saw a good bowling performance restrict the opposition to 107 (Guy Andrews 3 wickets) before the top order, Meredydd, Dinesh, Andy and Owen all scored runs to see us home with 2 overs to spare.

The winning streak ended with our first Sunday home game of the season against new opposition Hythe & Dibden. They put out a strong Sunday XI containing 6 first team players who proved too much for DACD as we succumbed to a 77 run defeat. It was however a glorious day at the Recreation Ground and our first opportunity to fully put the new pavilion facility through its paces. A good day all round for cricket.

The final game of this report saw DACD win the Bill Young Cup against the Tax Office for the 4th year running. Man of the Match Colin Lord scored 35 in a total of 131 off 20 overs before a good all round bowl-

DACD (Rowlands Castle) Cricket Club

ing performance restricted Tax Office to 89 for 3. The occasion was tempered by the absence of Bill Young Snr who passed away last year and a toast was raised to father and son, both true cricket lovers.

The deadline for copy means that I can't include a report on our annual tour till the autumn edition. This year we are based in Taunton and if you read of an upturn in profits in the cider industry in the interim you will know why. Finally, off the field, we entered a team in the East Meon CC quiz night and capped a very enjoyable evening by running out winners. I can safely report that this is the first time we have prevailed over East Meon for a number of years and hopefully can repeat our performance, but on the pitch this time, in the not too distant future.

Playing Record P 11 W 5 L 6 Cancelled 3

Jonathan Law

DACD (Rowlands Castle) CC

Rowlands Castle RVS Lunch Club

The lunch club has been in existence for 33yrs now. It provides a freshly cooked nutritious meal and is a focal point to meet together and socialise. If you wonder what to eat and hate washing up treat yourself. Make new friends, enjoy some different meals.

Or could you make a difference? Yes with a little of your time you can do just that. Be a volunteer for the lunch club. We need help with preparing the meals, no special skills are required, just a willingness to join the Happy Working Group, all instructions will be given. Contact: Vi Anthony 02392412524

Or are you a driver who could join our rota to bring and return the less able members to the club?

REWARD Making a difference to another's well being, meeting new people, making new friends.

If you are interested in coming to the club or able to volunteer or would like more information please contact Mary Williams on 02392412763

St John's Church

Upcoming Events

by Revd Trevor Filtness Vicar of St John's

It was really good this year to be able to celebrate Easter Day on The Green with our brothers and sisters from COTG, with many who don't normally worship at either church and with those who were 'visiting'. Thank you all for making it such a great day.

The newly cleared area in the churchyard is now greening over under the care and direction of Ian Hewitt who masterminds churchyard operations for us. This area will provide much needed additional space for villagers who wish to be buried at St John's. We are also looking at how we can provide additional space for the burial of ashes. Later this year we will be undertaking work to renew the northern boundary to the churchyard. And then we need to find a permanent solution for the replacement of the church ceiling which now needs constant attention.

Is all this work important? I think it is; our churches provide a continuing place for peace and rest in God's presence and love. A place for spiritual refreshment open to all and I don't mean just on Sundays. I know that many people like to call in just to 'be' or when visiting their families and friends in the churchyard which is why we ensure that the church is open on weekday mornings.

Lest you think we only concern ourselves with church repairs, and it can seem that way sometimes, as the Parish Church we also strive to fulfil our 'Mission' of showing Christ's love in action by direct involvement in the life of the Parish, and by our support and giving to local and other organisations. With other village organisations we are also looking at the continuing and growing need for practical pastoral advice in Rowlands.

Meanwhile we are all looking forward to enjoying all that summer has to offer in the village with our Rowlands Castle traditional summer events.

With every blessing

Trevor

Rev Trevor Filtness

Vicar

St John the Baptist

Rowlands Castle

07785 568056

02392 410111 (Office)

The South Downs Show and Hampshire Wood Fair



www.southdownsshow.co.uk

15th & 16th Aug



Queen Elizabeth Country Park near Petersfield PO8 0QE

A local family show with local traders,
arena acts, exhibitors, wood crafts and industry, sheep, horses,
sheepdog trials, gun dog events, kids area, local food, vintage caravans
and tractors, falcons, alpacas, Adams Axemen,
Sweep's Sheepdog Display

And we want more 'local stuff' if you've got it-
To get involved please visit the website!

YOUR SOUTH DOWNS, YOUR FAMILY SHOW

Tickets Adult 7.50 Child 3.50 Family 20.00

Contact - TerenaPlowright@gmail.com

MORRIS BUILDING SERVICES

Shaun Morris

113 Finchdean Road, Rowlands Castle, Hants, PO9 6EN

RENOVATIONS
ALTERATIONS
SMALL WORKS

ALL ASPECTS OF PROPERTY MAINTENANCE AND
REPAIRS, INTERNAL AND EXTERNAL

ROWLANDS CASTLE
(023) 9241 3130

FREE ESTIMATES
07941 742598



ARTHRITISFIRST

Exercise Classes and Home Visits

- Improve your fitness and mobility
 - Tailored to your needs
 - All ages and abilities welcome
- Classes in Emsworth, Havant and Chichester

FREE Taster Class

Run by a **Chartered Physiotherapist**
Please contact Juliette O'Hea

Tel: 02392 413885 or 07974 238787
Email: physio@arthritisfirst.co.uk
Website: www.arthritisfirst.co.uk

St Hubert's Church



All things bright and beautiful by John Bates

For, lo, the winter is past, the rain
is over and gone:
The flowers appear on the earth:
the time of the singing of birds is come.
(Song of Solomon 2: 11-12)



As God unfolds the flowers,

and their buds begin to show
He gives to us assurance
grace in our hearts will grow.
(Anon)



and such

gardens are not made
by Singing:-
"Oh how beautiful"
and sitting in the shade.

(Rudyard Kipling)

Our England is a Garden



The flower meadow around our church of St. Hubert's, Idsworth, planted last year by the South Downs National Park Authority, is now at the peak of it's glory.

Come and enjoy the wonderful sight of the church in the field surrounded by a sea of wild flowers.

What a journey so far!

by Jason Clark COTG

As we know, we, along with the things that we do, are a work in progress. With that said, what a fantastic few months it has been for us already as a Church. Once again God has exceeded our expectations by a greater margin than we could ever have imagined. Our numbers have increased in both the Tuesday and Wednesday coffee mornings and our Sunday morning services. Since March we have started a Mums, Dads, Grandparents and toddlers bi-weekly group on a Friday morning called 'Music Makers' involving music, dance, finger food and free play. This has proved very successful to all those that have joined us

We have also started a 9 – 14 age range Youth Group called S.P.E.C, held on the last Friday evening of each month. Again, numbers have been good, with an added bonus of pool, air hockey, arts and crafts and outdoor activities at the local Recreational ground.....not to mention hot dogs and a tuck shop at a small fee.

In our recent studies in The Epistle of Paul to the Galatians we have been looking amongst the many other treasures in the book, at Faith, all of which we have started these new and existing ventures “in faith”. It also reminds us of the basic yet fundamental element, that 'we should serve each other with Love' and indeed, Love is the greatest gift we can have, as true Love is patient, kind, protects, trusts, perseveres and above all.....Never Fails!

So, with all of these things happening and with the Village fair upon us – What a year it has been so far!!!

Rowlands Castle Surgery

Surgery opening hours: 8:30 to 18:00 & alternate Saturday mornings 8:30 to 12:00.

GPs Phone-in for consultations & advice” 08:00 - 08:20 Mon – Fri - Tel 02392412309

Pharmacy opening hours: 8.30 to 18.00 & Saturday mornings 9:00 to 13:00.

(Pharmacy Closed for lunch 13:00 to 14:00)

The Surgery situated at the tip of the green has been providing the village with GP Services for decades. Our attached pharmacy opened in May 2010.

New patients welcome, pop in to reception & ask for the new patient registration form

12 The Green, Rowlands Castle, Hampshire, PO9 6BN

Tel: 023 9241 2846 Fax: 023 9241 3070 www.rowlandscastlesurgery.co.uk

History

War Memorial – Auber’s Ridge.

by Tony Cowin - Historical Society

Edward Charles Hutchings was a regular in the Royal Sussex Regiment. With the 2nd Battalion, he was mobilised in 1914, and as part of Sir John French’s British Expeditionary Force (BEF), fought at Mons, retreated to the Marne, fought on the River Aisne and at Ypres. In 1915 the BEF were entrenched, facing the Germans, from Ypres to Neuve Chapelle.

The Germans had built excellent trenches, with deep dug-outs (some pumped dry by electricity), steel plate inserts in the parapet, and a number of stout concrete pill-boxes (still visible today). Critically, they established machine-gun pits ahead of their wire, with very large arcs of fire.

General Joffre suggested to Sir John French a major attack at the point where our 2 armies met, to take German pressure off the Russians on the Eastern Front. The French on our right would take Vimy Ridge, the BEF the much lesser heights of Aubers Ridge (Lat.50.59552 Long.2.825528 for Aubers village centre if you Google it!)

The 1st British Army (Haig) planned a 2-pronged attack. The northern group included both cyclists and cavalry, intended to exploit the hoped-for break-out. 2nd battalion Royal Sussex were in the southern group, alongside Indian troops.

The attack, originally planned for 8 May, was postponed by the French for 24 hours. By the time the decision came down from General Haig, our first wave, including the Royal Sussex, had already moved into the front line. They had an anxious wait!

The sun rose at 4.06 am on the 9 May. At 5 am, the attack was preceded by a 40 minute bombardment by 600 artillery weapons. The majority of the shells were shrapnel, intended to hit troops in the open, but ineffective in cutting wire, or disturbing trenches. Fewer than 8% were high explosive. Many of the guns had worn barrels, and could not be laid accurately, shells often falling short. As the Germans were quick to spot, there were many unexploded shells (‘duds’). One German regiment was to report ‘duds’ of apparently American manufacture, filled not with high explosive, but with sawdust!

At 5.40, the barrage lifted, and our troops rose from their trenches. They were met by a hail of machine-gun fire. 2 men in each platoon of the Royal Sussex carried a wooden bridge, to assist troops across the stream that ran through ‘no man’s land’. Those that reached the German wire found it uncut, and were mown down, or forced to lie down. The Royal Sussex were ‘virtually annihilated’, losing 551 casualties.

The attack having failed, a second attack was ordered. At 3.57pm the Black Watch went forward behind their bagpipes. Other troops, intended to attack, were delayed by the dead and wounded in the British approach trenches. Some 50 of the Black Watch did reach the German parapet, but were later killed. Corporal John Ripley, the first to get there, was awarded the VC.

The order to retire was given during the night. The Germans counter-attacked at

2.30 am on 10 May.

General Haig met the Corps commanders later that day, with the intention of ordering a further attack. The Corps commanders emphasised that the wire was still largely in place, and that there were no more shells for the artillery. Attack was abandoned.

(Sir John French was soon to receive an order from the War Office to give up 20,000 shells, 20% of his total reserve, for use in Gallipoli).

Thus ended the Battle of Aubers Ridge, with nearly 12,000 officers and men as casualties.

Sir John French, in his report, blamed the failure on the lack of high explosive shells. He passed this conclusion on to the Military correspondent of the Times newspaper, and sent 2 officers to London to brief the Conservative leader, Andrew Bonar Law, and the Liberal Cabinet minister, David Lloyd George. The Times article came out on 14 May. The Daily Mail took up the story. 2 days later (16 May), Admiral 'Jackie' Fisher, First Sea Lord, resigned over the Dardanelles campaign. Thus, on 19 May, the Prime Minister Herbert Asquith was forced to form a coalition with the Conservatives. Winston Churchill was replaced as First Lord of the Admiralty by Arthur Balfour, a former Conservative Prime Minister. Lloyd George was appointed to the new post of Minister of Munitions. The first women munition workers started work on 1 June. By December 1916, Lloyd George was Prime Minister.

We will remember them!

Hutchings, and over 13,400 others who died in 1914-1915, with no known grave, are remembered in the Le Touret (CWGC) memorial, some 7 km to the west of Aubers village.



Asquith



Lloyd-Goerge



Le Touret

History



Sam Sheppard, Submariner by Tony Cowin Historical Society

Chief Petty Officer Sam Sheppard, remembered on our War Memorial, died with all his shipmates aboard HM Submarine E 18, in a little-known naval campaign in the Baltic in 1916.

Sam was born in 1880 in St Neots. A bright lad, his first job was as the driver of a horse-drawn public omnibus. In 1898, Sam joined the Royal Navy as a stoker. His first ship was HMS DUKE OF WELLINGTON, 131 guns (Trafalgar style). Here Sam learnt to sling his hammock, and salute. Sam did his basic engineering training in HMS ALEXANDRA, a more modern vessel, starting with shovelling coal, in the bunkers and at the boiler furnace door. Once qualified, Sam moved to destroyers, first at Chatham, based on the depot ship HMS LEANDER, and then out to Malta.

In 1905 Sam volunteered for the Submarine service (which was formed in 1901). He joined the submarine depot ship HMS THAMES at Harwich, starting his training in one of the first, Holland-class boats. No more stoking! The Holland, and the subsequent A, B and C classes had petrol engines for use on the surface. Later boats used Diesels. Sam did well, soon rated Leading Stoker. Sam went back to General Service in 1910 (as was the custom). As a Petty Officer Stoker he joined the battleship HMS SWIFTSURE (11,800 tons).

At the start of the Great War, Sam, now a newly-promoted Chief Petty Officer Stoker, came back to HMS DOLPHIN (Gosport) to learn about the new E-class boats (640 tons, 5 torpedo tubes), before (June 1915) joining the depot ship HMS MAIDSTONE at Harwich, for HM Submarine E 18. As Chief Stoker, Sam was the Engineer Officer of this (then) very modern submarine! The Commanding Officer was Lieutenant Commander Robert Halahan, the First Lieutenant Walter Landale (grandfather of the BBC reporter). There was only one other officer, Sub Lieutenant Colson. They were bound for the Baltic.



E18 arriving Baltic 12th Sept 1914

Denmark and Sweden were neutral in this war. Germany had just widened the Kiel canal. German and Russian land forces were fighting on the southern shore around the Gulf of Riga. Ice limited movement of ships and submarines midwinter. Our main target was the flow of iron ore from Sweden to German ports. The then current Law required our submarines to surface, and view ship's papers, before sinking a merchant ship. Torpedoes

were reserved for German warships. Halahan received his orders from a Russian Commodore by wireless. He therefore embarked a Russian Liason officer, Lieutenant Vasily Polykarov, and 2 Russian telegraphists. E18 entered the Baltic on 12 September 1915, together with E13 and E19. E13 ran aground, and was lost. The others made for our Baltic base, Reval (now Tallinn in Estonia). Good work was done over the autumn. The winter was spent iced up in Reval.

E18 was able to sail again in April 1916, when she took the Russian Commodore to the Gulf of Riga, to witness a bombardment of German land forces by Russian destroyers. E18 sailed from Reval for the last time in May 1916.

On 26 May Halahan blew the bows off the new German destroyer V100 with a torpedo. The Germans reported him off Memel on 28 May. He failed to return from patrol.

In October 2009, the Swedish research vessel Triad located E18 off the island of Hiiumaa, at the north end of the Gulf of Riga. Divers confirmed that hull damage was compatible with a moored mine explosion amidships.

Sam is remembered on our memorial. Sam and his shipmates are remembered on the naval memorial at Southsea, and the memorial in the Submarine Museum. All are remembered, including the 3 Russian men, in the Church of the Holy Spirit in Tallinn, and by the E18 Families Group, run by a descendant of Robert Halahan.



E18 deck hatch 2009 off Hiiumaa

History

Frank and the Tanks

by Tony Cowin – Historical Society

Frank Weeks, whose name you will find on our War Memorial, fought and died in the first battle ever where tanks were used successfully, at Cambrai, in France, in 1917.

Frank was borne in Havant. He volunteered to join the army in response to General Kitchener's call. He signed up in Portsmouth, but was sent to the Gloucestershire Regiment (the Glorious Glosters). Frank's battalion, the 2/6th (Territorial) infantry battalion, trained on Salisbury Plain, and went to France on 24 May 1916.

Fromelles.

Here, as part of the 61st Division, they took part in the battle of Fromelles (19-20 July 1916), together with the 5th Australian Division. Preparations for the attack were rushed, both divisions lacked experience in trench warfare, and the German defence outnumbered them 2:1. Attacking on a 2-mile front, they fought over much the same ground as another villager, Edward Hutchings, whose death at Aubers Ridge in 1915 I have already described.

In this one attack, the Australians lost 5,533 men killed and wounded. Frank's Division lost 1,547 men, and thereafter was not employed in an attacking role.

The Somme.

Fromelles was fought in support of our major action on the Somme (1 July-18 November 1916). The first tanks were used here, from September 1916. Only 49 Mark I tanks were available. Useful lessons were learnt, but tank numbers were too few to significantly affect the battle.

Cambrai.

General Haig was persuaded by the reports from the Somme that the tank did offer a solution to the stalemate of the trenches. He invited General Byng to prepare a plan for a major raid, incorporating large numbers of the Mark IV tank then under development.

Byng got together with General Sir Hugh Ellis, commanding the Tank Corps, and Major J F C Fuller, the Tank Corps' chief-of-staff (Fuller, later Major General, was quick to grasp the capabilities and limitations of the early tanks). They agreed - Any preliminary bombardment should be kept short, to avoid damage to the 'going' for the tanks.



The supporting infantry should keep close behind the tanks. The tanks would crush barbed wire barriers. The infantry would walk through following the imprint of the tank tracks.

To aid crossing enemy trenches, each tank would carry a large bundle (fascine) of firewood, to be dropped in the trench.

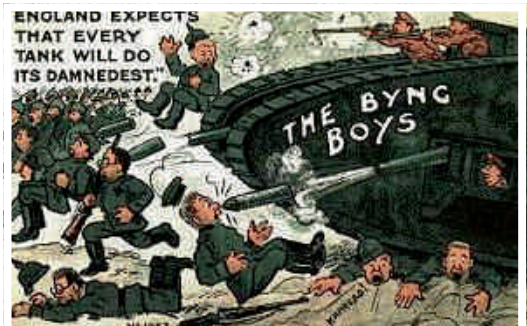
The attack would be against the major road junction of Cambrai, some 8 miles behind the front line. The attack would be on a front 6 miles wide.

Overall, General Byng brought together 6 infantry divisions (including Frank Weeks' 61st), 5 cavalry divisions, 474 tanks (including fighting tanks, gun carriers, supply tanks, and a few wireless tanks), over 1,000 field guns, and 14 squadrons of the Royal Flying Corps.

The attack was planned to be launched on 20 November 1917. Tanks were gathered well behind the lines, prepared for action, and brought forward by train. 36 trains were needed. From the railhead, tanks moved by night to holding areas. They moved to their launch position on the night before the attack.

Shortly before the tanks advanced, General Sir Hugh Ellis climbed into tank HILDA, in the centre of the front, waving the now-famous banner with colours of brown, red and green (Through mud and blood to the green fields beyond!)

The attack was a great success, with penetrations up to 5 miles on the first day. The wireless tanks reported progress to General Byng. When the news reached London, the Government ordered the church bells to be rung in celebration.



German resistance hardened. Frank's 61st division, initially in reserve, marched forward through the captured trenches to the green fields, to relieve their hard-pressed colleagues on the right of the line, just as the German counter-attack started (30 November).

Frank died whilst defending a very temporary trench line in the village of La Vacquerie, on 2 December 1917. On the following day the remains of his battalion were driven from the village. On 4 December a general order to withdraw was given. On 7 December withdrawal was complete, and snow fell.

We lost 44,207 men dead and wounded (including 6,000 POW), 103 field guns and 55 heavier guns. We also lost most of the tanks!

The Germans lost 45-53,000 dead and wounded (including 10,500 POW), 142 guns and 350 machine guns. There was no net gain or loss of territory.

Frank Weeks' name is amongst some 7,000 names recorded on the CWGC Cambrai memorial at Louverval, who have no known grave.

Interior design

Assessing the potential of your space

by Amelia Warren

Whatever the style and period of house you live in, your individual living areas will be divided by walls, ceilings and floors. These structural divisions are designed by an architect to create spaces that encompass the needs of those living there, providing at a basic level shelter and warmth and at an emotional level home and security. The way that they are organised gives each room a particular quality, scale and proportion, light levels, textures and a relationship with the areas surrounding it.



In order to understand how to get the most from each of your rooms, you need to evaluate the strengths and weaknesses that each space offers. To do this simply walk in and looking beyond the existing decoration and furnishing treatment, calmly assess what you see. Look at the dimensions of the room including the height, size and position of the windows, where the light is coming from and consider the use of the room. Note any elements that you need to work around, such as fireplaces, historical features and dominant furnishings that are essential to the room, such as a sofa, maybe a bed, or a desk and shelving.

Look at the room's focal points as they are now and decide what isn't working well in the current use of space and why this might be. An awareness of these fundamental issues will give you the ammunition to creatively rethink how to use a space.

I am always available for any help or advice and can be contacted on 02392 413532.

GREENING



Rowlands Castle

Coming Soon!



Sales | Repairs | Service | Parts

SOUTHERN MOWER SERVICES

New and used lawn mowers, strimmers, hedge trimmers, chain saws, ride on mowers, leaf blowers and more

Our highest priority is service to our customers



HAYTER

STIHL

Tanaka

FGM
Claymore

Husqvarna

Unit 4 Hillside Industrial Estate, London Road, Horndean, Hampshire PO8 0BL
Tel: 02392 592954 Email: info@southernmowerservices.co.uk
www.southernmowerservices.co.uk

LK Family Law



Divorce, Mediation and Family Law Specialists

Making separation manageable.

We are compassionate, professional and able to offer you a personal service to achieve the best possible outcome for you and your family.

Both Lisa and Kristy are trained mediators and collaborative lawyers so are able to offer non-court options. Your first consultation with us will always be at no charge – we believe that it is important that you have absolute confidence in our services before we work with you.

We are transparent about the costs you are likely to incur from the outset. There will be no hidden costs and we offer various payment plans.



Tel: 01243 373165 • Email: info@lkfamilylaw.co.uk • www.lkfamilylaw.co.uk

Fiscal House, Emsworth, Hampshire PO10 7JE

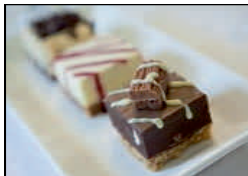


RKdia Catering Services specialise in outside catering for:

Christenings * Weddings * Funeral Receptions

Black Tie Dinners * Garden Parties * Dinner Parties

Mobile Bars * Hog Roasts * BBQs



Christmas Dinners for community and social groups brought to your venue, superb value for money, a quality meal at a modest price.



2015 bookings now being taken

Telephone: 023 9259 5158 Email: rkdia@radian.co.uk

RKdia Catering, Knighton Corner, Portsmouth Road, Horndean, PO8 9NN

www.rkdiacatering.co.uk



Richard C Arnold
Optometrists & Contact Lens Practitioners

Est 1890

...because eyesight is precious

At Richard C Arnolds, your eye health is always our top priority.

Our experienced and fully qualified staff take each eye examination seriously and spend up to half an hour ensuring your eyes are healthy before accurately measuring your prescription.

We are proud to use the latest techniques and technologies and always strive to provide a service which is second to none.

Extended Eye Examinations

We also offer an extended eye examination service during which additional tests are performed using some of the latest technology.

These examinations are highly recommended for patients with increased risk of problems due to medical or genetic reasons.

Advanced Technology

We recommend that all our clients have regular optomap examinations.

With the latest Daytona Optos we can quickly image a large area of your retina to check for problems in this delicate tissue.

If necessary we can use our OCT scanner to see inside the structure of the eye to immediately diagnose any problems, so that essential treatment can begin as soon as possible.

For peace of mind, phone now to book your next eye examination.



Daytona Optos
Advanced Digital Retinal Imager

because eye care matters

Petersfield: 01730 263302

Midhurst: 01730 814035

Cowplain: 02392 250641

www.rcarnold.co.uk

Ashley Electricians

Dalkieth, Woodmancote Lane, Woodmancote,
West Sussex PO10 8RD

- Local reliable electrician.
- All electrical work undertaken from sockets to rewires.
- Free visual safety checks & estimates.
- Fully insured & Part 'P' registered.
- Member of Trading Standards 'Buy with Confidence' Scheme.

Contact Ed Ashley on 01243 373195 or 07733 467536

ejashley@tiscali.co.uk

www.checkatrade.com/ashleyelectricians

Checkatrade.com
Where reputation matters



AMELIA WARREN
INTERIOR DESIGN

DESIGN

CURTAINS

BLINDS

UPHOLSTERY

www.ameliawarreninteriordesign.co.uk

ameliawarren@btinternet.com

Wellsworth Lane

Rowlands Castle

07753362842

Follow Me



**PROFESSIONAL PLUMBING
& HEATING SPECIALISTS**

A. A. BARRETT

**51 Hatchmore Road
Denmead
Waterlooville
PO7 6TE**

**Tel: 023 92258057
Mobile: 07802321269**

**Tel: 023 92258057
Mobile: 07802321269**



Bathrooms designed especially for you...

At Aqua Bathrooms, we offer a tailored design service, helping you create the perfect bathing space in your home.

From concept through to completion, our experienced and talented designers will work with you to ensure every aspect of your new bathroom meets your requirements. Our experienced installation team will ensure your bathroom is installed correctly with minimum fuss and disruption to your home.

Our friendly and knowledgeable team are highly skilled and experienced and have built up a strong reputation for quality and reliability. All our work is fully guaranteed so rest assured that entrusting your bathroom design and installation to Aqua, you will be in good hands.







We look forward to welcoming you from
Simon, Dave and the Aqua Team

Visit our Showroom
18 Elm Grove,
Hayling Island,
Hampshire
PO11 9EF

T: 02392 466007

E: enquiries@aqua-ltd.co.uk

W: www.aqua-ltd.co.uk

-  Fully fitted showroom
-  Free design service
-  Detailed quotation
-  In house fitters
-  Fully guaranteed
-  Peace of mind



Print. Perfected

As the South's largest commercial printer,
we handle all your print needs:

**Programmes • Brochures • Folders • Catalogues
Stationery • Flyers and much much more...**



**DELIVERIES ON TIME EVERY TIME.
QUALITY GUARANTEED.**



Follow us on Twitter for up to the minute news,
print tips and last minute offers.

Large enough to cope, small enough to care

T: 023 9233 4900
enquiries@bishops.co.uk
www.bishops.co.uk

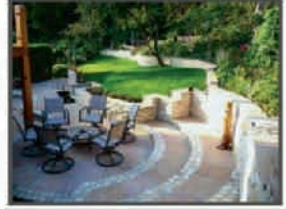


Print. Perfected



**Inspiring gardens....
from concept to completion**

Bespoke Designed Gardens • Planting



Extending your home into your garden

FREE CONSULTATION AND QUOTATION

Tel: 02392 413865 Mobile: 07767 867603

office@charlesworthoutside.co.uk www.charlesworthoutside.co.uk



HEATING • PLUMBING • BATHROOMS

I can help with all your boiler, heating, plumbing and bathroom needs. And I live right here in the village, so can call round at short notice.

**Here's my number.
Please keep it in a
safe place.**

07905 908143





DITCHAM
PARK SCHOOL



Where every child is known and valued

We are a co-educational, independent day school for children aged 4-16 years near Petersfield, Hampshire

- ▶ Caring family atmosphere
- ▶ Small classes and individual attention
- ▶ Impressive GCSE results
- ▶ Outstanding location with excellent facilities
- ▶ Wrap around care available before and after school

For further information, or to book an appointment for a tour with the Head Teacher, please call ☎ **01730 825659**
Email: admissions@ditchampark.com

fabulous flooring with a perfect fit!



visit our website
to find out more
waterloovillecarpets.co.uk

Service is the secret of satisfied customers and satisfied customers are the secret of our 47 year success.

- Fabulous Carpets from Greendale, Brintons and Ulster
- Crucial Trading/Alternative Flooring Specialist
- Fabulous Vinyl Tiles from Amtico, Karndean, Victoria & Vusta
- New Click only Vinyl Planks from Victoria
- Fabulous Quickstep Laminate Flooring
- Oak Floors – Engineered Planks and Solid Click
- Fabulous Bamboo, Cork and Sustainable Flooring
- 12 MONTHS INTEREST FREE CREDIT on all products



We promise you a flooring that fits your requirements, fits your budget and fits beautifully into your home. Please call in, anytime.

A pleasure to come home to.....

31 The Square, Petersfield, Hampshire Telephone: 01730 262223/267381 Fax: 01730 267394
email: sales@waterloovillecarpets.co.uk waterloovillecarpets.co.uk

Handyman

Household maintenance

Home Maintenance

Carpentry

Door Hanging

Repairs

Painting/Decorating

Fencing

Jet Washing

Gutter Cleaning

Cabinet Making

Shelving

*For all the jobs you can't or don't want to do
Call Alan on 07580 067190 or 023 9241 2797
for a free no obligation quotation
Email: alan@handyman66.com*



Portsmouth High School

An independent school for girls from Nursery through to Sixth Form delivering outstanding results...

Our school minibus collects pupils from the Rowlands Castle area each day and takes them right to the school door...



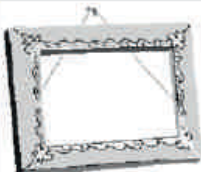
www.portsmouthhigh.co.uk

Open Doors events held throughout the year, visit our website to find out more.



Portsmouth
High School

023 9282 6714 admissions@por.gdst.net Kent Road, Southsea, PO5 3EQ
Part of the Girls' Day School Trust network of schools



Petersfield Framing Studios

Picture Framing by
Andy Parks, MA, G.C.F.

- ◆ Collection and Delivery Service in the Rowlands Castle area.
- ◆ Guild Commended Framer (G.C.F.) with 23 years experience.
- ◆ Over 400 different mouldings and 200 mount boards to choose from.
- ◆ Very competitive prices.
- ◆ Picture framing tuition also available.
- ◆ Tel: 01730 269926.
- ◆ Visit: www.petersfieldframing.co.uk

"We Collect and Deliver Your Picture Framing"

microsomma



IT Support for Home & Small Business

www.microsomma.com

Please see my website for local recommendations...

Reliable & Local

Available 7 Days

Qualified & Experienced

0845 0170772

07796 346526

david@microsomma.com



JIGSAW



NURSERY

Where play and learning fit together

ROWLANDS CASTLE ST JOHNS CEC PRIMARY SCHOOL

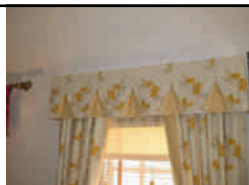
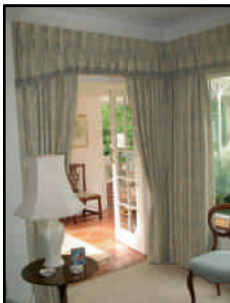
Whichers Gate Road, Rowlands Castle
Hampshire PO9 6BB

Monday to Fridays 8.30am ~ 4.30pm
For children aged 2-5 years

Early Years Foundation Stage curriculum
For a prospectus, or to arrange an informal chat, please contact:

Lorraine Bryant ~ Manager on 023 9241 2095

**"The experienced and enthusiastic staff are skilled at making learning fun".
Ofsted 2015**



Elizabeth Turner Soft Furnishings Ltd

Hand-made quality curtains, Roman blinds, cushion covers and other soft furnishings. We also supply curtain poles, tracks, tie backs & other curtain accessories, plus provide a fitting service.

01243 389939 / info@elizabethturner.co.uk
www.elizabethturner.co.uk / Find us on facebook!



Craniosacral Therapist Louise Toone RCST BCST

Have you thought about trying Craniosacral Therapy?

This mindful therapy can help people of all ages, from the very young to the very old. It helps with physical difficulties, such as recovery after injury and surgery.

Craniosacral Therapy helps relieve stress symptoms such as emotional over-whelm, headaches and insomnia. I am qualified to treat Post-Traumatic Stress Disorder. Treatments are gentle and relaxing, helping you find balance.

Craniosacral Therapy is so safe it is suitable for Pregnant Women, Mothers and Babies. It can aid recovery after birth and improve babies' feeding and sleeping patterns.

I offer convenient appointment times at my home in Rowlands Castle.

Find out more by visiting my website at www.gentletouchcst.com

Contact Louise on 02392 413278

Email: louise.toone@btinternet.com



S.Roberts Upholsterers

Professional upholstery.

Contract and domestic - any size work undertaken

We provide a free measuring and quotation service and you can find us on Checkatrade.com

Checkatrade.com

Call on **01243 377200**
for all your upholstery requirements

www.re-upholster.co.uk



Unit 10, Palmers Road Industrial Estate, Emsworth, Hants PO10 7DH

Burchett Decorators

- Domestic, Commercial & Insurance Work
- 22 Years Experience
- All Types of Decorating including Wallpapering, Coving & Carpentry
- Fully Insured
- Clean, Tidy & Friendly Service

Ring for **FREE** Estimate
or Just Helpful Advice

07866 691 984
023 9241 3548

Email: Burchett.davis@btinternet.com

Keith was friendly, reliable and worked exactly as he promised to, neat, tidy and very personable

Customer, Stedham, 2012

Checkatrade.com
Where reputation matters



Member for 8 years

Burchett Decorators, Finchdean, Nr. Rowlands Castle, Hampshire



BUILDING CONTRACTORS

COMMERCIAL, INDUSTRIAL and
MAJOR DOMESTIC WORKS

Joinery Mill, The Green, Rowlands Castle,
Hampshire. PO9 6BW

Tel 023 9241 2741
www.winnicott.co.uk

Established
1904

Fax 023 9241 2212
mail@winnicott.co.uk

homehardware

Not just paint!
WE COVER EVERYTHING!

- ✓ GREAT SAVINGS ON MANY RANGES
- ✓ FRIENDLY EXPERIENCED STAFF
- ✓ **OPEN SUNDAYS**

Austens
Petworth
Tel: 01798 342104

Alton
Tel: 01420 85115

Emsworth
Tel: 01243 376852

Billingshurst
Tel: 01403 782963

Romsey
Tel: 01794 512141

Midhurst
Tel: 01730 815979

Rowlands Castle
Tel: 02392 412332

Family Run

Dulux
PAINT MIXING CENTRES

www.rowlandshomehardware.co.uk

POST OFFICE **OPEN 7 DAYS A WEEK**

CHILDRENS LEARNING CENTRE

RATED OUTSTANDING BY OFSTED 2011

Member of; 4Children

125 New Brighton Road, Emsworth

EDUCATIONAL NURSERY AND DAY CARE SERVICES

OPEN 50 WEEKS A YEAR 8.00AM - 6.00PM

We offer full time and term time care for children from 0 – 5 years, hours and days to suit your requirements. Also we provide holiday activities for children 3 – 5, and an after school club

Telephone: 01243 372015 or email: childrenslc@btconnect.com



02392 412 606



info@stylestudio-rowlandscastle.co.uk

Your local Hair and Beauty Salon

Recommended by The Good Salon Guide, we're situated in the heart of Rowlands Castle.

Offering a professional portfolio of hair and beauty treatments by a team of experienced hairdressers and beauticians.

- Hair for ladies and gents
- Beauty
- Special packages
- Late appointments available by request

Contact us: 3 Links Lane, Rowlands Castle, Hampshire, PO9 6AD

Find us online: stylestudio-rowlandscastle.co.uk

GEORGE IDE LLP

solicitors



Legal Advice You Can Trust

George Ide LLP Solicitors has a well established and highly regarded private client department which deals with all aspects of Wills, Probate, Trusts, Court of Protection and Powers of Attorney.

We can advise you on:

- The preparation of a Will
- Obtaining Probate
- Executor Responsibilities
- Investment Advice
- Post Death Variations
- Inheritance Tax Planning
- Trusts
- Lasting Powers of Attorney
- Court of Protection Issues

The breadth and depth of the expertise of our team is such that we offer private individuals and families a tailor made personal service of the highest quality.

We provide specialist advice to manage the personal affairs of individuals at every stage of their life. Our experienced Solicitors have a sound understanding of the issues, which can affect your personal wealth and family relationships and will take all of the necessary steps to protect your interests every step of the way.

Contact Ian Oliver on: 01243 812421
ian.oliver@georgeide.co.uk
www.georgeide.co.uk

On your side

GEORGE IDE LLP
solicitors

Martin Steels Ltd

Optometrist & Contact Lens Practitioner

The LATEST in Eyewear Technology & Style

OCT technology for sight protection

With a quick and simple OCT test we can examine the internal structure of your eye and can detect problems before they start affecting or damaging your eyesight

In many cases, the earlier the treatment the less likelihood of permanent eyesight impairment

Ask about OCT when you book your next eye test



High quality & high fashion frames

We always stock a wide selection of the latest fashions and innovations
Whatever your look, you'll find a match at Martin Steels

RADLEY
LONDON

Silhouette

AUSTIN REED

Chloé

PORSCHE DESIGN

R
RODENSTOCK

MICHAEL KORS

Maui Jim

ck
Calvin Klein

LACOSTE

SEIKO



Saturdays: 9am - 1:00pm
Weekdays: 9am - 5:30pm

4, The Old Flour Mill,
Queen Street, Emsworth

martinsteels.com
01243 375141

Happy and **successful**



Nursery | Infants | Juniors | Senior | Sixth Form

Our children love to learn;
see just how much at our
Open Morning on
Saturday 26 September 2015,
from 9:30am

To find out more call

023 9236 0036 | www.pgs.org.uk



**THE
PORTSMOUTH
GRAMMAR
SCHOOL**