

# Rowlands Castle Association



Summer 2013

Village Magazine

[www.rowlandscastle.com](http://www.rowlandscastle.com)



# Chantry House Oak

Oak Furniture Manufacturers & Retailers



Our Workshop Showroom is open to the Public Mon - Sat 9 - 5pm

[www.chantryhouseoak.co.uk](http://www.chantryhouseoak.co.uk)



Oakham Farm, Church Lane, Oving, W Sussex, PO20 2BT  
01243 776811



## Village Magazine Spring 2013

RCA Chair's Report .....	4-5
Summer is finally here .....	6
Village Fair.....	7-11
Parish Hall News .....	12
Finchdean Steam Fair .....	13
Annual Plant Sale .....	14
A Craft Village .....	15-16
Craft Shop .....	17
University of the Third Age.....	18-19
Beekeeping .....	20-21
Good Neighbours .....	22-23
TLC .....	24
St John's School .....	25-27
Women's Institute.....	28-29
Girlguiding.....	30
Rowlands Castle Golf Club .....	31-32
Cricket Club .....	33-34
St John's Parish Church .....	35-37
Domestic heating news .....	38
County Council News .....	39-40
Consituency News .....	41-42
Parish Council News .....	43-45
Keydell Inquiry.....	46
May Day Picnic .....	47

The Village Magazine is published three times a year by the RCA. The aims of the RCA are to act as a channel of communication for the Village, to conserve the character of the Village and to enhance the life of the Village.

**Editor: Kevin Connell , 19 Mallard Road, Rowlands Castle, PO9 6HN**  
**Tel: 02392 413857      email: [editor@rowlandscastle.com](mailto:editor@rowlandscastle.com)**

*Cover picture: Pat Carter*

# Rowlands Castle Association

## Message from the chairman of the RCA

by Richard Milton, Chair, RCA

First, I want to congratulate Rowlands Castle Parish Council, ably assisted by Counsellor Marge Harvey and a number of other Villagers, for the successful rejection of plans to build a retail park in Wichers Gate Road. This action shows that the urbanisation of a rural village like ours is not inevitable and will, I hope, encourage resistance to similar future plans that are out of keeping with the character of Rowlands Castle. This issue of the Magazine contains articles about the inquiry that was held into the plan and the part played by the Parish Council.

I'm pleased to say that the RCA Committee is now at full strength, having recently welcomed our latest member Ann Clayton Jones. As well as representing the interests of Finchdean where she lives, Ann is also spearheading an exciting new initiative to bring regular cinema to the Parish Hall at affordable prices. The details are yet to be finalised, but we hope to be mounting regular film events early in the New Year.

A second exciting initiative is that undertaken by the Magazine's Editor, Kevin Connell, in starting up a University of the Third Age branch in Rowlands Castle. Again, the details have yet to be worked out, but we expect to be making further announcements later in the year. Kevin has written about U3A on page 18 .

This edition of the Magazine is accompanied by the 2013 Village Directory, and I want to pay tribute to Ken Anthony who has once more undertaken the task of compiling and updating this important Village asset. There is also a donations envelope with this edition and if you would like to contribute to the work of the RCA please make a donation (we suggest £2) and return the envelope to Rowlands Home Hardware at 11, The Green.

There are three important dates for your diary for the remainder of 2013. First, the RCA will again be holding its successful Quiz Night at the Parish Hall, Links Lane, on Saturday October 12th. Second, the RCA's Bonfire Night celebrations and fireworks display will be held this year on Saturday November 9th in the Recreation Ground, Links Lane. And third, the RCA Christmas Children's Party will be held at St John's Church Hall on Sunday 15th December.



*New RCA recruit  
Ann Clayton*

# Rowlands Castle Association

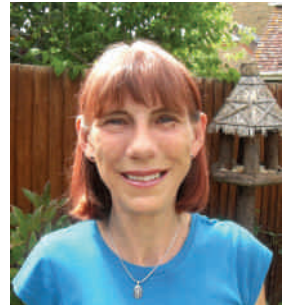
## Your RCA Committee



Richard Milton (Chair)  
9241 3292  
chair@rowlandscastle.com



Kevin Connell (Editor)  
9241 3857  
editor@rowlandscastle.com



Sue Connell (Secretary)  
9241 3857  
secretary@rowlandscastle.com



Sharon Broom (Treasurer)  
9241 3592



Martha Dombey  
9241 0030



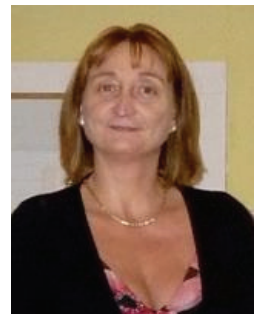
Fiona Charlesworth  
9241 3865



Mike Winn  
9241 2704



Gillian Lovegrove (Webmaster)  
9241 2426  
webmaster@rowlandscastle.com



Sue Morrison  
9241 3292

### Summer is finally here

by Kevin Connell

**I**t seemed like summer would never come. Crops are several weeks behind schedule but finally summer is here in style. How long before we are looking at hosepipe bans?

The big news of recent weeks has been the result of the Keydell appeal. The Inquiry was a fascinating process. St John's Hall was so packed at the start that an overflow room had to be brought into service. However the audience thinned out after a couple of hours of glacially slow legal discussion. From the outset it seemed that Keydell's arguments were not compelling. The experts from the council performed exceptionally well and at the end of the first day it was clear that Keydell needed to up their game.

On the second day Keydell's environmental expert took the stand. Much of the argument on the first day had centred around the time it would take for the site screening to take effect. She was asked what she thought the impact on the landscape would be at year zero. To most people's astonishment she replied that there would be no impact. Given the emphasis that the other side had placed on the sheer size of the development this was a bit of an own goal. The inspector himself had questioned the council why a development the size of a Retail Park is treated under the planning process in the same way as a back garden nursery.

The great thing about an Inquiry is that anyone has a right to be heard. Several independent speakers against the proposal made telling contributions. It had been argued that there would be no traffic impact on the village and the initial application was not rejected on that issue. However individuals and the Parish Council were able to demonstrate that the traffic impact, particularly that of heavy lorries, would be detrimental to the village and this strengthened the case against Keydell.

Despite the apparent weakness of the Keydell case the inexperienced observer is unaware of what the Inspector is looking for and it was a tense wait for the Inspector's report. Of course not everyone in the village was happy when the report found in favour of the council but the vast majority breathed a sigh of relief.

## Fair weather draws crowds to Village Fair by Kevin Connell

The summer finally arrived in Rowlands Castle and large crowds took advantage of the fine weather to attend the Village Fair. There were the usual fair-ground rides, face painting and games for the children. The stalls were all very busy making it a successful day for the many charities taking part. There were so many thirsts to quench that the Pimm's soon ran out. For those who still had some energy left there was the traditional disco in the evening featuring music from the 'Motown' era. A great time was had by all.



*Photos: Graham Croker*

# Village Fair





# Village Fair



*Photos: Graham Croker*

# Village Fair



*Photos: Graham Croker*

# Village Fair



*Photos: Sue Connell*

# Parish Hall News

## Refurbishment gathers pace

Kath Molloy

Grants from EHDC; Sam Darragh (county councillor); WI; Motor Cycle Club; R.V.S.; Barbara Openshaw's nephew; Firm Oak Foundation plus a substantial contribution from the Oaklands building contract has given the Parish Hall the chance for a full makeover, just in time for its 100th anniversary in 2014. The hall was opened in April 1914 so we hope to hold some sort of celebration, probably in June 2014.

The hall will be closed from 16th August until 1st September 2013. Apologies for those excluded who would normally book during that time. When you return you will find a new kitchen, new chairs, more fold up tables and a renewed shiny floor in the large hall.

My thanks to all the regular hall users for their continuing support and a very big thankyou to Jonathan and Shirley Law for running a very efficient office in my hour of need.

Be aware that with all the new equipment there will be a few new rules. I will spend even more time on the premises to ensure that they are adhered to.

It is inevitable that we won't please everyone, but just remember that the committee are all volunteers and that the old saying of 'overworked and underpaid' is definitely true ....at least it is for me.



# Local Events

## Finchdean steam fair



*Photos: Fiona Charlesworth*

# Local Events

## Annual plant sale in village hall



*Photos: Sue Connell*

### A Crafty Village by Martha Dombey

With the winter months long past you would think crafts would take a back seat and we would be out doors but not so, we have the regular Craft Fair at the Parish Hall, the new shop Handmade Studios and we have the Village Fair.

The Craft Fair run by **Sylvia Tomkinson** is a regular event in our village. Sylvia has been running this since June 2007 when she and a few like minded hobbyists decided to sell their wares. There are on average 25 stalls in both of the Parish Halls on the second Saturday of the month from April to December with a break for August. Admission is free and there are refreshments including Freda's scones which are delicious and tempt many in to peruse the plethora of beautiful crafts.

The variety of skills is truly breathtaking with, Pottery, Woodwork, Carving, Jewellery, Silver Smithing, Textiles, Knitted goods, Garden Ornaments and many more. The one criteria that Sylvia asks is that it's all your own design work and handicraft. Stall holders come and go and some people move on to run their own small business using Sylvia's craft fair as a starting point to test the market.

**Sylvia** was enamoured by making and selling jewellery for many years before she came to Rowlands Castle in 1977. She started with the help of Mary Coomer, Mary Hone, June Prince and Kay Steels. They ran a small craft shop in a corner of Winnicotts and displayed Sylvia's beautiful silver jewellery. At the same



*Photos: Sue Connell*



# Craft Fair

time she joined Emsworth Craft Market as well as looking after a family with two small children. Then she had a break to work full time but eventually returned to her passion for Silver Smithing when clearing her loft one day and opening up her box of tools which re-awakened her passion.



Sylvia took part in workshops to learn anticlastic raising, etching and various other techniques to widen her skills and she now belongs to an area group of the national organisation, The Association for Contemporary Jewellery, from whom she has gained the knowledge she displays at the Craft Fair.

Finally Sylvia has now reached a decision on a topic that has been on her mind for some time. She is going to retire from running the craft market at the end of this year 2013. Sylvia would love it to continue, and in fact would still love to exhibit there, but she feels that after six years it needs someone new in the driving seat with the extra enthusiasm to take it forward. If anyone, craft maker or not, feels they would like a village project to take under their wing please get in touch. This could be a joint venture to share. There are five more markets this year during which any interested party could discover what is involved.



The Craft Fairs are JULY 13, SEPT 14, OCT 12<sup>TH</sup>, NOV 9<sup>TH</sup>, DEC 14<sup>th</sup> 2013

You can contact Sylvia Tomkinson on 023 9241 2980.



### New craft shop opens in Rowlands Castle

by Mike Wallis

Nestled in the centre of Rowlands Castle, next to the excellent Village Coffee shop, is a delightful Art and Craft shop called Handmade Studios. Linda Kirkbride MA, the owner, says “I have always loved textile work and while much of the stock is textile based we also have wonderful jewellery, prints, artist-made greeting cards, artists’ materials, art books and gifts. One of our specialities is gorgeous wool and yarns for all who love to knit or crochet and we have a large stock across the price range including patterns and needles. Now with four display rooms, many of our visitors say it’s a lovely place to browse around and very much bigger than it looks from the outside. (Some have called it an art and craft ‘Tardis’!) Linda also provides craft workshops and ‘drop in’ sessions for “those who love to chat and have fun while perfecting their skills”. Linda has her own textile studio there as does Beverley Harris, who specialises in felt.

However, opening was a challenge! The plan had been to open on the 1<sup>st</sup> December 2012 but just 10 days before that date, Linda was collecting art work from Brighton (in fact the gorgeous poppy lamps if you have seen them) when she tripped over a raised boardwalk and broke her wrist in two places! After much pain and plaster, and with the help of her partner Mike, Linda managed to get the shop up and running by 11<sup>th</sup> December but still suffers pain even now. The great Picasso said “all great art is born out of pain!” but we are not sure that is what he had in mind.

Interestingly, Linda was able to populate the shop largely using social networking. From her days as an adult student at what is now The University of Chichester, her Masters at Portsmouth University and her ownership of The Art House at Westbourne, Linda, a keen Facebook and Twitter enthusiast, gained a large following in the art world. So when she announced that she was planning to open Handmade Studios on social media, her artist contacts immediately formed a queue! In fact you can follow the progress of Handmade Studios on Facebook by searching for “thehandmadestudios”.

You can find Handmade Studios at 4 The Green, Rowlands Castle, PO9 6BN. Open every day 10am to 5pm except Monday. Call 02392 412901 or visit [www.handmadestudios.org](http://www.handmadestudios.org), email [info@handmadestudios.org](mailto:info@handmadestudios.org)

# University of the Third Age

## U3A coming to Rowlands Castle

by Kevin Connell

**W**hat is the University of the Third Age? U3A is a self-help organisation for people no longer in full time employment providing educational, creative and leisure opportunities in a friendly environment. It consists of local U3As all over the UK, which are charities in their own right and are run entirely by volunteers. Local U3As are learning cooperatives which draw upon the knowledge, experience and skills of their own members to organise and provide interest groups in accordance with the wishes of the membership. The teachers learn and the learners teach. Between them U3As offer the chance to study over 300 different subjects in such fields as art, languages, music, history, life sciences, philosophy, computing, crafts, photography and walking. A typical U3A has about 250 members but could be as small as 12 and as large as 2000.

There are a number of U3As in the vicinity, two in Emsworth, and one in Havant. So what is the thinking behind bringing the U3A to the village? Rowlands Castle is a culturally active village which already supports a range of successful clubs such as WI, Art, Photography, Gardening and History. A number of villagers already attend U3A meetings elsewhere, some travelling considerable distances. It was felt by the RCA committee that many villagers would appreciate the opportunity to take part in U3A activities within walking distance of their homes.

The RCA can't run U3A as one of its activities. However it can fund and organise the initial setup meetings. These will be overseen by the area U3A organiser, Pam Jones. The U3A will need its own committee consisting of the usual chairman, secretary, treasurer and ordinary members. The committee will then seek ideas for groups from interested parties. Membership of U3A usually costs no more than £20 a year, a small price to pay for the range of activities that a typical U3A runs.

# University of the Third Age

Some activities may involve some extra costs. For example Yateley U3A run a 'Photoshop' course which requires a licence for the software. However they have negotiated a special rate making the software more affordable.

All U3As are different and the scope of groups is only limited by the imagination of the members. Typically there will be literary, computer, language, games, history and science groups. Petersfield has walking and Tai Chi groups. Basingstoke has singing for pleasure, ballroom dancing and flower arranging. Havant has 'use your bus pass' and wine appreciation.

If you are interested in U3A, have an idea for a group or would be interested in serving on the committee come along to the start up meeting. This will be scheduled shortly. Information about time and place will appear on Grapevine and on notices on village notice boards.

In the meantime more information can be found about U3A by following this link:

<http://www.u3a.org.uk/home.html>

Rowlands Castle



# Beekeeping

## Beekeeping in Rowlands Castle

by Mike Cotton

**H**ave you considered the possibilities of keeping bees in your garden and are not sure how to get started. This editorial should help you on your first step.

### **Starting out**

Basic information: obtaining hives and bees; siting of hives; size of garden; neighbours, pets, children. One step at a time. The end result being able to collect your own honey, makes it all worthwhile.

### **Plight of the Honey Bee**

The recent publicity in the media regarding the worldwide problems facing the honey bee, even though other bees are under threat, has highlighted peoples awareness of this fascinating and extremely interesting activity. The more people who take up beekeeping and who are well informed will go a long way to preserving this fascinating industrious insect. Most of the food we eat is directly attributable to the Bee's pollinating activity.



### **New Bee**

First step, join a local Beekeeping association or attend some meetings as a guest, to dip your toe in the honey. If you feel this would appeal to you then the next step would be a short but informative course on Bee Basics, carried out by an experienced beekeeper from the association. This gives a good grounding and either firms up your interest and leads you into the next stage of actually obtaining your first bee hive with its occupants or you may feel its not for you. The association can guide you through this as its not simply buying a hive and putting it in the garden and letting them get on with it. All associations have experienced members who can mentor you during this period and give continuous support. A useful book which gives lots of information, and in addition is an interesting read, is 'The Collins Beekeepers Bible' approx £18.00 or less from Amazon.com. I highly recommend it as a starter book.

### **Information and Guidance**

Portsmouth and District Beekeeping Association (PDBKA) had a stand at the Village Fair this year. Beekeepers were there to answer any questions, and show equipment including hives and samples of bee products, honey, wax and candles.

# Beekeeping

We had an observation hive on display to enable the public to view the bees in a secure situation going about their business

If you would like some more information on beekeeping. contact **Mike Cotton Chairman PDBKA on 02392 412758.** Leaflets are available giving details of the association or go to our Web Site.

[www.portsmouthbeekeepers.co.uk](http://www.portsmouthbeekeepers.co.uk)

Looking forward to hearing from you

Regards

Mike

Our Membership Secretary Rita Perry 5 Salterns Lane Hayling Island PO11 9PH

Tel 02392 468609 for membership details and application forms



*Swarm entering hive*

# Rowlands Castle Good Neighbours



## AGM

By Ian Hewitt

The Good Neighbours AGM was held on 25<sup>th</sup> April. At present we have 43 volunteers including 9 co-ordinators who drove 2,744 miles in the year for 288 requests for help for about 40 clients, 12 of whom were new in the year. 70% of the lifts were health related – Hospital, GP, Dentist etc, 13% for shopping and 17% for social visits.

At the AGM we said farewell to **Owen Pike** after 10 years as a volunteer and 8 as Secretary. **Lyn Elliott** is also retiring from the committee and has been a member since Good Neighbours started in the village 24 years ago. Lyn has been treasurer for about half that time. A very big THANK YOU to Owen and Lyn for all the work they have done on behalf of Good Neighbours and the community. Lyn continues as a co-ordinator and volunteer. **Christine Funnell** will take over as Secretary.

During the year we contributed £400 to the Parish Hall to contribute towards the cost of refurbishing the hall's patio doors.

At the AGM we were grateful for the support of John Pickering (Parish Council Chairman), Rona Musker (WI), Claire Stanley, (Women's Fellowship) & Vi Anthony (WRVS Lunch Club) as well as members from Clanfield & Horndean Voluntary Care groups. Our guest speaker, Mrs Debbie Sutton, was a nutritionist with the National Health Service who gave a most stimulating talk about balanced diets.

On 8<sup>th</sup> May volunteers and clients enjoyed a coffee morning at the Church on the Green. Some 25 members enjoyed the church's hospitality as we joined one of their regular coffee mornings giving the opportunity for volunteers and clients to meet. We will hold another in the Autumn. The Church on the Green is open for refreshments **every** Tuesday and Wednesday morning from 10.30 – 12 noon. All are welcome.

We are always interested in volunteers. If you could spare the occasional hour or two per month to transport clients please contact the help line.

And finally – if you know of anyone who may need help - for example, with:

# Rowlands Castle Good Neighbours

Transport to hospital, library, or shopping?  
Collecting a prescription from the doctors?  
Transport to a club or social event?  
Some company for a chat or to play a game?  
Walking a pet, or any other neighbourly activity?

**then please remind them of our help line - 0845 519 6641**

and ask them to give at least 48 hours notice (if possible) of their need – particularly at weekends.



*Good Neighbours enjoying one of their occasional get-togethers at a coffee morning at the Church on the Green.*

## We want to hear from you.



Do you have something to say? The RCA Village Magazine belongs to the whole Village., and serves as a channel of communication between villagers. If you have a point of view, write a letter and we'll publish it.

Simply write to Editor, RCA Village Magazine, 19 Mallard Road, Rowlands Castle, Hampshire PO9 6HN. Email to [editor@rowlandscastle.com](mailto:editor@rowlandscastle.com)

## Give a little TLC or tell us if you need some Jenny Croucher

**T**LC (Hospice Services at Home TLC) – is a small local Charity with a big heart, caring for people in the community.

TLC stands for Tending, Listening and Comforting providing volunteers to support and befriend and help adults, their carers and families in Hampshire, Surrey and West Sussex. It also provides free complementary therapies for clients and carers.

Volunteers are given full training and they give up to three hours a week to provide emotional and practical support, giving ‘time out’ for carers who are looking after people with Cancer, Alzheimer’s, Dementia, Parkinson’s, MS, Stroke and other life-limiting conditions such as neurological problems and the frail and elderly. TLC also supports and befriends those who have life-limiting conditions and are house bound. Volunteers and clients are matched up according to their needs and suitability.

At present TLC Volunteers cover areas such as Havant, Petersfield, Alton, Liphook, Farnham, Hindhead, Haslemere, Bordon, and environs. We would like to help people in your area but to do so, TLC is always looking for more volunteers to join the Training Programme. It can be taking someone for a walk or to simply just having a cup of tea and a chat. Sometimes it is so important for a carer to have some breathing space and for the person they are caring for, to be able to chat to someone different, as so many people only see their nearest relatives who are caring for them. Volunteers receive continuous support from the TLC Team, regular get-togethers to meet other volunteers and are offered on-going training if appropriate (ie. Workshops on Dementia and Alzheimer’s)

Additionally, TLC fund raises to provide FREE complementary therapies by their team of qualified therapists, to help both clients and carers. It is surprising how some gentle aromatherapy massage or reflexology can de-stress and in some cases, reduce the need for strong medication.

For information on the Charity and the services it offers – visit our website:

[www.hospiceservices.org.uk](http://www.hospiceservices.org.uk), or if you want to become a volunteer, or if you know of anyone who might need TLC’s help, or indeed like to help raise funds; contact [volunteer@hospiceservices.org.uk](mailto:volunteer@hospiceservices.org.uk) or telephone 01420 477231 and speak to the TLC Team.



*Photo: Volunteers with Jan Allen (Volunteer Service Manager) centre, at a recent Talk on Alzheimer’s*



## St John's School Summer Fair

Kevin Connell

The annual fair held by St John's school took place on Saturday 15th June. There were the usual wide range of stalls, tombolas, face painting, craft, bric a brac, toys, games of skill, hot dogs and refreshments. There were bargains to be had and the 50p DVDs disappeared very quickly. The toy and children's book stall was doing brisk business. The school band kept everyone entertained and visitors to the fair were able to see the wonderful new woodland walk that the staff and parents have created in the grounds of the school. The 'hot dogs' were up to the usual high standard and for those who were still hungry there were cakes and ice creams.

The annual fair is always worth a visit and I recommend that if you haven't been before you give it a go next year.



*Photos: Richard Milton*

# St John's School

## Outdoor Learning Project makes outstanding progress

By Sharon Armstrong

St John's CEC Primary School has been working hard to improve its outdoor space and develop structured outdoor learning opportunities for its pupils and the wider community. Outdoor learning for children is extremely important. It improves educational outcomes and overall health and wellbeing.

The children brainstormed ideas and worked with professionals to redesign its grounds. Imagine an outdoor area for children that includes a traversing wall, pond, sculptures and outdoor art, allotments, a worship and reflection area, a play stage, a learning hut, a woodland walk and much, much more.

With the help of parents, school governors, the PTA, staff, pupils and the generosity of businesses we have transformed part of the school field into an educational woodland walk and a story-telling area. Wood chipped pathways take the children on a journey of discovery, learning about their natural habitat.



*Photo: Peter Langdon*

Outstanding fundraising efforts and partnership working from the school governors, staff and the PTA means that the second phase of our outdoor learning project will be completed over the summer holidays. When the children return in September they will benefit from a bamboo garden, worship and reflection area and a cherry grove area.

We would like to express our thanks to Stansted House and Keyline for donating woodchip for our woodland walk pathways and Southern Electric for volunteering personnel and equipment to dig out our pathways. We would also like to thank Cllr Marge Harvey for her support and financial contribution towards our cherry grove. St John's Church has made a significant financial contribution towards the worship area. Finally, a big thank-you to Brian Aherne from 'Around to It'.

We are very excited about the next phase of our outdoor learning project

# St John's School

and are making fantastic progress to establish a decorated traversing wall and a space for the children to create bigger art projects.

We would appreciate any support you can provide, whether that is your time, materials, skills or donations - get in touch! Are you a local business? We are also keen to hear from local businesses that are interested in working with St John's CEC Primary School.

For more information please email [outdoorlearningproject@stjohnspta.com](mailto:outdoorlearningproject@stjohnspta.com) or telephone Sharon on 07726 424300.



*Photo: Peter Langdon*



*Photos: Kevin Connell*

# Rowlands Castle Women's Institute

## **An action packed year so far!**

**by Rona Musker, President, Women's Institute**

**T**he Hampshire WI Federation now runs its year from June to May and our "new year" started with 100 members, including several younger people, including Jackie Oliver who has joined our Committee. Jackie ran our very successful Jumble Sale in March for the first time and seems to want to do more which is wonderful.

Following on our donation of £1200 to St John's School in March, around 30 of us spent an inspiring afternoon at the school in April where we were given a delicious tea in the company of many of the pupils and then shown round the school and the areas that are being developed for outdoor learning. Most of us wished that our schooldays had been so stimulating!

As I write this, we are all preparing for our stall at the Village Fair which will be brimming with everything you would expect to find at a WI stall. You won't miss us as we have acquired a banner which will be on prominent display beside our area!

Since the Spring we have enjoyed many interesting and fun events. In May more than 30 members attended a very inspiring talk by Angela Park entitled "Memory and Me". Angela is a psychologist with a practice in Petersfield where she runs group and individual sessions on how to help yourself keep the memory alert. We all hoped that her advice was going to work!

Our Craft group had a lovely visit to Grayshott Pottery where we were shown round the whole process of turning clay into beautiful pieces of china. It also has a magnificent shop selling all sorts of wares – I have to confess that quite independently 3 members, including myself, bought handbags, and several of us are talking of an early pre-Christmas present buying visit.

Sports of various kinds have also featured strongly in the last few months: several members had a first taste of Nordic walking which we hope to continue; Pearl Davies organised a first 10 pin bowling evening at Bedhampton which was a most enjoyable occasion and will definitely be

# Rowland Castle Women's Institute

repeated; and we continued to play darts at the Fountain to whom we would like to say a big thank you.

The WI is affiliated to the Associated Country Women of the World (ACWW) which is an organisation dedicated to helping women in the developing world. They asked the WI to do a sponsored walk, so 16 of our members walked from Rowlands Castle to Chalton, and following a delicious lunch at The Red Lion they walked back and raised £50.

We are very much looking forward to our visit to Bletchley Park in August and if you play Bridge, and have nothing better to do on the afternoon of Thursday August 15<sup>th</sup>, please join us in the Parish Hall at 2pm. Tickets are £6 which includes a very good WI tea and are available from Heather Newman on 92 412357 or me on 01243 377186. All proceeds will go to our Good Cause.



*Photo: WI at Village Fair  
By Graham Croker*

# Girlguiding

## Girlguiding in Rowlands Castle

by Erin

**R**owlands Castle village holds home to a very active group of Girlguides. At the Scout and Guide Hut, three Guiding sections meet every week to make friends and have fun!

The Rainbows are aged five to seven, and are the youngest section of Girlguiding. Recently, they have been working on a resource called Rustle, Bustle, Squeak. This resource has been produced in association with the RSPB. As the Rainbows have been working on this resource, they have been enjoying activities such as exploring the outdoors, making coloured sand bottles, planting seeds and have even visited Pets at Home to find out about small animals.

The Brownies are the next eldest section of Girlguides, and are aged from seven to ten. The girls are currently working on their Road Safety Badge, but over half term they explored their 'Right to be Happy'. This task involved finding out what is good about living, schooling and Guiding in Rowlands Castle and making an enormous, bright collage full of pictures of things that made the girls happy. The Brownies have also recently returned from Pack Holiday in the New Forest during which every girl earned four badges, including their Crime Prevention, Fire Safety and Water Safety badges.

The Guides are aged from ten to fourteen. They have been working on a resource that looks at all aspects of camping. This includes campsites, tents, food and budgets. As a result of all of this hard work, the girls are now preparing for their summer camp this year.

If you are interested in joining Guiding and would like to be a Rainbow, Brownie, Guide, a Young Leader (aged fourteen to eighteen) in any of these sections or can offer time as a regular adult helper please log onto our secure website at:

[www.girlguiding.org.uk/interested](http://www.girlguiding.org.uk/interested)

or Join Us and follow the instructions. For any queries, please do not hesitate to contact the Brownie and Guide Leader, Jane, at :

[girlguiding.horndean@ntlworld.com](mailto:girlguiding.horndean@ntlworld.com)

# Rowlands Castle Golf Club

## Past and Present and an Invitation

By Keith Fisher, Secretary/Manager, Rowlands Castle Golf Club

The golf club is a jewel situated in the heart of our village but, how many of you know its history, or the facilities available for village residents to enjoy?

Rowlands Castle Golf Club was formed in 1902 when the subscription for a two year membership was 2 Guineas! Initially it consisted of only 9 holes. In early 1922 a further 9 holes were added and the layout redesigned. Extra land was purchased in 1973 bringing the course to its existing layout and length. In the mid 70's two pro-ams were held when Open and US Open Champion Tony Jacklin competed. The current course record of 66 was set by a young Malcolm Gregson. Although benign in appearance it is a course which should not to be taken lightly.



In 1906 the first permanent clubhouse was constructed replacing the second-hand railway carriage previously used and the cost of building reached 500 pounds. Further extension work took place in 1929, 1964, 1970 and 1980 with a major rebuild carried out in 1993 with the Pro Shop and outbuildings added in 1996. A very attractive balcony has been added to the Clubhouse's first floor bar and dining room area this year. It provides an excellent place to have a snack or a drink at member's prices and probably gives the finest view across multiple golf holes in the south of England. The Clubhouse has a well stocked bar and serves bar snacks and full meals from breakfast through to dinner, with Sunday lunches a speciality.

The resident PGA Professional, Peter Klepacz, has been at the club since 1980 and has played in such major competitions as the Martini International at Wentworth and the Benson & Hedges International. Everyone, of any standard, is welcome to book a lesson where sessions are focused on adaptation of a person's game to take into account the individual's needs, capabilities and physique. Lessons are held on the extensive practice facilities and no equipment is necessary to get started.

# Rowlands Castle Golf Club

The club boasts a very well stocked Pro-shop run by Peter and son Jimmy. It keeps in stock a range of top brand equipment, clothing and accessories. There are superb deals with packages on offer for both experts and beginners. Customers are allowed a chance to try the equipment before purchasing. To encourage youngsters to take up the game Peter provides **A FREE** series of Sunday morning clinics in late Autumn and early Spring. There are two group sessions, one for under 10's and the other for older children.

There are a wide range of membership options available; including Mens, Ladies, Seniors, Juniors and Social (for non-golfers). Social membership comes at a greatly reduced annual subscription and allows a social member to partake in a wide range of social evenings and special events as well as having full use of the clubs bar and restaurant facilities. The club also offers a warm welcome to societies on Tuesdays and Thursdays and golf packages can be tailored to specific requirements. Planning of the event can also be provided and the minimum number of players acceptable for such events is 12. It is also possible to book a meeting in the ground floor Conference room which seats up to 20 people. Catering can also be provided by the club's staff if required.

Members can also hold private functions for up to 140 attendees at a nominal room hire charge of £50.

**The Invitation?** To complement this article we are holding an Open Days on Sunday 11<sup>th</sup> August from 11.30am to 2.00pm. You are cordially invited to come along to the clubhouse and see the facilities. In the meantime if you have any questions about the Club or Membership whether 'playing' or 'social', contact the Secretary/Manager or Assistant Club Secretary on 023 9241 2784 (Choose option 2 or 3).

The Club's website is [www.rowlandscastle golfclub.co.uk](http://www.rowlandscastle golfclub.co.uk)





# DACD (Rowlands Castle) Cricket Club

## Rain.....What Rain?

by Jonathan law

The 2013 season got off to an uncharacteristic prompt start with our opening fixture at Rowlands Castle recreation ground against IBM at the end of April. The omens were good as Lee Conway scored his maiden century with an unbeaten 101 in a total of 212-6 off 40 overs. Unfortunately a century in reply from one of the IBM openers saw our total passed with 6 wickets and 6 overs to spare.

A further 3 home games on the trot saw successive defeats to The Bell Inn, Old Hambledonians and BAE Systems. Despite the well prepared pitch



containing no demons for the batsmen, DACD never really came close to getting a result. Our much awaited local derby against Clanfield away was cancelled due to the weather and our poor run continued with another comprehensive home defeat by Chidham and Hambrook.

The tide turned with our first away match against East Meon. In a timed game on a slow pitch,

DACD posted a modest total of 98 but then reduced East Meon to 62-8 just failing to take the last 2 wickets to record our first win, but felt satisfied with a 'winning' draw. The game saw 2 magnificent bowling performances with Russ Phillips bowling unchanged for 19 overs taking 4 for 27 and Colin Lord chipping in with 4 for 11 off 8 overs.

A close defeat to DSTL at HMS Dryad in a 20 over game was followed by our long awaited 1<sup>st</sup> win of the season at home to Buriton at the end of May. Director of Cricket Meredydd Hughes led the way with an unbeaten 111 well supported by skipper Guy Andrews also unbeaten with 59 taking DACD to a total of 236-3 off 40 overs. The bowlers then backed up the batting performance to dismiss Buriton for 159 including Meredydd taking his 500<sup>th</sup> wicket and record our 1<sup>st</sup> win after 8 games.

# DACD (Rowlands Castle) Cricket Club

Unfortunately the next two games also ended in defeat before our inter club game in June. On a perfect sunny day at the recreation ground, virtually the whole playing membership plus a few guests played a keenly contested over 50's vs under 50's game. Youthful! exuberance proved no match for guile and experience as the over 50's prevailed. The day was



rounded off with a BBQ to set the players up for the following weeks tour to Wales.

Needless to say what goes on tour stays on tour but I can report that the touring players made the most of the Welsh hospitality in Cardiff and recorded a close win in the only game played against Barry West End CC.

The following weekend saw the DACD Daredevils competing in the annual East Meon 6 a side competition and beer festival. After last years wash out the rain abated just in time to allow the competition to take place with only a 15 minute delay to the 9.30am start time. In what seems a regular occurrence DACD were first up against the hosts East Meon as we entered the field in our luminous lime green shirts and to our anthem the theme from The Good, The Bad And The Ugly, (The Indian Premier League has nothing on us). After a close defeat we comfortably won our two remaining group games and only missed out on qualifying for the final on the slimmest of net run rates to East Meon. We were unable to continue our good run in the 3<sup>rd</sup>/4<sup>th</sup> place play off, still finishing a creditable 4<sup>th</sup>.

The final game covered by this early season report saw DACD retain the Bill Young Memorial Cup against the Tax Office with a comprehensive win at home. The cup is an annual fixture played in memory of Bill Young who lived for playing cricket but whose life was tragically cut short some 15 years ago.

Fortunately I have been able to write a playing report this year rather than a weather report and hope that the second half of the season continues in the same vein.

# St John's Parish Church

## A busy year ahead

by Rev Trevor Filtness, Associate Vicar

Firstly a big thank you to those who came to our Pentecost 'thank you' party for all the organisations who work so hard for Rowlands Castle - it was good to see you.

As we promised in the last magazine, the Church is now open each weekday from 9am to 1pm and I am pleased to say that people are coming in to look at the church and to dwell a while. Our ambition is to open the church for longer but to achieve this needs additional planning and resources. Meanwhile, there is an extensive library of Christian books, ranging from novels to deeper theological studies, which are available to browse, read in the quiet of the church or to borrow and take home. Just leave details in the notebook and help yourself. No fines for late returns, either!

Our notable event of the summer will be our Flower Festival held 5th to 8th of September, to mark the 175th anniversary of our consecration and you will find more details of this in this magazine. I am pleased to say that Councillor John Pickering has agreed to open the event and our new Archdeacon (Joanne Grenfell) will close the event following a Cream Tea and Songs of Praise! Can I thank all of you who responded so quickly to our request for sponsorship and for those who will be contributing a flower arrangement; the response has been really heart warming.

In church we have been working hard on our family friendly worship and as a first step our worship at 10.00 on the first Sunday of each month is full of activity and creative worship for every member of the family. Even if you are a one person family you are included. We aim to take no more than 45 minutes - we would love to see you.

It was delightful to see so many visitors for our Patronal Day festivities, when we had an informal Cafe style church in the Church Centre, followed by games enjoyed by children and adults alike, and a very tasty BBQ. The baptistry was used for a dramatic demonstration of John the

# St John's Parish Church

Baptist's ministry during the service, but then enjoyed by a swarm of children as a paddling pool afterwards.

**With every blessing**

**Trevor**

Contact numbers: 07785 568056; 02392 410111 (Office)



*Photos - Upper: Pentecost celebrations  
Lower: St John the Baptist Patronal Festival*



# FLOWER FESTIVAL

at

St John the Baptist Church  
Rowlands Castle

Friday 6 September to Sunday 8 September 2013

## Festival Programme

Thurs 5	Opening Service	7 pm
Fri 6	Opening Hours	10 - 6 pm
	Flower Demonstration	2 pm
	(by Christing Evans NCFAS)	
	Musical Concert	7.30 pm
Sat 7	Opening Hours	09.30 - 4 pm
	Fish and Chip supper & Quiz	7.30 pm
Sun 8	Opening Hours	12.00 - 4 pm
	Cream Tea	4.00 pm
	Songs of Praise	5.30 pm

Come and check out the Jane Austen connection!

For more information contact [winnpamela@hotmail.com](mailto:winnpamela@hotmail.com)

# Domestic Heating News

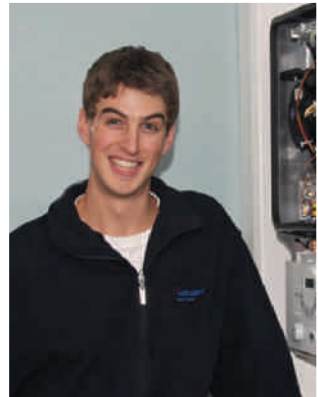
## New device to save gas and water by Nic Radcliffe

The good news this month is that I get the strong impression that the heating industry is trying to do that bit extra to help us use less fuel. Recently they have come up with the weather compensating controls that I've previously written about and have an eye-opening update on below. And now, they have created a new device that I'm trying out at home and I'll tell you more about here.

First an impressive update on the weather compensating controls I mentioned last time (you can see all my earlier articles at [www.nicradcliffe.com](http://www.nicradcliffe.com).) I took out an old floor standing G-rated boiler and hot water cylinder for my customer, Julian, about this time last year. I replaced them with a new A-rated boiler and pressurised hot water cylinder with weather compensating controls. I've been back to see how he's getting on and he's given me some great feedback. Julian has worked out that over the year they saved 6600Kwh, which is a 60% reduction in gas usage. This is a saving for him of just over £520 a year. A very impressive return!

Next, there is a new device on the market that if you have a combination boiler could help you use less gas and water. When the hot tap is turned on, this clever valve reduces the flow of water through the boiler until the boiler warms up. It then gradually increases the flow rate as the boiler warms. The result is that the boiler warms up more quickly and so saves gas. It also saves water by not wasting so much cold water running till the hot appears - if you have a combination boiler you'll know what I mean. To give it a proper test, I have recently fitted one in my own house - yes I've at last moved out of mum and dad's and we have our own place in the village! I will keep you posted of the devices progress.

I hope this has been helpful. If I can help you at all, please give me a call on 07905 908143 I hope this has been helpful. If I can help you at all, please give me a call on **07905 908143**.



## Roads and Footways and Keydell Inquiry by Marge Harvey (District Councillor)

**D**ear Rowlands Castle Residents,  
The first thing I want to say is a big thank to you all for voting me in to represent you at Hampshire. As you know I will always try my best and whether or not you voted for me, I will represent you all.

Roads and Footways are always something that need doing and I hope that if you see a pothole or footway that needs repair and that you cannot get satisfaction from reporting it, inform me and I will chase it up on your behalf.

I have been put on three committees, The Children's Select Committee, Safe and Healthy People Select Committee and the Tourism Committee.

I am also a Hampshire County Council Representative on the Community Advisory Committee, (which incidentally is changing its title to The Community Engagement Committee ) and Portsmouth Water Reservoir Committee.

On a local issue, I have asked the Hampshire Roads Maintenance Team to put Bowes Hill and Redhill Road on the list for re-surfacing. Of course I will still have to fight for this to be done in the years 13/14 but at least it has been brought to their attention.

For your general information, I have also been doing work in Road work in Horndean as part of my patch, especially the road adjacent to the ex-Gales Brewery Site.

So I am pretty busy at this time and when I get to know these committees better I will report on them to you.

When I heard the result of the Keydell enquiry I felt that all the work I had done to get it refused at EHDC had been worthwhile. It meant that we were able to defend the village at the enquiry because it had received permission at EHDC by the Officers but turned down by the Councillors .Without the Councillors refusal there would have been no chance to defend it and no need for an appeal.

I would like to take an opportunity to thank the original officer who refused the application on Landscape issues and the officer, Nick Jarvis, who stood by me in defending the appeal. He was chosen especially for this appeal



## County Council News

by the Head of Planning. I felt that S7 was the key issue and that was what I managed to get it refused by; 9 to 1 at EHDC.

I would also like to thank the Parish Council for taking on the traffic and rights of way issues. I do not think that without our combined efforts we could have won.

But not least of all, the residents of Rowlands Castle showed by their attendance how much they considered the application and I am thankful for their input. I really think that it impressed the Government Inspector by the level of interest shown.

At EHDC things have changed since I last issued my report to you all. The Leader of the Council has been replaced from Councillor Moon to Councillor Cowper. There are lots of other changes, but the one that appears more noticeably to affect the current issues is that David Parkinson is Portfolio holder for Planning.

His experience is important, because, as you may know, the Core Strategy is being re-vamped to take in the recently updated Government Housing figures and the comments by the Inspector on our newly presented Core Strategy. This final presentation of the Core Strategy will decide how many houses that the Southern Parishes of Clanfield, Horndean and Rowlands Castle will have to take.

The South Downs National Park which divides our area is taking a difficult stance on housing and as expected, will leave EHDC taking the extra housing recommended by the Government in the North and South of the District.

From a local view, you can be assured that I will be fighting on your behalf to restrict the number of houses that Rowlands Castle is allocated.

The decision on how many houses are to be allocated will be taken over the following months and I will keep you and the Parish informed. I am hoping that the allocation will treat the three Southern Parishes as one and therefore it is likely any additional housing can be accommodated outside the village boundaries.

As you can see the issues are very complicated, but as I have done in the past I will always have the interests of the village utmost in my thoughts when I make my decisions.

I am available at my local Surgery in Rowlands Castle or I also hold a Surgery at Lovedean Village Hall and at Merchistoun every month. So if you miss one there are three each month when you get the chance to have a one to one discussion on Hampshire issues, but I am always happy to take a call or an e mail. My telephone Number is 02392 413858 and my e mail address is [margieanddave@aol.com](mailto:margieanddave@aol.com) or [marge.harvey@hants.gov.uk](mailto:marge.harvey@hants.gov.uk).



# Constituency News

## The Blue Apple Theatre proudly presents

### “Living Without Fear”

By George Hollingberry MP

This may seem like an unusual subject for a local magazine article and it is certainly miles away from my usual fare. I wanted to tell you this month about the Blue Apple Theatre group who performed in Parliament a few weeks ago.

This award winning performing arts company is based in Winchester and showcases the talents of actors with learning disabilities. With a membership of over 70, the company is one of the leading disability arts companies in the south and last year performed to over 3500 people.

Their latest offering, ‘Living without Fear’ is a hard-hitting piece of drama providing an insight into the hate crime and prejudice that young people with learning disabilities face. This performance contrasts with other stage plays in that it is the personal experiences of the cast which form the basis of the script.

We seldom have the chance to stand in someone else’s shoes, literally see life through someone else’s eyes but this performance provides that rare encounter. Here is a performance which demonstrates the challenges of living with a learning disability and facing the subtle forms of harassment and intimidation dealt by the more able-bodied.

One scene reveals three young people with learning disabilities cowering together inside their home while outside, a group of young ‘hoodies’ hurl bottles and abuse at the windows “*Little pig, little pig... let me come in.*” Harrowing and a clever modern take on a classic nursery rhyme.

Heavy stuff for a night out you might think, but with around 65,000 hate crimes of the sort described above occurring annually in the UK, it is vitally important that we get this message across. Particularly since only one in thirty of these terrible acts of intimidation is currently reported.

I believe it is important for all of us to understand the challenges which people with learning disabilities have to cope with. In my view a starting point would be bringing this performance to local schools. For me there is no better education than this show.

Blue Apple Theatre have played at many of the mainstream theatres in the south. If you know or are part of a group that might benefit from seeing them they would be delighted to hear from you. Full details of performance and contact details can be found on the group’s website: [www.blueappletheatre.com](http://www.blueappletheatre.com)

*“Startling. Wonderful. One of the most powerful performances seen in Winchester for many years,” reports the Hampshire Chronicle.* This is an opportunity to learn and see something extraordinary.

# Constituency News

## Localism

by George Hollingberry MP

There has been a lot of comment in the press recently on the subject of localism. For many, this topic is rather abstract and difficult to define. For others it's a catch-all term used to allow people to speak out against any housing development in their area. With this in mind, I hope I can explain localism and to clear up a few misconceptions.

Under the last government, housing numbers were set in Whitehall and were imposed upon councils and communities as part of vast regional blocks. These regional strategies gave local councils a mandate to simply force houses on an area with very little consultation with local people. Under that system, you elected your councillor every four years and then you butted out and left them to make all the decisions.

The introduction of the Localism Act in 2011 changed this and gave communities a real say on development in their area for the first time in decades. It allowed groups of residents to get together and write their own plans for how their community should be shaped through a mechanism called a Neighbourhood Development Plan. In areas like Denmead, Horndean and Swanmore these plans are well under way and will soon form a part of the districts official planning document, known as a Core Strategy.

Now, I will admit the process is not without criticism. Some say that localism didn't go far enough, didn't free communities completely from the cold dead hand of bureaucracy. And yes, there are still limits to the powers available, for very good reasons. Localism is not a mechanism which local people can use to block all development in their area, nor should it be. Rather, it is a compromise between local residents and the district council.

Planning authorities discuss with local communities how many houses are needed in an area over a certain period and local people choose where those houses should be built. This allows communities to have a say while ensuring that sufficient number of houses are built.

The truth is that we need more houses in our part of the world. There are many thousands of people trying to get on the property ladder in our area alone and we will never solve our housing crisis by adding a few houses to our villages, we must think more strategically.

The question has also been asked why parish councils are not given more powers in the planning process. Quite rightly, the decision was taken to give the lowest fully elected authority (i.e. a district council) the responsibility for planning matters as they are always accountable to the electorate. Many parish councils have members who are co-opted rather than elected, leading to the possibility of vested interests trying to hold undue influence of planning decisions. Imagine, for example, if a local developer was co-opted onto a parish council and then started granting planning permissions for his own developments. At district level there are checks and balances, declarations of interest and due diligence to prevent such a situation from occurring. To make a similar system possible at parish level would mean a massive increase in precepts - or the cost to you the taxpayer.

Inevitably, in any system of this sort there are compromises to be made. Clearly, localism doesn't mean absolute freedom for local people but rather that planning decisions are taken as locally as is practical at district council level.

## A Busy Summer

by Chairman of the Council, Cllr John Pickering and Clerk to the Council, Lisa Walker

**P**lanning: A separate note is included in this issue reflecting on the Council's experiences at the Inquiry into the Keydell Appeal, the outcome of which is likely to have an important bearing on the future of our village. Here, may we express our sincere thanks to all those who assisted, by their research and advice (especially John Adams and Cllrs Greg Beckett-Leonard and Bill Wilson), general support and attendance at the Inquiry, those who contributed to the Council's Fighting Fund and the many people who have sent messages of congratulation at the outcome.

Our experiences have shown the importance of testing all advice and decisions by officers at District and County Council levels. They cannot be expected to understand the local situation as well as residents, but we have been concerned at some of the views expressed by officers in the early stages of consideration of the Keydell planning application at the Mays Coppice Farm site. The Inspector's Report shows that we were right to be separately represented at the Inquiry.

We now await the further proposals from the officers charged with producing a revised Joint Core Strategy, especially as regards housing provision throughout East Hampshire and the equivalent part of the South Downs National Park. We understand this will be the subject of a further 'examination' in the Autumn. Your Parish Council will seek to serve the best interests of the Parish in this process, while being a responsible participant in the wider debate on the response to housing and other development needs.

**Recreation Ground:** At the Recreation Ground, you may have noticed there have been some additions. Thanks to the generosity of the Village Fair Committee, together with contributions from the RCA, EHDC, HCC (via former Cllr Councillor Darragh's fund) and the Community Forum, seven pieces of outdoor gym equipment were installed near the car park in March this year. The Village Fair also funded an outdoor table tennis table which was installed near the play equipment in June. We hope all this new equipment adds to local residents' enjoyment of the Recreation Ground, and look forward to seeing it used by all ages as much as possible.

The Parish Council is progressing plans for a refurbishment of the Pavil-

# Parish Council News

ion and the provision of public WCs at the Rec. An architect has been selected and plans are being finalised. It is expected that existing developers' contributions will be used in financing the project.

**Armed Forces Day:** Having consulted widely, and in light of the considerable additional burdens on the Parish Office from the Keydell Inquiry, the Council decided to take no action in relation to Armed Forces Day this year. This is no reflection of the value we place on our armed forces, or those who serve in them and have done so in past years. This celebration is a quite recent initiative of central government, and we feel it is important that it should not reduce the focus on Armistice Day on 11 November each year, and Remembrance Sunday.

As Parish experience shows with the successful Diamond Jubilee celebrations, Village Fair, Bonfire and Fireworks Night, Flood Action Group and the many voluntary organisations, numerous significant activities are well-organised without the direct leadership of the Parish Council. This is as it should be. There is much to be said for a similar approach to Armed Forces Day. Indeed, we are pleased to learn that an appropriate commemoration did take place on 29 June this year with the raising of the Union flag on The Green.

Next year will mark the Centenary of the outbreak of the First World War, the 70<sup>th</sup> Anniversary of the D-Day Landings, as well as the Centenary of our own Parish Hall. These will all be of considerable significance and the Parish Council will seek to join with others to ensure these are marked in an appropriate manner.

**Village Post Office:** Residents may be aware of the public consultation regarding possible changes to the service offered in the village by the Post Office. At its Meeting on 1 July, the Council reviewed these changes, with the considerable assistance of Graham Griffiths, formerly our Sub-Postmaster, and Rosemary Martin, who has much experience of working in local post offices. Council's desire is to see as wide a range of services as possible provided by our village Post Office. This would enhance the benefits to residents and ensure its viability. Concern was expressed, particularly at the proposal to withdraw the International Parcels service, and the implications for customer privacy of the open plan arrangements. We doubted that the proposed enhanced opening hours would generate sufficient extra revenue to offset the additional costs incurred. The Council will reply to the consultation making these points.

**Traffic Matters:** We still await action by Hampshire Highways to install

# Parish Council News

bollards preventing vehicles driving on the pavement in parts of Links Lane, and unfortunately the layby and drainage works on Manor Lodge Road have been delayed. Council notes residents' continuing concerns regarding speeding vehicles in the Parish. Council is looking to extend the use of its Speed Limit Reminder device, and has identified additional sites on Redhill Road and Castle Road. Recently, the device has also been fitted with software to upgrade its data collection capability, which can then be used to inform local police operations in tackling speeding. Council is also considering purchasing a second device, funds permitting.

Meanwhile, let's hope for a sunny Summer, memorable for all the right reasons!

## **Highways (roads/pavements, drains, street lighting, overgrown vegetation etc)**

HCC Contact Centre: 0845 603 5633

Report on-line at: [www.hants.gov.uk/roadproblems](http://www.hants.gov.uk/roadproblems)

## **Rights of Way (footpaths, bridleways etc)**

HCC Contact Centre: 0845 603 5636

Report on-line at: [www.hants.gov.uk/rh/row/problem-report.html](http://www.hants.gov.uk/rh/row/problem-report.html)

## **East Hampshire District Council (waste collection, planning matters, environment)**

Main Switchboard: 01730 266551

Website Home Page: [www.easthants.gov.uk/](http://www.easthants.gov.uk/)

# Keydell Inquiry

## Reflections on the Keydell case

By Cllr John Pickering

Rowlands Castle Parish Council thought carefully before deciding to become fully involved in supporting East Hampshire District Council in opposing the Keydell Appeal to relocate its garden centre from Horndean to the countryside south of Rowlands Castle village. However, the successful outcome – the Appeal was dismissed - made it all worthwhile.

Formalities began with an outline planning application, refused by EHDC's Planning Committee (by one vote), in August 2011. This was followed by a full application in April 2012, also refused by the Committee, (against the advice of EHDC planning officers). On both occasions, the Parish Council made written and oral representations opposing the application – on both landscape and traffic and safety grounds. However, EHDC's reasons for refusal referred only to landscape issues.

Keydell then appealed, leading to a Public Inquiry conducted by a Planning Inspector around the beginning of May 2013. Although EHDC was the main 'defendant' to the Appeal, the Parish Council sought and was granted formal status to participate in the Inquiry. Three Councillors (aided by the Clerk) worked hard on the analysis of data, testing Keydell's evidence and formulating arguments on behalf of the Parish. Two expert witnesses aided our work without charge: Dr Lee Woods from the University of Portsmouth on highway matters, and Mrs Sue Montila on behalf of bridleway users.

We also agreed we needed formal legal representation to advance our arguments in the most effective way. We knew this would cost money, however we were able to negotiate favourable terms. The specialist solicitor and barrister we appointed worked very well together, and with the Council members and witnesses. We opened a 'Fighting Fund', which currently will cover around half the costs we will have incurred in fighting this matter. This has come from some 40 different contributors, to whom we are extremely grateful. Their generosity is a clear sign of the strong opposition in Rowlands Castle to Keydell's proposals. This was also reflected in the large public attendance at each day of the Inquiry. The fund is still open for further contributions!

The Inspector's report and decision was delivered in good time. With admirable clarity, he found that the proposed relocation would have adverse impacts on the landscape (as EHDC and the Parish Council had argued) and on highway safety (as the Parish Council alone had argued). So the Parish Council's involvement was well and truly vindicated. We did make a difference and local concerns won through against the views of officers of the District and County Councils.

We believe the land at Mays Coppice Farm should now be left for appropriate agricultural use, with the environmental and ecological benefits that will offer. We trust that, as our neighbours, the owners of Keydell will now respect the decision of the Inspector and the wishes of the Parish as a whole.

## May Day Picnic

### Record Sum raised for Rowan's Hospice

By Barbara Openshaw

It was a wonderful day on The Green.

The Blendworth Brass Band played magnificently

The sun shone brilliantly.

The queue for the b-b-q was long.

The results of Dave's cooking of Treagust's beef burgers and hotdogs were delicious.

Verrecchia's ice creams were devoured with great pleasure

The crowds chatted.

The cars gleamed.

Pat Carter sold plants.

The Allotment Ass. sold homemade cakes and preserves

Everyone gave money for The Rowans, including Trinity Angels Cleaning Agency.

Last year a wash out.

**This year a record cheque  
to The Hospice**

**£ 750.03**

Thank you to you all for the outstanding generosity.

Barbara Openshaw 92412400

# Ashley Electricians

Dalkieth, Woodmancote Lane, Woodmancote,  
West Sussex PO10 8RD

- Local reliable electrician.
- All electrical work undertaken from sockets to rewires.
- Free visual safety checks & estimates.
- Fully insured & Part 'P' registered.
- Member of Trading Standards 'Buy with Confidence' Scheme.

Contact Ed Ashley on 01243 373195 or 07733 467536

[ejashley@tiscali.co.uk](mailto:ejashley@tiscali.co.uk)

[www.checkatrade.com/ashleyelectricians](http://www.checkatrade.com/ashleyelectricians)

**Checkatrade.com**  
Where reputation matters



## **Under 5s Children's Christmas Party**

**Sunday 16th December**

**St John's Hall**

**Magic Mikey**

**Father Christmas**

**Party food**

**Put it in your diary now**

**Don't miss out.**

## **Why not advertise here?**

Local businesses are welcome to advertise in RCA Village Magazine. It's low cost and your advert will be seen by every household in Rowlands Castle, Finchdean and the surrounding area.

For more information contact

**Prue Amner**

**Advertisement Manager**

RCA Village Magazine

Email: [adverts@rowlandscastle.com](mailto:adverts@rowlandscastle.com)

or phone Tel 023 9241 2459



# MARTIN STEELS LTD

OPTOMETRIST & CONTACT LENS PRACTITIONER

[www.martinsteels.com](http://www.martinsteels.com)



## Opening Hours

Monday – Friday 9am – 5.30pm

Saturday 9am – 1pm We now  
have CUSTOMER PARKING!

## FULL EYE EXAMINATION

Including Glaucoma Screening,  
Digital Retinal Imaging, specialist advice on  
the latest lens design

Optical Coherence Tomography (O.C.T)

Affordable and Designer Eyewear

NHS sight tests for eligible clients

Competitive prices on all frames

Contact lens fitting and handling

(For full details see our website)



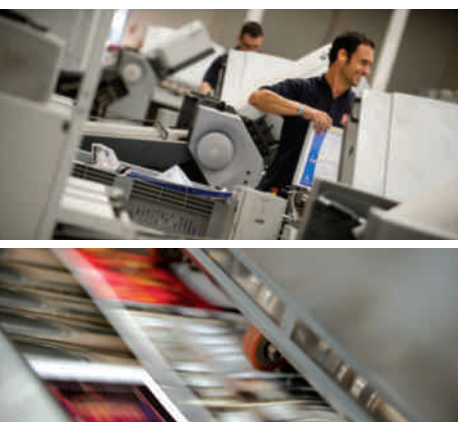
**4 THE OLD FLOUR MILL, EMSWORTH,**

**PO10 7BT TEL: (01243) 375141**

# Print. Perfected

As the South's largest commercial printer,  
we handle all your print needs:

**Programmes • Brochures • Folders • Catalogues  
Stationery • Flyers** and much much more...



**DELIVERIES ON TIME EVERY TIME.  
QUALITY GUARANTEED.**



Follow us on Twitter for up to the minute news,  
print tips and last minute offers.

*Large enough to cope, small enough to care*

T: 023 9233 4900  
enquiries@bishops.co.uk  
**www.bishops.co.uk**



**Print. Perfected**



**Inspiring gardens....**  
**from concept to completion**

*Landscaping • Bespoke Designed Gardens • Planting*



*Extending your home into your garden*

**FREE CONSULTATION AND QUOTATION**

**Tel: 02392 413865 Mobile: 07767 867603**

office@charlesworthoutside.co.uk www.charlesworthoutside.co.uk



**HEATING • PLUMBING • BATHROOMS**

I can help with all your boiler, heating, plumbing and bathroom needs.  
 And I live right here in the village, so can call round at short notice.

**Here's my number.**  
**Please keep it in a**  
**safe place.**

**07905 908143**



**City & Guilds**  
 Qualified





# DITCHAM PARK SCHOOL

*Where every child is known and valued*

A co-educational, independent day school for children aged 4-16 years  
near Petersfield, Hampshire

- Caring family atmosphere.
- Small classes and individual attention.
- Impressive GCSE results.
- Wide range of extra-curricular activities, especially in music and sport.
- Outstanding location with excellent facilities including a superb sports hall



For further information please  
contact the school office

☎ **01730 825659**

[www.ditchampark.com](http://www.ditchampark.com)  
[admissions@ditchampark.com](mailto:admissions@ditchampark.com)

# fabulous flooring with a perfect fit!



visit our website to find out more... [waterloovillecarpets.co.uk](http://waterloovillecarpets.co.uk)

Service is the secret of satisfied customers and satisfied customers are the secret of our 45 year success.

- Fabulous Carpets from Greendale & Brintons
- Crucial Trading Specialist - Wool & Natural Flooring
- Fabulous Vinyl Tiles from Amtico, Karndean & Vusta Planks
- New Click Only Vinyl Tiles & Planks from Victoria Luxury Flooring
- Fabulous Pergo Laminate Floors with New Designs
- Oak Floors – Engineered Planks & Solid Click
- Fabulous Bamboo, Cork & Rubber Flooring
- 12 MONTHS INTEREST FREE CREDIT on all products



We promise you a flooring that fits your requirements, fits your budget and fits beautifully into your home. Please call in, anytime.

## A pleasure to come home to.....

31 The Square, Petersfield, Hampshire Telephone: 01730 262223/267381 Fax: 01730 267394  
email: [sales@waterloovillecarpets.co.uk](mailto:sales@waterloovillecarpets.co.uk) [waterloovillecarpets.co.uk](http://waterloovillecarpets.co.uk)

## Gentle Touch cst



**Louise Toone** BCST RCST

***Have you thought about trying  
Craniosacral Therapy?***

***It's a gentle and safe, clinical  
treatment that can help you get  
better, faster.***

The therapy is especially suitable for helping:-

- Headaches and Migraine
- Low energy states
- Emotional Overwhelm
- Stress Symptoms
- Back and neck conditions
- Insomnia
- Recovery from Surgery
- Asthma
- Post-traumatic Shock
- Arthritis

**Convenient appointment times in Rowlands Castle**

**or at The Botley Clinic. Call Louise on 02392 413278**

[www.gentletouchcst.com](http://www.gentletouchcst.com)

## Open Morning at Portsmouth High School

**Saturday 5 October 9.30 to 12.30**

[www.portsmouthhigh.co.uk](http://www.portsmouthhigh.co.uk)

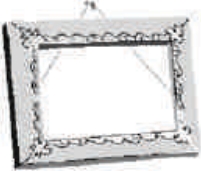


**Portsmouth  
High School**

An independent school for girls from  
Nursery to Sixth Form educating girls  
for the challenges of the 21st Century

023 9282 6714  
admissions@por.gdst.net  
Part of the GDST network of schools

**Specialists in educating girls**



## Petersfield Framing Studios

### Picture Framing by Andy Parks, MA, G.C.F.

- ◆ Collection and Delivery Service in the Rowlands Castle area.
- ◆ Guild Commended Framer (G.C.F.) with 23 years experience.
- ◆ Over 400 different mouldings and 200 mount boards to choose from.
- ◆ Very competitive prices.
- ◆ Picture framing tuition also available.
- ◆ Tel: 01730 269926.
- ◆ Visit: [www.petersfieldframing.co.uk](http://www.petersfieldframing.co.uk)

***"We Collect and Deliver Your Picture Framing"***

**microsomma**



### IT Support for Home & Small Business

[www.microsomma.com](http://www.microsomma.com)

Please see my website for local recommendations...

**Reliable & Local**

**Available 7 Days**

**Qualified & Experienced**

**0845 0170772**

**07796 346526**

**[david@microsomma.com](mailto:david@microsomma.com)**



**NURSERY**

Where play and learning fit together

at

ROWLANDS CASTLE ST JOHNS CEC PRIMARY SCHOOL

Whichers Gate Road, Rowlands Castle

Hampshire PO9 6BB

OPENING TIMES: Monday to Fridays 8.30am ~ 4.30pm

For children aged 2-5 years

Ofsted inspected

Early Years Foundation Stage curriculum

For a prospectus, or to arrange an informal chat, please drop in or contact:

LORRAINE BRYANT ~ Manager on 023 9241 2095

**'A QUALITY PLAY SCHOOL WITH AFFORDABLE FEES'**

**St. Johns CEC Primary School**



Registration Charity Number: 1088132

**ELIZABETH TURNER**  
**PROFESSIONAL**  
**CURTAIN MAKER**

CURTAINS, BLINDS OF ALL TYPES, PELMETS  
AND VALANCES, CUSHIONS ETC.  
TRACKS, POLES AND  
FITTING SERVICE  
FABRICS, TRIMMINGS  
FOR FREE ESTIMATE WITH EFFICIENT AND  
FRIENDLY SERVICE

TELEPHONE / FAX 01243 389939

**PROFESSIONAL PLUMBING  
& HEATING SPECIALISTS**

***A. A. BARRETT***

51 Hatchmore Road  
Denmead  
Waterlooville  
PO7 6TE

Tel: 023 92258057  
Mobile: 07802321269

*Mobile Hairdresser*



Call Caralyn on 07761388654



**R&J PLASTERING**

- free estimates
- 25yrs experience
- plastering
- insurance repairs
- floor screeding
- rendering
- coving
- pebble dashing
- general building work

4 Bowes Hill, Rowlands Castle,  
Hampshire. PO9 6BP

07958-285409 02392 413285

[R.jmplastering@hotmail.com](mailto:R.jmplastering@hotmail.com)

**BALANCE FIT**



Personal Training:

to meet your personal needs.

Cardio, toning, postural and  
rehabilitation exercises.

Pilates and Stretching.

**BOOT CAMP CLASSES AT ROWLANDS CASTLE.**

**Also available SPORTS MASSAGE**

For more info contact: STACEY BSc, Reps Level 3

07957 215459 / [merrittstacey@hotmail.com](mailto:merrittstacey@hotmail.com)





[www.vintagefolly.co.uk](http://www.vintagefolly.co.uk)

Elegant Mirrors  
Beautiful Beds  
& Linen

❖  
Vintage Folly  
Oakham Farm, Church Ln  
Oving, P020 2BT  
01243 776811

## MORRIS BUILDING SERVICES

Shaun Morris

113 Finchdean Road, Rowlands Castle, Hants, PO9 6EN

RENOVATIONS  
ALTERATIONS  
SMALL WORKS

ALL ASPECTS OF PROPERTY MAINTENANCE AND  
REPAIRS, INTERNAL AND EXTERNAL

ROWLANDS CASTLE  
(023) 9241 3130

FREE ESTIMATES  
07941 742598



- Do you have Arthritis?
- Do you feel stiff and in pain?
- Would you like better strength, mobility, posture and balance?
- Do you want to improve your fitness?
- Would you like to feel better and have more energy?
- Would you like to meet other people with arthritis and have fun?

**Then come and try a FREE Taster Class**

Local exercise classes to suit your needs run by Chartered Physiotherapist Juliette O'Hea For more details call Juliette 02392 413885 or 07974 238787. Email: [physio@arthritisfirst.co.uk](mailto:physio@arthritisfirst.co.uk)

# S.Roberts Upholsterers

## Professional Upholstery

Contract & Domestic Any size of work undertaken

We provide a free measuring and quotation service.

Find us on CheckATrade.com

Call on 01243 377200 for all your Upholstery requirements.

email: [srulimited@hotmail.com](mailto:srulimited@hotmail.com)  
[www.re-upholster.co.uk](http://www.re-upholster.co.uk)



Proud members of  
**Checkatrade.com**  
Where reputation matters



S Roberts Upholsterers Ltd  
Unit 17 Clovelly Rd, Southbourne  
Emsworth, PO10 8PD

## Burchett Decorators

- Domestic, Commercial & Insurance Work
- 22 Years Experience
- All Types of Decorating including Wallpapering, Coving & Carpentry
- Fully Insured
- Clean, Tidy & Friendly Service

Ring for FREE Estimate  
or Just Helpful Advice

07866 691 984  
023 9241 3548

Email: [Burchett.davis@btinternet.com](mailto:Burchett.davis@btinternet.com)

Keith was friendly, reliable and worked exactly as he promised to, neat, tidy and very personable

Customer, Stedham, 2012

**Checkatrade.com**  
Where reputation matters

10/10

Member for 8 years

Burchett Decorators, Finchdean, Nr. Rowlands Castle, Hampshire



BUILDING CONTRACTORS

COMMERCIAL, INDUSTRIAL and  
MAJOR DOMESTIC WORKS

Joinery Mill, The Green, Rowlands Castle,  
Hampshire. PO9 6BW

Tel 023 9241 2741  
www.winnicott.co.uk

*Established*  
**1904**

Fax 023 9241 2212  
mail@winnicott.co.uk

A promotional graphic for Home Hardware. It features a blue banner with the text 'homehardware' in white and yellow. Below the banner, the slogan 'Not just paint!' is written in yellow on a blue brushstroke background. To the right, a paint can is shown. Below the slogan, the text 'WE COVER EVERYTHING!' is written in white. Underneath, three checkmarks are followed by the text: 'GREAT SAVINGS ON MANY RANGES', 'FRIENDLY EXPERIENCED STAFF', and 'OPEN SUNDAYS'. To the right of this text is the Dulux logo, which includes the text 'Dulux' and 'PAINT MIXING CENTRES'. On the left side of the graphic, there are four small images: a red lawnmower, a bird feeder with two birds, a white toaster, and a white HG paint can. Below these images is a 'Family Run' logo. At the bottom left, there are six store locations listed with their telephone numbers: Austens (Petworth, Billingshurst, Midhurst) and Alton (Emsworth, Romsey, Rowlands Castle). At the bottom right, there are three more small images: a knife block, a pair of pliers, and a metal pitcher. The website address 'www.rowlandshomehardware.co.uk' is printed in white on a blue background at the bottom of the graphic.

**homehardware**  
**Not just paint!**  
**WE COVER EVERYTHING!**  
✓ GREAT SAVINGS ON MANY RANGES  
✓ FRIENDLY EXPERIENCED STAFF  
✓ **OPEN SUNDAYS**  
**Dulux**  
PAINT MIXING CENTRES

**Family Run**

**Austens**  
Petworth  
Tel: 01798 342104  
Billingshurst  
Tel: 01403 782963  
Midhurst  
Tel: 01730 815979

**Alton**  
Tel: 01420 85115  
Emsworth  
Tel: 01243 376852  
Romsey  
Tel: 01794 512141  
Rowlands Castle  
Tel: 02392 412332

**www.rowlandshomehardware.co.uk**

# CHILDRENS LEARNING CENTRE

**RATED OUTSTANDING BY OFSTED 2011**

Member of; 4Children

125 New Brighton Road, Emsworth

## EDUCATIONAL NURSERY AND DAY CARE SERVICES

OPEN 50 WEEKS A YEAR 8.00AM - 6.00PM

We offer full time and term time care for children from 0 – 5 years, hours and days to suit your requirements. Also we provide holiday activities for children 3 – 5, school age children – 12 years and an after school club

Telephone: 01243 372015 or email: [childrenslc@btconnect.com](mailto:childrenslc@btconnect.com)



 **02392 412 606**

 [info@stylestudio-rowlandscastle.co.uk](mailto:info@stylestudio-rowlandscastle.co.uk)

### Your local Hair and Beauty Salon

Recommended by The Good Salon Guide, we're situated in the heart of Rowlands Castle.

Offering a professional portfolio of hair and beauty treatments by a team of experienced hairdressers and beauticians.

- Hair for ladies and gents
- Beauty
- Special packages
- Late appointments available by request

Contact us: 3 Links Lane, Rowlands Castle, Hampshire, PO9 6AD

Find us online: [stylestudio-rowlandscastle.co.uk](http://stylestudio-rowlandscastle.co.uk)



**Extra Mech  
(Services) Ltd.**

**YOUR VILLAGE PLANT HIRE  
COMPANY SUPPLYING A FULL  
RANGE OF GENERAL PLANT**

**SEE OUR VAST RANGE  
ON OUR WEBSITE  
[WWW.EXTRAMECHSERVICES.CO.UK](http://WWW.EXTRAMECHSERVICES.CO.UK)**

**OR  
CALL AND DISCUSS ON  
023 92 412888**



**Richard C Arnold**

Optometrists & Contact Lens Practitioners

Est 1890.

# Eye Care Eye & Wear

極度乾燥(しなさい)  
**Superdry.**

**GUCCI**

SERENGETI  
EYEWEAR 

**EMILIO PUCCI**

**GIORGIO ARMANI**

**MICHAEL KORS**

**bollé**

**FENDI**

**Dior**

**DF**  
DESIGNER FRAME

  
**adidas**

*Ray-Ban*

*Maui Jim*

**uvex**

Weekdays:  
9am to 5:30pm  
Saturdays:  
9am to 5pm



Why not join the **eyeplan™** care scheme?  
Fixed monthly payments. Free eye tests.  
Savings on eyewear and many other benefits.

**Petersfield: 01730 263302**

**Midhurst: 01730 814035**

**Cowplain: 02392 250641**

**[www.rcarnold.co.uk](http://www.rcarnold.co.uk)**

**Care • Quality • Value • Choice • Service**

**Richard C Arnold  
Optometrists**



## Legal Advice You Can Trust

George Ide LLP Solicitors has a well established and highly regarded private client department which deals with all aspects of Wills, Probate, Trusts, Court of Protection and Powers of Attorney.

### **We can advise you on:**

- The preparation of a Will
- Obtaining Probate
- Executor Responsibilities
- Investment Advice
- Post Death Variations
- Inheritance Tax Planning
- Trusts
- Lasting Powers of Attorney
- Court of Protection Issues

The breadth and depth of the expertise of our team is such that we offer private individuals and families a tailor made personal service of the highest quality.

We provide specialist advice to manage the personal affairs of individuals at every stage of their life. Our experienced Solicitors have a sound understanding of the issues, which can affect your personal wealth and family relationships and will take all of the necessary steps to protect your interests every step of the way.

Contact Ian Oliver on: 01243 812421  
ian.oliver@georgeide.co.uk  
www.georgeide.co.uk

On your side










## Relax and unwind in your stunning new bathroom

As the weather gets warmer, freshen up in a stylish new bathroom from Aqua Bathrooms. From concept through to completion, our experienced and talented designers can help make best use of your bathing space.

We offer a full range of products from the finest designers and manufacturers. Our experienced installation team will ensure your bathroom is correctly installed with minimum fuss and disruption to your home.

Our friendly and knowledgeable team are highly skilled and experienced and have built up a strong reputation for quality and reliability.

All our work is fully guaranteed so rest assured that entrusting your bathroom design and installation to Aqua, you will be in good hands.

-  **Innovative and quality products**
-  **Beautiful tiles & elegant lighting**
-  **Professional installation**
-  **Bespoke design service**
-  **Disabled facilities**
-  **Stylish decorating**
-  **Peace of mind**



**Make your dream bathroom a reality...**

To find out more, call into our showroom, or visit [www.aqua-ltd.co.uk](http://www.aqua-ltd.co.uk)

18 Elm Grove, Hayling Island, Hampshire, PO11 9EF ☎ 023 9246 6007