

Rowlands Castle Association



Summer 2012

Village Magazine

www.rowlandscastle.com

Your dream... Our creation



Chantry House Oak have been Designers and makers of quality furniture, joinery and Oak frame structures since 1999. We have produced many solid oak and painted kitchens, fitted wardrobes and studies. Garden structures, summer houses, gates and car ports are among the many items that we have been producing from our Oving workshops over the past years. Visit our Workshop and showroom or email your enquiry for a no obligation quote.

Chantry House Oak

Oakham Farm, Church Lane, Oving, West Sussex PO20 2BT

Telephone: **01243 776811**

www.chantryhouseoak.co.uk shop@chantryhouseoak.co.uk



Village Magazine Summer 2012

RCA Chair's Report	4-5
Volunteer Award	7
Mayday Picnic	8
Armed Forces Day	9
Diamond Jubilee	10-25
Village Fair	26-33
St John's Summer Fair	34
St John's Talent Competition	35
Tennis Club	36
Castle United F C	37
Cricket Club	38
St John's School	39
St John's Church	40-41
Ordination	42-43
Church on The Green	45
Letters to the Editor	46-47
County Council News	51
District Council News	52-53
Parish Council News	54-55

The Village Magazine is published three times a year by the Rowlands Castle Association. The aims of the RCA are to act as a channel of communication for the Village, to conserve the character of the Village and to enhance the life of the Village.

Editor: Richard Milton, 3 The Green, Rowlands Castle, PO9 6BW
Tel: 02392 413292 email: editor@rowlandscastle.com

Cover picture: Andy Rowley, Head teacher of Ditcham Park School, gets into the Jubilee spirit on Rowlands Castle Green.

Photo: Pat Carter

Rowlands Castle Association

A year of celebrations for the Village by Catherine Billam, Chair, RCA

What a year of celebrations we are having. We've made this a bumper edition of the magazine to get everything in. In the last few months, our community has celebrated the Queen's Diamond Jubilee, Armed Forces Day, St John's School Summer Fair, the Village Fair, St John's Talent Contest and the May Day Picnic. We've also celebrated the ordination of Rowlands Castle resident Annie McCabe and the recognition of Alan Drinkwater's outstanding contribution to the life of the village.

As a member of the Diamond Jubilee organising committee, I was incredibly impressed by the commitment and generosity of village people and organisations. People really made an effort for the procession and shop displays, not to mention the cakes – what a creative village we are! It has been estimated that well over 1,000 villagers participated – either watching or taking part. I had a real sense of the community of Rowlands Castle celebrating together. Thank you to everyone who was involved.

The celebrations aren't over yet – the RCA is celebrating our fortieth anniversary this year with a party on 22nd September. We are lucky enough to have Andy Clifton, the Head Chef from The Castle, to produce a sit-down meal, and Bim Verrecchia and his band will provide the live music. We will be decorating the hall on the morning of 22nd September if anyone would like to come and help.

We anticipate that tickets for the party will sell fast. We're particularly keen that everyone who has been involved in the RCA, especially past Committee members and deliverers, should have an opportunity to buy tickets. If this is you, please email me: chair@rowlandscastle.com or phone 023 9241 3143, as soon as possible to make sure that you are on the list!

We would also love to have photos of past committee members. If this is you, could you send or lend us a photo of you at about the time you were on the committee? Any other memorabilia or archive materials would also be great. Please contact me if you have any.

Request for help. We need some more deliverers for the Village Magazine. Could you deliver the magazine three times a year in Finchdean Road? We also need back-up deliverers – e.g. when the normal deliverer is away on holiday. Would you consider volunteering for this? We also need people to collect subscriptions. We ask for a donation of £2 per household, and normally do this at about the time that this edition of the magazine comes out. Would you be able to knock on the doors in your street? It's a good way to meet and say hello to your neighbours. If you can help with any of these, please contact our magazine co-ordinator, Martha Dombey on 9241 0030 or Martha@widley18.orangehome.co.uk

I look forward to seeing some of you at our party or on bonfire night, and hope that all of you enjoy the rest of the summer.

Rowlands Castle Association

Your RCA Committee



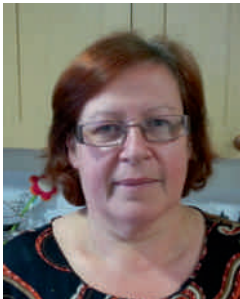
Catherine Billam (Chair)
9241 3143
chair@rowlandscastle.com



Kevin Connell (Treasurer)
9241 3857
treasurer@rowlandscastle.com



Sue Connell (Secretary)
9241 3857
secretary@rowlandscastle.com



Sharon Broom
9241 3592



Martha Dombey
9241 0030



Fiona Charlesworth
9241 3865



Mike Winn
9241 2704



Gillian Lovegrove (Webmaster)
9241 2426
webmaster@rowlandscastle.com



Richard Milton (Editor)
9241 3292
editor@rowlandscastle.com

RCA 40th Anniversary



ROWLANDS CASTLE ASSOCIATION

Party 22nd September

Put the date in your diary

To celebrate the RCA's 40th Anniversary (1972—2012) we are holding a Grand Dinner, Dance and knees up at The Parish Hall, Rowlands Castle, on the evening of Saturday 22nd September.

There will be a 3-course sit-down meal, music provided by Rowlands Castle's own Bim Verreccia and his band. Food will be cooked by The Castle's brilliant chef, Andy Clifton. There will be fun, dancing and surprises, all for only £25 per ticket.

This will be an event to remember and is already attracting lots of attention - so book early to avoid disappointment.

Tickets will be on sale soon and will be announced on the Grapevine and the RCA noticeboard.

East Hampshire Volunteer Award

Alan Drinkwater honoured with award by Richard Milton

RCA President Alan Drinkwater was honoured at the East Hampshire Volunteer Awards held at Chawton House near Alton in June. Those recognised were people in East Hampshire who had devoted significant time and effort to volunteering for the community.

Alan was a County Councillor from 1985 to 1997. He contributed to the Rowlands Castle Parish Plan in 2008 and was a member of the South East Regional Committee of the Council for the Protection of Rural England which worked on the South East Plan and where he chaired the CPRE SE Transport Group.

Alan's involvement with the RCA dates back to 1997 when there was a need to provide some mechanism or person to help revive the RCA. He was invited by Chris Cochran (then RCA Committee Chairman) to become the first President partly because of the experience gained during his three terms of office on the County Council.

Says Alan, 'May I thank you all for putting forward my nomination as an 'Outstanding Volunteer' for the East Hampshire Volunteer Awards. I enjoyed the award ceremony at Chawton House. It is always agreeable to be recognised for something that you have been involved with. So this is no exception.'

The awards were organised jointly by Community First East Hampshire and East Hampshire District Council. Award certificates were presented by The Dowager Countess of Clarendon and Councillor Pat Seward, Chairman of EHDC. Some 37 volunteers from across the county were honoured, from organisations as diverse as National Trust, Alzheimer's Society and Hampshire Search and Rescue.

Alan Drinkwater is congratulated by RCA Chair Catherine Billam on receiving his East Hampshire Volunteer Award at The Great Hall, Chawton House Library, Chawton.

Photo: June Earl



May Day Picnic

Weather fails to dampen May Day Picnic by Richard Milton

The wettest weather on record was not enough to stop the Villagers of Rowlands Castle enjoying their traditional May Day picnic.

The Blendworth Brass Band adjourned to The Fountain Inn where they were welcomed by Sandra Kinge. Picnickers were able to buy pints and enjoy hamburgers cooked in the shelter of the coach passage. Village Flagmistress Barbara Openshaw who organises the Picnic each year on behalf of Rowan's Hospice bravely braved the rain with a giant umbrella to collect donations, this year raising more than £300.

Above right: May Day picnic organiser Barbara Openshaw collects for Rowans Hospice outside The Fountain Inn undaunted by the rain. Below: right: picnickers took shelter and enjoyed a pint and an 'archway' burger. Below: Sandra pulls pints as the Blendworth Brass Band played inside.

Photos: Richard Milton



Armed Forces Day

Armed Forces Day by Richard Milton

Armed Forces Day was celebrated again this year in Rowlands Castle on Saturday 30th June.

As in previous years, Ex-servicemen of the Royal British Legion and ex-service Villagers paraded on the Green for the service, conducted this year by Rev Trevor Filtness of St John's Church. The service was addressed by Vice Admiral Sir Roy Newman.

Following prayers, Blendworth Brass Band played the Last Post and two minutes silence was observed.

The ceremony concluded with the singing of the hymn Abide With Me, played by the Blendworth Brass Band.

Top right: Vice Admiral Sir Roy Newman addresses the service and prayers were led by Rev Trevor Filtness of St John's Church. Right: the ceremony was attended by ex-servicemen members of the Havant Royal British Legion. Below, ex-service and other Villagers gathered on the Green to celebrate Armed Forced Day.

Photos: Pat Carter



Diamond Jubilee

Village turns out to celebrate Jubilee in style by Richard Milton

It may have been raining in London, but in Rowlands Castle the sun shone, as almost everyone in the Village turned out to enjoy the Jubilee celebrations. More than twenty Village organisations joined the procession that walked from St John's Church, down Redhill Road, up Links Lane, down Bowes Hill and ended on the Green., where the WI provided a sumptuous tea and youngsters were presented with commemorative medals.

The following pages provide just a flavour of the Village's big day that was celebrated by young and old alike. It's estimated that more than a thousand people took part.

Halls Garage showed vintage cars and motorbikes, The Coffee Shop served in style and Herbie Armstrong was sandwiched by Sandra and Rita from Gardening Club. Opposite: Style Studio took the prize for Vintage Style and the "Stylettes" helped display Ted Redsull's bygone photos. The Hardware Store showed vintage mowers and the Village Stores put out more flags. Your Editor was there—but didn't take a single photograph!

Photos: Pat Carter



Diamond Jubilee



Diamond Jubilee



The big parade starts down Redhill Road.

Photos above and right: Mike Tuddenham:

Photo below: David Mitchell



Diamond Jubilee



The parade continues down Redhill road with some 270 people taking part.

*Photos above and below:
Mike Tuddenham*

Photo left: Carol Joyce



Diamond Jubilee

*Photos: (top) Mike Tuddenham, Pat Carter and (bottom) Mark Seaman.
Photos Page 15: Mike Tuddenham (left), David Mitchell, and Pat Carter (bottom)*



Diamond Jubilee



Diamond Jubilee



Diamond Jubilee



The Parade arrives at the Green

Page opposite (clockwise) Mark Seaman, Pat Carter, Mark Seaman and two photos by Mike Tuddenham.

This page (top) Pat Carter, (above) Frances Fawcett, (left) Mike Tuddenham.

Diamond Jubilee

Photos: (top) Frances Fawcett, (bottom left) Pat Carter, (right) Frances Fawcett



Diamond Jubilee

Photos: (top and below left) Frances Fawcett, (below) Pat Carter



Diamond Jubilee



Diamond Jubilee



Photos page opposite: (top) Frances Faawcett, (bottom right) Pat Carter, (bottom left) Sue Connell.

Photos this page (above) Frances Fawcett, (right) Pat Carter, (bottom right) Sue Connell, (bottom left) Pat Carter.



Diamond Jubilee



Mission accomplished!

Page opposite: Girl Power! The women beat the men at Tug Of War.

Photos : (top and centre) Pat Carter, (below) Lorna Hancock.

This page: Mission accomplished.

Photos (right) Pat Carter, (below left) Pat Carter, (bottom right) Frances Fawcett..



Photos: Mark Seaman



The Jubilee celebrations were organised by the Rowlands Castle Diamond Jubilee Celebrations Group composed of residents and representatives from many Village organisations: Sue Arnold, Catherine Billam, Charlotte Butterworth, Dreen Chestnutt, Tony Cowin, Lizzy Gradidge, June Halford, Jane Pickering, Steve Protheroe, Deborah Trollope and Lisa Walker. The Group thanks everyone in the Village for their support and participation.

Local businesses and organisations who contributed to the Jubilee Celebrations included: Asda, Beechwood House, Blendworth Tyres, Caroway, Church on the Green, Circuit Supplies Ltd, Extra Mech Services, Halls Garage, Londis, Martin Steels, NatWest Bank, Neville Lonsdale, NSPCC, Portsmouth Plumbing, Pro Shop at the Rowlands Castle Golf Club, RJD Technology, Rowlands Castle Association, Rowlands Castle Historical Society, Rowlands Castle Parish Council, Rowlands Castle Parish Hall, Rowlands Castle Tennis Club, Rowlands Castle Womens Institute, Rowlands Home Hardware/RJ Winnicott, SAE Projects, Shell Garage, Style Studio, St John's Church, Taste of India, The Castle Inn, The Fountain Inn, The Harvester, The Robin Hood, The Village Cafe, The Village Fair Committee, Verrecchia Ice Cream, Village Vets and Waterloooville Carpets.

Many, many individuals helped to make the Jubilee a success. While it's impossible to name everyone, special thanks go to Pat Carter, Kevin Connell, Trevor Filtness, Jan and Tricia Halliwell, Jonny Higham, Peter Langdown, Gillian Lovegrove, Stuart Meeke, Richard Milton, Sir Roy and Lady Newman, Ted Redsull, Andy Rowley, Bim and Katie Verrecchia, Ken White, the Police, ACSOs, PCSOs who attended, all who took part in the parade, acted as Marshalls or helped set up and clear away after the various events, and Mr and Mrs Rae for hosting the firework display in Deerleap.

Rowlands Castle Diamond Jubilee

Commemorative Photo book



Following the very successful celebrations of the Queen's Diamond Jubilee in the village, the organising committee have joined forces with the photographic club to create a photo book to remember the event.

The book will go on sale in the Village stores in the Autumn and the guide price is £5.00. All profits will go towards a permanent commemoration of the day in the village

To help gauge demand please register interest by sending an email to RCDiamondJubilee@gmail.com

Donations to the fund are still most welcome and if you would like to contribute please contact our treasurer Dreen Chestnutt at 22 The Fairway or on 02392 412754.

Village Fair

Superb turnout for Village Fair despite rain by Jon Higham, Village Fair Committee

Despite the weather there was a superb turnout for the annual Village fair in Rowlands Castle last Saturday. The faithful village Green soaked up the rain and didn't complain!

George Hollingbery MP braved the elements and opened the Fair at 11.00am. This was followed by a children's fancy dress competition based on a sporting theme. Amongst the entrants were a Zara Phillips, an Olympic Torch runner and Maria Sharipova! Everyone went away with a prize, even a couple of unlucky entrants who were caught out by the early start. Well done to the children and Mums and Dads who entered!

There was a full turn out of stall holders both inside and outside the marquee offering everything from craft stalls, bee keeping, tea rooms, cake baking, homeware, traditional sweets and the Scouts coconut shy amongst many different offerings. They all made a really good effort and hopefully went home happy!

George Hollingbery MP opened the Village Fair, with Village Fair Committee Chair, Amanda Macari.

Photo: Graham Croker



The big wheel kept turning and gave visitors a great birdseye view of the village green and luckily was below the cloud cover! Sensibly the bouncy castle had its own cover and the traction engine gave rides up and down the side of the Green all day. Steam blowing into the air! There was a great turn out of rides and there were lots of riders despite the rain!

The Tug of War was narrowly won by Tony Smith and his team from the Castle pub 2-1 against the members of the Fair Committee. They did have the advantage of organising superb matching T-shirts and the luxury of practising before hand. So well done to Tony and his team for making the effort!

For the grown-ups there was the bar staffed by volunteers which was busy all day and night offering beer, wine and Pimms etc with plenty of Gazebos procured from villagers to keep everyone dry. The hot food stall did a fantastic array of locally sourced produce including quality burgers, hot dogs, salads and in the evening a wonderful hog roast and vegetarian chili.

Village Fair

The evening kicked off with people coming to the 'Take all That' concert in the marquee. A rapid transformation occurs as all the stall holders pack up and rows of large tables and chairs are set up with a stage, lighting and dance area. It was amazing that despite the rain, the evening visitors had dried off and dressed up to enjoy the evening! At 9.00pm 'Take all That' took to the stage and 400 people went crazy and danced non-stop for the next two hours. The group did a great tribute act and the fantastic response of the crowd showed how much they enjoyed it. From the first bars of the first song the dance area was packed.

The day time Fair is a very tradi-



George Hollingbery chose the winners for the fancy dress competition—this year's theme was 'Your sporting hero'.

Photo: Graham Croker



tional fair aimed at the youngsters and families. The prices are kept low and subsidised by the adults using the bar and paying for tickets for the evening entertainment.

All the Fair Committee are entirely voluntary and spend much of their time organising it during the year and setting up in the week before. It takes a great deal of effort but the social aspect of being involved and the eventual day is what makes it all worthwhile. All profits are then ploughed back into village projects and to pay for next years event. If you would like to join the Committee please come and see us. It really is a great way to get involved and put something into the community. Whatever your skills, please get in touch.

Village Fair



Above: ice creams and umbrellas. Right: swinging in the rain. Below right: the human fruit machine defies the elements. Below: a soggy ride in the teacup. Opposite page: the big wheel was a hit again and some hardy souls went for a ride in the rain.

Photos: Graham Croker



Village Fair

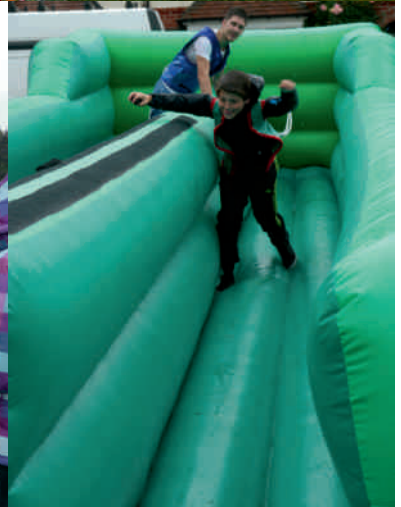


Village Fair



This page: Umbrellas were the order of the day for many visitors but the games and the fun went ahead. Page opposite: there was no shortage of the visitors to the marquee. The entertainments, the competitions and the dog show took place as usual.

Photos: Graham Croker



Village Fair



Village Fair



Spectators—both human and canine—were enthralled by the sports events programme which went ahead as scheduled, ending as always in the titanic struggle that is the Tug O War between The Castle and the Village Fair Committee.

Photos: Graham Croker



Another great Fair—thank you guys!

by Richard Milton

Will it ever stop raining? Well, no actually. For the first time in 17 years, it poured all day. But visitors to the Village Fair put on their anoraks or put up umbrellas.

There may have been a few less people on the Green than in past years, but there seemed to be just as many taking part in the games and events. And just as many passing through the marquee supporting the horticultural show and photographic competition.

As every year, the Village Fair was a triumph of organisation for our Village Fair Committee but this year—with the wettest conditions on record—they really pulled out all the stops to make this event a rip roaring success. Here's three very loud cheers and doubles all round for the Committee!

Photos: Graham Croker



St John's Summer Fair

St John's Fair defies weather forecast by Sue Arnold, Chair, St John's PTA

Saturday 16th June turned out to be a very blustery day but it did not stop parents, pupils and villagers supporting St John's School Fair. The fair was opened by the extremely talented Wind and Jazz Bands from The Petersfield School. For the rest of the day crowds were kept entertained by bouncy castles, Mini Olympic games, varied art and craft stalls and the ever popular raffle and tombola's. We have not yet finished counting the profits but are sure that it has been a bumper year and will be contributing towards our Outdoor Play Area project. Thank you to everyone who helped to make the day such a success.

Clockwise: Martha Dombey, the Barbecue Dads, Cupcake decisions, , Pat and Rita take a rest from selling plants, Mrs Woolley and the Year 4 Ukele Band, Year 5 Human Fruit Machine.
Photos: Richard Milton



St John's shows it has bags of talent by Richard Milton

A wide ranging display of talent was on show at this year's St John's School's talent show. Following last year's highly successful production, the PTA staged acts from every year including dance, singing, playing musical instruments and even skipping and a magic act.

The judges (right) Natalie Voller, Bim Verreccia and Catherine Billam, had tough choices to make from among so many good acts (Bottom).

Among the most colourful were Lily Mae Povey, Freya Shaw, Caylee Heath and Kayla Tait of Year 4 (Below right).

Other highlights included Holly Urquart playing the piano, Nicole Gray's magic act and Molly King's skipping routine.

After deliberating for some time, and commenting on the quality of all the acts, the judges awarded the prizes to Lottie Goringe and Bryony Scattergood of Year 1 for their act as Ashley and Pudsey, and to Sophia Pulizzi of Year 5 for her beautiful singing (pictured below right).

Photos: Richard Milton



Rowlands Castle Tennis Club

Famous People at the Tennis Club by Mark Cooter, Chairman, RTCT

To celebrate the Diamond Jubilee the second Rowlands Royal Tennis Tournament was held. Over 30 members played in the Fun Doubles where a handicap system was used to make the pairings as even as possible. We welcomed members who had never played in club tournaments before as well as some seasoned members who always feature. The age range was vast going from some juniors at 15 to some of our senior players in their 80's. There cannot be many sports that entertain such a wide demographic!

John Marengi (last year's winner) once again made it to the final with his new partner Sue Jackson, but this time they were beaten by the young upstarts Jack Harpur and Maria Wren!

We were also once again delighted with a couple of surprise guests to present the prizes, finding time in their busy schedule, hot off the boats!

The tournament also formed part of the village's diamond jubilee celebrations, with picnics and a BBQ on the rec after the tournament. The Tennis Club took part in the walking

procession on Jubilee Saturday with a selection of members parading in 1950's gear and sporting wooden rackets as used at the time of the coronation. We also welcomed many famous players and ex-players from the world of tennis. See if you can spot the famous player from Rowlands!



Maria Wren, their Royal Highnesses Jack Harpur. Below, Club Members took part in the Jubilee Parade.



Fair play award for Castle United by Stephen Crooks

Castle United Youth Football Club has been awarded the Club Fair play award for 2012 by the Portsmouth Youth Football League.

The award was for the club in the league that had the highest average mark awarded over the season by other member clubs.

Youth club secretary, Gary Clark was there to receive the award along with a cheque for £250 from the League's chairman Ken Adams.

Gary commented "that this award was in recognition of the club's good behaviour and sportsmanship throughout the season and everyone associated with the club could be justifiably proud " He added "That was marks out of 10 given by opposing teams about us at the end of every game and collated by the league at the end of the season and to be recognised as such by one's peers is indeed an honour"

The club is still looking for players in our under 8 and 11 age groups for next season and if you have a child that is keen to play football in a caring, sporting environment and be coached by FA level one coaches then please contact Gary for more info.



Castle United Under-13 side. The Club has been awarded the Fair Play Award for 2012 by the Portsmouth Youth Football League.



Gary's telephone number is 02392 780017, Mobile no; 07886459282 or email garyatcastle@yahoo.co.uk.

Castle United Under-15 Side. The Club is still looking for players for its Under 8 and Under 11 age groups for next season.

Cricket

Season finally under way

By Jonathan Law, DACD CC

At the time of writing in mid June our 4th season at the Rowlands Castle recreation ground is now in full swing. The (un) seasonal weather during the spring meant the square was initially too dry for the pre season rolling in March. We then lost our first 5 games both home and away to the rain in late April early May.

The season finally got underway in mid May with a hard fought victory over our local rivals Clanfield, where we successfully defended a score of 99 to win by 3 runs. This was followed by a draw against East Meon and a win against DSTL over at Southwick.

We finally played our first home match hosting Buriton at the end of May. A well prepared pitch under a hot sun saw DACD post a total of 200 and then dismiss Buriton for 80 odd. A midweek win over Portsmouth Academicals was followed by our first defeat of the season to Allstars. Our next game saw us host Lavant for the first time and after several attempts at their ground we finally secured a win. A slow pitch due to more incessant rain meant that DACD crawled to 111 all out. However after one of our legendary(!) teas we bowled out Lavant for 67.

By the time this article is published we will have returned from our 25th Anniversary tour to Belgium. We are combining games in Ghent and Brussels with visits to Agincourt, Waterloo and Ypres.

Hopefully, the weather will enable us to complete the majority of our fixtures. We are playing our first game on the Isle of Wight against Brading in August and finish on 22nd September with our traditional season closure away to Lavant.



How children celebrated the Jubilee by Kay Pennicotte-Henrie, Headteacher

The children at St. Johns CEC Primary School will have many memories of the Queen's Diamond Jubilee.

On May 31st the older children visited the village and were treated to talks and exhibits about life sixty years ago. They were particularly impressed with the gramophone at the church.

In the afternoon our special 'more mature' guests arrived to share in our 'Jubilee Tea Party', (alias the PTA in masks) and waved to all the crowds. We were pleased that some villagers with memories of the Coronation were able to attend.

The children were most fortunate to receive two keepsakes of the Jubilee; a special edition of the 'New Testament Bible', which includes pictures of the Queen's life; this was given by St. Johns Church and a Commemorative Coin bought by the Parent Teacher Association.

One child has told us that she has made a special 'Diamond Jubilee' box to keep her mementoes in safely.

The children continued to enjoy the celebrations during the weekend in the village. They sang heartily in the procession and enjoyed all the games on Sunday.

Thank you to the Jubilee Committee for involving us in your events; the children of Rowlands Castle should have very happy memories of the Queen's Diamond Jubilee.



St John's Church

End of a hectic first year

By Rev Trevor Filtness, St John's Church

For all of you who are short of things to do, I would urge you to have a go at being a Vicar of a Parish like Rowlands Castle! Until a year ago I used to think that the Royal Navy and business were adept at filling in every corner and moment of life, but that was before I came to Rowlands Castle!

Now before anyone thinks that this is a complaint I would like to assure you that you would be completely on the wrong track. I can hardly believe that I am almost at the end of my first year in the Parish, such has been the pace; I don't think that my feet have touched the ground since being licensed. As well as a lively and active church and congregation, there is so much that happens in Rowlands Castle that I suspect that a 'lifetime will not be enough'!

But this is good news. I can only highlight the wonderful Jubilee Celebrations as an example. Congratulations to all the organisers and participants who had the imagination and skills to put together such a memorable celebration. There was a real sense of celebration, occasion and enjoyment such that you can only find in an English village and it was good to join in all that went on. Thank you.

One of the delights of village life this year has been the opportunity to hold public worship on the Green, along with our fellow church family from the Church on the Green. On Good Friday, Easter Sunday and also at the Diamond Jubilee Weekend, many from around the village were able to worship together with us on the Green. We were very grateful too for the generous provision of refreshments in the Church on the Green afterwards. Hot Cross buns straight from the oven were a treat.

At the Jubilee Service we were joined by John Pickering, the Chairman of the Parish Council, who spoke of the way our Queen has led the country over the past 60 years, and the part her faith has had in that. We were reminded of the fact that Jesus Christ himself took the form of a servant. John drew attention to the fact that Jesus said whoever wants to be a leader must learn to serve. Jesus set the example to his disciples, even washing their feet, and the Queen has also modelled her leadership role on this dedication to the service of others. We understand she was brought up by her father to read a chapter of the Bible each day, and still prays each night. Her life of dedication and quiet Christian faith are an example to us all.

One of the ways in which we were able to mark the Queen's Diamond Jubilee was with the distribution of some special Jubilee New Testaments. These have a few pages of photographs, facts and quotations from the Queen, including her comment in last year's Christmas Message along the lines that God sent not a general, nor a politician

St John's Church

but a Saviour to the world. Our needs have not changed, and that Saviour, the Lord Jesus Christ, is still alive and able to meet our needs.

Jubilee Bibles were offered to all the school families, young families attending the Monday Blue Moon Cafe and Little Fishes music group. Lots were taken as souvenirs for children, grandchildren and godchildren by those attending the service on the Green in June.

We were delighted when Head teacher Kay and her dedicated team gave up a Sunday morning to bring a lovely group from the school into the church to celebrate a special day earlier this year. The school choir sang a couple of songs, and also enjoyed the inaugural sketch by our new puppet team. Keep your eyes open for more such events!

On the personal front, I find I still have much to do to get know everyone, but it is a delight to have even passing conversations and gradually to get to know you all. Please do remember that you can speak to me or my colleagues at anytime and that I am always ready to visit if you would prefer. Although it may be something of a caricature, there is however more than a little truth in: 'More tea Vicar'! Please remember that if you cannot reach me for some reason, do contact our Church Office.

Thank you all for such a dynamic, eventful and welcoming first year in the parish

With every blessing, Trevor

**Rev Trevor Filtness, Associate Vicar, St John the Baptist, Rowlands Castle
07785 568056, 02392 410111 (Office)**



A hectic year for St John's Church, Redhill Road.

Photo: Richard Milton

Church News

Annie McCabe ordained in Portsmouth

by Catherine Billam, Chair, RCA

On 30th June, Redhill Road resident Annie McCabe put on a dog collar and a long white robe and joined eight other people to become ordained Deacon by the Bishop of Portsmouth, the Rt Rev Christopher Foster, at Portsmouth's Anglican Cathedral.

The cathedral was so full that it was standing room only. The congregation included a large contingent from Rowlands Castle, who had come to support Annie. After the ceremony, Annie's friends and family gathered at St Johns Church Hall for a celebratory reception.

Annie, who has previously worked at Havant College and for the charities VSO and Tearfund, has spent the last two years studying full time at Ripon College Cuddeston outside Oxford.

Being ordained a Deacon in the Church of England is the first step to becoming a priest. As a Deacon, Annie can take services, funerals and baptise people. After another year, she can become ordained as a priest after which she will also be able to take a service of Holy Communion.



Right: Annie is pictured outside Portsmouth Cathedral with the Bishop of Portsmouth, the Rt Rev Christopher Foster.

Photo: Graham Mitchell

Opposite page: Annie is greeted after her ordination by her friends and colleagues from St John the Baptist Church, Rowlands Castle.

Photo: Peter Langdown



DO YOU HAVE?

A tried and tested family recipe?

If yes, then we would love to hear from you.

St John's Primary School would like to publish a recipe book as fund raising for their Outdoor Learning Project.

To get involved couldn't be easier...

Find your favourite recipe (or recipes, you can send us more than one). It does not have to have been passed down, but if it is out of a cookery book, please could you mention which book and author. Pop your name on it and either email your recipe to Clare Garland (cjg@purplechoc.co.uk) or hand it in to Ruth Butler at 7 The Green (black gates between the Hardware Store and Londis).

Then we will do the rest. The recipes will be baked and tasted and the best ones will be included in the book, complete with a family mention. The book will be on sale for Christmas.

Categories include: brunch & lunch; afternoon tea; nibbles & starters; mains; puddings & desserts; baking.

So we can get cooking, the closing date is 1st of September 2012.

Montessori School

Montessori School holds first Summer Fair by Charlotte Butterworth, Chair Montessori PTA

On Saturday 2nd June the PTA of the Village Montessori Nursery in Rowlands Castle held their first Summer Fair. The fair was coincidentally booked for the Jubilee weekend so parents and staff thought it only appropriate to commemorate the occasion with a children's tea party in a traditional street party atmosphere.

A small marquee in the garden of the Parish Hall was the venue and over 65 children enjoyed a full tea party with some of the food being kindly donated by local businesses, such as the Castle Pub and the Village Store (Londis).

Children and parents alike seemed to enjoy soaking up the happy atmosphere and the WI children's bake off competition added an extra bit of sparkle to the event. The gift and goodies fair in the large and small hall, and the games in the garden were all a real success, and we welcomed many hundreds of people throughout the day.

Thanks to all those involved the PTA raised just over £1,000 for the nursery which could not be more welcomed. The Village Montessori Nursery is a small (albeit fast-growing!) organisation which is really enjoying being part of the Rowlands Castle community. (It was established just over a year ago and already has 20 children attending with more starting in the Autumn term.)

The Montessori method was developed at the beginning of the 20th century. At the core of the approach is the idea of 'help me to help myself'. Maria Montessori believed in the importance in providing children with knowledge and understanding to do things for themselves as well as helping each other. Here at the Montessori in Rowlands Castle the children are encouraged to be independent and learn through physically exploring concepts and ideas that spark their interests in their own time and in a range of ways.

The children are encouraged to become self-motivated, and have access to explore materials and really develop a sense of discovery and joy, for their work and achievements. The approach attempts to develop a child's ability to reach a real sense of concentration which is so important for starting school.



If you would like to know more about the Village Montessori please contact Mrs Jenna Manhire on 07825290124.

The Church on The Green

Being two faced?

by Ken White, Presiding Elder

One glance at the clock on the church tower in the centre of the village will tell you that it is two faced in more ways than one! For well over a year now it has been telling a different time on each face of the clock. You would think it would be a simple matter to put it right. Not so!

First of all it is a hands on job requiring a very delicate approach! The tiles on the roof of the church unlike the boots in a popular song of some years ago are not “made for walking”! Some time ago now we thought we had solved the task which seemed to be bedevilled with problems out of all proportion to its size, when the question of Health & Safety arose. Who mentioned it? Well I suppose it was right and proper to do so!

Who knows, by the time you read this you might wonder if you are reading an old magazine because it is job done! There again you might not! We have tried hard to resolve the issue, honestly!

By the way that has set me thinking about clock faces! I remember tucked away on the edge of Dartmoor is the pretty village of Buckland in the Moor. If you look at the face of the church clock you will find letters not numbers that spell out My Dear Mother.

That may be a very sentimental message but one that is more sobering is on the face of the clock of the church in Ilfracombe in north Devon where it spells out “Its time to seek the Lord” .



A problem in ecclesiastical horology. Getting both faces to tell the right time requires a delicate approach—and involves Health & Safety.

Photo: Richard Milton

Letters to the Editor



Sir, I welcome the opportunity to respond to the letter by Catherine Tyrrell, in the Spring copy of the RCA Village Magazine. Whilst I recognise her concerns the views expressed need to be balanced so that readers can form an informed opinion. No public footpath has been closed or obstructed and records at the farm show that a very small number of walkers have, over the years, been asked to return to the correct designated public footpath, located lower down the field. Despite this reasonable request, a few walkers (mainly from Finchdean Road) choose to ignore the situation often cutting the barbed wire fence at the top of the field in order to continue or cut through to the Stansted Estate. This poses a real threat to bio-diversity, causes soil erosion, is dangerous for livestock and ultimately leads to conflict between farmers and a minority of walkers causing widespread mistrust. We welcome the vast majority of walkers who enjoy our farm, the diversity of landscapes it offers, in a responsible manner (respecting the way-markings and the published OS plans and other published routes such as the Staunton Route maps set out by Hampshire County Council - see web sites for details). Surely it can not be in the interests of Rowlands Castle community to force farming businesses to enclose public rights of way in order that they can protect against walkers falsely claiming unimpeded access, especially where these additional paths are a mere 50 metres away, purely to secure a better view. These fields have been entered into a range of environmental stewardship schemes, designed to enhance and protect bio-diversity in the area. Over the last 18 months we have worked with Natural England to balance the interests of our business and preserve the landscape of this valuable asset. We have re-fenced almost 7 km of field boundaries at considerable expense in order that our pasture land can be 'conservation grazed' under guidance from Natural England. It is wholly inaccurate to suggest this "grazing is likely to irreversibly damage this beautiful wild-flower meadow". Furthermore, we have installed 4 out of a total of 11 proposed 'kissing gates' to help improve public access where existing stiles are difficult for dog walkers (the others will be installed by Summer 2012) and it must be remembered that our farm has the highest ratio of footpath distance to farmed area in the local area.

I am pleased that the RCA will give me an opportunity to respond before this matter escalates as it is our wish to work with our community. But it is only reasonable that our business needs are taken into consideration too.

**Kind regards,
James Fawcett
Drews Farm**

Letters to the Editor

Sir, Having been co-ordinator of the RCP LCA Group for the past nineteen months, it is with considerable regret that I have now withdrawn from the Group during the late stages of approving and finalising the LCA for publication.

A major problem since the election of the current Parish Council in May of 2011, is the difficulty experienced in working with the Council. Offers have been made to brief Council members on the LCA, but they have been ignored. The briefings would have helped Councillors understand better the nature and content of the LCA. The last formal presentation to Councillors was limited to five minutes.

A meeting of the Full Parish Council on 11th June did not approve the 'final draft' LCA. While praising the draft, more work was called for recognising "how the LCA might aid/guide toward development of a Neighbourhood (Development) Plan".

Failure to approve the LCA means that the document is not a 'material consideration' when EHDC or SDNP respond to planning applications or develop planning policy. So the Parish loses an additional means of protecting those aspects of the countryside and landscape about which residents have indicated that they care.

Other members of the LCA Group are continuing discussions with the Parish Council. I am grateful for their support in the past, and wish them well in their efforts to achieve approval and publication of the LCA.

Alan Drinkwater
(Former) LCA Group Co-ordinator
The Peak

PS I will be happy to provide an electronic copy of the 'final draft' LCA to those residents who request it. (Please note that because of confusion caused by the two terms 'assessment' and statement' (LCA v LCS), the LCA Group have reverted to use the title of 'Assessment'.)

We want to hear from you.

Do you have something to say? The RCA Village Magazine belongs to the whole Village. And serves as a channel of communication between Villagers. If you have a point of view, write a letter and we'll publish it.

Simply write to Editor, RCA Village Magazine, 3 The Green Rowlands Castle, Hampshire PO9 6BW. Email to editor@rowlandscastle.com

Good Neighbours

Award for Sonia Teale

by Ian Hewitt, Chairman, Good Neighbours

The Good Neighbours AGM was held on 17th April. We were grateful for the support of the RCA (Sharon Broom), St John's Women's Fellowship (Mair Adams), Lunch Club (Vi Anthony) and Church (Bob Raley) – as well as guests from Clanfield and Hordean. Mary Mitchell, the county Good Neighbours Support Services (GNSS) coordinator, presented certificates for over 5 years' service to Jean Berks, June Birch, Diana Ford, Cathy Palmer, Owen Pike, Sylvia Tomkinson and Vera Whitlock and for over 15 years' service to Ken & Vi Anthony, Gwenda Brewer and Rita & Martin Roebuck.

Rita Tayler and Jim Berry have retired as volunteers but Jim continues as Treasurer. Diana Szelke retired from the committee but Christine Funnell has kindly agreed to join. New volunteers are Chris Churchley, Tom and Margaret Anderson and Valerie Coombe. Ian Hewitt has taken over as chairman from Sonya Teale.

On the committee are: Ian Hewitt, Owen Pike, Sheila Johnson, Jim Berry, Gwenda Brewer, Joan Drinkwater, Lyn Elliott, Christine Funnell and Martin Roebuck. In March, Ian and Jill had the pleasure of accompanying Sonya and her guest, Chief Co-ordinator Sheila Johnson, to the County Award ceremony in the magnificent Great Hall at Winchester. Sonya received an award for her GN work. The citation had to be 40 words or less. (4,000 words might just about cover all that Sonya has done.) . *“As Chairman, Mrs Teale was an unfailing source of encouragement, support and wise counsel to the chief coordinator and volunteers, earning everyone's respect for her firm yet gentle management and support to all involved. She continues as a volunteer.”*

Thank you, Sonya, for keeping the organisation in good health and good spirits. During the year there were 221 actions for 34 clients driving over 2,500 miles. 90% of the trips were for medical/health reasons, the remainder for shopping (19 trips) or social (6).

Being a Volunteer is easy. It need take only 1 hour per month and is always entirely at your convenience. For more details contact Sheila Johnson (9241 2705) or Ian Hewitt (9241 2941). And finally – if you know of anyone who may need help - for example, with:

- Transport to hospital, or library, or to go shopping
- Collection of a prescription
- Transport to a club or social event
- Some company for a chat, or to play a game
- Walking a pet, or any other neighbourly activity

then please remind them of our help line - 0845 519 6641 and ask them to give at least 48 hours notice (if possible) of their need – particularly at weekends.

Don't put off making a will

by Ian Oliver

Often the subject of making or updating our will is one we are unwilling to confront and gets pushed to the bottom of our 'to do' list. This is, perhaps, understandable as no-one likes to think of their own mortality.

However, financial and personal family circumstances are prone to change. Ensuring you have made a will that is up-to-date and truly reflects your wishes will give you peace of mind that your loved ones will be looked after once you have gone.

A will is a legal document and mistakes, even seemingly tiny ones, can cause problems and lead to lengthy, distressing and undignified disputes between family members. A well-written will should be unambiguous and offer clear directions about the future succession of an estate, including properties, investments, artworks, jewellery and other assets. It is also the document in which you would name guardians for any children under the age of 18.

Remember, if you die without making a will, your estate will be distributed in accordance with the intestacy rules which may be very different to what you would have wanted.

Another thing you may not have thought about is what happens if you, through illness or accident, lose the capacity to manage your affairs. Unless you have put in place a Lasting Power of Attorney (LPA) you may find that your next of kin is forced to make a lengthy and expensive application to the Court of Protection to gain the necessary authority to deal with your affairs. With an LPA in place the trusted person you have chosen will be in a position to take decisions about your finances, health and welfare and answer questions regarding whether or not you wish to receive life saving treatment.

And here's something else you may not have thought about. Nowadays an increasing number of our possessions are stored digitally, online –including photographs, books and music. If you do not include provision for these, sometimes valuable items, in your will there is a risk that they may be lost forever.

Don't delay - once you have written or updated your will you can relax in the knowledge that your affairs will be dealt with just as you would wish them to be.

If you require any further information or a home visit to discuss the next step, just contact me on 07850 644908.

Domestic heating news

Three helpful homeowner tips

By Nic Radcliffe

Hello. In this article I have three items from the heating, plumbing and solar panel world that might be of help to you.

First I surprised my parents recently when I told them that drinking water from the bathroom tap isn't a great idea. This might apply to you too. The reason is that in most houses the bathroom taps are fed from the cold water tank in the loft. This water could have sat there for a few days or worse, if the tank has no lid, dust or other objects could have dropped in and tainted the water. So my advice is to get your drinking water from the kitchen tap as it is fed directly off the mains. Even better in our hard and chalky water area, fit a filter. There is no comparison in the taste of the water.

Second, I want to offer free support to those of you with boiler breakdown cover. I've had a number of you get in touch since my earlier article quoting The Guardian's advice that *'If you can find a good, trustworthy local plumber, this has to be the best option.'*

The most common stories are from people being told that a part is needed and it'll take a week to come or it's no longer available. If this does happen to you, feel free to get the part number from the engineer and give me a call. I'll be happy to let you know whether the part is still available and how quickly it can be had – 99% of parts I need I can get within 24 hours.

And finally definitely one to be aware of. The Guardian recently reported that *'Thousands of households that agreed to rent their roofs to solar panel companies, in return for free electricity, could find their properties are unsaleable.'* In short, they have uncovered that it can be very difficult to remortgage if you go this route. Far better is to go the buy-it-yourself route. You can read more at *How Solar Panels dim Mortgage Prospects* on The Guardian site.

I hope this has been helpful. If I can help you at all, please give me a call on 07905 908143.



Work starts on drainage by County Councillor Sam Darragh

Greetings.
With the constantly changing weather the past few months I have been concentrating on drainage issues and flooding around the village. Ironically on the day of the worst flooding that affected Castle Road/ Redhill Road was the day drain improvements were due to start. These should be completed shortly.

If residents are concerned about blocked drains please do contact me and I can request that they are cleaned.

The Keydell nursery application consultation ends soon (probably before this prints) but I have been taking note of residents concerns in regards to the traffic and highways implications. This is very helpful for my own discussions with our highways department and something I am monitoring closely.

In my previous articles I have reported on my progress with installing additional parking bays on Manor Lodge Road to ease parking for residents and visitors of Kings Way. This is progressing however due to issues regarding sight lines coming out of Mallard Road we are now exploring extending the existing parking bays instead. I think this will offer a better provision and could also help address some of the flooding issues and access for the disabled.

If anyone wishes to contact me about any of these issues or any other they have, please do so.

Sam Darragh
Sam.Darragh@hants.gov.uk
02392 592072



We want to hear from you

All contributions to the Village Magazine are welcomed . If you have something to say or to share with your fellow Villagers, then please contact Richard Milton, Editor, at 3 The Green, Rowlands Castle, PO9 6BW, 9241 3292, or email editor@rowlandscastle.com

District Council News

Planning applications are foremost by District Councillor, Marge Harvey

I would like to start this report by thanking everyone who helped to put together the Diamond Jubilee celebrations in the village. It was a great time and wonderful to see so many people coming together.

It is a very busy time for me at the moment with so many planning issues happening in the village.

Oaklands has come forward for pre application talks with EHDC, which I can now attend as I am not on the planning committee at the moment. This is very useful because I can put our case forward without worrying about pre determination. I can also say exactly what I am concerned about and if I agree or not, which makes life a lot easier.

I think that we all would like to see this application move one way or the other and quickly!!

The next, and most controversial application is the Keydell application and I have made it quite clear to everyone that I am against this application. It is an enormous building on a green field site and really changes the intrinsic character of Rowlands Castle as you enter from the east. It also will change the rural road into an urban one and we are a rural village. Once we start allowing these sort of applications, who knows what will happen next?

The permission that was given and supported by the Parish Council for the Crematorium in the gap, was not supported by me, as I strongly believe that any building in the gap will eventually be used as a precedent and weakens the case against Keydell as it is adjacent to the gap and at one stage WAS IN THE GAP.

Anyway, I will continue to work on this and hope that you will all turn up at Penns Place when it comes to committee.

The application for Keyline still has to be determined by the officer at EHDC, but having spoken to him recently, it does seem that there are some fundamental policy issues because of the lack of affordable housing in the application.

I am not against this site being developed, but it has to meet all of the planning criteria which it doesn't at the moment. So, watch this space!

I am very pleased to announce that the new facility at Havant will be up and running in December. This will make life a lot easier for all of us and save having to go to QA for everything. I am hoping that there will be information from the Health Authority within this publication, which I would urge you all to keep handy as it should contain helpful information in case of emergency.

I would just like to remind you all that I still have my surgery in the coffee shop in the



village every first Thursday of the month, so come along and share any problems that you may have.

I received many calls from residents during the last serious rainfall and would like to remind you that if you think you are in danger of water coming into your home, then please call the environment team at EHDC on 01730 266551 and request sandbags. I managed to get help for most people who called me, so remember that number!!!

Please remember that I am always available to help and if I can't then I probably know who can, and you can always call or email me and I will get back to you as quickly as possible.

Just as a footnote, I would like to clarify the reason that the previous clerk withdrew from the case against the current Parish Council. She is suffering from breast cancer and has had a mastectomy and was advised by her consultant to reduce her stress levels. I think that the Parish Council knew this was the case and could have been a little more understanding when putting up their notice. Just my opinion as a resident and friend of Jennie Hanman.

I look forward to meeting you all at the village fair and hope for better weather.

Ashley Electricians

Dalkieth, Woodmancote Lane, Woodmancote,
West Sussex PO10 8RD

- Local reliable electrician.
- All electrical work undertaken from sockets to rewires.
- Free visual safety checks & estimates.
- Fully insured & Part 'P' registered.
- Member of Trading Standards 'Buy with Confidence' Scheme.

Contact Ed Ashley on 01243 373195 or 07733 467536

ejashley@tiscali.co.uk

www.checkatrade.com/ashleyelectricians

Checkatrade.com
Where reputation matters



Parish Council News

Jubilee brought Villagers closer together

By Parish Council Chairman, John Pickering

This report from the Parish Council must start with an expression of sincere appreciation to those who organised and those who supported our village celebrations over the Diamond Jubilee Weekend. All the events were very well attended and we believe it has helped to bring many members of our village community closer together. These occasions do not happen of themselves and so our special thanks are due to the Rowlands Castle Diamond Jubilee Celebrations Group members, who responded so enthusiastically to the Council's initial suggestion, and put so much effort in to making the weekend such a success. The Council was also pleased to note the residents of Finchdean held their own BBQ on the Monday which was enjoyed by all who attended.

The Parish was very fortunate that almost all our celebrations took place in the dry. However, we have since suffered further significant flooding in parts of the parish. Clearly this remains a serious problem and some experts warn that it could become even worse as a result of climate change. The Council is seeking an urgent meeting with the relevant authorities to agree on action to be taken. We must be very careful in considering major new developments within the Parish which might exacerbate the problem.

The Annual Parish Meeting in April was well supported. Feedback indicates that the changes introduced to the format of the meeting, including a less formal layout, invited speakers and 'posters' for the reports from our village organisations, were favourably received. We will aim to continue such arrangements next year.

May is the time when the formalities of the previous Council year are concluded. The Parish accounts have been approved by the 'internal' auditor and have been sent to the Audit Commission for ratification. They are also available for public inspection on notified dates. We are also pleased to have been able to release a good proportion of the ring-fenced funds to the Parish Hall to pay for recent urgent roof repairs.

At its own AGM, the Council agreed to return to monthly meetings to improve the decision-making process. It also agreed to scrap its various Committees in favour of informal working groups of councillors, which will address key areas of policy and make recommendations to Full Council. In time, councillors hope this change will allow some significant savings on the Clerk's time by reducing the number of formal agendas, minutes etc that have to be produced. We hope, too, that it will introduce greater flexibility in the way the Council handles routine matters, especially as there will be some devolution of budgets to support the Working Groups. The Full Council will, of course, remain the policy-making body in all areas of its responsibilities.

At the time of writing, we are dealing with the issues raised by the full planning

application by Keydell for the Mays Coppice site. This follows on from the valuable Open Forum at the Council Meeting on 11 June, at which a number of helpful questions were asked and opinions expressed by members of the public. We also anticipate that, following their recent exhibition, Taylor Wimpey will shortly be submitting full applications for approval of their plans for the Oaklands site.

Planning is, of course, but one area of the Council's work and we have a wide range of other issues in hand, particularly concerning the Recreation Ground, traffic, trees and open spaces. A successful litter pick was organised recently by residents in the Finchdean area with the help of EHDC and Steve Protheroe, our councillor for Finchdean.

We are very fortunate indeed to have such an able and committed group of councillors who bring a valuable variety and skills and interests to our work; and not least our very able Clerk, Lisa, who has added so much to the effectiveness of the Council since she joined us last November.

John Pickering

Parish Council wins Appeal against EHDC and Shell UK Products Ltd

The Appeal by Rowlands Castle Parish Council against the grant of a Licence to sell alcohol at the Shell Whichers Gate garage has been successful. The Licence had been granted by the Licensing Committee of EHDC in October last year. That decision has now been overturned by Magistrates sitting in Fareham.

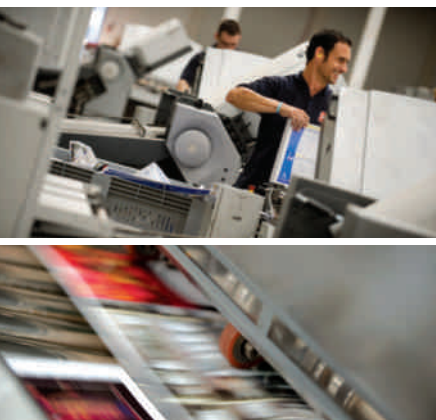
The case concerned the primary use of the Whichers Gate premises. EHDC's Licensing Committee had concluded that this was as a convenience store, but the Parish Council argued the primary use was fuel retailing. The magistrates upheld the Parish Council's arguments and awarded the Parish Council its full costs against Shell UK Products Ltd (Shell).

In their Judgment the magistrates criticised the way EHDC's Licensing Committee had handled the application, and the quality of the data submitted by Shell to EHDC, and during the Appeal process. The magistrates found that the Parish Council's challenge was well-founded and commented that Shell and EHDC should have recognised the discrepancies in the data.

Print. Perfected

As the South's largest commercial printer,
we handle all your print needs:

**Programmes • Brochures • Folders • Catalogues
Stationery • Flyers and much much more...**



**DELIVERIES ON TIME EVERY TIME.
QUALITY GUARANTEED.**



Follow us on Twitter for up to the minute news,
print tips and last minute offers.

Large enough to cope, small enough to care

T: 023 9233 4900
enquiries@bishops.co.uk

www.bishops.co.uk



Print. Perfected



DO YOU NEED ASSISTANCE AT HOME?

AN INDEPENDENT CARE AGENCY

02392 362222

We can provide assistance with all social care tasks including:

All Personal Care Tasks
Domestic Tasks
Sitting Service

Bathing/Dressing
Shopping
Night Sleeps

We provide all the above services in Havant, Waterlooville, Petersfield, Portsmouth, West Sussex and Chichester Areas. Please telephone the above number for further information regarding our services.

Ashley Electricians

Dalkieth, Woodmancote Lane, Woodmancote,
West Sussex PO10 8RD

- Local reliable electrician.
- All electrical work undertaken from sockets to rewires.
- Free visual safety checks & estimates.
- Fully insured & Part 'P' registered.
- Member of Trading Standards 'Buy with Confidence' Scheme.

Contact Ed Ashley on 01243 373195 or 07733 467536

ejashley@tiscali.co.uk

www.checkatrade.com/ashleyelectricians

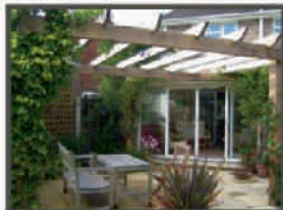
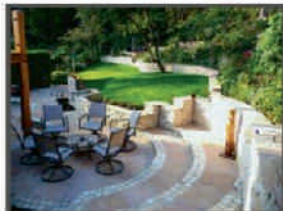
Checkatrade.com
Where reputation matters





**Inspiring gardens....
from concept to completion**

Landscaping • Bespoke Designed Gardens • Planting



Extending your home into your garden

FREE CONSULTATION AND QUOTATION

Tel: 02392 413865 Mobile: 07767 867603

office@charlesworthoutside.co.uk www.charlesworthoutside.co.uk



HEATING • PLUMBING • BATHROOMS

I can help with all your boiler, heating, plumbing and bathroom needs. And I live right here in the village, so can call round at short notice.

**Here's my number.
Please keep it in a
safe place.**

07905 908143





DITCHAM PARK SCHOOL

Where every child is known and valued

TOP OF THE TIMES GCSE LEAGUE TABLES FOR HAMPSHIRE 2012

A co-educational, independent day school for children aged 4-16 near Petersfield, Hampshire

- Caring, family atmosphere
- Small classes and individual attention
- Wide range of extra-curricular activities
- Excellent sports facilities including extensive grounds and sports hall
- Wonderful location on top of the South Downs near Petersfield
- Daily coach and minibus service throughout the area



"The progress made by pupils is excellent"

For further information please contact the school office

☎ **01730 825659**

admissions@ditchampark.com
www.ditchampark.com

fabulous flooring with a perfect fit!



visit our website to find out more... waterloovillecarpets.co.uk

Service is the secret of satisfied customers and satisfied customers are the secret of our 45 year success.

- Fabulous Carpets from Greendale and Brintons
- Crucial Trading Specialist
- Fabulous Vinyl Tiles from Amtico, Karndean & Cavalio
- New Click only Vinyl Tile Range from Victoria
- Fabulous Pergo Laminate Floors with New Designs
- Oak Floors – Engineered Planks and Solid Click
- Fabulous Bamboo & Cork Floors
- 12 MONTHS INTEREST FREE CREDIT on all products



We promise you a flooring that fits your requirements, fits your budget and fits beautifully into your home. Please call in, anytime.

A pleasure to come home to.....

31 The Square, Petersfield, Hampshire Telephone: 01730 262223/267381 Fax: 01730 267394
email: sales@waterloovillecarpets.co.uk waterloovillecarpets.co.uk

*You imagine it,
we'll make it real...*



Specialists in bespoke luxury bathrooms

From design to completion
Attention to detail guaranteed
Come and visit our beautiful showroom
18 Elm Grove, Hayling Island,
Hampshire PO11 9EF

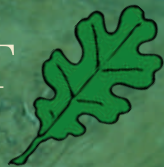
Tel: 02392 466007
www.aqua-ltd.co.uk

Showroom opening times: Mon - Fri 9am - 4.30pm Sat 9am - 12 noon

AQUA
BATHROOMS

Checkatrade.com
Where reputation matters

OAK FURNITURE OUTLET



£299

Quality Imported Furniture

The Very Best Prices

Wide Range Of Stock

Living, Dining, Kitchen
& Bedroom Ranges



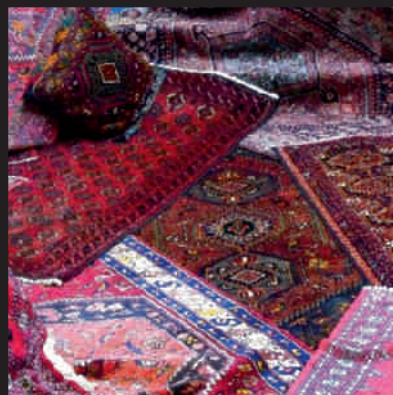
£799

28 North Street, Chichester, West Sussex, PO19 1LX
01243 776811
www.oakfurnitureoutlet.biz

Rug Emporium

100S OF RUGS
IN STORE!

PRICES START
FROM
UNDER £100!

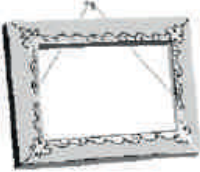


www.rugemporium.biz
www.chantryhouseoak.co.uk



TRADITIONAL,
MODERN
&
HAND WOVEN

28 North Street, Chichester,
PO19 1LX
01243 776811



Petersfield Framing Studios

Picture Framing by Andy Parks, MA, G.C.F.

- ◆ Collection and Delivery Service in the Rowlands Castle area.
- ◆ Guild Commended Framer (G.C.F.) with 23 years experience.
- ◆ Over 400 different mouldings and 200 mount boards to choose from.
- ◆ Very competitive prices.
- ◆ Picture framing tuition also available.
- ◆ Tel: 01730 269926.
- ◆ Visit: www.petersfieldframing.co.uk

"We Collect and Deliver Your Picture Framing"

Why not advertise here?

Local businesses are welcome to advertise in RCA Village Magazine.

It's low cost and your advert will be seen by every household in Rowlands Castle, Finchdean and the surrounding area.

For more information contact

Prue Amner
Advertisement Manager
RCA Village Magazine

Email: adverts@rowlandscastle.com
or phone Tel 023 9241 2459



Where play and learning fit together

Registration Charity Number 1088132
Rowlands Castle St Johns CEC Primary School
Whichers Gate Road, Rowlands Castle,
Hampshire PO9 6BB

OPENING TIMES: Monday to Fridays 8.30am ~ 4.30pm
Ofsted inspected

Early Years Foundation Stage curriculum

For a prospectus, or to arrange an informal chat, please drop in or contact:

LORRAINE BRYANT ~ Manager on 023 9241 2095

St. Johns CEC Primary School



54

ELIZABETH TURNER
PROFESSIONAL
CURTAIN MAKER

CURTAINS, BLINDS OF ALL TYPES, PELMETS
AND VALANCES, CUSHIONS ETC.
TRACKS, POLES AND
FITTING SERVICE
FABRICS, TRIMMINGS
FOR FREE ESTIMATE WITH EFFICIENT AND
FRIENDLY SERVICE

TELEPHONE / FAX 01243 389939

**PROFESSIONAL PLUMBING
& HEATING SPECIALISTS**

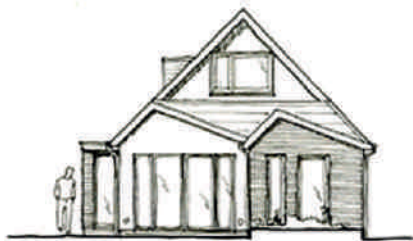
A. A. BARRETT

**51 Hatchmore Road
Denmead
Waterlooville
PO7 6TE**

**Tel: 023 92258057
Mobile: 07802321269**

engineering  **architecture ltd**

integrated building
design



experts in - planning applications
- building regulations approval -
structural surveys - for your home

t: **01730 352800**
e: mail@engarc.co.uk
w: www.engarc.co.uk

**LAVANT HOUSE
CHICHESTER**



- Thriving girls' day, boarding & flexi-boarding junior & senior
- Small classes
- 100% pass rate at 'A' level, all girls off to their first choice universities year after year
- Outstanding pastoral care
- Excellent Sport, Music, Drama & Art
- Flexible bus routes
- Happy girls

For more information, please contact
the Registrar Tel : 01243 527211
Email : office@lavanthouse.org.uk
www.lavanthouse.org.uk



Legal Advice You Can Trust

George Ide LLP Solicitors has a well established and highly regarded private client department which deals with all aspects of Wills, Probate, Trusts, Court of Protection and Powers of Attorney.

We can advise you on:

- The preparation of a Will
- Obtaining Probate
- Executor Responsibilities
- Investment Advice
- Post Death Variations
- Inheritance Tax Planning
- Trusts
- Lasting Powers of Attorney
- Court of Protection Issues

The breadth and depth of the expertise of our team is such that we offer private individuals and families a tailor made personal service of the highest quality.

We provide specialist advice to manage the personal affairs of individuals at every stage of their life. Our experienced Solicitors have a sound understanding of the issues, which can affect your personal wealth and family relationships and will take all of the necessary steps to protect your interests every step of the way.

Contact Ian Oliver on: 01243 812421
ian.oliver@georgeide.co.uk
www.georgeide.co.uk

On your side

LYNTON SERVICES

WWW.LYNTON-SERVICES.COM

Lynton Services provides first-class, flexible administrative support and assistance to business owners, trades people, consultants and individuals.

If you would like to talk about what we can do for you, please contact us at:

Email louise@lynton-services.com

Tel 07917 807155

MORRIS BUILDING SERVICES

Sham Morris

113 Finchdean Road, Rowlands Castle, Hants, PO9 6EN

RENOVATIONS
ALTERATIONS
SMALL WORKS

ALL ASPECTS OF PROPERTY MAINTENANCE AND REPAIRS, INTERNAL AND EXTERNAL

ROWLANDS CASTLE FREE ESTIMATES
(023) 9241 3130 07941 742598

BUSY BUGGIES

for busy mummies



**Fridays at 10am
Rowland's Castle Recreation Ground**

A safe and effective 45 minute workout, with a fully qualified trainer, and no need for childcare, bring your baby or toddler in their buggy!

Socialize with other mums, get back in shape, get fit and have fun in the fresh air

For more information call Lorna on 07979 646 880
Or email lornahancockpt@hotmail.co.uk

Also available for Personal Training



- Do you have Arthritis?
- Do you feel stiff and in pain?
- Would you like better strength, mobility, posture and balance?
- Do you want to improve your fitness?
- Would you like to feel better and have more energy?
- Would you like to meet other people with arthritis and have fun?

Then come and try a FREE Taster Class

Local exercise classes to suit your needs run by Chartered Physiotherapist Juliette O'Hea For more details call Juliette 02392 413885 or 07974 238787. Email: physio@arthritisfirst.co.uk

S.Roberts Upholsterers

Professional Upholstery

Contract & Domestic Any size of work undertaken

We provide a free measuring and quotation service.

Find us on CheckATrade.com

Call on 01243 377200 for all your Upholstery requirements.

email: srulimited@hotmail.com
www.re-upholster.co.uk.



Proud members of
Checkatrade.com
Where reputation matters



S Roberts Upholsterers Ltd
Unit 17 Clovelly Rd, Southbourne
Emsworth, PO10 8PD



For all your fencing needs

Suppliers & Erectors of Every Type of Fencing Including:
Chainlink • Palisade (wood or metal) • Panels
Closeboard • Weldmesh • Posts (concrete or wood)
Security Fencing • Trellis • Gates



We also offer a friendly reliable and competent skip delivery service to all local areas. Our skip sizes are mini, midi and maxi and we also provide a Grab service.



**TRADE
AND
PUBLIC
WELCOME**

Visit our website for any fencing prices or call 023 9241 2768
www.caroway.co.uk

Caroway, Station Yard, Bowes Hill, Rowlands Castle, Hants PO9 6BP



BUILDING CONTRACTORS

COMMERCIAL, INDUSTRIAL and
MAJOR DOMESTIC WORKS

Joinery Mill, The Green, Rowlands Castle,
Hampshire. PO9 6BW

Tel 023 9241 2741
www.winnicott.co.uk

Established
1904

Fax 023 9241 2212
mail@winnicott.co.uk



Austens

Petworth

Tel: 01798 342104

Billingshurst

Tel: 01403 782963

Midhurst

Tel: 01730 815979

Alton

Tel: 01420 85115

Emsworth

Tel: 01243 376852

Romsey

Tel: 01794 512141

Rowlands Castle

Tel: 02392 412332

homehardware

Not just paint!

WE COVER EVERYTHING!

- ✓ GREAT SAVINGS ON MANY RANGES
- ✓ FRIENDLY EXPERIENCED STAFF
- ✓ **OPEN SUNDAYS**

Dulux
PAINT MIXING CENTRES

www.rowlandshomehardware.co.uk

CHILDRENS LEARNING CENTRE

Member of: PLA and 4Children

125 New Brighton Road, Emsworth

EDUCATIONAL NURSERY AND DAY CARE SERVICES

OPEN 50 WEEKS A YEAR 8.00AM - 6.00PM

We offer full time and term time care for children from 0 – 5 years, hours and sessions to suit your requirements. Also we provide holiday activities for children 3 – 5, school age children – 12 years and an after school club



Telephone: 01243 372015 or email: childrenslc@btconnect.com



Introducing your newly refurbished village Hair and Beauty Salon

Offering a fantastic variety of Hair and Beauty treatments by experienced, professional stylists and beauticians.

Including:

- Cutting
- Colouring
- Perming
- Barbering
- Special occasions

Style Studio offers an extensive portfolio of services available for everyone.

And ... why not treat yourself to a spot of pampering in our beauty room?

Our qualified beautician hosts a range of personalised treatments.

For professional advice and bookings

Call: 023 9241 2606
3 Links Lane, Rowlands Castle



**Extra Mech
(Services) Ltd.**

**YOUR VILLAGE PLANT HIRE
COMPANY SUPPLYING A FULL
RANGE OF GENERAL PLANT**

**SEE OUR VAST RANGE
ON OUR WEBSITE
WWW.EXTRAMECHSERVICES.CO.UK**

**OR
CALL AND DISCUSS ON
023 92 412888**



Richard C Arnold

Optometrists & Contact Lens Practitioners

Est 1890.

Eye Care & Eye Wear

Silhouette

Ray-Ban

PORSCHE DESIGN

LINDBERG ∞

TD TOM DAVIES

NIKEVISION

bolle

Calvin Klein

Dior

PRADA

GUCCI

R

RODENSTOCK

HOYA



essilor

Weekdays:
9am to 5:30pm
Saturdays:
9am to 5pm

3-4 Exchange Buildings,
High Street, Petersfield,
Hampshire, GU32 3JU

01730 263302

www.rcarnold.co.uk

Care • Quality • Value • Choice • Service

Richard C Arnold
Optometrists

Your local central heating & boiler specialist



- ▶ New Boiler Installations
- ▶ Central Heating System Installations
- ▶ Service Plans from only £5 per Month
- ▶ 7 Year Boiler Guarantee
- ▶ Servicing & Repairs
- ▶ LPG & Oil Work Undertaken
- ▶ Havant Based

Proud members of
Checkatrade.com
 Where reputation matters



AURA GAS LIMITED



Costs include VAT!

New Boiler Deals From only **£1429**

Save up to 40% on your with a new 'A' Rated condensing boiler...

Replacing your existing Combi Boiler	Make and Model	Minimum Warranty	Cost	<i>The price you see is the price you pay!*</i> The cost includes a chemical system flush and Combi boilers are fitted with a new digital time control to optimise energy savings. All boilers include a Magnetic Filter to prolong the boiler life.
	Worcester Bosch 25 SI	7 years	£1,779	
	Worcester Bosch 30 SI	7 years	£1,999	
	Dimplex Combi 24 HE	5 years	£1,529	
	Alpha Intec 24 x	2 years	£1,449	
Replacing your existing regular boiler, one with a hot water tank	Make and Model	Minimum Warranty	Cost	
	Worcester Bosch 12 Ri	5 years	£1,629	
	Worcester Bosch 24 Ri	5 years	£1,869	
	Potterton Promax SL 12	2 years	£1,429	

Ensuring your heating appliances run efficiently and safely
Call 02392 252171 or visit www.auragas.co.uk

*All prices are subject to a site inspection