

A man with grey hair, wearing a blue shirt and a brown corduroy jacket, is sitting and playing an acoustic guitar. He is smiling and looking towards the camera. The background shows a room with wooden tables, chairs, and framed pictures on the wall. One picture is a poster for 'The Village' featuring names like John, Paul, and Herb. Another picture is a framed map of a village. The lighting is warm, suggesting an indoor setting with windows.

Rowlands Castle Association

Village Magazine
Summer 2011

www.rowlandscastle.com

Welcome to Keats Country

As your only Estate Agency within the village for many years we are in a unique position to offer you experienced local professional advice on all aspects of Residential Sales and Lettings.

With a network of associated offices in Hampshire, Surrey, West Sussex and Mayfair London you can be assured your home will be seen by the largest possible selection of potential buyers or tenants.

Visit our new website at www.keats.biz or look at our available properties on www.rightmove.co.uk

Simply call us on **02392 413333** to arrange your free market appraisal or email rowlandscastle@keats.biz or just pop in to our offices 'On The Green'.



Keats

Rowlands Castle **02392 413333**

Alresford • Alton • Grayshott • Haslemere • Liphook • Midhurst • Petersfield • Mayfair

keats.biz

Rowlands Castle Association

Village Magazine

Summer 2011

| | |
|--|-------|
| RCA Chairman's Report | 4-5 |
| Post Office under threat..... | 6 |
| Armed Forces Day | 7 |
| Village Fair | 8-11 |
| St John's Fair | 12 |
| School Library opens | 15 |
| May Day Picnic | 16 |
| Royal Wedding | 17 |
| Church on the Green | 18 |
| St John's Talent Show..... | 19 |
| Historical Society | 22 |
| Painting Society | 26 |
| Letters to the Editor | 32-35 |
| Police News | 37 |
| Horndean Music Society | 38 |
| County Council News | 39 |
| District Council News | 40 |
| Parish Council News | 41 |
| Parish Hall Management Committee | 42-43 |
| Obituary: Mary Cowin | 44-45 |

The Village Magazine is published three times a year by the Rowlands Castle Association. The aims of the RCA are to act as a channel of communication for the Village, to conserve the character of the Village and to enhance the life of the Village.

Editor: Richard Milton, 3 The Green, Rowlands Castle, PO9 6BW
Tel: 02392 413292 email: editor@rowlandscastle.com

Cover: Herbie's got talent! Rowlands Castle's Herbie Armstrong starred in the semi-finals of the hit TV show. Now he's on the other side of the judges' table. See page 19.

Photo: Courtesy of the Portsmouth News

Rowlands Castle Association

Issues facing the Village

By Catherine Billam

The aim of the RCA is to conserve the character of Rowlands Castle, to provide a channel of communication on matters of local interest and to enhance the life of the village.

There are currently a number of issues that may affect the character of the village, including the risk of losing our post office, possible future planning developments at Oaklands, Keyline and Mays Coppice Farm, Will Leonard and Mark Seaman's proposal to take over the Keyline woods for the village (covered in the last magazine).

You have the opportunity to affect all of these. You can vote with your feet for the post office. For the planning proposals, everyone has the right to make their opinions known, and the East Hampshire District Council website makes it easy to object.

If there is an issue that you think affects the village, the RCA offers you four channels of communication: this magazine, delivered free to every household three times a year; our noticeboard on The Green; the Grapevine, our email list; and the Rowlands Castle website at www.RowlandsCastle.com.

Please use these. The magazine welcomes articles and letters to the editor (email: editor@RowlandsCastle.com). Contact any committee member to put non-commercial items in the notice board. Join the Grapevine (email: grapevine@RowlandsCastle.com) and visit the website.

Next year will be the RCA's 40th Anniversary. If you have any memories or memorabilia from the last 40 years would you consider sharing them with us? We'd like to record how the RCA has enhanced the life of the village since its inception.

Finally, we're very proud of our new logo (below) and our grateful thanks go to the very talented Dave Ford who designed it for us. You will be seeing it around the Village wherever we are active.

Catherine Billam, Chair, RCA



Rowlands Castle Association

Your RCA Committee



Catherine Billam (Chair)
9241 3143
chair@rowlandscastle.com



Christina Harkness (Treasurer)
9241 2416
treasurer@rowlandscastle.com



Sue Connell (Secretary)
9241 3857
secretary@rowlandscastle.com



Steve Protheroe
9241 3440



Martha Dombey
9241 0030



Fiona Charlesworth
9241 3865



Mike Winn
9241 2704



Gillian Lovegrove (Webmaster)
9241 2426
webmaster@rowlandscastle.com



Richard Milton (Editor)
9241 3292
editor@rowlandscastle.com

Rowlands Castle Post Office

Post office under threat—Use it or lose it

By Sub Postmistress Susan Hare

Your Post Office service in the village is under threat due to lack of customers.

The Post Office is privately owned and is not subsidised by Post Office Limited, it is paid by the transaction, eg 60p per road fund tax, £1.25 per Special Delivery. With an average footfall of only 700 per week, unfortunately this is not enough to be able to sustain your Post Office in its current form.

There have been changes in the running of your Post Office. We are putting a team together who are friendly, helpful, efficient and knowledgeable on post office products and services.

We need to at least double the transactions by the end of the year to secure the future of the Post Office in its present format. However, we cannot do this without your help.

Some of you may not be aware of the range of services available from your Post Office so I have included a list below.

Please support your Post Office rather than purchasing on-line.



HEART OF THE COMMUNITY

Services available at the Post Office

Mail

- Letters and Packages
- Important and valuable items
- Large items
- Guaranteed next day.

Banking

- Cash withdrawals
- Cheque Deposits
- Cash deposits

Travel

- Travel Insurance
- Currency
- Euros held in branch
- 70 other currencies available next working day (if ordered before 1pm)

Telephone

- Post Office Home phone and broadband
- Mobile phone top-ups
- International phone cards

Savings

Moneygram

- Worldwide instant cash transfer.

- Bill payments
- Road Tax
- Fishing Licences
- Over 50 Life Insurance

SEE also Letters on Page 34

Our services honoured and remembered

By Richard Milton

Armed Forces Day was celebrated again this year in Rowlands Castle, on Saturday 26 June.

Ex-servicemen members of the Royal British Legion paraded on the Green at 11.00 where the Blendworth Brass Band introduced the ceremony with two hymns, Eternal Father Strong to Save, and Dear Lord and Father. Commander Clive Lewis of the Legion presented members to Vice Admiral Sir Roy Newman who took the salute.

Peter Coe and Bob Raley, Readers at St John's Church led the ceremony in the prayers and Peter Coe spoke the famous words of the exhortation "For the Fallen". Blendworth Brass Band played the Last Post and two minute silence was observed.

Vice Admiral Sir Roy Newman welcomed those attending and spoke of the importance of remembering the sacrifices made by members of the armed forces not only in the past but also in present conflicts around the world.

Councillor Ken Carter, Chairman of East Hampshire

Sir Roy Newman addresses ex-servicemen and members of East Hampshire District Council and Rowlands Castle Parish Council.

Photo: Richard Milton



Vice Admiral Sir Roy Newman chats to members of the Royal British Legion.

Photo: Richard Milton



District Council gave a short address and Councillor John Pickering spoke on behalf of Rowlands Castle Parish Council. Councillor Pickering also spoke of the commitment of British forces in conflicts around the world and of the the courage and sacrifice of British service men and women in all three services.

The ceremony concluded with the singing of the hymn Abide With Me, played by the Blendworth Brass Band.

Village Fair

Village luck shines on Fair again By Gill Bell, Chair, Village Fair Committee

We were blessed again this year with Village luck and the sun shone for this year's Fair on The Green.

Our Fair was opened by a really important member of our community - Kath Molloy the St John's School Lollipop Lady. This got things off to a flying start and soon the crowds were enjoying the many and varied activities that our stall holders had arranged. This also included the exciting fairground rides which this year saw the addition of the big wheel that was full to capacity all day. The whoops of delight and fright were heard across the whole of The Green which added to the overall spirit of the day.

We were also joined this year by a number of new organizations including Girl Guiding who were hoping to recruit some new leaders so that the Brownie Group in Rowlands Castle can be re-instated – we hope they had some willing vol-

Kath Molloy judged the fancy dress competition and awarded the prizes.

Photo: Graham Croker

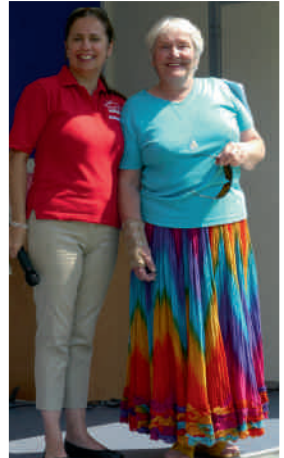


unteers. The Bee keepers had a fascinating stand to educate us all and sell some delicious honey.

The Horticultural Show had a record number of entries this year so thanks to everyone for participating. Brian Aherne commented that the judging was incredibly hard this year, especially the children's section where the standard was very high.

The arena events provided a really wide range of entertainment from Irish Dancing to the might of the Tug of War. The Hula Monkeys gave a great performance of their Hoola Hooping skills and also some ideas for keeping fit. Adults and children could also have a try at hooping and get some tips for tricks and ways of using the hoops.

The Children's Olympics provided some great entertainment and all our participants were great sports to join in with such enthusiasm and fun. Even some of the "big children" (mums and dads) also entered into the spirit of things and are getting much better at sack racing and



Gill Bell (left) with Kath Molloy who Opened this year's Fair
Photo: Graham Croker

marshmallow bobbing!

The Saturday Night Fever Evening Event was again fantastically well supported and some great dance moves and white suits were seen in action on the dance floor. The Bootleg Bee Gees sang all the favourite “Saturday Night” hits and also some of the songs that the Bee Gees wrote, which saw our dancers strutting to hits from “Grease” and many others. The “Bar on the Green” was also really well supported so we hope that this year’s fund raising will give us the opportunity to support even more children’s activities in the Village.



Top: The Tug O War teams battled it out to prove who has the strongest pull! Below: the fine weather brought out the crowds.

Photos: Graham Croker

Finally I need to thank all the helpers that assisted us greatly on the day – especially Clive Hancock, Bim Verrechia and Jim Holland. We really couldn’t run the day without their valuable assistance and generosity. Thanks must also go to the Village Fair Committee as it is a real team event and we have a real team spirit. We are always looking for new members so if you are interested then please get in touch via the Rowlands Castle Web Site. Next year’s event will be on 7th July so please put it in your diaries now!



Village Fair Roundup



Village Fair Roundup



Young and old enjoy all the fun of the Fair. Below right, Horticultural Show organiser Brian Aherne presents the Pat Carter trophy for photography to Ann Page.

Photos: Graham Croker, Pat Carter Catherine Billam and Richard Milton



St John's Summer Fair

Scenes from St John's Summer Fair

By Richard Milton



St John's Summer Fair enjoyed glorious weather. Above: mums and kids join in country dancing, the Bar-B-Q dads do their stuff and the flower stall does a roaring trade. Lower Left: Debbie Cornish sells cakes to hungry pup Maddie Arnold and below, little 'uns enjoy a traditional British steam train ride.

Photos: Richard Milton



St John's Womens Fellowship

Women's Fellowship celebrates 90th birthday

By Daphne Youngs

The Women's Fellowship has this year celebrated 90 years since formation, under the aegis of Rev Lloyd, whose wife was the first President. The resultant trawling through the archives has provided some interesting records of activity. They were certainly a feisty energetic lot of ladies, in the early part of last century, who despite forming the group primarily for reasons of fellowship and friendship, proved to be an amazingly successful group at fundraising for various good causes. St Dunstan's, The Lifeboat Fund and the Church Hall were all recipients of their fund raising generosity, but they also had a lot of fun, making jaunts to places as far afield as Windsor, The Chocolate Factory in Bristol, Lulworth Cove and even to see a performance of 'My Fair Lady' in Drury Lane. They gained an illuminated certificate in the 1953 Coronation Carnival for their lorry depicting Merrie England, and until 1962 had regular social events in the Parish Hall which was hired for £2.12.6d. They spent the huge sum of £32 on a gramophone record player, which was available for hire for 10/- a time, but only under supervision of a member! Mair Adams is the current President, but the numbers are fewer these days as society has undergone radical changes over 90 years. Amongst the social changes are the number of ladies who go out to work, and the fact of village church attendance being less commonplace.



Left: The Womens Fellowship celebrates 90 years in Rowlands Castle. Above: in one of his last acts as Rector, Rev Dennis Lloyd joins Womens Fellowship President Mair Adams in cutting the cake.

***The RCA wishes Dennis and his wife Melva a long and happy retirement on the Isle of Wight.
Photos: Richard Milton***

St John's School Library

Author Judy Waite opens the new library

By Francesca Wade-Palmer

In April a grand opening took place at St John's school when award winning children's author Judy Waite came to open the new library.

The library, which has taken four years to develop, has been a project the Head, Mrs Kay Pennicotte-Henrie, was determined to pursue and she is now extremely happy with the finished result "We now have a library at the heart of our school for all pupils to enjoy. It is a wonderful place where children from all year groups can discover the magic of books".

The library project began when Mrs Debbie Cornish, Extended School Services Manager, attended an extended schools meeting to be informed of monies available for capital projects. This was the opportunity St John's had been waiting for and after meticulous planning a bid was submitted which proved to be successful.

The plan was to transform the staff room into the library and build a smaller staff room, in addition to a community room, at the back of the school. The old DT area was also included in the plans and has since been redeveloped as extra classroom space for one to one and smaller group teaching. The Library Project has in fact had a far greater impact on the school than the sum of its parts! St John's now offers much improved facilities to both its pupils and the local community who have access to the new Library and Community Room.

The Rowlands Castle Village Fair Committee, the Rowlands Castle Association, Rowlands Castle Parish Council, Waitrose, School Governors and St Johns PTA all made very generous donations which made the furnishing and equipping of the library possible.

Judy Waite enthralled pupils with the contents of her treasure chest.

Photo: Francesca Wade-Palmer



Individual donations were also made by Ms Cherrie Dunmow, Mrs Janet Hird, Mr Michael Pring, Mr David Gatehouse, Mr Joe Johnson, Mr Paul Marshman and Commander A Cowin. St John's school is thrilled that it has been supported in this project by so many village organisations and individuals to create such a magnificent library that will be enjoyed by the children of the village for years to come.

When the opening day finally arrived, children eagerly anticipated the arrival of author Judy Waite. Many had read her books, in KS1 for example *The Singing Princess*, *Digging for Dinosaurs*, *Laura's Star* and *the Storm Seal* or in KS2 *Cheat* and *Nanuark*. Judy has also written a wide

St John's School Library

range of novels for older children including the Horse Healer series, The Next Big Thing, Game Girls and Forbidden. In the event Judy enthralled her entire audience, which ranged from 4 years old to 84, with her fascinating insight into a writer's life. She knew just how to keep 200 primary school children captivated with her tales of how to approach life as a writer.

She explained how to a writer even the most innocuous item can become an object of fascination when considering “why is it here? How did it fall in my path? Who has held it before? What is its story?” She also shared some of the events that inspired the writing of particular stories including Cheat which is a story about a child who enters someone else's painting into an art competition. The real life version took our breath away. We heard how a supposed friend offered to give ten year old Judy's carefully painted and framed picture of a horse to their riding instructor on her behalf, as Judy was feeling too shy, only to pass it off as her own gift! Poor Judy had to stand by and listen to praise and gratitude being heaped on her friend instead of her.



Right: Judy Waite declares the new library open and (below) she signs copies of her books.

Photos: Francesca Wade-Palmer



Judy Waite enchanted the entire school and children from reception class to year six were thoroughly absorbed by her colourful talk. After Judy had cut the ribbon to officially open the library, she stayed to chat to governors, guests and children, including members of the school council, and sign copies of her books.

School staff and pupils alike were delighted by the library opening and are enjoying benefiting from the new facilities.

Everyone is agreed that St John's school now has a library to be proud of.

May Day Picnic

Sun shines on May Day Picnic . . .

May 2nd was a red letter day again for Rowlands Castle when the sun shone on the annual May day Picnic, organised by Village Flagmistress Barbara Openshaw. The Blendworth Brass Band played, The Fountain's Sandra Kinge cooked burgers, and Jan and Trish Halliwell organised a display of vintage vehicles. More than £707 was raised in support of Rowans Hospice and a great day was enjoyed by everyone.



Above Left, Village Flagmistress Barbara Openshaw with her collecting tins at the ready. Above: Blendworth Brass Band provided the music. Below left: picnic-goers relax. Below right: enthusiasts inspect the line-up of vintage vehicles. Pat Carter and Rita Sandy sold plants and Verecchia's provided ice cream. A total of more than £707 was raised in support of Rowan's Hospice.

Photos: Richard Milton



. . . And on the Royal Celebrations

The party animals of Rowlands Castle showed their allegiance in time-honoured fashion by celebrating the Royal Wedding with a flurry of street parties. Villagers in Glen Dale, The Green, College Close Royal Gardens and Wellswood Gardens celebrated in style on April 29th—Royal Wedding Day.

Clockwise from the top, College Close, Glen Dale, The Green, Wellswood Gardens and (centre) the aptly named Royal Gardens.



Photos: Herta Billam, Mark Seaman, Jen Potts, Suzanne Maille and Richard Milton

The Church on The Green

A quiz with a difference

By Ken White, Presiding Elder

Something puzzling has happened at the Meeting Place. In fact at the time quite a few people were stumped by what was going on! We arrived at the Meeting Place one Friday evening at the beginning of March to find a dart board in the centre of the hall. Not quite like the normal darts board that you would expect to find at the local but one with a number of subjects listed around the circumference. Yes it was a splendid fish and chip and quiz evening and the winners walked away with a cup for each member of their team. This is just one of a number of events we have held recently. Another was a fish and chip evening with a difference. We were able to meet a team of four people who had recently visited India. They gave us a very interesting and lively illustrated account of their time there. It was a well balanced presentation giving a good insight into the work of their charity. They are helping many of the poorest people on that continent. They support schools, conduct rescue work among prostitutes and supply medical teams who visit isolated villages. We came away feeling it was an evening well spent. We have more events planned for the future and they are open to everyone. They have been well supported in the past so tickets are likely to sell very quickly but if you would like to join us for a similar evening in the future please see our local adverts or visit www.church-on-the-green.org.uk

“What the model railway taught me about the Village.” Paul Marshman the Secretary of Rowlands Castle Historical Society suggested this title for the talk that Peter Goss who built the model gave on July 1st. He spoke about his experiences and the people he has met during the time he and his wife Julie have exhibited the model up

and down the country and abroad. He has met people in far away places who recognised the village scene and who were able to add some knowledge to what life was like in Rowlands Castle during the critical 1940s. Have you enjoyed the welcome around a cup of tea or coffee at the Meeting Place yet? It is open on Tuesdays and Wednesdays from 10.30 a.m. until noon. Do come and join us.



St John's Talent Show

St John's School's Got Talent!

By Richard Milton

Rowlands Castle's celebrity landlord, Herbie Armstrong, was on the other side of the judging table when he helped pick the winners of this year's talent contest held by St Johns school.

Herbie was joined at the judging table by RCA Chair Catherine Billam and former St John's teacher Stuart Dickenson. The trio had a tough task as more than 120 acts had been whittled down during auditions to 17 superb finalists.



Above: judges Herbie Armstrong, Catherine Billam and Stuart Dickenson had a tough task. Right: Ventriloquist Tom Gorringe with "Dennis". Below left: Maddison Maguire, Maya Russell, Alisha Haynes and Georgie Cosens. Right: the winners and runners up.
Photos: Richard Milton



St John's Church

A churchyard with a history

By Daphne Youngs

At first glance, the wild flowers and long blades of greenery waving in the breezes in the local churchyard may look a bit neglected. There are areas, especially around the older graves, where the grasses are long and blooming. This has been developing since a survey by Susie Lockyer, who is a member of the congregation but also a professional in environmental issues. In the first couple of hours of conducting a survey, she found over 40 wild flowers and grasses, and realised that our churchyard is a very special historical grassland and quite a nature reserve. As a result, we have been leaving some of the flowery areas unspoilt, to attract butterflies and bees, with a view to cutting it again in September. Hence our long grasses are deliberate and purposeful! Susie points out that flowery meadows are increasingly rare. But they are invaluable for the essential bumblebees, which are in worrying decline, and which are so needed for the pollination of our crops..

Rev Dennis Lloyd and his wife Melva have now retired to the Isle of Wight, and the church is in an interregnum. They are much missed, but the skies have not fallen. The church is now on its knees in a right and humble way to seek guidance from the Lord himself as St John's faces various important decisions for its future.

St John's churchyard is a historical grassland and nature reserve.

Photo: Emma Youngs



No one knows at this stage when there may be any replacement vicar, so many of the services are being led by the Readers, of whom we are fortunate to have four. (Dennis was nearing retirement age, but had been unable to make a complete comeback since major surgery, so decided, not without regrets on both sides, to call it a day in Rowlands Castle). The 8 a.m. traditional Communion Services are largely being taken by either Rev Chris Abbott or Rev Stuart Cleaver - the latter one time curate of this parish in the 1980s.

We were also very sorry to say farewell to Pete Langdown who had served as Churchwarden over the past few years, but decided to stand down and move on when Dennis retired. Pete and Buffy have been stalwarts of the church and village community for years, and we are grateful for all they have contributed to St John's. By the time this magazine comes out we should have had the election for a replace

St John's Church

ment churchwarden, but meanwhile Lizzie Gradidge has continued to serve alone, very ably, in that capacity.

Former Rowlands Castle residents/church family members who keep in touch are Kate Taylor - now Kate Allen, famed for her work with abandoned babies in South Africa, known as Door Of Hope.

Dr Mary Styles, formerly of Glendale, is currently in Italy but now undergoing training for ordination in the Church of England. It is nearly eleven years since the family moved out to Rome, and a decade since she started up a simple Fellowship in Rome which she calls a fresh expression of church, known as Footsteps. This was to fulfill a need for an English speaking place of worship in the suburbs of Rome, where there are big populations of English speakers. The intrepid Hewitts - Ian and Jill - well known for their energetic cycling habits around our locality and further afield, went out in June to visit Mary and family. After flying to Rome with their bicycles, they then set off on two wheels to return across the Alps and down the Rhine valley - from Rome to home on two wheels each. They expect to take six weeks and we look forward to hearing more of their adventures on their return.

Looking ahead, it will shortly be September, when there is to be a nationwide Back to Church Sunday movement. Look out for invitations to come to church - even if you have never been before. You can be guaranteed a warm welcome at both St John's and at the Church on the Green.

Pam Ewing has taken over the St John's website, and is putting up fresh material each week, so it is worth a visit to keep up with what is going on in your Parish Church. See [*www.saintjohnschurch.org.uk*](http://www.saintjohnschurch.org.uk).

Part of our faith is believing that prayer really matters and also really makes a difference. We are very happy to pray for you, even if you do not attend church yourself. If you would like to be prayed for, email [*prayer@stjohnschurch.org.uk*](mailto:*prayer@stjohnschurch.org.uk) and you/your prayer requests will be brought before our Heavenly Father, who knows and cares for you.

*Jill and Ian Hewitt leaving
Dr Mary Styles to continue
Their cycle tour of Italy.*



Local History

A well shod Village

By Paul Marshman, Secretary, Historical Society

The photograph that is the subject of this edition is the shop of a boot and shoe maker, taken around 1908. As the sign tells us, the premises belonged to a family named Hall – a very familiar name in the Village today. The shop is located on the bend in Finchdean Road and the Village records tell us that in 1847 the shop belonged to Edward Hall, a bootmaker, while in 1907 Edward and Henry Hall worked together.

In the 1930s, the shop was extended upwards and other alternations were made. The building then became the site of the first Hall's Garage, before it moved to its present location on The Green. For some time in recent years, the house was called Sussex Gate, although actually the County boundary is some 40 yards away.

Halls were not the only bootmakers in the Village. A James King carried on the occupation at Durrants for at least 30 years in the first part of the last century and there was another boot and shoe maker, Augustus Bennett, in Redhill Road in 1907.

The Redhill Road premises may have been the same as that occupied by Alf Redsull, certainly between 1929 and 1935, and its address given as Number 22. Strangely enough, this was the address of Archie Brace in 1950, who many villagers will remember seeing as he repaired shoes on a last in his window. The shop front can still be made out and is now plainly Number 56.

Alf Redsull advertised himself as “Late Sergt, Master Shoemaker, 16 Hants and 96th T.R. Battalion” and was willing to accept orders by post. At the end of the Nineteenth

century, Halls made footwear known as “straights”. As the name implies, these boots had no shape and so could be worn on either foot. Boots such as these were ideal for ploughmen for, as they walked the furrow behind their horse-drawn plough, the boots wore unevenly. With “straights” they could change over to even out the wear, and the boots lasted longer.



Surprise guests drop in at the 'Royal Tennis Tournament'

By Mark Cooter

Rowlands Castle Tennis Club held its inaugural Royal Fun Doubles Tournament in windy conditions over the May Day/Wedding bank holiday weekend. 24 members played in the group stages and the follow on knock-out tournament.

Lynda Pine and John Marengi were worthy winners just overcoming Tom Arnold and Angela Sissons in the Final.

We were also delighted with a couple of surprise guests to present the prizes, finding time in their busy schedule! Despite the windy conditions most players stayed for a BBQ.

Club Nights are on Monday and Friday evenings at 6pm, the Friday session often followed by a visit to a local hostelry.

**New members are always welcome to come along to try us out.
Further details available from the Membership Secretary, Michele Harpur, on
membership@rctc.co.uk**



Willow on Leather

Cricket returns to the Recreation Ground

By Jonathan Law

The summer of 2009 saw cricket return to the recreation ground after a gap of a few years.

DACD cricket club, a social team originating out of the Department of Architects and Civic Design at Portsmouth City Council nearly 25 years ago, was looking for a new home. After many years of a nomadic existence playing home games on Portsmouth Council pitches, the club had been using Petersfield CC's facilities on the Heath but the cost of hiring the pitch was becoming prohibitive.

We had been aware that the former Rowland's Castle CC had moved down to Stanstead House so enquiries were made of the Parish Council with a view to playing home games at the recreation ground.

A major discussion point for the club was the fact that if we played at the Rec we would be responsible for the upkeep of the square (with some financial assistance from the Parish Council).

A consensus was reached to take the plunge and, in January 2009, armed with tape measures, rope, poles and rakes, the team managed to re-establish the position of the former square. In the coming months after much research, mowing and heavy rolling we had

Driving for the boundary. Cricket returns to the Rec.

Photo Russ Phillips



produced a square that, whilst not up to local league standards, was certainly fit for purpose for our brand of social cricket. Over the last two and a half years we have put a lot of effort into improving the square including essential rolling and levelling and re-seeding the square at the end of each season.

We have reached the point this season where we have a pitch robust enough to cope with 20 home games.

DACD cricket club has always set its stall out as a social team playing cricket in the right

Willow on Leather

spirit. The original Architects Department no longer exists and whilst a couple of players are still employed by the council we have an eclectic mix of civil servants, local government employees, dockyard workers, firemen, a baker (but no candlestick maker) and retirees.

We play a mixture of 40-over games on a Sunday and 20-over midweek against local club sides and pubs. Local club opponents include, Buriton, Clanfield, Emsworth and East Meon whilst pubs include The Red Lion at Chalton and The Queens Head at Sheet.

We also play works teams from Tax Office, BAE, Milcomms and Ray Marine. In all a varied selection of opponents all playing for the love of the game.

Ten years ago we embarked on our first tour to Devon returning the following year. Since then we have visited the New Forest, Somerset (3 times) Northamptonshire (4 times) and this year East Sussex. The annual tour has become a great success and is now a permanent fixture in our calendar.

This year sees a first, as we host a touring team at Rowlands Castle, the Ghent Arcadians from Belgium. We are looking forward to giving our guests a taste of traditional English village cricket.



The thwack of leather on willow.

Photos: Russ Phillips

Our fixture list is currently posted in the Pavilion and supporters are more than welcome down at the Recreation Ground.

**Jonathan Law
DACD Cricket Club
023-92412662**

Painting Society

Exceptional standard for Silver Cup Awards By Terry Devaney

The Rowlands Castle Painting Society's Silver Cup Awards took place recently in the Parish Hall, Rowlands Castle.

It is a prestigious event and the standard of work the members submitted was exceptionally high this year. There were fifteen different classes to enter, giving members plenty of scope to exercise their many talents using a variety of different mediums in the process. Newcomers to the society did very well, taking well deserved awards for their entries. On arrival, the members went around the exhibition and voted for their choice in each category. The votes were collected up, counted and the winners determined.

Master of Ceremonies Bob Payne had the overall task of setting up the exhibition. He was the driving force behind the scenes, ably assisted by a team of helpers. Elizabeth

Winners and runners-up in the fifteen categories of the Rowlands Castle Painting Society Silver Cup Awards. The standard was exceptionally high this year.



Painting Society

Hickman-Taylor and John Richards served refreshments as people arrived. Pat and Ian Hoper organised a superb buffet with Suzanne and Roger Hughes whose help was indispensable, food being brought in by members.

At the end of a very enjoyable evening, Joan Adams, Chairman of the Society presented the winners with their trophies and certificates. Joan selected a painting to receive the Jennings Wood Trophy, a delightful beach scene depicting small child with bucket and spade. Jeannie Hadwen presented Joan with a basket of flowers to thank her for the part she played in making the evening so successful. **For details of the Society please ring the Membership secretary on 023 9241 2599.**



Pat Hoper (right) receives the Watercolour Cup from Painting Society Chairman Joan Adams.

Trophy

Acrylic
Coterill Cup (oils)
Creative Trophy
Emily Norris Cup
Field Cup
Flower Cup
Force Cup
Geoffrey Hayman
Cup (Seascape)
Life Drawing
Mixed Media Shield
Novice Cup
Pastel Cup
Portrait Cup
Watercolour Cup
Wildlife Cup

Winners:

David Handcock
Barbara Wood
Angela Oakley
Barry Coppin
Derek Ridley
Fran Stewart
Anne Newsom

Tony Spencer
Fran Stewart
Dennis Oakley
Joyce Quin
Barry Coppin
David Handcock
Pat Hoper
Tony Spencer

Runners-up

David Hughes
Angela Oakley
David Hughes
David Hughes
Gill Dollery
Belinda Goad
Terry Devaney

John Shervell
John Richards
Jill Merrett
Norman Lawrence
Rosina Shaw
Jill Merrett
John Richards
Jill Merrett

1st Rowlands Castle Scout Group

Chief Scout's Award for nine local lads

By Ian Hawke, Group Scout Leader

What does the word “Scouts” mean to you? It could be that you immediately think of “DYB” & “DOB”, woggles, tents, knots or helping older people across the road.

Whatever your initial thoughts or your own experiences, Scouting today is a growing movement with over 31 million members worldwide, ½ million in the UK and nearly 40 young people (aged 6 to 14) in Rowland's Castle wearing the Scout uniform each week, supported by 15 adults all of whom

continue to give freely of their time. We still wear neckerchiefs with woggles, we still spend a great deal of time camping, we still tie knots and have helping others at the core of our values. We continue to provide a range of skills and opportunities all with an aim to contribute to the development of young people (boys and girls) in achieving their full physical, intellectual, social and spiritual potentials, as individuals, as responsible citizens and as members of their local, national and international communities.

Scouting is all about offering a wide range of activities to those taking part and we still reward achievement with the presentation of badges. These could be in support of a hobby, learning skills that may prove useful in later life such as First Aid, taking part in adventure, (for example camping, climbing, hiking) or developing their own understanding and interpretation of leadership, teamwork, responsibility and helping others.

The highest award for each section is the “Chief Scout's Award”, Bronze for the Beavers, Silver for the Cubs and Gold for the Scouts. To gain this top award the individual must complete challenges that collectively cover the skill set mentioned above. In the past 3 months 6 Beavers have completed this award. Well done to Jack Moth, James Arnold,

Ben Lucas, Tom Gorringe, Elliot Walters and Hayden Thelwell. And to Cubs Robert Bee, Luke Dancey and Oliver Beken on completing their Chief Scout's Silver Award.



Congratulations on winning the Chief Scout's Award to six Beavers and three Cubs (below).



Contact Ian Hawke, Group Scout Leader on 023 9246 2786

How the Luftwaffe came to Finchdean!

By Roger Guess

In March 2011 I went to a model show at the Grange at Midhurst and was so impressed by the model aircraft on display, especially a 1/5 scale Hawker Hurricane that I decided to make a large scale model myself. I've always admired the Focke Wulf 190. When first introduced in 1939, it was far in advance of any other fighter at that time.



I searched the web for large scale plans for sale in the UK but could find none, I eventually bought a set from a guy called Dave Platt in Florida USA. As I've never built a model aircraft before my next contact was Chris Midgley at 'Portsmouth Models' in Cosham, He was my mentor in this project, he gave me valuable advice on what materials to use, how to approach each stage of construction and where to obtain specialist items, such as the undercarriage, which was specially made for this model.

I am lucky to have a large workshop which you need to construct a model of this size. You have to build a number of large jigs to make the construction accurate.

The build is in 5 sections: 1. Elevators 2. Wings 3. Fuselage & undercarriage 4. Electronics & engine 5. Spraying & finishing.



It took a year of spare time building to complete the project. A friend and I started the 30cc engine for the first time last week. It was awesome, so much power, I cannot wait to fly it! But that will have to wait until I've been taught to fly a Radio controlled aircraft of this size.

So beware people of Finchdean, look out for a low flying Luftwaffe fighter!

Domestic heating advice

It's the little things that count

By Nic Radcliffe

Now that Summer is here my thoughts turn to what I've seen in the village in the last few weeks and in particular how sometimes it's the small things that matter.

Yes, sometimes substantial work is needed to improve a heating system so that it's reliable and efficient. For example, the village is now that little bit 'greener' since several old and unreliable boilers have been replaced with new 'greener' ones. And in one house a system is now running much more efficiently after several ageing radiators have been replaced by new high-efficiency ones.

But sometimes, it's the small things that can make all the difference. The under-floor heating in a house in the Village was struggling because the small pipes involved were virtually blocked with 'sludge' which is effectively bits of radiator. It was a small device that came to the rescue - a magnetic filter that catches and so prevents the 'sludge' reaching the pipes. In just a few hours the system was off its death-bed and back in fine action for happy and now cosy-footed householders!

Nic Radcliffe: hard water in Rowlands Castle can cause problems with plumbing.



The hard water in our area can also cause serious problems. A customer's dishwasher was having to do two cycles to have a chance of getting the dishes clean – hardly a 'green' way of doing the job. The solution was a small filter, new on the market, which simply attaches to the water inlet of the dishwasher to soften the water before it gets in and scales everything up. I've even fitted one of the 4cm beauties to ours to test it out and I've definitely seen a difference.

Then there was the combination boiler clogged with limescale. A small filter was again the solution, but the greatest thanks I got all month came from fitting a very special small device. A lady of mature years in the village was having trouble flushing her toilet as it had the old style, stiff lever flush system. The answer was a more modern push button flush siphon. Small but beautiful and one relieved lady!

I hope this has been helpful. If I can help you at all, please call me on 07905 908143.

A remarkable laburnum tree

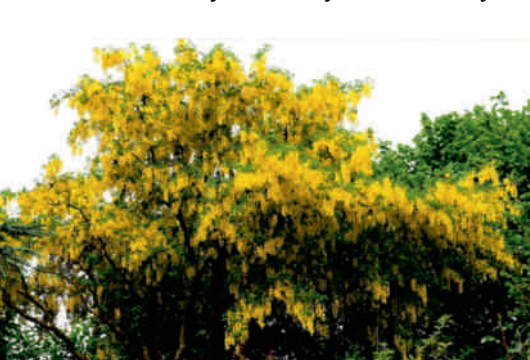
By Pat Carter

Once again the Village Fair is here, and I'm hoping to see many of your exhibits in this year's Horticultural Show. We are so lucky to have Brian Kidd give up his time to judge for us, so we must all enter as many Garden categories as possible to make it worthwhile.

One of the great pleasures of the summer months is that it gives me the opportunity to visit other people's gardens. Monica Lucas gave the Gardening Club an excellent talk in May on herbaceous borders. Her garden was open to the public at the end of May and so I had the chance to see her borders for myself – it was thoroughly enjoyable and I will be seeing the Bosham open gardens in June, too.

Plants this year have been very forward due to the hot spell we've been enjoying. The roses in particular are excellent but gardens are suffering from a lack of rain and the winds we had at the end of May did a lot of damage.

Recently I was invited to a house in Finchdean Road to photograph a remarkable Laburnum tree. The trunk is very rotten with a hole straight through. Yet the huge branches are a mass of colour! I wonder how much longer it will go on. If you have, or know of, anything unusual like this in your garden, please let me know – I always have my camera ready to go! Have you tried growing penstemon?



The trunk is a ruin but the tree is still a mass of bloom!

Photos: Pat Carter

They are particularly welcome during the summer months, growing 12 to 18 inches tall. They make nice bushy plants, producing lots of trumpet-shaped flowers on short spikes up to the early autumn. Growing penstemons is very easy, with very little care and attention required. You need good drainage and a nice sunny spot. Feed them with a general liquid feed such as Phostrogen or MiracleGro. They are really very simple and very rewarding.

Letters to the Editor



Sir,

Parish Council Committee

I've been a resident of our village for 23 years and have always taken an interest in the affairs of the Village. However, when I heard that the Clerk to the Parish Council had resigned I realised there had to be a reason.

One of the main purposes of the clerk is to guide the committee in the right direction in terms of procedure and because this committee is new it strikes me as being a thoroughly retrograde situation to lose the parish clerk. Obviously I wanted to know the reason for her resignation and that is why I attended the EGM at the Parish Hall on 9th June.

Am I right in assuming that the lady in question received a letter from Alan Craggs' solicitor, effectively putting a gagging order on her not to speak publically about certain issues?

Notwithstanding this, I decided to attend the EGM myself to ascertain the facts. Sadly despite a number of questions from the floor the Chairman side-stepped all the issues, the most pertinent being the issue relating to the solicitor's letter to the parish clerk. This was the crux of the matter. Direct questions to him were avoided. He refused to take my proposal from the floor which would have recommended a vote of no confidence be taken from the public meeting and voted upon.

Finally, I get the distinct impression that the current committee are dominated by a faction that was loyal to the old Parish Hall committee which is intent on pushing its cause to get Parish funds released to the Parish Hall without providing appropriate documentation that would satisfy a financial audit.

I recommend the current Chairman withdraws the solicitors letter to the Clerk of the Parish Council and invites her back to her post unequivocally; that he apologises for the hurt that has been caused not only to the Clerk herself but in general to the welfare of the management of the village and that he resigns his post as Chairman.

It was abundantly clear at that EGM that there was not one supporter (out of roughly 30 attendees) of the current Chairman and the decisions he's made. That alone speaks volumes.

Doug Murgatroyd

Letters to the Editor

Sir,

I write to express my dismay at what has occurred within the Rowlands Castle Parish Council.

No sooner has a new council been elected when the Clerk to the Council, who is well known in the village and has served the council well for over five years, is given no option but to resign due to a threatening letter from a solicitor acting for one of the new councillors. From reports of the recent extraordinary meeting of the new council I understand that there were calls for the new Chairman of the council to resign.

What is going on? We as electors and villagers of Rowlands Castle must be given a full explanation of what has gone on and how a new Parish Council can find itself in such disarray so quickly after being appointed.

I suggest a full Parish meeting is called so that all concerned can express their concern and the councillors can give the Village an explanation as to what has happened.

Keith and Diana Fisher

Sir,

As many of the residents of the village know, I recently celebrated my 30th Anniversary as the Golf Professional at the Golf Club, and during those 30 years I can honestly say that I have been blessed to live with my family and work in the Village.

In recent months I have become increasingly concerned about the events that have unfolded with the Parish Council, with these concerns compounded by the recent resignation of Jennie Hanman the clerk to the council. Having attended the annual meeting of the Parish, along with the recent emergency meeting of the Council coupled with the reports in the local papers, the claims are that the clerk has been subject to continual harassment which would suggest that her position as the parish council clerk became untenable. If this is indeed founded then as a resident of the village I find this totally unacceptable and would urge the new chairman of the Parish Council to act accordingly.

From my personal dealings with Jennie Hanman, I honestly believe that she was the best clerk we have had, and as a village I believe that we are now in an unenviable situation of having little continuity with our Parish Council in the face of some big decisions for the village on the horizon.

Peter Klepacz

Letters to the Editor



Sir,

Post Office under threat

May I through the columns of the RCA Magazine bring a plea to the residents of the village of Rowlands Castle and surrounding areas to support the local Post Office in what will be a defining period regarding its very future.

Most residents will remember me as "Graham" the ex Sub-Postmaster 1978-2005 during which time the local Post Office grew from a small turnover office to a substantial turnover office due to the gain of the increased array of services offered and, I also like to think, by the knowledgeable and pleasant service provided by the staff, this being rewarded by loyal and supportive customers made for a very busy office.

I no longer have any vested interest in the Post Office. However, I do have a grave concern for the future of our local office and would like to share with you my thoughts and feelings.

I believe everyone is aware that the last Sub-Postmistress and husband will not be returning and, on this point I have nothing more to say. The problems facing the office going forward are turnover/transactions. The number of transactions carried out at the office fell through the floor some time ago and have not recovered. There will be various reasons for this including - level of service, changes re payment methods, on-line licensing etc., each one of these reduces the total number of transactions carried out at the office. The Postmaster/Postmistress is remunerated according to the number of transactions and the office will only retain certain elements of work if it has a sizeable turnover.

As I have stated the number of transactions at the office are extremely low and need to almost double over the next twelve months, if not, then the first possible effect could be the loss of Bureau De Change as well as the removal of Car Tax provision. If this happens customer attraction to the office will be less and transactions will again decrease. Should this occur the next possible action could be a re-grading of the office to Community status which involves restricted opening days/hours, ultimately possible closure.

Think, would you want to take on an office with this threat over your head and, what of the landlord's position.

NOW! I urge everyone to give support to the office. The staff aren't permanent and will not be until there is something viable to work with, but I am sure they will do their utmost to serve you as best they can for the foreseeable future.

Please try and carry out as many transactions as you can, buy your books of stamps from here not other retail outlets, pay those bills that you can, withdraw cash from your Bank, purchase your foreign currency, don't tax your car on-line - do it

Letters to the Editor

here! Please just think; can this be done at the Post Office? If so, then do it.

If you believe, as I do, that this community needs and benefits from this facility, I make no apology for using a slogan I have used many times in the past, USE IT OR LOSE IT. Quite simply it is down to all of us.

Kind Regards to All,
Graham Griffiths.

Sir,

Thanks to Parish Hall Volunteers

I attended the Parish Council Annual Meeting on Tuesday, 26th April at which nearly every village organisation was given an opportunity to report on their activities during the year.

What a pity that the Parish Hall Management Committee was given no opportunity to report. It did not give those present the chance to thank the committee and small group of volunteers for the enormous amount of hard work they have carried out on our behalf over the last 2 years or so.

The Parish Hall is a very precious asset in any village. Three years ago, ours was very much showing its age and looking pretty run down to the extent that was faintly embarrassing. In the last 2 years we have seen it thoroughly refurbished at a cost to ratepayers of little more than the raw materials – to the extent that it is now regularly being used for wedding receptions – at least 2 in the last 6 months to my knowledge.

I'm sure other residents would wish to join me in heartfelt thanks for the huge effort and time taken by the management committee and volunteers.

Thank you, again, all you willing workers.

Ian Hewitt

**If you have any comments to make, please address your letters to:-
Richard Milton, Editor, RCA Village Magazine, 3 The Green, Rowlands Castle,
Hampshire, PO9 6BW.**

Beekeeping

Beekeeping in Rowland's Castle

By Mike Cotton

Have you ever considered keeping bees in your garden but are not sure how to get started?

Before starting out, think about the size of your garden, the possibility of objections from your neighbours, the safety of children and pets. If it is not feasible to keep your bees at home there is usually a farmer who will let you keep your bees in his field.

Recently there has been wide publicity in the media regarding the worldwide problems facing the honey bee. This has raised people's awareness of this fascinating and interesting insect. The more people who take up beekeeping and who are well informed, will go a long way to preserving this fascinating, industrious insect. Most of the food we eat is directly attributable to the honey bees pollinating activities.

As a Beekeeper you will be stung at some point however this is not as drastic as it seems. Bees are usually quite gentle when treated with respect. The more experience you gain the more confident you become.

The first step to becoming a "New Bee" is to join a local beekeeping association or attend some meetings as a guest. Dip your toe in the honey. If you feel it would appeal to you, then the next step would be a short but informative course on beekeeping basics carried out by an experienced beekeeper from the association. This gives a good grounding and can lead you into the next stage of obtaining your first bee hive with its occupants.

The association can guide you through the early part of setting up your apiary as there is a little more to it than just buying a hive and popping it in the garden. All associations have experienced members who can mentor you during the early days and give you support.

Portsmouth Beekeepers Association meets on the last Thursday of each month in Portchester, please contact **Mike Cotton Education Secretary PDBKA 02392 412758**.

For more information visit our web site www.portsmouthbeekeepers.co.uk



Speedwatch scheme ready for launch By PCSO Debbie Neesham

The South of Butser Speedwatch scheme is in its final stages before the 'Big launch', we now have a majority of the equipment, a good healthy number of volunteers through the vetting stage and ready to commence their training. We are looking to complete training by early July, once all volunteers are fully trained they will be ready to go onto the roadsides independently making our roads a safer place along with the support of your local beat team.

For those of you not aware of the scheme, Speedwatch is run by local volunteers who donate a small amount of their time a month to reduce speed and increase

awareness of the effects of speeding in the community. This will be done by using a speed Indicator device (SID) in many different locations through out the area. Any vehicles that are travelling at speeds which would normally mean being issued with a speeding ticket will have their details passed to the police so that an advisory letter can be sent. If they are caught again then they will be visited by a local beat officer. The whole point is to educate and not to directly punish.

Earlier this month, the SOB team were out on Portsmouth Road, Horndean testing out the equipment and ensuring it is safe for volunteers to carry out the required role. This was received very well by both drivers and local residents with a dramatic decrease in speed once the large sign was noticed, with the speed reducing to an average of 25 mph.



PCSO Debbie Neesham and PS Gavin Parkes man a portable SID—speed indicator device—of the kind that will be used in Rowlands Castle.

We are still keen to gain extra members for the area. If you wish to become a member or to receive further information on the scheme please email southofbuster.snt@hampshire.pnn.police.uk or call 101 leaving a message for the South of Butser beat team.

Horndean Music Society

A new beginning for music society

By Arthur Bickers, Chairman.

We are coming to the formal end of our 2010 – 2011 (64th) season with a concert on 7th July to be presented by Lucinda Willits – Oboe accompanied by Nicola Tabcart – Piano. This time they will be joined by Jon Audain - Flute to make a “first” with the Horndean Music Society. That will leave us with one more concert, on 4th August, by the Monington Trio of Karen Kingsley – Piano, Robert Blanken –Clarinet and Sue Anne Emerson –Cello. This replaces the concert scheduled for 2nd December, 2010 which was abandoned due to a heavy overnight snowfall.

Looking back we note that the season provided members and supporters with an array of light classical music played live. There were highlights:

On 5th May we were entertained by Peter Rhodes and Students from South Downs College. In turn the Society presented a prize and citation to Alistair Gibson, a student with outstanding talent and a work ethic to match. Alistair is now moving on to the Guildhall School of Music and Drama. This proved a well-earned and popular choice.

Finally, we provided an upgrade to the Church Hall piano by the purchase of a Kawai CX which will provide our performers with further scope for their concerts.

With the completion of last season’s programme we will look forward to the next with an opening concert on Thursday, 6th October by Cathy Mathews and her String Quartet accompanied by Karen Kingsley – Piano. That will give us a fine start to the new season and a “date in your diary” for all music enthusiasts.

The full programme of ten concerts will be published on the RCA website and on local notice boards shortly. They will be performed at the Blendworth Church Centre on the first Thursday of each month (except August and September, normally). All are welcome.

Arthur Bickers,
Chairman.

For further information telephone Arthur Bickers 02392 412480.

Contrasts Jewellery Fair— A date to remember

Contrasts Jewellery Fair is be held for the third year running on November 5th and is again being held at St Johns church hall. The successful event is again being organised by Jonquil Tonge and Sylvia Tomkinson and promises to exhibit a broad range of contemporary jewellery.

For details: jonquil.tonge@btinternet.com or sylvia@tomkinsn.demon.co.uk

Traffic volume is Village concern

By Sam Darragh



Time seems to have flown by since last writing my contribution for the RCA magazine but nonetheless a busy time. I like many others have been following the Keydell Nursury application with interest. There seems to be concern at the increased volume of traffic this would bring and the effect this will have on the village. My role as your County Councillor is to monitor the traffic and highway implications and seek to resolve any issues that arise with the County Council.

Many people have contacted me about the roadworks being conducted in Durrants Road. The road will once again be closed for six months whilst a new culvert is installed. This is necessary to prevent the flooding which has caused so many problems in recent years.

When the road was last closed it caused a great deal of inconvenience to those living in Prospect Lane as it was used as a rat-run. However the lane is an unsuitable diversion and has been damaged. To protect the lane next time a temporary one-way system will be in place as well as a temporary speed limit of 30mph. I have been asked what will be done about the damage to the verges in Prospect lane and have been assured this will be looked into after the next round of works.

At Hampshire County Council I am observing tighter budgets and cut backs to services. Some are necessary but some I feel uneasy about. One change that has caused some alarm is the changes to our Children Centres where there has been a £6million reduction in funding. Whilst some other authorities in the country have made cutbacks to their children centres, none have done so to this scale.

A lot of parents and County Councillors are worried about the implications of these cuts for our children's future. It is proposed to merge the centres and whilst there are no plans to close any centres, there are no promises that they won't close if they are not run by the County Council. I was very happy to support the parish hall with my councillor's grant which has been used to implement some improvements to the building, this was to enable the hall to be used by a Montessori nursery group which I'm sure is a very welcome addition to the village.

As always, if you ever wish to speak to me, please call or email me.

Sam Darragh
County Councillor Catherington Division
Spayne1701@yahoo.co.uk
02392 592072

District Council News

Planning is top of the agenda By District Councillor, Marge Harvey



Dear Fellow Residents, I would like to start this report by thanking all of you who voted for me in the District Election and I will do my very best to work hard for all residents of the village. I would also like to thank Steve Protheroe for a very well run opposition which was carried out in a very positive way.

Now, back to work. There are still many things to be done and one of the first is to let you know that the planning application for the Keydell Nursery Site is coming to the East Hampshire planning committee on Thursday July 7th at Penns Place, Petersfield. If you would like to come along, you will be made very welcome, so please come along and have your say. The past chairman of the Parish Council will speak on behalf of the objectors if you wish, but you must contact him.

For the last 7 years, I have been trying to get designated parking for Links Close off Castle Road and have really struggled to get funding, but at last I have it, and I have just been to a meeting this week with Radian to start the ball rolling. I hope that it will be finished before this winter, but there is still planning to do before it can be started, and at last it looks as if it will now go ahead. It just shows that if you keep at it, it can be done!!

The arboricultural officers from East Hampshire have been to the Keyline Site this week to look at the trees in more detail and to place permanent tree preservation on all of the trees deemed worth keeping. They are very good at their job, so I have to be guided by them and I will meet them on site to go through this very soon. I had a blanket tree protection order put on all of the trees six months ago but now they have to decide which ones really need protecting. We still do not have a planning application in for Keyline and I will let you know as soon as I have anymore information about the site.

I have been asked to join the community Safety Team committee for this year and I am looking forward to the challenges that this committee face. I will be working very closely with the Police on this committee, so hopefully I will be able to report some of these challenges to you in the future.

Don't forget my surgery on the first Thursday of every month where you can come to the coffee shop and sit down and have a drink and a chat. I will be there between 11am to 12 noon but as always you can contact me at home if there is anything that I can help with. Last, but not least, I would like to say how very sorry I am that Jennie Hanman, the clerk to the Parish Council has felt it necessary to resign. She has been a great asset to the village and is regarded as one of the best clerks in the area. She will be sorely missed, especially by me, as she always kept me in touch with all that was happening in the parish so that I could help with any issues. I do wish her all the best and know that her next employers will be very fortunate to have her.

Marge

All change at Parish Council

By Parish Council Chairman, John Pickering

It has been a case of “all change” in the Parish Council as a result of the May elections. None of the previous Councillors stood in the election (although 3 had been initially nominated, they then withdrew). The Parish Clerk, Mrs Jennie Hanman, has also decided to leave. We express our thanks to them all for their contributions to the life and well-being of Rowlands Castle.

There remains a vacancy for a Councillor to represent the Finchdean ward on the Parish Council. Expressions of interest in filling this vacancy will be welcomed, via the Parish Office please. It is not essential to live in Finchdean, though some awareness of its interests and needs would be helpful.

Applications have been invited for appointment as Temporary Clerk to serve until 30th September 2011. This will give the Council the opportunity to review present working arrangements in the Office before making a permanent appointment.

The members of the Parish Council are now: Mike Barrett, who is Chairman of the Planning Committee; Sue Brooks, Vice Chairman of the Council; Alan Craggs; Malcolm Johnson, Chairman of the Finance Committee; David Lester; Kath Molloy, Chairman of the Traffic Committee; John Pickering, Chairman of the Council; Bill Wilson, Chairman of the Open Spaces Committee. The Chairmanship of the Recreation Ground Committee is yet to be filled. We hope to provide pen portraits of the Councillors in a future issue.

I believe the new Councillors are a good blend of people who have lived in the village for many years and some relative newcomers. There is a wide range of employment background and experience. Above all, we have a strong commitment to serve our village and all residents to the very best of our abilities.

We continue to deal with the on-going issue of the Planning Application by Keydell Nursery, as well as the potential application on the Travis Perkins/Keyline site. We have recently heard that the planning appeal in relation to the affordable housing issue at Oaklands House has been refused, so we await further developments on this. Work is continuing to plan the improvements to the state and facilities of the pavilion at the recreation ground. This will include provision of toilet facilities accessible to all users of the ground. The joint project with the Village Fair Committee continues which, over the years, has led to the provision of significant additional play equipment at the recreation ground. We are very grateful for the continuing support of the Village Fair Committee.

Do please take an interest in the workings of your Parish Council and please feel free to contact us when necessary. Our personal contact details are available on the Parish Council website: www.rowlandscastlepc.org.uk, or via the Parish Office on 023 9241 3044. The website also has details of Council agendas and minutes, as well as other useful general information.

Parish Hall Management Committee

A year of achievements for Parish Hall

by Alan Craggs, Chairman, PHMC

On the 24th May we held our 26th AGM and it was a pleasure to welcome so many members of the public to hear our news and for a glass and nibble after.

As Chairman I explained that in view of professional advice received regarding the allegations made by members of the outgoing Parish Council I would not make any comments regarding this matter other than to thank the committee to agreeing to conduct a full and in depth investigation of the matter, and for their unanimous vote of confidence.

I was able to report that bookings are up to 11.5 per cent and that the hall is profitable. As a result we were able to write to all users and advise them that hire charges will be held at the 2010 level for 2011.

Because of a lack of capital the renovation program has not forged ahead as much as we would have liked but by employing the surpluses we have generated and the kind donations from, EHDC, RCA, Montessori school, our county Councillor, the W.I. and a number of private individuals we have made some improvements over the last year.

These include installation of proper controls to the central heating system, Wi Fi, new mood lighting to the Large Hall, modifying the sports hall lighting in the large hall, installation of two new fire doors, new roller shutter to the kitchen, replaced old round tables, renovation of the small hall floor, strip and wax doors to large and small halls, new disabled toilets, baby changing station, renovation of entrance area, pong free the Gents WC, installation of new fence to the garden, new 6 foot back gates, cleaning contract, new comprehensive licensing, and a computerised accounting system.

To achieve these improvements we have been helped by our volunteers who include Colin Mason, Cathy Molloy, Cathy Craggs, Mike Stafford, Steve Protheroe, Bill Wilson, Freda Stafford, David Symonds, and Sam Payne. Plans for this year include kitchen, side corridor, ladies and gents WC, rear corridor, repaint the front of the building, survey roof for preventative maintenance, build new storage, and new meeting room.

Eleven new groups have joined us in the past year including Adult Judo, Latin American dance, Yoga, Youth Judo, Montessori School, Pilates, and the W.I. Craft and Scrabble clubs.

There have been changes in the composition of the committee. Stuart Meek stood down through pressure of work, but remains as our legal advisor. Mike Stafford rejoined us and has taken on the role of Hon Sec. We lost John Pickering for many months due to his illness and it was good to see him back. Following his election to Chairman of the Parish Council he has stood down to concentrate on his new responsi

Parish Hall Management Committee

bilities and we look forward to working with him and the Council in the future. Margery Neat stood down at the AGM following many, many years of devoted service to the hall but will stay in touch to ensure we are kept in order. It is impossible to describe how much she has done for the Hall and the village. David Symonds recently joined us and has taken on the role of Vice Chairman. He has made a very significant contribution to both the quality and quantity of the renovation work we are able to undertake. Barbara Openshaw joined us at the AGM and we look forward to her wise council and help in making the Parish hall what you want it to be.

We are dedicated to helping new organisations and we are usually in the office from 10am to 2pm, so why not drop in for a chat and let us know what else we can do to help you. The coffee is free.

Alan Craggs
(Chairman) RCPHMC.

Rowlands Castle Parish Council Vacancy for Finchdean Parish Councillor

The Parish Council currently has a vacancy for a Councillor to represent Finchdean.

If you are interested in standing for this role you need to contact the Parish Office with your details including a short statement in support of your application as soon as possible. You also need to be able to attend a Full Council meeting arranged for Monday 5th September 2011 at 7.30pm at the Parish Hall, Links Lane, Rowlands Castle when you will be required to give a short presentation to the existing Councillors who will then make a decision by form of a vote as to which, if any, applicant should be co-opted onto the Council.

If you require more information please telephone the Parish Clerk at the Parish Office on 023 9241 3044.

Clerk to the Council
16 May 2011

Births, Deaths and Marriages

Obituary

Mary Agnes Cowin 1923-2011

Mary was a figure central to village life, the St. Hubert's congregation and the artistic and musical community in Hampshire. Mary rose high in the nursing profession, before changing tack in 1960 with her marriage to Anthony and then the arrival of her sons Christopher and Timothy. Throughout her life Mary found the time to practice her talents for wood carving, sailing, music and gardening. She leaves a rich portfolio of work and a garden of flowers.

During the winter of 1944 she trained as a midwife in Grimsby, before training for her SRN qualification at the Royal Halifax Infirmary, where she could recall wards full of injured servicemen. Her next posting, now as a Queen's Nurse, was to The Isle of Wight. Mary was the health visitor responsible for a large district to the east of Cowes.

Two years later, Mary applied to Queen Alexandra's Royal Naval Nursing Service. She found herself reporting to the Royal Naval hospital at Chatham and began a long period of association with the Navy.

After a year at Chatham, Mary was posted to Malta, in the mid-fifties a major British military base with Louis Mountbatten as Commander in Chief. Subsequently, Mary was posted to the Naval hospital at Haslar in Gosport, which could not quite match the colour of Malta. Mary looked back fondly on her time in the QARNNS and liked to call the Navy her "finishing School". From Haslar Mary moved on, to join Hampshire County Council as a health visitor.

While nursing at Chatham Royal Naval Hospital she sailed RNSA dinghies on the Medway, and while stationed on Malta she bought her own boat, the canvas-sailed *Mari-dade*. She kept it at Hayes Wharf on Lazaretto creek. After Malta, Mary became a keen member of the Island Sailing Club in Cowes where she would crew in the dinghy racing and became friendly with renowned yachtsman and designer Uffa Fox.

If it had not been for the war it is likely that Mary would have gone to art school and become an artist. Paintings, drawings and wood carvings exist from almost every period of her life. She exhibited during and immediately after the war in Manchester, including exhibitions at the Manchester Ballet Club, alongside established artists such as L.S. Lowry.

Recently Mary has been a member of the Rowlands Castle Painting Society and her design for the society logo, and that of the Rowlands Castle Association, will be familiar



to many. She designed the symbol for St Hubert's Church, marking the 950th anniversary of the building

Mary began carving wood as a child and this, alongside music, was one of her greatest creative outlets. She loved wood in all its forms and would work to bring out a shape lying half hidden in the wood already. She exhibited in London, together with Portsmouth and Chichester and gave wood carving exhibitions at venues such as the Queen Elizabeth country park.

From the early days in the school orchestra, scarcely a week can have gone by during which Mary did not pick up her violin; her favoured instrument, although she could also play viola, piano, clarinet and mandolin. Orchestras have played an important role down the years; the Royal Aircraft Establishment orchestra and later the Waterlooville Light Concert Orchestra of Reggie Wassal being two. It was in Waterlooville that she started to play together with her great friend Peggy Newman, a musical partnership that continued over more than 40 years.

In Rowlands Castle, after Christopher and Timothy had grown up, Mary turned her energies to founding the Bowes Music Group. This began in 1987 as a group of 15 players, with Mary's old friend Ernest Barr leading the violins. They gave countless concerts over the years, raising considerable sums for charity and enhancing cultural life in the village. And of course, Mary was a member of the Petersfield Symphony Orchestra for 35 years, where for some time she led the second violins.

When she met Anthony in 1959 Mary was part of the team at St. Clement's surgery in Winchester, working with six GPs and supervising the baby clinic.

Not long after their marriage in early 1960, Anthony and Mary were posted by the Navy to the Royal Military College of Science at Shrivenham in Wiltshire, and following this to RAE Farnborough. Within Rowlands Castle her activities have included many years of delivering meals on wheels around the village, active membership of the WRVS and the Women's Institute and involvement in a host of voluntary projects as diverse as Butser archaeological digs, stewarding at Stansted House and helping in Emsworth museum.

She had a strong faith and was an enthusiastic member of the church throughout her married life, first Christchurch at Widley, later St. John's and, of course, St. Hubert's where she was proud to carve the staves that are in place today. Much of her art reflected her Christian belief and much of her music was played for the benefit of a church and its congregation.





Change 4 Life starting right here, right now!



moreactive4life

change
4 life

6 weeks
for just **£39***

Curves is the world's largest female health and fitness organisation with a proven and successful fitness programme. Come and join us so we can help you become More Active 4 Life and achieve a positive Change 4 Life. Experience what over four million women worldwide are experiencing! Just 30 minutes a day, 3 times a week will get you the confidence you deserve. Let us be your inspiration, let us be your Curves.

Curves.

The power to amaze yourself.™

curves.co.uk

moreactive4life.co.uk

023 9266 3030

Curves Portsmouth

3rd Floor, 120 London Road

Portsmouth PO2 0NB

www.curvesportsmouth.co.uk

023 9225 0006

Curves Waterlooville

27 London Road

Cowplain PO8 8DF

www.curveswaterlooville.co.uk

Offer based on first visit discount and minimum four month direct debit program. New members only.
Not valid with any other offer. Valid only at participating locations from 1st July to 31st August 2011.
© 2010 Curves International, Inc. All Rights Reserved.

Visit today

**AVS FENCING
SUPPLIES LTD**



Stansted Sawmill

- Fence Panels • Concrete & Timber Fence Posts
- Raised Veggie Beds • Railway Sleepers - 10 types
- Boarding and Cladding for sheds, stables and garages
- Oak Gates & Doors • Oak Beams • Chestnut Products

Interesting Products for your Property

AVS Fencing Supplies, Stansted Sawmill Stansted Park Rowlands Castle Hants PO9 6DU
Tel: 02392 412445 www.AVSFencing.co.uk



Inspiring gardens....
from concept to completion

Landscaping • Bespoke Designed Gardens • Planting



Extending your home into your garden

FREE CONSULTATION AND QUOTATION

Tel: 02392 413865 Mobile: 07767 867603

office@charlesworthoutside.co.uk www.charlesworthoutside.co.uk



HEATING • PLUMBING • BATHROOMS

I can help with all your boiler, heating, plumbing and bathroom needs. And I live right here in the village, so can call round at short notice.

Here's my number.
Please keep it in a
safe place.

07905 908143



fabulous
flooring
with a
perfect fit!



Service is the secret of satisfied customers and satisfied customers are the secret of our 43 year success.

- Fabulous Carpets from Greendale and Brintons
- Crucial Trading Specialist
- Fabulous Vinyl Tiles from Amtico, Karndean & Cavalio
- Warm & Cleanable Ceramic Tiles from Cavalio & Amtico
- Fabulous Pergo Laminate Floors with New Designs
- Oak Floors – Engineered Planks and Solid Click
- Fabulous Bamboo & Cork Floors
- 12 MONTHS INTEREST FREE CREDIT on all products



We promise you a flooring that fits your requirements, fits your budget and fits beautifully into your home. Please call in, anytime.

A pleasure to come home to.....

31 The Square, Petersfield, Hampshire Telephone: 01730 262223/267381 Fax: 01730 267394
email: sales@waterloovillecarpets.co.uk www.waterloovillecarpets.co.uk

Print. Perfected

As the South's largest commercial printer,
we handle all your print needs:

Brochures • Folders • Catalogues • Programmes
Stationery • Flyers and much much more...



**TACKLE YOUR PRINT REQUIREMENTS
WITH BISHOPS PRINTERS**



Follow us on Twitter for up to the minute news,
print tips and last minute offers.

Large enough to cope, small enough to care

T: 023 9233 4900
enquiries@bishops.co.uk
www.bishops.co.uk



Print. Perfected



Moisture in your double glazing? don't replace it, repair it!

idealwindowsolutions 

We repair PVCu, Aluminium, Timber windows and Doors

- Fogged double glazed glass units ✓
- Window and door hinges and stays ✓
- Leak & draught repairs ✓
- Local Authority Approved ✓
- Handles/mechanisms repaired & replaced ✓
- Trading Standards Buy with Confidence Approved ✓

NO Call out charge with Free Quotations & Advice

IWS are local specialists in the repair, upgrade and maintenance of double glazed windows and doors.

We supply & install windows, doors & conservatories and carry out all other window & door repairs

Local company with fantastic Checktrade feedback from over 800 satisfied customers



WE COVER HAMPSHIRE AND WEST SUSSEX
FREE PHONE 0800 731 8761
www.idealwindowsolutions.co.uk

IWS Ltd, Unit 12 Blackbrook Business Park, Blackbrook Road, Fareham, Hampshire PO15 5DR



Need help with the cleaning?

At Bizzy Bodyz we're here to do all the jobs you hate

We can do:

- a weekly clean
- one off deep clean
- post builder's clean
- end of tenancy clean
- washing & ironing (free collection & delivery)

Give us a buzz now on

023 9269 0101

www.bizzybodyz.biz

microsomma



IT Support for Home & Small Business

Comprehensive computer hardware & software support

David A. J. Somma BSc

Remote support & call out services available

Please see my website for local recommendations

david@microsomma.com

tel: 0845 - 0170772

www.microsomma.com

mob: 07796346526



**For all your
fencing needs**

Suppliers & Erectors of Every Type of Fencing Including:

- Chainlink • Palisade (wood or metal) • Panels**
- Closeboard • Weldmesh • Posts (concrete or wood)**
- Security Fencing • Trellis • Gates**



We also offer a friendly reliable and competent skip delivery service to all local areas. Our skip sizes are mini, midi and maxi and we also provide a Grab service.



**TRADE
AND
PUBLIC
WELCOME**

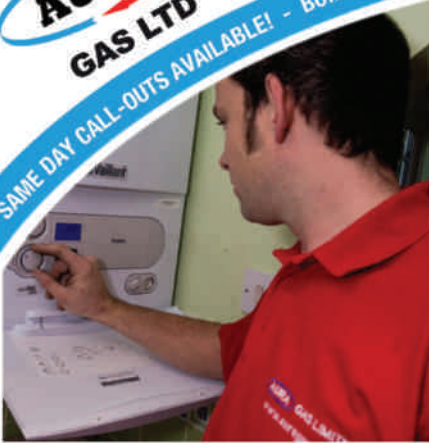
Visit our website for any fencing prices or call 023 9241 2768

www.caroway.co.uk

Caroway, Station Yard, Bowes Hill, Rowlands Castle, Hants PO9 6BP



SAME DAY CALL-OUTS AVAILABLE! - BOILERS INSTALLED WITHIN 48 HOURS



BOILER MAINTENANCE FROM
£8.95 A MONTH

BOILERS INSTALLATION
CENTRAL HEATING
LPG & OIL WORK
5 YEAR WARRANTIES
SERVICES AND REPAIRS

CALL NOW ON:
02392 252171
www.auragas.co.uk



£100 Trade in offered
against your Old Boiler
with all New Installations



Ashley Electricians

Dalkieth, Woodmancote Lane, Woodmancote,
West Sussex PO10 8RD

- Local reliable electrician.
- All electrical work undertaken from sockets to rewires.
- Free visual safety checks & estimates.
- Fully insured & Part 'P' registered.
- Member of Trading Standards 'Buy with Confidence' Scheme.

Contact Ed Ashley on 01243 373195 or 07733 467536

ejashley@tiscali.co.uk
www.checkatrade.com/ashleyelectricians



*You imagine it,
we'll make it real...*



Specialists in bespoke luxury bathrooms

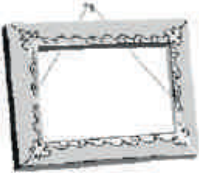
**From design to completion
Attention to detail guaranteed**
Come and visit our beautiful showroom
18 Elm Grove, Hayling Island,
Hampshire PO11 9EF

**Tel: 02392 466007
www.aqua-ltd.co.uk**

Showroom opening times: Mon - Fri 9am - 4.30pm Sat 9am - 12 noon

AQUA
BATHROOMS

Checkatrade.com
Where reputation matters



Petersfield Framing Studios

Picture Framing by

Andy Parks, MA, G.C.F.

- ◆ Collection and Delivery Service in the Rowlands Castle area.
- ◆ Guild Commended Framer (G.C.F.) with 23 years experience.
- ◆ Over 400 different mouldings and 200 mount boards to choose from.
- ◆ Very competitive prices.
- ◆ Picture framing tuition also available.
- ◆ Tel: 01730 269926.
- ◆ Visit: www.petersfieldframing.co.uk

"We Collect and Deliver Your Picture Framing"

bobbing wide

web design company
for the twenty-tens

Want a new website?

Need improvements?

Require upgrades or support?

Can you be **FOUND?**

herb@bobbingwide.com

02392 410090 (h)

07876 236864 (m)

www.bobbingwide.com

JIGSAW



PLAYSCHOOL

Where play and learning fit together

Registration Charity Number 1088132
Rowlands Castle St Johns CEC Primary School
Whichers Gate Road, Rowlands Castle,
Hampshire PO9 6BB

OPENING TIMES: Monday to Fridays 8.30am ~ 4.30pm

Ofsted inspected

Early Years Foundation Stage curriculum

For a prospectus, or to arrange an informal chat, please drop in or contact:

LORRAINE BRYANT ~ Manager on 023 9241 2095

'A QUALITY PLAYSCHOOL WITH AFFORDABLE FEES'

St. Johns CEC Primary School,



ELIZABETH TURNER
PROFESSIONAL
CURTAIN MAKER

CURTAINS, BLINDS OF ALL TYPES, PELMETS
AND VALANCES, CUSHIONS ETC.
TRACKS, POLES AND
FITTING SERVICE
FABRICS, TRIMMINGS
FOR FREE ESTIMATE WITH EFFICIENT AND
FRIENDLY SERVICE

TELEPHONE / FAX 01243 389939

**PROFESSIONAL PLUMBING
& HEATING SPECIALISTS**

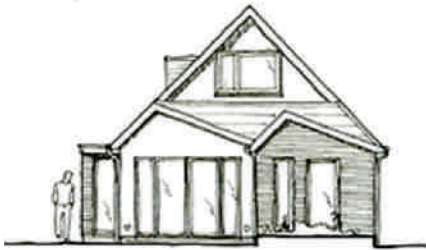
A. A. BARRETT

**51 Hatchmore Road
Denmead
Waterlooville
PO7 6TE**

**Tel: 023 92258057
Mobile: 07802321269**

engineering  **architecture ltd**

integrated building
design



experts in - planning applications
- building regulations approval -
structural surveys - for your home

t: **01730 352800**
e: mail@engarc.co.uk
w: www.engarc.co.uk

LAVANT HOUSE
CHICHESTER



Independent Education for Girls

- Thriving girls' day, boarding & flexi-boarding 3 – 18 years
- 100% pass rate at 'A' level, 89% A & Bs
- Outstanding pastoral care
- Excellent Sport, Music, Drama & Art
- Flexible bus routes
- Happy girls

01243 527211 office@lavanthouse.org.uk
www.lavanthouse.org.uk

A co-educational, independent day school for children aged 4-16



DITCHAM PARK SCHOOL

Where every child is known and valued

- Excellent academic results
- Caring, family atmosphere
- Small classes and individual attention
- Varied extra-curricular activities
- Extensive grounds on the South Downs
- Five minutes from A3(M) with daily coach service throughout the area

Telephone: 01730 825659 Fax: 01730 825070 E-mail: info@ditchampark.com
www.ditchampark.com

Registered charity no. 285244R exists for excellence in education

Enjoy Life to its Fullest with Home Help

Does someone you know need a bit of help to cope at home? Do they need some support after a stay in hospital?

Home Help can provide help with

- Housework, cooking, shopping
- Getting dressed and getting ready for bed, bathing
- Reminders about medication, help with exercises
- Nursing assistance if required, including overnight

For more information, please contact us on

Petersfield/Waterlooville 01730 710666

Midhurst/Petworth 01730 817222

Bognor/Chichester 01243 866004

or email enquiries@homehelpuk.co.uk



INVESTOR IN PEOPLE

Copy-editing and proofreading services

Pursuing excellence in the written word

Books • Websites • Brochures • CVs
Press releases • Biographies • Theses
Sales and marketing material

*Anything that requires attention to detail
Over twenty years' experience
Testimonials available*

Christina Harkness

christina.harkness@virgin.net
02392 412416
07855 484751



MORRIS BUILDING SERVICES

Sham Morris
113 Finchdean Road, Rowlands Castle, Hants, PO9 6EN

RENOVATIONS
ALTERATIONS
SMALL WORKS

ALL ASPECTS OF PROPERTY MAINTENANCE AND
REPAIRS, INTERNAL AND EXTERNAL

ROWLANDS CASTLE FREE ESTIMATES
(023) 9241 3130 07941 742598



STANSTED PARK
Rowlands Castle, PO9 6DX.
Telephone: 023 9241 2265
www.stanstedpark.co.uk

Open Easter to September :Sundays and Bank Holidays 1-5pm
June July August and September
from Sunday to Wednesday 1-5pm (last adm 4pm)
NEW MAZE OPEN WEEKENDS AND SCHOOL
HOLIDAYS 11am-4pm.

By appointment for Groups and Schools on other days.

Have fun & Help us by joining our team of volunteers.

Stansted Park is a wonderful venue for weddings and special events. Contact us for details

Arthritis Exercise classes and 1:1 sessions

*Improve your strength, mobility, posture and balance
*Tailored to your needs *Advice offered *All ages welcome

Free class taster session!
For further details call

Juliette O'Hea
MCSP MSc PGDip (Rheum)
Chartered Physiotherapist

Tel 02392 413885
mobile 07974 238787
Email physio@arthritisfirst.co.uk

Martin Steels Ltd

Optometrist

FOR PROFESSIONAL CARE AND ADVICE

OPENING HOURS MONDAY - FRIDAY 9AM - 5.30PM SATURDAY 9AM - 1PM

FULL EYE EXAMINATION

including Glaucoma Screening

Digital Retinal Imaging

Specialist advice on latest lens design

Contact lenses fitted

Budget and designer eyewear

NHS sight testing for eligible clients

Competitive prices on all frames

Stockists of sunglasses and most types of contact lenses

Bench. 
RODENSTOCK

TED BAKER
LONDON

CK
Calvin Klein

ELLE

EMILIO PUCCI



Bench.
Kids

F
FENDI

Silhouette

FLEXON
BY MARC O'MARA

ACUVUE®

Mau Jim
SUNGLASSES

NIKE



Your local optician
WITH THE LATEST EQUIPMENT
INCLUDING DIGITAL RETINA CAMERA

16 High Street Emsworth

Tel: (01243) 375141

— R J —
Winnicott
L I M I T E D

BUILDING CONTRACTORS
Industrial, Commercial and
Major Domestic Works.

Telephone:
023 9241 2741



Fax:
023 9241 2212

Joinery Mill, The Green, Rowlands Castle, Hants. PO9 6BW

HOME HARDWARE

Great Price, Friendly Advice – Your Local Store

EMSWORTH

Emsworth
Home Hardware
11 High Street
01243 376852

ROWLANDS CASTLE

Rowlands
Home Hardware
11 The Green
02392 412332

ALTON

Alton
Home Hardware
13 High Street
01420 85115

ROMSEY

Romsey
Home Hardware
38-40 The Hundred
01794 512141

Family Run Business

BATHROOM • CAMPING • CLEANING • COOKWARE • DIY • ELECTRICAL
HARDWARE • HOUSEWARES • IRONMONGERY • GARDENING • GIFTS
GLASSWARE • OUTDOOR LEISURE • PLUMBING • TABLEWARE • TOOLS

Open 7 Days a Week

CHILDRENS LEARNING CENTRE

RATED OUTSTANDING BY OFSTED 2011

Member of; 4Children

125 New Brighton Road, Emsworth

EDUCATIONAL NURSERY AND DAY CARE SERVICES

OPEN 50 WEEKS A YEAR 8.00AM - 6.00PM

We offer full time and term time care for children from 0 – 5 years, hours and days to suit your requirements. Also we provide holiday activities for children 3 – 5, school age children – 12 years and an after school club



Telephone: 01243 372015 or email: childrenslc@btconnect.com



Your local Hair and Beauty Salon

Offering an extensive portfolio of Hair and Beauty treatments by experienced, professional stylists and beauticians.

Including:

- Cutting
- Colouring
- Perming
- Barbering
- Special occasions

Plus, why not treat yourself to a spot of pampering in our beauty room. Our qualified beautician hosts a range of personalised treatments.

For professional advice and bookings contact Frances and her team on 02392 412606 or call in and see us at 3 Links Lane, Rowlands Castle.



Extra Mech (Services) Ltd.

We are dedicated to provide a first class service with modern Plant.

**We Operate between Bournemouth to the West,
Dover to the East and Oxford to the North.**

Our General Hire Fleet, to which new Machines are delivered monthly consists of Excavators, Loaders, Planers, Vibrating Rollers, Compressors, Dumpers, Compactor Plates and Skip Loaders etc.

Used Equipment ex Rental Fleet, which is well maintained with low hours is offered for sale to our customers, and we provide a Service and Breakdown cover if required.

We can Transport our Customers own plant up to 13.5 tones with our Scania and Mercedes Beavertails and for small items we have a 3.5 tones GVW with Tail Lift.

We can supply Rebated Diesel Fuel. To approved customers

Telephone 02392 412888 Fax 02392 412370

Or our 24-hour service on 07860137102

**Or email us with you enquiry to
info@extramech.co.uk.**

Or Visit Our Website on

www.extramechservices.co.uk

We are expanding out of Recession.

We need your enquiries to prove to you that we can continue to remain efficient, reliable and competitive.



Chantry House Interiors

featuring

The Rug Emporium



Furniture for Dining, Living, Bedroom
Solid Oak & Painted Pine Ranges
100's of Gorgeous Rugs in Store

Excellent Quality at Very Affordable Prices

28 North Street, Chichester, PO19 1LX
01243 776811
Shop@chantryhouseoak.co.uk

Richard C Arnold

Optometrists & Contact Lens Practitioners

Est 1890.

**See Well
Look Good
Feel Great**

Care • Quality • Choice • Service

- Eye Examinations, Eyeplan™, Private, NHS
- Children's NHS Eye Examinations are FREE
- Experienced, Friendly, Qualified Staff
- Extensive Frame Selection - Designer to Budget
- Bespoke Contact Lenses
- OCT Eye Health Scanner
- Optomap - Advanced Digital Retinal Imaging
- Orthokeratology - Vision Correction whilst you Sleep
- High Performance Sports Eyewear and Sunglasses
- Low Vision Advisory Service - NHS Accredited



Please ask about eyeplan: **Eyeplan™** and **Eyeplan™ Complete**; Monthly payment schemes for Eyecare and Eyewear with many Additional Benefits

For further information please visit our website: www.rcarnold.co.uk

For an appointment call **Petersfield: 01730 263302**
or call in at 3-4 Exchange Buildings, High Street,
Petersfield, Hampshire, GU32 3JU

Weekdays: 9:00 - 5:30
Saturdays: 9:00 - 5:00



**Richard C Arnold
Optometrists**