

Rowlands Castle Association

A blacksmith is shown in a workshop, focused on his craft. He is wearing a grey tank top with 'LONSDALE LONDON' printed on it and blue jeans. He is using a hammer to shape a glowing red-hot piece of metal held in a blue anvil. The workshop is built with white-painted stone walls, and various tools and equipment are visible in the background. The scene is lit with warm, focused light, highlighting the blacksmith and his work.

Spring 2012
Village Magazine

www.rowlandscastle.com

Welcome to Keats Country

As your only Estate Agency within the village for many years we are in a unique position to offer you experienced local professional advice on all aspects of Residential Sales and Lettings.

With a network of associated offices in Hampshire, Surrey, West Sussex and Mayfair London you can be assured your home will be seen by the largest possible selection of potential buyers or tenants.

Visit our new website at www.keats.biz or look at our available properties on www.rightmove.co.uk

Simply call us on **02392 413333** to arrange your free market appraisal or email rowlandscastle@keats.biz or just pop in to our offices 'On The Green'.



Keats

Rowlands Castle **02392 413333**

Alresford • Alton • Grayshott • Haslemere • Liphook • Midhurst • Petersfield • Mayfair

keats.biz



Village Magazine Spring 2012

RCA Chair's Report	4-5
Quiz Night	6-7
Landscape Character Assessment	10-12
Painting Society	13
Finchdean Steam Fair	14
Local History	15
Village Fair	16
Gardening Notes	18
Bridge Club	26
Church on The Green	27
Parking Problems	28
St John's School	30-31
Letters to the Editor	32-34
Horndean Musical Society	36
County Council News	39
District Council News	40-41
Parish Council News	42-43
Parish Hall Management Committee	44-45

The Village Magazine is published three times a year by the Rowlands Castle Association. The aims of the RCA are to act as a channel of communication for the Village, to conserve the character of the Village and to enhance the life of the Village.

Editor: Richard Milton, 3 The Green, Rowlands Castle, PO9 6BW
Tel: 02392 413292 email: editor@rowlandscastle.com

Cover picture: Conny Sullivan making a horseshoe in the smithy at Finchdean on 1 April. For a full report on the Steam Day at The George, see page 14.

Photo: Richard Milton

Rowlands Castle Association

Help us celebrate our birthday!

by Catherine Billam, Chair, RCA

A planning application has been submitted to Hampshire County Council to build up to 150 new homes between Wellsworth Lane, Finchdean Road and Uplands Road. A group of villagers form an action group to oppose it – and play a key role in getting the plan rejected. No it's not today - this all happened in 1972, and the action group realised that Rowlands Castle and Finchdean needed an organisation to represent residents. So, at a public meeting on 20th September 1972, the Rowlands Castle Association (RCA) was born. Its aims were to “to conserve the character of Rowlands Castle, to provide a channel of communication on matters of local interest and to enhance the life of the village”. The committee of the action group became the first committee of the RCA: Eugene Billam (Chairman), Frank Philpot (Secretary), Ray Reardon (Treasurer), Janet Cox (Newsletter Editor), Robert Foley, Norman Honey, John Key, and Bill Randall.

The name Billam is not a coincidence. The founder Chair of the RCA was my father, Eugene Billam, and I am proud to carry on the tradition started by that group of concerned villagers.

It's our fortieth anniversary this year and we've got a lot to celebrate. We'd like to invite you to join us in a special party on 22nd September – put the date in your diary.

We would like to put together a display showing the history of the RCA, so if you have been involved or were a committee member, we'd love to hear your stories and see any photos you have. Please contact me if you have anything to share:

chair@rowlandscastle.com or 023 9241 3143.

Before we get to our party, there are lots of other celebrations to come. In addition to the village May Day Picnic on 7th May and the Village Fair on 7th July, there will be special Diamond Jubilee celebrations on 2nd-5th June (see page 41) including a procession through the village. If you are part of a village organisation, or you would like to dress up as a family or group of friends, please to make an effort to take part in this and show the diversity of activities within the village. It should be a great day!

The RCA held our AGM on 1st March. Two long-standing committee members stood down, and I would like to thank Steve Protheroe and Christina Harkness for their hard work and good company over the years they have been on the committee. Kevin Connell has taken over the role of treasurer from Christina, and our committee now consists of: Catherine Billam (Chair), Sharon Broom, Fiona Charlesworth, Sue Connell (Secretary), Kevin Connell (Treasurer), Martha Dombey (Grapevine moderator) Gillian Lovegrove (Webmaster and Grapevine moderator), Richard Milton (Magazine Editor), Mike Winn. Alan Drinkwater is still our President. We meet about ten times a year, and if you are interested in joining the committee, please contact me.

I hope that you enjoy all the village events over the next few months.

Rowlands Castle Association

Your RCA Committee



Catherine Billam (Chair)
9241 3143
chair@rowlandscastle.com



Kevin Connell (Treasurer)
9241 3857
treasurer@rowlandscastle.com



Sue Connell (Secretary)
9241 3857
secretary@rowlandscastle.com



Sharon Broom
9241 3592



Martha Dombey
9241 0030



Fiona Charlesworth
9241 3865



Mike Winn
9241 2704



Gillian Lovegrove (Webmaster)
9241 2426
webmaster@rowlandscastle.com



Richard Milton (Editor)
9241 3292
editor@rowlandscastle.com

RCA Quiz Night

Another brainstorming Quiz Night

by Sue Connell

The second RCA Quiz Night, held recently in February, turned out to be a resounding success. A packed Parish Hall saw 15 teams do battle to take home a fantastic 1st Prize of six bottles of wine. As well as the winners, there were 2nd and 3rd prizes awarded to the runners up, and even a booby prize to the losers!

The quiz was organised by Committee members Sue and Kevin Connell, and was helped along by a specially created Sub Committee, intent on making sure the proceedings ran smoothly. Quizmaster Dave Richardson did a great job keeping the contestants entertained and under control, and everyone seemed to have a good time. To make the evening as varied and enjoyable as possible, there were a variety of quiz rounds, a large raffle, and a well-received fish and chip supper provided by Deep Blue in Bedhampton.

A fantastic profit of over £600 was raised, which will go towards the Sue Miness Outdoor Project at St John's School. This amount was helped along by the wonderful raffle, and our thanks go to all the donators from the village – The Castle Inn for a food and drink voucher, The Fountain Inn for a bottle of wine, The Robin Hood for a bottle of champagne, Style Hairdressers for a voucher, Home Hardware for a novelty presentation mug, Carraways for a box of chocolates, and Keyline for a garden spade, hammer and bucket of goodies.

As the Quiz Night proved to be so popular, with an early demand for tables, it is hoped that this event will be a regular inclusion to the RCA Calendar, to add to the Bonfire Night in November and the Children's Christmas Party in December.



Left: The Hall was packed. Right (clockwise) RCA Chair Catherine Billam and Steve Protheroe greet guests. Quizmaster Dave Richardson asks a tricky one. Organisers confer (Sue Connell Right, Daughter Tess Left). St John's Head, Kay Pennicotte-Henrie, gives a vote of thanks.

Photos: Richard Milton

RCA Quiz Night



RCA Children's Christmas Party

Magic and Mayhem!

by Sue Connell

Something magical took place at St John's Church Hall in December. Yes, it was the 2011 RCA Children's Christmas Party! A group of thrilled youngsters came along to once again be treated to a fun afternoon of magic tricks, party food and Father Christmas. Magic Mikey (Mike Fairall of the Magic Circle) held his audience captive with a fascinating array of tricks and some amazing balloon modelling! The eagerly awaited party food followed, and lastly it was back into the hall for a mini disco, games and the hugely anticipated arrival of Father Christmas (Alan Ayers) and his attentive elf (Ben Lucas). Presents were handed out, thanks were given, and the children went home happy and contented.



The Christmas Party was organised, as in previous years, by Nicci Lucas

and members of the RCA Committee, who ensured that the proceedings went smoothly and with festive spirit!



Above: Magic Mikey in action at the RCA Children's Christmas Party. Left, Mikey helps Santa and his Elf to hand out presents to children.

Photos: Steve Protheroe

Christmas Tree Festival

St John's Christmas Tree Festival



The RCA again sponsored a Christmas Tree in St John's Festival. (L to R) Committee members Fiona Charlesworth, Christina Harkness and Sue Connell decorate the tree while Steve Protheroe admires the result.

Don't forget Mayday Celebrations on The Green

This year, as always, there will be a Mayday picnic on The Green at Rowlands Castle. Organised by our Village Flagmistress, Barbara Openshaw, the celebration will be held on 7th May and will start from 12:00. There will be the Blendworth Brass Band to entertain us and a display of vintage vehicles to see. Burgers and beer will be available from our local hostleries—or bring your own picnic. All proceeds will go to support the Rowans Hospice.

LCS Photo Competition

LCS Photo Competition

by Richard Milton

The judges had some very tough decisions to make in choosing just four winners and four runners-up from an exceptionally high quality field. My fellow judges—Pat Carter and Steve Radcliffe—and I had to remind ourselves on several occasions that the pictures we were viewing were the work of local amateurs, rather than professionals, so good was the subject, composition and exposure.

A special word must go to the winners, Vera Whitlock for pulling off a double with her remarkable picture of local badgers, and her beautifully pastoral vista of cornfields surrounding the Village. Mark Seaman caught a moment in a million at fireworks night on the Rec, while Margaret Kilby did equally well to capture steam locomotive Tornado as it sped through the Village.

It was the closest run thing for our four runners-up, all of whom were considered as potential winners. Karen Urquart showed us the Green as we've never seen it before, from the top of the Big Wheel. Anni Cooter, aged 15, took the brilliant toadstool picture on her mobile phone! Many entrants took iconic St Hubert's as their subject, but Frances Fawcett's version had that certain something that drew unanimous praise from the judges. Finally, Yvonne Bish's Picnic captured perfectly the Village's idyllic charm. Our sincere thanks to all those who entered. We hope that many of the photographs submitted will find their way into the final version of the Landscape Character Assessment document, or onto the RCA website, and will form part of this important historical statement.

The Prize Winners in full

Vistas and Views

- 1.Cornfields - Vera Whitlock
- 2.Village Fair - Karen Urquhart

Wildlife

- 1.Badgers - Vera Whitlock
- 2.Toadstool in Skylark Field - Anni Cooter (aged 15, from her mobile phone)

Buildings, Structures and Objects

- 1.Tornado hits Rowlands Castle -Margaret Kilby
2. St Huberts, Idsworth - Frances Fawcett

Recreation

1. Fireworks - Mark Seaman
2. Picnic - Yvonne Bish

LCS Photo Competition

LCS Photo Competition — the winners!

Top: Cornfields by Vera Whitlock. Centre: Tornado hits Rowlands Castle by Margaret Kilby. Bottom: Badgers by Vera Whitlock.
Below: Fireworks by Mark Seaman.

Many congratulations to our winners and all who entered the LCS photo competition.



Landscape Character Statement

Let us know your views on draft

by Alan Drinkwater

The project is progressing well, and another article in this issue of the Magazine describes the views of school children from St Johns School about the countryside.

The LCS Group has now prepared a Landscape Character Statement for consultation with the Parish Council, residents and Local Authority officers. This consultation draft has been posted on the RCA website since March, and announced through 'Grapevine' and notice board posters. You can read the draft at:

<http://www.rowlandscastle.com/docs/LCS.pdf>

When it is available it will be important and will carry greater weight with the District Council, if a large number of residents both support its general thrust, and make helpful but critical comments about it.

Leading up to preparation of the consultation draft, the Group has held interesting discussions with local farmers and land managers including at Staunton Park and with the Forestry Commission. Funding is now complete with grants confirmed from both East Hampshire District Council and the South Downs National Park. On top of funds from both the Parish Council and the RCA Committee, £3000 has been made available for the project. The major expense will be publication of the final booklet to all households.

The formal launch of the LCS and award of prizes for the photo competition took place on Saturday 31st March in the Church on the Green hall and was well-attended. Should you wish to draw matters to the attention of the Group, please contact me, as the Group Co-ordinator. Alan Drinkwater

Top: Alan Drinkwater launches the Draft LCS at the Church on the Green. Left, Vera Whitlock receives two first prizes in the photo Competition from Councillor John Pickering.

Photos: Richard Milton



Rowlands Castle Painting Society

Art exhibition a great success

by Terry Devaney

For those of you who enjoy visiting an Art Exhibition which always delivers, the Exhibition and Sale that was held on the 17th and 18th March at the Parish Hall, Rowlands Castle was a major event. From 10am until 4pm on both days people from far and wide visited the hall to see the work of members of the Rowlands Castle Painting Society who put together an excellent show of work that was full of variety, styles and mediums. Especially prominent were paintings of popular local scenes which always appeal to those people who perhaps have a special connection to that place.

Some of the work was the result of the painting/picnic days out last Summer which members go on. This year, included in the exhibition, were paintings by the late David Holmes who used to be a member of the society. It was a day to remember and well worth the visit.

Jean Bradley, a member of the society also exhibited her work on the 5th 6th and 7th May on the Emsworth Art Trail. Her work includes fused glass, lampwork and paintings. Jean is also taking part in the Hampshire Open Studios in August. Members can start to look forward to some great workshops given by professional artists, always very inspiring for those artists who are always looking to grow in their art. Spring heralds the approaching painting/picnic days out and are always enjoyable. There are some great locations that are lined up to visit.

New members are very welcome regardless of ability, help and advice is freely given if wanted, it is a friendly society. To ask about joining please ring: 023 9241 2599



Finchdean Steam Fair

All the fun of the (steam) fair!



The George at Finchdean threw open its gardens to host a Steam Fair on 1st April. Hundreds came to enjoy the fun in glorious weather.



Top: The Twins try their hand as tractor drivers. Right, Mike Burr ridge gives rides on his scratch-built tank engine. Below: Dennis Hoad shows his steam delivery van. Below right; a magnificent scale model Burrell traction engine attracts admiring glances.

Photos: Steve Protheroe



St Giles Church, Blendworth

By Paul Marshman, Secretary, Historical Society

St Giles was the parish church of Blendworth. The site can still be seen and visited, where a small graveyard surrounds the foundations – but that is all that is left.

Cotton, when he made a sketch of the church in 1860, called it an extremely plain building, very small with a wooden porch and a belfry. He further observed that the chancel had been pulled down and blocked up, that there were 16 pews only and that in his time the churchyard was still used for burials. Services, however, were held at the new church, Holy Trinity, consecrated in 1852. Cotton also mentioned that the old church had been rebuilt in 1759.

So, there was a previous church and we have the list of rectors for Blendworth starting in 1303 with one Adam de Boudone and continuing down to modern times.

We have a seating plan from 1742-1743 which shows room for about 60 worshippers in all. The reason for the rebuilding in 1759 is thus not the usual one, that it was too small, because the 16 pews he mentions cannot hold many more than 80 at the most.

There is other evidence for the first church. A vestry book goes back to at least 1705 and an early entry of 1709 states that Edward Stallard was paid 2 shillings and fourpence for a bellrope. Other entries up to 1725 mention money paid for the repair to the fabric of the church. The nature of the materials used suggest that the church was of lath and plaster construction, a more likely reason for its replacement.

We also have a list of the monuments inside the old church. One was to Queen Anne and another to Rear Admiral Sir Michael Seymour, Bart. Who died in Rio de Janeiro in 1834 and was a hero of the anti-slavery movement.

According to legend the church had only a barrel organ, but it certainly had a bell in the belfry, as attested by Mr Stallard's bill for a rope. The bell was dated 1636 and in 1960 it was presented to a church in St Louis, Missouri.

The church was used as a mortuary chapel before being demolished in 1961, so there may well be a photograph in existence somewhere.



All that remains of the old St Giles is the churchyard. Do you have a photograph of the old church? If so please get in touch with the Editor or with Paul Marshman..

Village Fair

Roll up! Roll up!

by Jon Higham, Village Fair Committee

Roll up! Roll up! For the Rowlands Castle Village Fair 2012! The Fair committee are hard at work planning for the annual Fair on July 7th 2012. It only seems like the last one has just been packed up! All are welcome to a day of family fun, traditional children's Fair ground games and rides, local food and drink, crafts and competitions, stalls and catching up with friends old and new from the village and surrounding areas.

Following on from the success of last year, The Big Wheel is back! With this we hope to have one or two other traditional style fairground rides. The Big Wheel was a huge success last year and what a way to see the Village from the Sky. Not to be missed. Watch this space for our other rides!

For the energetic grown-ups, the famous evening Marquee with great musical entertainment will be here. Last year we had a fabulous BeeGees tribute band, this year we hope to follow up with a similar top quality Band. Last year we sold 400 tickets. Please bear in mind this has become a sell out in recent years, so early booking is advisable. This year we are encouraging visitors to use the Fair bar as much as possible as all the profits are ploughed back into the village. A great range of summer drinks will be available at reasonable prices.

As it is Olympic year, and it's Our Olympics in London, Olympic themes for Fancy Dress events, Games and general atmosphere will be encouraged! So if you want to be a Gold medal, Olympic Rings or Flame, please come along! If any villagers know of an ex-Olympian hiding quietly in our midst we would love them to come forward and officially open our Fair.



We are blessed by having one of the largest and most picturesque village greens in the country and every year this wonderful oasis of green allows us to put up our tents and stalls, set up the games and rides and continue the great tradition of the Fair. To get everything up and running takes a great bunch of volunteers and a generous group of local business who sponsor the event financially and everyone who comes to make the day so special with

Village Fair

family, relatives and friends. The Fair is run for the benefit of the village and its residents and the committee are keen to maintain the village atmosphere. One of the great aspects is that many of the local businesses engage in the Fair along with the residents and visitors thus making it such a special day. Any businesses, Schools, Clubs and parents who don't want to miss out and would like to join in and be part of such a unique day, please contact the committee.

Apart from providing a great day out for villagers and visitors, the Fair's main role is to help fund local projects. The profits that arise from the Fair go back into village schemes and groups. These have ranged from educational facilities, local school projects, the Scouts and Toddler groups. In the past, Castle United FC have received new kit, benches and play areas in the Rec have been installed along with an electrical supply on the Green and of course funding the annual Christmas Tree. This year we are hoping to help the Parish Council with setting up an outdoor gym in the Rec. which will be a fantastic facility to keep us all fit! This should be implemented within the next few months. If any local groups and clubs relating to young peoples activities are looking for help for projects, please let us know. The Fair has been firmly established as one of the main events in the village and whilst everyone involved in it enjoys the experience, it takes the effort of a dedicated committee and helpers to organise. We are always on the look out for village members old and new to jump on board. Whether you have Brains (figures) or Brawn (setting up/taking down), all are welcome. And on the following Sunday morning, helpers to clean up our Green are always welcome for an hour or two. We are a sociable bunch and meet about once a month to discuss Fair business in one of the local hostleries. So if you would like to be involved, please get in touch.

This page and previous page—scenes from last year's highly successful Village Fair. Be sure to put July 7th in your diary for this year.



Gardening Notes

Time to get back in the garden

by Pat Carter

We should all now be thinking getting out into the garden again after a very good December and January.

This is the first year that I have managed to get all the digging finished before Spring, and also washed all the pots and trays ready for use again.

The greenhouse is beginning to fill up with seeds and plants and potatoes are chitting. My big onions which were sown on the second of January this year are doing well (hopefully they will be entered at the Emsworth Show). I still try to keep my vegetables good for showing as Jeff would have been doing. Please enter your vegetables, flowers etc., in the local Horticultural Show and join us is at The Gardening Club in the Chapel Hall.

I noticed that the first daffodils on the Green were out at the end of January and that there were a lot of snowdrops in gardens around the Village.

In early February snow was forecast in all areas, but we were fortunate in only getting a light covering which was quickly followed by rain – which finished my hopes of getting some photos of the Village covered in snow! On February 10th it snowed again and this time I was able to get a few photographs.

February and March have been busy with sewing cabbage, lettuce, tomatoes, sprouts, leeks, and sweet peas, among other plants. It doesn't matter if you plant too many, as you can always do what I do, and take the surplus along to the Craft Fair.

I will also be getting my geranium plugs to pot on – but you do need a heated greenhouse to do these. I use a propane gas heater which is fairly cheap to run and maintain.

Looking forward to Spring

Pat Carter.

Rowlands Castle Camera Club

Pat Carter is starting a Camera Club to meet regularly at the Parish Hall. The club is open to everyone in the Village and the emphasis will be on taking great pictures with your ordinary camera—not on high technology or cameras that cost the earth!

To learn more and express your interest, contact Pat on 9241 3136

Rowlands Castle Gardening Club 2012 Programme

Feb 15 - Roses All the Way

Brian Kidd

Mar 21 - Gilbert White the Gardener

David Standing, Head Gardener, Gilbert White's House & Garden

Apr 18 - Stansted House Garden Centre

Nurseryman Graham Beck (plants for sale)

May 16 - Good News about Bees?

Gerry Fry (honey for sale)

Jun 20 - Growing Alpines for Small Gardens

Janice Bennetts (alpine plants for sale)

July 7- Village Fair and Horticultural Show

July and August

Garden Visits – details to be advised

Sep 19 - All about the Poppy

Sandy Worth, National Collection of oriental poppies Water Meadow Nursery, Cheriton (plants for sale)

Oct 17 - Bulbs, Corms and Tubers

Brian Kidd (bulbs for sale)

Nov 21 - All about Pruning

Ray Broughton, Sparsholt College & RHS lecturer

Dec 19 - Christmas social evening with wine and nibbles, bumper raffle + table decs demo

Rowlands Castle Gardening Club meets on the 3rd Wednesday of the month at 7.30pm at The Church on the Green, Rowlands Castle, PO9 6AB.

Membership is £8 pa. January – December. Members pay £1 entry for talks, non-members £2.

Local Life

How The Fountain is a centre of life for the Village

by Steve Protheroe

It was mid December 2011, and the RCA Committee had decided to drop in on the Fountain Inn for "a curry and a pint", (curry supplied by The Taste of India restaurant), to celebrate Christmas, and another successful year working on the RCA. The meal came promptly - which was just as well, as a few Steam Railway anoraks on the committee, left the pub at 8pm, to go to the station and watch 60163 Tornado rush through on its way back to London.

By the time we got back, there was a local group called "The Symbolics" playing traditional rock music from the 1960's and beyond, so just up my street! Their renditions of "Brown Sugar", and T-Rex's, "Get it On" were superb, and we all got "in the groove", and sat at the bar to listen to all their repertoire.

During the break I spoke to the lead singer Becca. She told me that the group had been up and running for about a year, and they all came from the Horndean and Clanfield area, although for work reasons Becca and her partner now live in Southampton, and dare I say he supports "The Saints"! They are a Cover band and play across the Solent area.

Herbie, at The Fountain Inn had given them the chance to play live in front of an audience on a number of occasions, and Sandra who works behind the bar, told me that they had increased their confidence a great deal in recent months, and could now sing and play a larger number of songs, which is great news to hear.



The music had to stop at 10.30pm, in accordance with the licence held by the pub, and true to form the local Community Police Officers popped in, at circa 10.15pm - to see that all was going well, and we were a well behaved audience! It was good to see that the local pub has such a good rapport with the police, and encourages young musicians to come along and play to an encouraging audience.

The RCA committee members had a great night out, and left the pub singing away to the music. Now, if you would like to get involved with the RCA

committee in 2012 - the RCA has its 40th Birthday in September, then why not speak to a committee member.

By the time you get this copy to read, I will have left the committee, as have completed my 5 years. It has been a great honour to serve the village community, undertaking the role of Treasurer for 2 years, and Chair last year, and the organiser of the iconic Bonfire and Fire-

works event in November for the last two years. The only thanks I needed, was to hear the "Oohs and Aahs", from the crowd as the fireworks reached a crescendo, and to hear everyone clap and cheer, as the last firework announced, "Good Night".



Page opposite: Members of the RCA Committee enjoy a pint or two. This page top: Sandra has a chat with two friendly local PCs. Left, Becca and The Symbolics entertained a crowded house with their repertoire of music from the 1960s and beyond.

Photos: Steve Protheroe



Keep Calm And Celebrate

THE QUEEN'S DIAMOND JUBILEE WITH ROWLANDS CASTLE

Saturday 2nd June

Children's Bake-off Competition

**Vintage Procession from St John's Church Around the
Village to The Green**

Fancy Dress Competition

Tea and Cakes at the URC and on The Green

Sunday 3rd June

Thanksgiving Service on The Green

Big Jubilee Lunch for all on the Rec Ground

With Games and Activities

Evening Entertainment (subject to funding)

**See Community Noticeboards and Grapevine
for further information**

**Collection Tins will be available in local businesses
please donate what you can**

Planning a busy Summer

by Yvette Mindel

After a busy autumn and an extremely hectic summer term planned, it feels like we're putting our feet up a bit in St John's School PTA this term. Our big target for the year is to raise funds for the Outdoor Play Equipment for Key Stage 2 in memory of our sorely missed deputy head Sue Miness. We've already had a successful bingo night, a disco, a Christmas gift fair and a cake sale and this term we have another disco and a cake sale (Friday 23rd March 3.20pm in the school hall if you fancy a yummy treat).

A big thanks also goes to the RCA who ran a quiz night in February and donated over £600 to the Sue Miness playground fund. Thank you to everyone who organised the night, attended or donated raffle prizes or money towards the night. We are really grateful for your generous contributions.

Summer sees us flat out again with a Diamond jubilee tea party, and then our major fund raiser for the year, our **Summer Fair on Saturday 16th June**, from 12 to 4. It may seem a long way off but get the date in your diary now. It's a great family day out with lots to do – games, performances, rides, bouncy castle, gifts, refreshments, BBQ.

The summer term ends with St John's Got Talent on Friday 29th June and our Summer BBQ on Friday 13th July. And hopefully at some point in the summer term, the opening of our new playground area.

If you would like any more information on us or the events we will be holding, please visit us at www.stjohnspta.com or come and see us at the school office.



RCA Chair Catherine Bil-lam (left) presents a cheque for £600 to St John's Headteacher Kay Pennicotte-Henrie, together with RCA Secretary Sue Connel and Treasurer Kevin Conell.

Photo: Richard Milton

St John's School

Our plans for outdoor learning by Kay Pennicotte-Henrie, Headteacher

Children, staff, PTA and governors are working together to develop a master plan for outdoor learning.

The children are forming the brief for the master plan through the School Council and a series of Design Charrettes, led by Johnny Rath of 'Fabrik' who has created intensive, hands-on workshops to explore design options. So far the children have suggested tree houses, bug-hotels, logs for seating and wild flower meadows to name but a few ideas. We have a core group of workers including local architects 'Butler & Butler'. We are very fortunate to have a beautiful site to work with. If any villagers are keen to be involved in this project we would love to hear from you. We intend to start changes this summer and plan further development for up to five years depending on funding.



St John's is making plans for outdoor learning. Johnny Rath of 'Fabrik' is helping members of the school council explore design options.



It is an exciting challenge that we would love to share with our village. Do feel free to pop into the office if you are willing to help in anyway.

This work will incorporate the play equipment provided by the 'Sue Miness' memorial fund. Thank you to the RCA for helping us raise funds for this cause; at an excellent quiz night.

Rowlands Castle Tennis Club

Tennis season starts soon

by Mark Cooter, Chairman, RCTC

Rowlands Castle Tennis Club (RCTC) is a small friendly club based around the three hard courts on the Recreation Ground.

Club Evenings commence on Monday, 2 April, and are then held every Monday and Friday from 6pm - 8pm until 14 Sept. The first Monday of every month will be supervised by a Club Committee member, so if you are interested in joining the club you might like to come along on one of these Mondays to find out more details and play some social tennis.

The club enters teams in the local leagues, has its own annual tournaments in many categories, and runs regular social tournaments, including this year its own 'Diamond Jubilee Tournament' and 'Olympic' competition. There is a growing Junior section, which has its own competitions and copes with a variety of player standards.

There are coaching courses for junior and seniors during the season. Details are sent out to members with their membership letters, but if you would like more information in the meantime the contact is: Sue Arnold on 023 9241 3316 Email: coaching@rctc.co.uk

One court is always available for public use during the day on Tuesdays and Thursdays. Bookings and payment for use can be made through The Castle Stores on The Green.

Court bookings for members are made on-line via the club website www.rctc.co.uk.

For membership enquiries contact the Membership Secretary, Michele Harpur on 023 9241 413566 Email: membership@rctc.co.uk

For general enquiries see the club website www.rctc.co.uk or contact the Club Secretary, Alan Best on 01243 389443 Email: sec@rctc.co.uk

Rowans Hospice

Three dates for your diary

by Jan Thomsett, Chair Havant Support Group

Quiz evening at Rowlands Castle on 27th April 2012 at 7.00pm Tables of 6 tickets £8.50 per person to include a light supper.

Coffee morning at 11 Greatfield Way, Rowlands Castle on 31st May (Bottle stall, cakes Plants.etc.) 10.00-12.00am

Bottle at the Village Fair (7th July.) If anyone has any bottles to spare (Wine, beer, water, sauces, shampoos or perfume - just so long as it is a bottle) - please contact me by 1st July at latest.) Either email Jathomsett@aol.com or telephone 92-412016

Rowlands Castle Bridge Club

Take your partners for Bridge

by Barbara Vincent

Bridge, the most rewarding of all card games, is fun! Bridge is a natural development of Whist but, unlike Whist, it has two elements. The first is the bidding (the 'auction') which ends with someone declaring a contract which he or she will then try to make when the hand is played (the second element).

Bridge is played worldwide by more than 50 million people. Some play at home, others in a club. For some the social contact is the main attraction, for others it is the competition! Bridge can be relaxed as you want; no one has to be an expert to enjoy it. However, it is an intellectual game and can be played with great skill. Rowlands Castle has its own thriving bridge club run by village residents Barbara and Graham Vincent. Started in 2004, the club meets every Wednesday in the large hall of the St John's church centre which provides an excellent venue including good heating, lighting and car parking. Attendances average 44 players (11 tables). Many players come from the village but the club also attracts people from surrounding areas. The club aims to provide a friendly but competitive atmosphere and to ensure less experienced players are not intimidated. Each Wednesday a duplicate pairs competition is played. If you play social bridge at home two pairs are sitting at the same table in direct opposition. Success or failure depends partly on skill but very much on the luck in the quality of the cards you are dealt. In duplicate pairs, each pair is not in direct competition with each other, but, instead, each pair is competing against every other

pair sitting in the same **direction** and who will hold exactly the same cards. So that bids are not overheard, bidding boxes are used. If you play social bridge at home and want to try your hand at duplicate bridge you are welcome to come along. Given 48 hours' notice, Barbara and Graham will find you a partner if you do not have one.

If you would like to know more about the club or have any questions then please call Barbara or Graham Vincent on 023 9241 2197 or email barbara@vincentgb.co.uk.

Left to Right: Sue Tribe, Barbara Vincent, Graham Vincent and David Halford enjoy a hand at Bridge.



Tuck Shop helps to fund Trip to Bowling Alley by Ken White, Presiding Elder

RoCY Nights at the Meeting Place are catching on. For many young people from the village and the locality the Meeting Place is the place to be on a Friday night. They enjoy Games nights, Remote Control Car Racing, Treasure Hunts around the village, Arts and Crafts nights and to add that little extra to a night of fun the Tuck Shop!

The Tuck Shop serves a dual purpose. It provides a wide range of goodies that are a great attraction when there is a great deal of frenetic activity going on but it also makes a small profit. This profit together with gifts from friends of the church and parents enabled a group of young people to go bowling back in November last year.

RoCY Nights, Rowlands Castle Youth Nights, are held once a month for young people aged school years 5 – 11. All young people who come within this age group are welcome to come along and join the young people who already eagerly look forward to these great occasions. For more details and the date of the next RoCY Night email rowlandscastle-youth@hotmail.co.uk or look on the notice board at the Church on the Green in the centre of the village.

“Please don’t close” This response came from some regulars who get together for Coffee and Chat at the Meeting Place. The discussion at the time centred on whether the centre should be closed between Christmas and New Year. The get together is very much appreciated by those who come each week. If you have not yet come along on Tuesday or Wednesday mornings why not do so? You will be made very welcome. It is not a club you must join but you will find that once you have sampled the relaxing atmosphere and a good cup of coffee or tea you will want to come again. We are open from 10.30 am until noon.

Youngsters at RoCY Nights, who meet on Fridays, went on a fun bowling night recently, thanks to the Tuck Shop.



Parking in Rowlands Castle

New officers to control parking

by Will Parsons, EHDC.

From April 16 on-street parking in East Hampshire will be managed by East Hampshire District Council and Havant Borough Council in partnership. The new set-up will see a team of Civil Enforcement Officers (CEOs) – the council equivalent of traffic wardens – patrolling the district, including Rowlands Castle.

Senior CEO Malcolm Bray, who has been working in East Hampshire’s car parks for ten years, said he and his colleagues were looking forward to their new role.

“This is a new job for us in East Hampshire but we’ve enjoyed our training and we are ready for it,” he said. “We know the people in this district are good folk who want the best for their community and having safer, clearer and less congested roads and town centres is something we all want. We’re just here to make sure everyone plays by the rules. We’re not here to try to catch people out but if people do park illegally then they should expect to receive a ticket.”

Up until April 16 on-street parking will continue to be handled by Hampshire Constabulary. East Hampshire is one of the last districts in Hampshire to take on these powers from the police. None of the current parking restrictions in the district will change under the new system.

Joining up with Havant Borough Council’s parking service has saved EHDC more than £40,000 in set-up costs and both organisations can expect to save a similar amount annually thanks to the partnership.

Cllr Hilary Ayer, Portfolio Holder for the Environment, is looking forward to introducing the service.

“The new CEOs will be on the look-out for hotspots in the district where parking regulations are often flouted. This is particularly good news for town centres such as Peters-

field and Alton which can quickly get snarled up if one or two drivers park thoughtlessly.

“We have been able to join this service with Havant Borough Council’s existing operation and that has meant we have saved money and have had the benefit of a wealth of experience and expertise in putting it together.”



Local motorcycle club helps Parish Hall

by John Bussell

Rowlands Castle Parish Hall is £500 better off thanks to a donation from Portsmouth Motor Cycle Racing Club.

The Portsmouth Club was formed in the late 1940s on the Isle of Man, at the TT Races by enthusiasts from the Portsmouth area.

Members have been involved in Motor Cycle events locally since 1950s when they ran Scrambles at Old Idsworth. In the mid 1960s, the club organised World Championship Motocross (the modern name for Scrambles) at Chalton and for the last 20 years have been organising about 6 “Hare and Hound” Enduros in the woods by Woodberry Lane, Rowlands Castle between March and October.

One event each year is run with Charity in mind and for the last 2 years the Hampshire & IOW Air Ambulance has received generous cheques. The money is mostly raised from prizes donated by motorcycle dealers. This year the club has already been offered £500 by a photographer to sponsor the 2012 event, where competitors ride continuously for 5 hours around a track that is between 4 & 5 miles long weaving back and forth through the woods.

All events are regulated by the Auto Cycle Union (the sports governing body), with rules that not only specify machines but also control of noise and environmental matters.

Over the years, many great times have been had at club social events; the latest was the 60th Celebration, held Saturday 19th January 2008.

For further information see the Club website at <http://pmcrg.org>

The presentation of a cheque for £500 to Kath Molloy, Chair of Rowlands Castle Parish Hall Management Committee, to assist with the upkeep of the Hall made by John Bussell, (left) club President and Simon Stevens, club Treasurer



St John's Church

Getting to know you

by Trevor Filtness, Associate Vicar

As a child growing up in the New Forest village of Sway, listening to my father talk about the time when he worked as a journeyman gardener at Stansted Park just before the last war, I would not have believed anyone if they had said that one day I should be the Vicar of Rowlands Castle. Not only that, but also that my secular work would be based above Hall's Garage with RJD Technology Ltd where I have been now for 6 years. However, as a man of faith, I should by now know that God leads us to the unexpected in life.

Unexpected as my move to Rowlands Castle was, I am absolutely delighted and privileged to be here and that delight is unabated after 6 months, which says much for the tremendous welcome I have received.

Although St John's is well blessed with a strong community of regular worshippers, it was very encouraging to meet so many new faces - new to me anyway - at our various Christmas Services and also during our Christmas Tree Festival. Thank you so much for your support for this latter event which raised almost £1400 for the Hampshire and IOW Air Ambulance and a similar amount for our mission at St John's. Another highlight was singing carols in the Fountain; thank you Herbie, an excellent evening!



Following Christmas we hosted the Riding Lights Theatre Company who illustrated the Nativity with the story of Nearly the Goat. This was much enjoyed by the young and the not so young; and it was an exciting way to put across the message of Christmas.

By the time this magazine reaches you we will be celebrating Lent which will end with Holy Week and Easter; look out for the notices about our services and events for these great festivals and do join us if you can. Then we have the Diamond Jubilee to mark and celebrate!

If I have one goal, it is that your Parish Church should play an active part in the life of the Village. There are, of course, so many excellent organisations already in existence in Rowlands Castle which add immensely to the quality of life and which are so well established. I would like to engage more closely in a way which is both unobtrusive and non-domineering but also very supportive. Of course many of our church members already participate in village activities on an individual basis, so in a way, our support is already provided.

But perhaps as your Parish Church we can provide additional support when and where it is needed on an individual basis or through support to Village organisations. So please never hesitate to contact myself or our office if you think we can help. Sadly I have not yet had the time to get in touch with all Village organisations but I hope gradually to introduce myself.

On a personal basis, even if you are not religious but you feel the need for companionship or just a chat; perhaps a relative would like a visit in hospital or maybe you are not a regular church goer but you would like to receive Holy Communion in your home again - please do not hesitate to get in touch. Whatever the case, we can provide you with a friendly listening ear, companionship and of course prayer at all times. And we would be delighted to see you in church at any time!

I speak to many people as I wander around Rowlands, sometimes with a 'collar' sometimes not, but I am always ready for a chat and it would be good to meet you. So please do say 'hello' if you see me around.

With every blessing
Trevor

Rev Trevor Filtness
Associate Vicar
St John the Baptist
Rowlands Castle
07785 568056 (Personal)
02392 410111 (Church Office)

Letters to the Editor



Sir, Many of the residents of this village objected to the proposed planning application for Keydell Nurseries to relocate to Mays Coppice Farm last year. As we were all relieved to hear, this application was defeated, but only by a single vote.

However, this application has now resurfaced with a new and improved plan which addressed all the concerns of the Council members who rejected it. I attended the exhibition to see if any of my concerns were to be addressed and I spoke to the experts present from the Highways Agency and Landscaping Architects as well as other residents. I came away from this exhibition with the feeling that this was just a glorified PR exercise. None of my concerns were addressed at all and even though I left comments, I felt that they would not make any difference at all. In fact I left the exhibition even more concerned than before.

The main objections as I see it are as follows:-

Whichers Gate Road is a narrow residential B road which is already dangerous due to speeding traffic and the weak railway bridge. There is a school, a pub and a garage at the top end of the road and traffic congestion already occurs there on a regular basis. As they are not allowed on the weak bridge, any HGV lorries bound for the proposed Garden Centre would have to approach from this direction, over the two small mini roundabouts and round the sharp corner to get into Whichers Gate Road. They would then have to negotiate the narrow road which often has parked cars, cyclists and horse-riders on it to get to the centre. The present site on which Keydell Nurseries occupies has excellent access straight onto the A3 with none of these difficulties. The Highways Agency has asked for traffic calming measures at the proposed site, but none for the residential part of the road.

Horse-riders and cyclists use this road for access onto the bridleway No 24. Increased traffic including HGV's would make it impossible for this section of the community to access the bridleway.

We already have two excellent Garden Centres within a three mile radius of the village at Stansted Park and Havant. We also have a well stocked hardware store which relies heavily on local trade. We do not need a third Garden Centre in the village.

The Parish Council and the Village Design Statement has always tried to maintain it's "green belt" – the strip of land which separates it from other neighbouring communities, so that the village can maintain it's individuality. Whilst a Garden Centre does not sound like a major development in what was previously farmland, it would automatically become a "brown field" site should it ever be vacated – exactly in fact what will happen at the Horndean site and what happened previously at Keydell Avenue. Houses can be built on these sites without the rigorous planning applications needed for green field sites.

Letters to the Editor

I would like to ask all residents of the village if they share the same concerns. If we are to defeat this proposal, we must have a co-ordinated opposition. I would also like to invite the Parish Council and District Council representatives to state whether they will be supporting or opposing this development.

Sincerely,
Tracy Woodall
Whichers Gate Road

Sir,
I am a resident of Finchdean Road and I am interested in gauging the strength of feeling of the Rowlands Castle population regarding the recent changes within the fields along the Finchdean Road.

As one of many regular walkers who have for years enjoyed the wonderfully diverse wildlife and flora of the species-rich grassland there, I am concerned about the current development by the new owner. Whilst appreciating that the fields must be managed economically, more extensive grazing is likely to irreversibly damage this beautiful wildflower meadow.

I am also concerned about the recent obstruction by fencing to the path that runs along the higher boundary of the field, and through the trees bordering Stansted Estate. Although not a 'definitive' footpath, it has to my personal knowledge been continually walked for more than 26 years. The previous owner had even provided a stile for public use. The path has been a popular route as it affords a better view up the valley and over the flora of the meadow than the formal OS path at the lower edge of the field. The path and fields have always been treated with respect by those using them.

My research indicates that it is possible to apply for such a well established route to be formally recognised on the 'definitive' maps. This could take some time and would need the support of a significant number of the local community. I feel sure that it is possible to keep this access open, and maintain perhaps some protected areas at least, within this grassland, while still respecting the needs of the landowner to make his fields pay.

sincerely,
Catherine Tyrrell

More Reader's Letters overleaf

Letters to the Editor

Sir,

Paul Marshman's article about Forestside (RCA Village Magazine, Winter 2011, p. 20) was most informative, but his theory about the origin of the name Diddy Bones Knapp is unconvincing. His suggestion is that "Diddy's Farm was taken over by a Mr Bone, who did not stay long, and a Mr Knapp took over".

There are three reasons why this is improbable. First, where locations are possessively named, the nature of the place generally appears as part of the name – Drew's Farm, Rowland's Castle, Whicher's Gate – or, if that in due course disappears, the possessive S remains ("I'm just off to Rowland's!"). It would be very odd if just Mr Bone's name kept the possessive S.

Second, possessively-named locations usually either permanently retain the name of the first owner, or have that name replaced by the name of a subsequent owner. For two owner-names both to stay attached to a single location must be very rare. For three successive owner-names to remain together in the name of one location would be unique.

Third, there is a more plausible explanation for the origin of "Diddy Bones Knapp".

"Diddycoy" is a word for gypsies with mixed Romani blood. A knapp is the crest of a hill. Even within recent times that location has been used for travellers' caravans – so it is entirely likely that many years ago gypsies regularly set up their encampments there and that, after they moved on, the bones of the animals they had eaten were left scattered around the remains of their camp-fires.

In other words, Diddy Bones Knapp probably means Gypsy Bones Hill.

Yours etc.

Antony Edmonds

Finchdean

We want to hear from you.

Do you have something to say? The RCA Village Magazine belongs to the whole Village. And serves as a channel of communication between Villagers. If you have a point of view, write a letter and we'll publish it.

Simply write to Editor, RCA Village Magazine, 3 The Green Rowlands Castle, Hampshire PO9 6BW. Email to editor@rowlandscastle.com

Domestic Heating Advice

That ‘boiler time’ of the year

by Nic Radcliffe

Well, it's certainly been that ‘boiler time’ of year recently. The calls started coming in November as the temperature dropped and boilers across the land were switched on. Some boilers would cycle on and off repeatedly, some were leaking, some just didn't do anything. For some customers, this was an inconvenience, for others it was a major problem resulting in no heating or hot water for their children. Someone wrote in The Guardian recently “I have a theory that you're not really an adult until you've experienced boiler bereavement.” An interesting thought!

She goes on, “First, there's denial (“It'll just be the pilot light, I just need to press this button a few times”), anger (as the landlord screens your frantic calls), bargaining (with a succession of plumbers you find in the Yellow Pages whose names all begin with AAAA), depression (no one will come out until next week) and finally acceptance (of call-out charges hovering around £200 per half hour or part thereof). Most importantly, there's the realisation that your home isn't the impregnable fortress you had complacently assumed it was.” An amusing story but not quite so amusing if it happens to you! Luckily it doesn't have to be this way. A boiler serviced during the ‘non boiler time’ will keep it fit and healthy.

Hopefully you've been one of the lucky ones and your boiler started without problem, but smaller niggles can still be troublesome and many people don't realise that many of these can be fixed fairly easily. I've had a few calls about radiators that are only lukewarm or cold. This is usually a problem of air in the system, and by getting rid of this and balancing the radiators properly they should all warm up evenly.

One final thing for those who read my last article, I spoke about water softeners. I have fitted several now and I'm getting feedback from some customers. People seem to be very happy for a few reasons. Not only have they seen a great reduction in limescale build up around taps and in kettles, but the limescale that was round the spout of the taps is being broken up and disappearing. Another thing often mentioned is the new cleanliness of shower screens and doors. Reduction in the hardness of the water results in less streaking, which of course means less cleaning – always a bonus!

I hope this has been helpful. If I can help you at all, please call me on 07905 908143.



Horndean Musical Society

An exciting season continues by Irvin Draycott, Hon. Treasurer

We are entering the second half of a programme of concerts which will continue until the first Thursday in July. Members have been entertained by some of Europe's finest musicians and with the support of our members we hope this will continue in the seasons to come.

Our January concert was given by the Monington Trio - Karen Kingsley, piano Robert Blanken, clarinet and Sue Anne Emerson, cello. They gave an outstanding performance of two previously unpublished works by local modern composers writing in the Classic style.

The first to be performed was by Andrew Hadfield from Waterlooville. He was educated at Portsmouth Grammar School, a former chorister of Portsmouth Cathedral Choir and currently reading music at Cambridge University. Andrew introduced his composition, the trio in F Minor as a dialogue between the clarinet and the cello with the piano joining in. The Monington Trio gave their "all" to an outstanding piece of music and the applause from the audience "raised the roof"!

After a well deserved interval the evening continued with the second piece of music to be premiered introduced by the composer, Tony Matthews from London. Tony described himself as a self-taught musician. His work was the trio sonata in F Major in three movements. We were entranced by another outstanding composition which was, once again, received with rapturous applause.

On 2nd February we were treated to the music of Haydn, Beethoven, Tchaikovsky and Shostakovitch, played on the cello by the celebrated Mikhail Lezdkan, accompanied by Eunice Pike. After the interval we enjoyed a sonata composed by Frederic Chopin. for cello and piano, Opus 65 in 5 movemets.

The next concert will be in a different vein. On 1st March we will be entertained by Havant Light Opera who will sing a programme of songs, old and new.

We look forward to a full house - visitors are always welcome at Blendworth Church Centre on the first Thursday of nearly every month starting at 7.30 pm.

For further information telephone 02392 412480.

Horndean Musical Society

HORNDEAN MUSIC SOCIETY

Provisional concert programme for the Season
March –July 2012.

Concerts take place at the Blendworth Church Centre, Blendworth Lane, Horndean, on the first Thursday of the month beginning at 7.30 p.m.

- | | | |
|-----------------------|---------------------------|--|
| 1 st March | Havant Light Opera | John Butt and the HLO Choir. |
| 5 th April | Richard Moore | with the ANEMOS Wind Ensemble |
| 3 rd May | Music Students | from South Downs College
Director, Peter Rhodes |
| 7 th June | The Blendworth Brass Band | – in concert mode |
| 5 th July | A Harp Concert- | Details to be advised later. |

---000---

The full programme for each concert will be available in advance.

For the 2011 – 2012 season members will pay £5.50 at the door,
visitors £6.50

Membership subscription £3.00

Refreshments are available at the intervals

Walking to Health

Walk leaders wanted

The Walking for Health initiative is looking for enthusiastic people to come forward and train as walk leaders.

East Hampshire District Council supports the scheme which aims to improve people's health and wellbeing through regular walks led by trained volunteers.

As well as the health benefits the walks also encourage those who do not have the confidence to go out walking on their own to get out and meet other like-minded individuals and make new friends.

Walking for Health is co-ordinated by Louise Christie, Active Lifestyle Co-ordinator at EHDC. She said: "We offer this one-day fun and informal training day for free and at the end of it you will receive a certificate qualifying you to lead walks safely.

"After that you will be fully supported to become integrated as a volunteer with one of your local walks, or even start up a new one if you wish.

"The commitment we ask from you is totally flexible. Some people like to get involved every week, while others simply want to help out once every few months. The choice will be yours.

"Also you do not need to be extremely fit to become a leader, you only need to be able to walk for about an hour, but the qualities you do need are to be friendly and approachable with a desire to help people.

"The Walking for Health scheme has now been running in East Hampshire for the last seven years and has continued to go from strength to strength. We now have 17 regular walks which anyone can attend for free. The walks last for about an hour and people are able to walk at their own pace.

"The positive feedback that I have received from both walkers and leaders over the years has been tremendous and it has helped many individuals overcome isolation, or the loneliness of suddenly becoming widowed. Most groups also organise social events so the benefits of becoming involved with a Walking for Health group are endless."

The next free training day is running on Monday 26 March between 10am and 4pm at the EHDC Council Offices in Petersfield. As part of the training volunteers are taken for a short walk through a beautiful nature reserve by the River Rother. Lunch is provided.

To book a place or for further information about Walking for Health, call Louise Christie on 01730 234067 or email louise.christie@easthants.gov.uk or visit our website at www.getactivenow.org.uk.

Traffic issues in Bowes Hill

by Sam Darragh

Greetings,.
In my last article I asked residents of the village to contact me with their thoughts about Footpath 13 which runs off Wellsworth Lane. I have had many villagers contact me and for that I am very grateful. After carefully considering each point I have decided to support the move to adopting the straight line (the original path was curved but was made straight many years ago).

I have also decided to support the move to make this a bridleway with no vehicular access. I understand this is also the view of the parish council. I believe this course of action allows all types of users to enjoy the footpath whilst keeping off any motorized vehicles that would damage it.

This has yet to go to Hampshire County Council's regulatory committee to be formally decided but in the meantime I will be working with our countryside access team to ensure that the footpath is well looked after so everyone can enjoy it.

In January I had the pleasure of canvassing homes in Bowes Hill with new parish Councillors to gather information about speeding along this road. In doing so I have been contacted by residents from nearly every street in Rowlands Castle to discuss their speeding concerns. This is clearly a problem across the whole village and I will be looking at all of the gateways into the village.

In Bowes Hill, the information gathered has been really useful. I will be liaising with our highways team to look multiple improvements which I'm hoping will include; visual improvements to the Wellsworth Lane junction, white lines on the corner of Uplands Road to encourage commuters not to park on the corners and install school crossing signs near the station.

I have also been working with the County Councillor for the neighbouring Butser Division to get a speed limit reduction outside the Magpie Cottages. At the moment, traffic travels from 60mph to a 30mph limit at Bowes Hill. However we all know that cars rarely slow to 30mph by the time they have passed the sign. We have been successful in getting a reduction to 40mph which will not only benefit the residents of Magpie Cottages, it means traffic will be 20mph slower when it reaches Rowlands Castle.

If anyone wishes to contact me about any of these issues or any other they have, please do so.

Please feel free to contact me

Sam Darragh

County Councillor Catherington (Horndean and Rowlands Castle)

Sam.darragh@hants.gov.uk 02392 592072

The fight against urbanisation by District Councillor, Marge Harvey



Dear Fellow Residents,
I hope you all had a very good Xmas and I wish you all a very happy and healthy New Year.

To start this article, I should advise you that the application for the Keydell site on Whichers Gate Road is due in any time now and I have been told that it is a full application and not an outline. This means that it will be detailed and we will know exactly what they are asking for.

My stance is still the same as it was. I do not feel that this is right for Rowlands Castle. It will urbanise a very rural road and the light pollution is not right for an entrance to our village, which is, at the moment, quite dark and tranquil. There are many things that are not right and to move this site from Horndean, where it is on a road that is easily accessed from around the area and bring all that traffic to our village, on a road that is rural is just not right. This, just because they would like the site that is owned by Keydell for housing. Why should we take this when there are other sites in Horndean that could take many more houses than this site? It is a windfall site and not a reserved site, so they do not have to build it there.

Anyway, when this does eventually come to planning and to the planning committee at East Hants, I hope that as many of you will come and support me.

The Keyline site is still being looked at and I should know very soon if East Hants are going to accept it or not. It will still go to committee because there were so many people who wrote in about it. My only input is that the developer should be putting affordable housing on the site as part of their submission. If they do not, then I think it should be refused as this is against East Hants policy. I am not against this site being developed, but it MUST be right for the village.

As you probably know by now, the Parish Council are going to appeal over the Whichers Gate Garage.

I fully support this action and have told the parish that I would be quite happy to speak at the appeal but it does seem that my help is not needed.

There are many things happening around the village, we seem to have had some antisocial behaviour and a little crime, but nothing that you should be unduly concerned about. My only advice is to keep your cars and doors locked as many of the burglaries have been opportunists, so let's not make it easy for them.

Links Close parking is still on the agenda and after many meetings with Radian, I think we are getting there.

District Council News

Before Alan Todd from Hampshire retired. I took him to see just how bad the road is in Uplands Road and he assured me that if your County Councillor supports it, it will be re-surfaced as a priority, so I will make sure that I contact Hampshire in March.

The Crematorium application is on the agenda for the March meeting and I will be speaking on behalf of the village. I am opposed to the traffic going down Whichers Gate Road, because the Keydell site could get permission and a very rural road will be swamped with traffic. The other reason is because it breaches the gap and the government inspector said that this gap must be maintained and strengthened. It is in the PUSH policies and in EHDC policies and hopefully this will be enough to decide it.

I am very pleased to hear that the parish council have decided to place the parish hall back with them. I completely support this action and wish them well.

Don't forget, that if you have anything that you think I can help you with, you only have to call or e mail me, you will always get a reply.

Enjoy the Spring weather. Marge.

RCA 40th Anniversary



ROWLANDS CASTLE ASSOCIATION

Party

22nd September

Put the date in your diary

Parish Council News

No increase in precept by Clerk to the Council, Lisa Walker and Parish Council Chairman, John Pickering.

It has been nearly a year since the Parish Council elections and time has flown by. We now have a full complement of 9 councillors – including 4 co-opted members, one of whom is Steve Protheroe, representing Finchdean. We welcome them all and they are already fulfilling significant roles on the Council. The Council is focussed on the issues facing the Parish, and seeks to work with residents to address and resolve them. We look forward to fostering even greater collaboration with other village organisations, especially through the Queen's forthcoming Diamond Jubilee Celebrations in June. We are pleased to learn there are moves afoot to organise street parties and other events throughout the Rowlands Castle and Finchdean area

Thanks to some efficiency gains and minor drawings upon reserves, and mindful of the straitened economic times, the Council agreed a nil increase from last year's figure in setting the Precept for 2012/13. The budget for tree work and open spaces maintenance has had to be increased significantly and will be spent on a prioritised basis.

The Recreation Ground offers an important area for children and young people, which we want to continue to enhance. We are sorry some of the equipment has been out of use recently. Steve Protheroe has taken over responsibility for advising the Council on this. We expect that most repairs to existing equipment will have been completed by the time you read this article.

Despite significant use for cricket, football and tennis, the Recreation Ground produces relatively little income given the levels of expenditure incurred in providing those facilities. Some argue that this will be alleviated when the Pavilion has been brought up to a better standard so that clubs will be prepared to pay higher fees. The Council has been giving further thought to the plans for the Pavilion in the light of the costings recently obtained. These point to a potential overall cost of some £250,000. While some grants should be available, the Council must consider whether it would be reasonable to envisage incurring a debt of perhaps £150,000 in order to go through with the existing plans. Bill Wilson has undertaken a substantial review of the costings and possible funding opportunities for improving the Pavilion and will shortly report his findings and recommendations to the Council.. The need to improve the Pavilion is not in doubt. How we go about it must remain a matter for further, urgent, consideration..

The Localism Bill was passed as an Act of Parliament in November last year, and its significance cannot be underestimated. One of the Act's stated aims is to give local communities more of a say in future planning decisions. This will require the production of a Neighbourhood Development Plan which would build on the existing Parish Plan and Landscape Character Assessment. Resident input to this will be important. As a first step, the Council will be discussing EHDC's Draft Core Strategy at its meeting on 5 March.

Whilst on the subject of planning, we understand Keydell will soon be submitting a full planning application for the site near Mays Coppice Farm, and will be conducting an informal consultation with residents prior to this. The Council will keep everyone abreast of developments on this matter, and any further information we have regarding the Keyline site as well.

The Parish Council has appealed against EHDC's decision to grant Shell a Licence to sell alcohol at its Whichers Gate petrol station, (or should we say convenience store!). The challenge is on the question of the validity of the technical data Shell submitted to the EHDC Licensing Committee. Much of the Council's discussion regarding this matter has had to take place in confidential session because it concerns ongoing litigation. At the time of writing, Shell had requested that the Hearing scheduled for 24 February should be postponed.

Residents have responded well to Police encouragement to report crimes and anti-social behaviour to its 101 number. We are grateful to Hampshire Constabulary for their increased police patrols within the area and, although the Parish is not crime-free, we have seen a corresponding drop in general crime levels. Unfortunately, the same cannot be said of speeding issues in the village and the Council's Traffic Committee will be exploring further options to tackle the problem for the good of the whole village.

Lisa Walker, our new Clerk, is settling in well to her new role and is very grateful for all the support and goodwill she has received from councillors and the parish as a whole. She is extremely busy getting to grips with all the procedural and administrative elements of the role, whilst also focusing on the strategic challenges that the parish may face in the future. Sadly, her Administrative Assistant, Claire Locke, left her post at the end of last year and she will be sorely missed. We are grateful to her for all her hard work and the knowledge she developed in her role, and wish her all the best as she extends her legal work to a full-time basis. Lisa will take over her duties, including management of planning matters, and her hours will increase accordingly. Whilst there are no plans to replace Claire at present, some regular duties may be out-sourced. Nowadays, most residents contact the Parish Office by telephone or e-mail and therefore visitors in person are comparatively few. As a result, it has been decided to reduce formal Office opening hours to 2 specified mornings a week, with a 'by appointment' system operating at other times. This move will enable Lisa to better plan her work schedule and provide a more efficient service to the Parish.

We are grateful to David Symonds for holding the fort on the Parish Hall Management Committee, and welcome Kath Molloy as its new Chair. There remains uncertainty as to the correct identity of the Trustees for the Parish Hall, whether it is the Parish Hall Management Committee members or the Parish Council as a corporate body. We believe it is the Parish Council but that is not how it has been reported in recent years. To clarify the position, the Council has resolved that, subject to the agreement of the Parish Hall Management Committee and the Charity Commission, the Trusteeship, but not management, of the Hall should be clearly vested in the Parish Council.

Finally, following a Council recommendation last August, we understand EHDC will shortly be writing to the Boundary Commission supporting the suggestion to reunite Finchdean with Rowlands Castle for the purposes of both District Council and National Election levels.

Parish Hall Management Committee

Come and join us

by **Kath Molloy, Chair, PHMC**

I'm not quite sure how I found myself in this position of Chairperson of the The Parish Hall Management Committee, but I will do my very best.

Firstly, I'm very pleased to announce that a total of £550.50 was raised at the January jumble sale, which will go towards the upkeep of the Hall. Special thanks must go to Barabara Openshaw and all the members of the Womens Institute who gave their time and energy on the day.

I would also like to thank the gentlemen and dismantled the trestle tables, and of course thanks to all the Villagers who contributed their unwanted goods for the sale (however, the necklace was not gold!)

The departure of Alan Craggs was a huge blow, and I am sure that everyone will agree that his contribution to the Hall and the improvements that have been made will not be forgotten. So thank you, Alan, for all your hard work and dedication over the past years.

Apart from the regular users, December and January have been a very quiet period as far as bookings were concerned, perhaps we can look forward to more business now that the Spring weather had arrived.

One extra improvement that has been made is that the WRVS cupboard has had a makeover to give the volunteers more room.

My thanks to Brian Aherne who has been my rock, fixing all those small maintenance jobs that have needed attention and were overlooked in the past. A few new rules have been introduced which will become apparent as time goes by.

I would like to thank everyone for all the support you have given me as this is very much appreciated.

Finally, we are looking for new Committee members, so if you are interested, do contact me—we will welcome you with open arms!

My motto for now is Give and Take—we all need the Hall.

Emsworth Cookery School



Don't know where to start in the kitchen,
or needing inspiration with some new culinary ideas?

See our website for details of adults and children's
classes for all abilities - also offering vouchers, parties,
one-2-one and get-togethers with a difference

www.emsworthcookeryschool.co.uk

or ring Barbara on 01243 371407 / 07733 262126



DITCHAM PARK SCHOOL

Where every child is known and valued

TOP OF THE TIMES GCSE LEAGUE TABLES FOR HAMPSHIRE 2012

A co-educational, independent day school for children aged 4-16 near Petersfield, Hampshire

- Caring, family atmosphere
- Small classes and individual attention
- Wide range of extra-curricular activities
- Excellent sports facilities including extensive grounds and sports hall
- Wonderful location on top of the South Downs near Petersfield
- Daily coach and minibus service throughout the area



"The progress made by pupils is excellent"

For further information please contact the school office

☎ **01730 825659**

admissions@ditchampark.com
www.ditchampark.com



Charity Food Drive for AGE Concern

Bring a bag of non-perishable food and join for **FREE***

LADIES ONLY
30 Minute Workout
All Ages



Fun, fast fitness that works!

023 9266 3030

Curves Portsmouth, Third Floor,
120 London Road, Portsmouth,
Hants, PO2 0NB

www.curvesportsmouth.co.uk



023 9225 0006

Curves Waterlooville,
27 London Road, Cowplain,
Hants, PO8 8DF

www.curveswaterlooville.co.uk

*Offer based on first visit discount, minimum 4 months Direct Debit programme. New members only. Not valid with any other offer. Valid only at participating locations from 1/3/12 - 31/3/12. © 2011 Curves International, Inc.

Book your class today!

Total Woman Dance & Fitness Centre

Launching with:

Zumba

Pilates & Yoga

Legs Bums & Tums

Ab & Back Blaster Classes

Professionally Qualified Instructors

Special Concessionary Rates for Curves Members

Competitive Rates

Bright and Friendly Atmosphere

For details and for class schedules

Call: 02392 25 0006

Total Woman Dance and Fitness Centre, Top Floor Studio,
27 London Road, Cowplain, Hants, PO8 8DF. (Above Curves)



ZUMBA FITNESS

NOW OPEN in Cowplain!



Visit today

**AVS FENCING
SUPPLIES LTD**



Stansted Sawmill

- Fence Panels • Concrete & Timber Fence Posts
- Raised Veggie Beds • Railway Sleepers - 10 types
- Boarding and Cladding for sheds, stables and garages
- Oak Gates & Doors • Oak Beams • Chestnut Products



Interesting Products for your Property



AVS Fencing Supplies, Stansted Sawmill Stansted Park Rowlands Castle Hants PO9 6DU
Tel: 02392 412445 www.AVSFencing.co.uk



Inspiring gardens....
from concept to completion

Landscaping • Bespoke Designed Gardens • Planting



Extending your home into your garden

FREE CONSULTATION AND QUOTATION

Tel: 02392 413865 Mobile: 07767 867603

office@charlesworthoutside.co.uk www.charlesworthoutside.co.uk



HEATING • PLUMBING • BATHROOMS

I can help with all your boiler, heating, plumbing and bathroom needs.
 And I live right here in the village, so can call round at short notice.

Here's my number.
Please keep it in a
safe place.

07905 908143



fabulous
flooring
with a
perfect fit!



visit our website to
find out more...

www.waterloovillecarpets.co.uk

Service is the secret of satisfied customers and satisfied customers are the secret of our 44 year success.

- Fabulous Carpets from Greendale and Brintons
- Crucial Trading Specialist
- Fabulous Vinyl Tiles from Amtico, Karndean & Cavalio
- Warm & Cleanable Ceramic Tiles from Cavalio & Amtico
- Fabulous Pergo Laminate Floors with New Designs
- Oak Floors – Engineered Planks and Solid Click
- Fabulous Bamboo & Cork Floors
- 12 MONTHS INTEREST FREE CREDIT on all products



We promise you a flooring that fits your requirements, fits your budget and fits beautifully into your home. Please call in, anytime.

A pleasure to come home to.....

31 The Square, Petersfield, Hampshire Telephone: 01730 262223/267381 Fax: 01730 267394
email: sales@waterloovillecarpets.co.uk www.waterloovillecarpets.co.uk

Friendly,
personal
service

Value for
money

Reliable

Emphasis
on quality

Always
professional



Print. Perfected

You can count on us

Walton Road, Portsmouth, Hampshire PO6 1TR
T: 023 9233 4900 F: 023 9233 4901
E:enquiries@bishops.co.uk

bishops.co.uk



Moisture in your double glazing? don't replace it, repair it!

idealwindowsolutions 

We repair PVCu, Aluminium, Timber windows and Doors

- Fogged double glazed glass units
- Window and door hinges and stays
- Leak & draught repairs
- Local Authority Approved
- Handles/mechanisms repaired & replaced
- Trading Standards Buy with Confidence Approved

NO Call out charge with Free Quotations & Advice

IWS are local specialists in the repair, upgrade and maintenance of double glazed windows and doors.

We supply & install windows, doors & conservatories and carry out all other window & door repairs

Local company with fantastic Checktrade feedback from over 800 satisfied customers



WE COVER HAMPSHIRE AND WEST SUSSEX
FREE PHONE 0800 731 8761
www.idealwindowsolutions.co.uk

IWS Ltd, Unit 12 Blackbrook Business Park, Blackbrook Road, Fareham, Hampshire PO15 5DR



Need help with the cleaning?

At Bizzy Bodyz we're here to do all the jobs you hate

We can do:

- a weekly clean
- one off deep clean
- post builder's clean
- end of tenancy clean
- washing & ironing (free collection & delivery)

Give us a buzz now on

023 9269 0101

www.bizzybodyz.biz

microsomma



IT Support for Home & Small Business

Comprehensive computer hardware & software support

David A. J. Somma BSc

Remote support & call out services available

Please see my website for local recommendations

david@microsomma.com
www.microsomma.com

tel: 0845 - 0170772
mob: 07796346526



Caroway
Est 1980

**For all your
fencing needs**

Suppliers & Erectors of Every Type of Fencing Including:
Chainlink • Palisade (wood or metal) • Panels
Closeboard • Weldmesh • Posts (concrete or wood)
Security Fencing • Trellis • Gates



We also offer a friendly reliable and competent skip delivery service to all local areas. Our skip sizes are mini, midi and maxi and we also provide a Grab service.



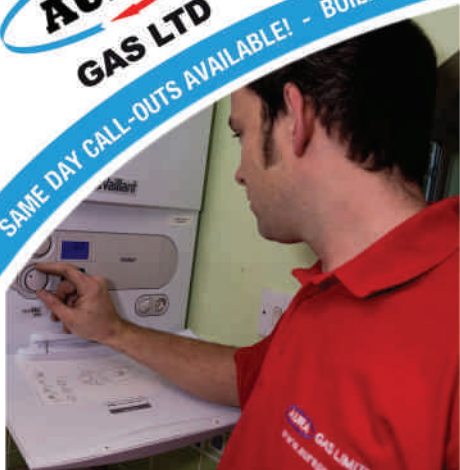
**TRADE
AND
PUBLIC
WELCOME**

Visit our website for any fencing prices or call 023 9241 2768
www.caroway.co.uk

Caroway, Station Yard, Bowes Hill, Rowlands Castle, Hants PO9 6BP



SAME DAY CALL-OUTS AVAILABLE! - BOILERS INSTALLED WITHIN 48 HOURS



BOILER MAINTENANCE FROM
£8.95 A MONTH

BOILERS INSTALLATION
CENTRAL HEATING
LPG & OIL WORK
5 YEAR WARRANTIES
SERVICES AND REPAIRS

**CALL NOW ON:
02392 252171**

www.auragas.co.uk



£100 Trade in offered *Terms apply
against your Old Boiler
with **all** New Installations



Ashley Electricians

Dalkieth, Woodmancote Lane, Woodmancote,
West Sussex PO10 8RD

- Local reliable electrician.
- All electrical work undertaken from sockets to rewires.
- Free visual safety checks & estimates.
- Fully insured & Part 'P' registered.
- Member of Trading Standards 'Buy with Confidence' Scheme.

Contact Ed Ashley on 01243 373195 or 07733 467536

ejashley@tiscali.co.uk

www.checkatrade.com/ashleyelectricians



*You imagine it,
we'll make it real...*



Specialists in bespoke luxury bathrooms

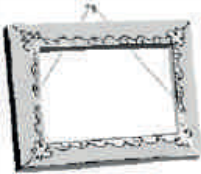
From design to completion
Attention to detail guaranteed
Come and visit our beautiful showroom
18 Elm Grove, Hayling Island,
Hampshire PO11 9EF

Tel: 02392 466007
www.aqua-ltd.co.uk

Showroom opening times: Mon - Fri 9am - 4.30pm Sat 9am - 12 noon

AQUA
BATHROOMS

Checkatrade.com
Where reputation matters



Petersfield Framing Studios

Picture Framing by Andy Parks, MA, G.C.F.

- ◆ Collection and Delivery Service in the Rowlands Castle area.
- ◆ Guild Commended Framer (G.C.F.) with 23 years experience.
- ◆ Over 400 different mouldings and 200 mount boards to choose from.
- ◆ Very competitive prices.
- ◆ Picture framing tuition also available.
- ◆ Tel: 01730 269926.
- ◆ Visit: www.petersfieldframing.co.uk

**"We Collect and Deliver Your
Picture Framing"**

Why not advertise here?

Local businesses are welcome to advertise in RCA Village Magazine.

It's low cost and your advert will be seen by every household in Rowlands Castle, Finchdean and the surrounding area.

For more information contact
Prue Amner
Advertisement Manager
RCA Village Magazine

Email: adverts@rowlandscastle.com
or phone Tel 023 9241 2459



Where play and learning fit together

Registration Charity Number 1088132
Rowlands Castle St Johns CEC Primary School
Whichers Gate Road, Rowlands Castle,
Hampshire PO9 6BB

OPENING TIMES: Monday to Fridays 8.30am ~ 4.30pm
Ofsted inspected

Early Years Foundation Stage curriculum

For a prospectus, or to arrange an informal chat, please drop in or contact:

LORRAINE BRYANT ~ Manager on 023 9241 2095

St. Johns CEC Primary School



ELIZABETH TURNER
PROFESSIONAL
CURTAIN MAKER

CURTAINS, BLINDS OF ALL TYPES, PELMETS
AND VALANCES, CUSHIONS ETC.
TRACKS, POLES AND
FITTING SERVICE
FABRICS, TRIMMINGS
FOR FREE ESTIMATE WITH EFFICIENT AND
FRIENDLY SERVICE

TELEPHONE / FAX 01243 389939

**PROFESSIONAL PLUMBING
& HEATING SPECIALISTS**

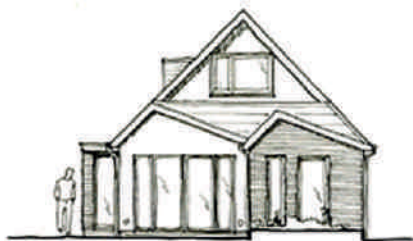
A. A. BARRETT

**51 Hatchmore Road
Denmead
Waterlooville
PO7 6TE**

**Tel: 023 92258057
Mobile: 07802321269**

engineering  **architecture ltd**

integrated building
design



experts in - planning applications
- building regulations approval -
structural surveys - for your home

t: **01730 352800**
e: mail@engarc.co.uk
w: www.engarc.co.uk

LAVANT HOUSE
CHICHESTER



Independent Education for Girls
Ages 3 - 18 Day and Boarding

- ◆ Excellent academic achievement
- ◆ Personalised learning in small classes with individual attention
- ◆ Championship standards in sport
- ◆ Superb art, drama and music departments
- ◆ Pre-school and after-school care
- ◆ Flexible boarding in a happy family atmosphere

01243 527211

office@lavanthouse.org.uk
www.lavanthouse.org.uk



S. Roberts Upholsterers

Professional Upholstery. Contract and Domestic.
Any size of work undertaken.

We provide a free
measuring and
quotation service

Call on **01243 377200**
for all your Upholstery
requirements

www.re-upholster.co.uk

Proud members of

Checkatrade.com
Where reputation matters



Unit 17, Clovelly Road, Southbourne, Hants PO10 8PD

Enjoy Life to its Fullest with Home Help

*Does someone you know need a bit of help
to cope at home? Do they need some
support after a stay in hospital?*

Home Help can provide help with

- Housework, cooking, shopping
- Getting dressed and getting ready for bed, bathing
- Reminders about medication, help with exercises
- Nursing assistance if required, including overnight

For more information, please contact us on

Petersfield/Waterlooville 01730 710666
Midhurst/Petworth 01730 817222
Bognor/Chichester 01243 866004
or email enquiries@homehelpuk.co.uk



INVESTOR IN PEOPLE

Copy-editing and proofreading services

Pursuing excellence in the written word

Books • Websites • Brochures • CVs
Press releases • Biographies • Theses
Sales and marketing material

*Anything that requires attention to detail
Over twenty years' experience
Testimonials available*

Christina Harkness

christina.harkness@virgin.net
02392 412416
07855 484751



MORRIS BUILDING SERVICES

Sham Morris
113 Finchdean Road, Rowlands Castle, Hants, PO9 6EN

RENOVATIONS
ALTERATIONS
SMALL WORKS

ALL ASPECTS OF PROPERTY MAINTENANCE AND
REPAIRS, INTERNAL AND EXTERNAL

ROWLANDS CASTLE FREE ESTIMATES
(023) 9241 3130 07941 742598



STANSTED PARK
Rowlands Castle, PO9 6DX.
Telephone: 023 9241 2265
www.stanstedpark.co.uk

Open Easter to September
Sundays and Bank Holidays 1-4pm
June July and August
from Sunday to Wednesday 1-4pm.

By appointment for Groups and Schools
on other days.

Help us by joining our team of volunteers.

Stansted Park is a wonderful venue for weddings
and special events. Contact us for details.

Arthritis Exercise classes and 1:1 sessions

*Improve your strength,
mobility, posture and balance
*Tailored to your needs *Advice
offered *All ages welcome

Free class taster session!
For further details call

Juliette O'Hea
MCSP MSc PGDip (Rheum)
Chartered Physiotherapist

Tel 02392 413885
mobile 07974 238787
Email physio@arthritisfirst.co.uk

Martin Steels Ltd

Optometrist

FOR PROFESSIONAL CARE AND ADVICE

OPENING HOURS MONDAY - FRIDAY 9AM - 5.30PM SATURDAY 9AM - 1PM

FULL EYE EXAMINATION

including Glaucoma Screening

Digital Retinal Imaging

Specialist advice on latest lens design

Contact lenses fitted

Budget and designer eyewear

NHS sight testing for eligible clients

Competitive prices on all frames

Stockists of sunglasses and most types of contact lenses

Bench 
RODENSTOCK

TED BAKER
LONDON

CK
Optical

ELLE

EMILIO PUCCI



Bench
Kids

FENDI

Silhouette

FLEXON
BY MARCOH

ACUVUE



Your local optician
WITH THE LATEST EQUIPMENT
INCLUDING DIGITAL RETINA CAMERA

16 High Street Emsworth

Tel: (01243) 375141

— R J — Winnicott L I M I T E D

BUILDING CONTRACTORS
Industrial, Commercial and
Major Domestic Works.

Telephone:
023 9241 2741



Fax:
023 9241 2212

Joinery Mill, The Green, Rowlands Castle, Hants. PO9 6BW

HOME HARDWARE

Great Price, Friendly Advice – Your Local Store

EMSWORTH

**Emsworth
Home Hardware**
11 High Street
01243 376852

ROWLANDS CASTLE

**Rowlands
Home Hardware**
11 The Green
02392 412332

ALTON

**Alton
Home Hardware**
13 High Street
01420 85115

ROMSEY

**Romsey
Home Hardware**
38-40 The Hundred
01794 512141

Family Run Business

BATHROOM • CAMPING • CLEANING • COOKWARE • DIY • ELECTRICAL
HARDWARE • HOUSEWARES • IRONMONGERY • GARDENING • GIFTS
GLASSWARE • OUTDOOR LEISURE • PLUMBING • TABLEWARE • TOOLS

Open 7 Days a Week

CHILDRENS LEARNING CENTRE

Member of, PLA and 4Children

125 New Brighton Road, Emsworth

EDUCATIONAL NURSERY AND DAY CARE SERVICES

OPEN 50 WEEKS A YEAR 8.00AM - 6.00PM

We offer full time and term time care for children from 0 – 5 years, hours and sessions to suit your requirements. Also we provide holiday activities for children 3 – 5, school age children – 12 years and an after school club

Telephone: 01243 372015 or email childrenslc@btconnect.com



Introducing your newly refurbished village Hair and Beauty Salon

Offering a fantastic variety of Hair and Beauty treatments by experienced, professional stylists and beauticians.

Including:

- Cutting
- Colouring
- Perming
- Barbering
- Special occasions

Style Studio offers an extensive portfolio of services available for everyone.

And ... why not treat yourself to a spot of pampering in our beauty room?

Our qualified beautician hosts a range of personalised treatments:

For professional advice and bookings:

Call: 023 9241 2606
3 Links Lane, Rowlands Castle



Extra Mech (Services) Ltd.

We are dedicated to provide a first class service with modern Plant.

**We Operate between Bournemouth to the West,
Dover to the East and Oxford to the North.**

Our General Hire Fleet, to which new Machines are delivered monthly consists of Excavators, Loaders, Planers, Vibrating Rollers, Compressors, Dumpers, Compactor Plates and Skip Loaders etc.

Used Equipment ex Rental Fleet, which is well maintained with low hours is offered for sale to our customers, and we provide a Service and Breakdown cover if required.

We can Transport our Customers own plant up to 13.5 tones with our Scania and Mercedes Beavertails and for small items we have a 3.5 tones GVW with Tail Lift.

We can supply Rebated Diesel Fuel. To approved customers

Telephone 02392 412888 Fax 02392 412370

Or our 24-hour service on 07860137102

**Or email us with you enquiry to
info@extramech.co.uk.**

**Or Visit Our Website on
www.extramechservices.co.uk**

We are expanding out of Recession.

We need your enquiries to prove to you that we can continue to remain efficient, reliable and competitive.



Chantry House Interiors
featuring *The Rug Emporium*



Furniture for Dining, Living, Bedroom
Solid Oak & Painted Pine Ranges
100's of Gorgeous Rugs in Store

Excellent Quality at Very Affordable Prices

28 North Street, Chichester, PO19 1LX
01243 776811
Shop@chantryhouseoak.co.uk

Richard C Arnold

Optometrists & Contact Lens Practitioners

Est 1890.

**See Well
Look Good
Feel Great**

Care • Quality • Choice • Service

- Eye Examinations, Eyeplan™, Private, NHS
- Children's NHS Eye Examinations are FREE
- Experienced, Friendly, Qualified Staff
- Extensive Frame Selection - Designer to Budget
- Bespoke Contact Lenses
- OCT Eye Health Scanner
- Optomap - Advanced Digital Retinal Imaging
- Orthokeratology - Vision Correction whilst you Sleep
- High Performance Sports Eyewear and Sunglasses
- Low Vision Advisory Service - NHS Accredited



**Richard C Arnold
Optometrists**



Please ask about eyeplan: **Eyeplan™** and **Eyeplan™ Complete**; Monthly payment schemes for Eyecare and Eyewear with many Additional Benefits

For further information please visit our website: www.rcarnold.co.uk

For an appointment call **Petersfield: 01730 263302**
or call in at 3-4 Exchange Buildings, High Street,
Petersfield, Hampshire, GU32 3JU

Weekdays: 9:00 - 5:30

Saturdays: 9:00 - 5:00

