

# Village & Valley

**AUTUMN 2018**

The magazine of the  
Rowlands Castle Association



# Village & Valley

The magazine of the Rowlands Castle Association

## CONTENTS

	5	Message from Chair
NEWS	6	Parish Council News
	8	East Hants District Council
	10	Neighbourhood Plan
	12	Hampshire County Council
	14	Village Business
EVENTS	16	Community and RCA events
	18	Village Picnic in Pictures
	22	Village Fair Report
COMMUNITY	24	St Hubert's
	27	Royal Voluntary Service
	28	Parish Hall
	29	St John's Church
	30	Painting Society
	31	Gardening Club
	32	Readers Contributions
	36	The Centre Spread
	38	Recycling
	39	Clean Air
	43	The Village in Pictures
	45	Church on the Green
	46	Health and Wellness
	48	St John's Primary School
	53	Fundraising
54	Stansted House	
SCIENCE & NATURE	56	Weather Report
SPORT	60	Cricket
FURTHER AFIELD	62	Great Days Out
	72	Numbers to Know



**Richard C Arnold**  
Optometrists & Contact Lens Practitioners

EST 1890



### Petersfield

**ARNOLD & SON**   
EST 1890

[www.rcarnold.co.uk](http://www.rcarnold.co.uk)  
3-4 Exchange Bldgs, High St,  
GU32 3JU

Tel: 01730 263302

### Midhurst

**arnolds opticians limited**  
[www.arnoldsopticians.co.uk](http://www.arnoldsopticians.co.uk)  
Ewen House, Red Lion St,  
GU29 9PB

Tel: 01730 814035

### Cowplain

**arnolds opticians limited**  
[www.arnoldsopticians.co.uk](http://www.arnoldsopticians.co.uk)  
69 London Road,  
PO8 8UJ

Tel: 02392 250641

Always the choice for quality sympathetic eye care from our team of qualified Optometrists & Dispensing Opticians. You can relax knowing your eyes are in good hands!



## / CONTRIBUTION GUIDELINES

The Village magazine is published three times a year by the RCA. The aims of the RCA are to act as a channel of communication for the village, to conserve its character and to enhance the life of its residents.

Contributions should be between 200-300 words and you should provide at least one image (max 10MB) to accompany your article. Please provide the image(s) as a separate file, not as part of a Word doc.

**PLEASE NOTE** the deadlines below:

**SPRING issue:** 18th March  
**SUMMER issue:** 18th June  
**AUTUMN issue:** 18th October

### PLEASE BE AWARE:

*Due to print deadlines late submissions cannot be considered for publication.*

## / ADVERTISE IN THE MAGAZINE

The village magazine is funded entirely by advertising. If you would like to promote your business or services and advertise on these pages please contact Prue Amner on the address below:  
[prue.amner@gmail.com](mailto:prue.amner@gmail.com)

## / THE GRAPEVINE

Grapevine is the village messaging service that sends out emails to those that have signed up about events and important information connected to the village. To sign up, send a blank email to:  
[grapevine@rowlandscastle.com](mailto:grapevine@rowlandscastle.com)

## / COVER PICTURE

Autumn sunset from the RC golf course

## / YOUR RCA COMMITTEE 2018/19

Helen Penfold (Chair)  
[chair@rowlandscastle.com](mailto:chair@rowlandscastle.com)  
02392 413233  
07557 276242

Martha Dombey (Treasurer)  
[treasurer@rowlandscastle.com](mailto:treasurer@rowlandscastle.com)  
9241 0030

Sue Leonard (Secretary)  
[secretary@rowlandscastle.com](mailto:secretary@rowlandscastle.com)  
9241 2108

Gordon Charlesworth  
9241 3865

Sue Morrison  
07795 566090

Joyce Jacobs  
9241 3738

Rodney Duggua  
075050 42723

Ben Brittain  
9241 3043

June Halford  
9241 2674

Gillian Lovegrove (Webmaster)  
[webmaster@rowlandscastle.com](mailto:webmaster@rowlandscastle.com)  
92412426

Kelvin Schäfli (Magazine editor)  
[editor@rowlandscastle.com](mailto:editor@rowlandscastle.com)

## RCA WEBSITE

[www.rowlandscastle.com](http://www.rowlandscastle.com)

ksprphoto.co.uk

## / RCA CHAIR REPORT

# MESSAGE FROM THE CHAIR

Helen Penfold

My thanks to the RCA committee for inviting me to be chair, and all our thanks to Fiona Charlesworth, who has done a brilliant job of being chair for the last three years. Thank you, Fiona, for all your hard work for the RCA and for the village community. We hope that you can now enjoy a well earned rest.

What a glorious summer it has been, with so many opportunities to enjoy being part of our lovely village and the surrounding area. This edition contains wonderful pictures of the village fair, a special time for everyone in the village.

All the money that is raised by the RCA, whether it is from the fireworks or from our annual quiz, or in other ways, is fed back into the village and local community one way or another, to help with funding for various projects and organisations and for providing events such as the children's Christmas party. This year, the proceeds from the RCA quiz have gone to help with much needed repair work at the village hall. We have also given money to the local surgery for the purchase of a blood pressure machine which can be used by patients in the waiting room. The surgery was grateful for this gift, which can be seen in the photo.

The children's Christmas party is on the morning of Sunday December 16th, when Magic Mikey will be entertaining the children, and we hope that Santa will have time to drop in. Do put the date in your diary if you have young children.

With best wishes,

Helen

[chairman@rowlandscastle.com](mailto:chairman@rowlandscastle.com)





## AUTUMN REPORT

Lisa Walker  
Clerk to the Parish Council

### General Council Matters

CPC now has a full complement of councillors, with the remaining vacancy filled by co-option in October. We look forward to welcoming formally Jon Moss, our new councillor, when he attends his first Council Meeting.

### EHDC's Consultation on Proposed Traffic Regulation Orders (TROs)

After some delay, EHDC mounted a Consultation on its proposals in July. RCPC published its response, which was broadly in favour of the proposals for Links Lane and Redhill Road, with some suggested variations, but strongly objected, in line with many residents, to those for Uplands Road. We await EHDC's finalised conclusions following this Consultation.

### New Developments

RCPC staff and councillors continue to attend regular meetings re Montague Green (aka 'Oaklands II') with Bellway and other local representatives. RCPC was pleased to hear Bellway has agreed to create the proposed link between the development and Bridleway 24, which runs from Whichers Gate Road to the old Keyline driveway. Belatedly, Taylor Wimpey are also being pressed to create the promised link from Oaklands Avenue to the Bridleway and the newly-permitted Application for 10 bungalows for 55+ year olds (aka 'Oaklands III') will include a pedestrian link to Oaklands Avenue. These links are vital to ensure new developments are connected as much as possible with the village centre and its facilities. They encourage new

occupants to access the centre without using their cars and provide access to the public transport system.

Issues surrounding the 2 developments off the old Keyline driveway, Nicholas King Homes and Bargate Homes, have centred around the steady rise in the number of construction workers' vehicles parked around The Green and up Redhill Road, reducing parking available to residents. This has increased after action by one developer adversely affected the other, which has very little parking on its site due to the constrained nature of the site. The Parish Office has received a multitude of complaints but RCPC has no powers of enforcement or action on this matter. EHDC also now states it has no powers of enforcement which is very frustrating for all. Despite alternative parking arrangements, workers seem reluctant to walk any further than absolutely necessary to get to their place of work. The Clerk has liaised with both site managers on this matter.

RCPC has also expressed its concern that the widened bellmouth to the old driveway presents safety issues for drivers, pedestrians and bridleway users due to the lack of visibility. RCPC believes the widening has also unduly encroached on Deerleap Verge, part of The Green, and is seeking professional advice on the matter.

### Developers' Contributions

After some delay, EHDC has begun the process of apportioning the contributions for Community Facilities to the 4 local organisations which responded to a call to submit formal applications for funding – St John's Church, the Church on The Green, St Hubert's Church and Rowlands Castle Scout Hut – and we understand each should receive some funding for their identified projects. EHDC is still in the progress of transferring the management

of future contributions to its Communities Team and formalising a new system for future apportionment of such funds.

To date, we have received no further news on how HCC plans to spend the £200K of Transport-related contributions from the Bellway development. As ever, RCPC continues to stress the importance of such contributions being spent in as 'joined up' a way as possible, with maximum possible consultation with local residents.

### Proposals under HCC's Community-funded Initiative

After a public Consultation, RCPC is pleased that its proposals under this Initiative have now been finalised and approved. Works to install village-style gateway signage and more railings on Manor Lodge Road, and gateway and other signage and lining on Finchdean Road, should begin before Spring 2019 and are designed to encourage traffic to slow down upon entering the village. RCPC will then consider the apportionment of any further funding under this Initiative, the remit for which is limited in scope.

RCPC remains anxious that satisfactory measures are put in place to help Whichers Gate Road/the mini-roundabout system/Manor Lodge Road cope with the significant increase in traffic anticipated from developments in north Emsworth and East of Horndean, as well as those within this Parish.

### Noticeboards, Trees & Whichers Gate Common

The new Community Noticeboard will be installed soon on the other side of The Green, between the bus shelter and post box. Work will then begin on designing and creating a new 'village lectern' to provide residents and visitors with information on the features around the Parish.

Developers' contributions specifically allocated for environmental improvements have now been received which has allowed RCPC to commission

works to trees around The Green, the Recreation Ground and the King's Meadow Estate, as recommended in last year's tree surveys. These works should take place in November once appropriate notification/permission has been given.

RCPC has also begun the process of leasing Whichers Gate Common from Portsmouth City Council as a way of safeguarding 'green spaces' within the Parish.

### Recreation Ground

The refurbishment of the Pavilion kitchen area is almost complete. The Management Committee will also be considering how best to spend those developers' contributions specifically allocated for the Recreation Ground.

RCPC has also worked jointly with Rowlands Castle Association, the event organiser, to ensure this year's Fireworks Display could go ahead, following crowd safety concerns in light of the increased attendance over the last few years. RCPC is grateful to the RCA for its collaboration on this and is pleased that the event was given the go-ahead by a Safety Advisory Group coordinated by EHDC.

Finally, please make time to read the minutes of the monthly Council meetings if you want to keep up to date with what's going on in the Parish – see the Council's website and/or local noticeboards.

Our website also contains lots of information on the work of the Council as well as local events and history. If there's a particular event you'd like promoted on the website and/or on the Parish Council's Facebook page, please let us know.



<https://www.facebook.com/RowlandsCastleParishCouncil/>

## NOTES FROM EHDC

Cllr Malcolm Johnson

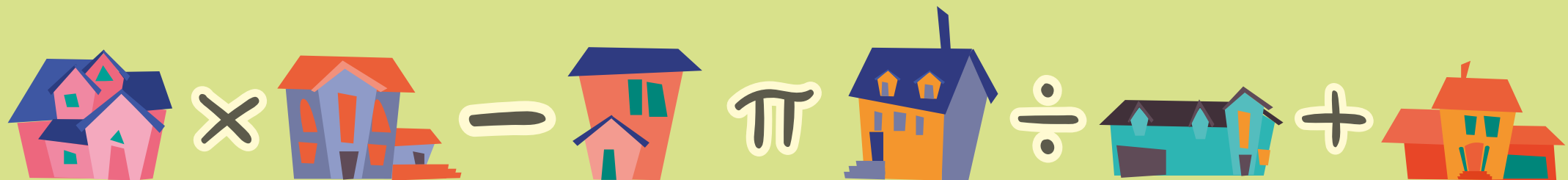
During the summer period there has been much activity with the continuing preparation of the new Local Plan that I referred to in the Summer edition of Village and Valley. A combined team of planning officers and elected district councillors has been working through a vast range of topics that will appear in the new version of the Local Plan. They are having to relate their ideas and decisions to the recently updated National Planning Policy Framework which is a strategic document produced by the

Rowlands Castle Parish Councillors together with our own Neighbourhood Plan team were given sight of the local sites that have been put forward currently and had a chance to provide local knowledge input to the planning team. This is vital information in forming the final version of the list of recommended sites throughout the district but more importantly for our own area within Rowlands Castle. Those of you who live in Finchdean will I'm sure, be aware of the new bench that now has pride

the same councillor who represents the rest of the parish of Rowlands Castle. That is as a result of the Boundary Commission review that was confirmed back in the summer. Idsworth will similarly then be represented by the same Rowlands Castle councillor. Which leads me nicely into reminding those of you who have as yet not returned your voter registration forms, or made use of the 'phone or on-line facility to register for future elections, both local and national, should do so now so as not to drop off

reminds me that I still have the lion's share of my annual grant still waiting to be used so as I say each year if you are part of an organisation wanting to complete a project and need some top-up funds to be able to go ahead, please go to the EHDC web site and download the form and once complete send it to me for signature and I will then pass your request to the Communities Team for processing.

And finally, please remember that on the



government. This latest version has introduced a number of changes including a rather complicated formula for calculating future housing numbers. Unlike the previous local plan, called the Joint Core Strategy, where each local area was given housing number targets, this time there will be a district-wide figure that will have to be satisfied on an annual basis. Also, the new plan will run for a much longer period but will still be subject to 5-year updates to take account of how the local land supply is being used up following development. Recently

of place in the centre of the hamlet. You may remember that the original bench, a memorial to local resident Winifred Butler, was destroyed last year by vandals passing through Finchdean in the summer. Top up funding for the new bench came courtesy of a district councillor colleague of mine, Nigel Wren, who used some of his annual councillor community grant to make the replacement possible. Mentioning that reminds me that next time you vote for us district councillors which will be in May next year, Finchdean will be represented by

the elector's register and therefore be denied a vote. East Hampshire is required to maintain the elector's register and in past years the follow-up visits to those who have failed to respond has cost something in the region of £15,000 which as I'm sure you will agree, can be better spent on support in the community. For example, that would pay for six weeks of grass cutting, find accommodation for 15 families threatened with homelessness or pay vet bills for around 200 stray dogs. Previously mentioning councillor community grant funds

first Thursday of each month along with our Hampshire County Councillor Marge Harvey and a representative from the Rowlands Castle Parish Council, I can be found in the village café between 1100 and 1200. So, if you have something you wish to raise we will be there.

I can also be contacted at EHDC via email: [malcolm.johnson@easthants.gov.uk](mailto:malcolm.johnson@easthants.gov.uk) or by phone 92412096.

# PROGRESS REPORT

David Holt (Steering Group Chairman)

New Residential Development planned in Rowlands Castle? – Have your say

The summer has seen steady progress, including completion of the “Housing Needs Survey” questionnaire which, hopefully, you have now received.

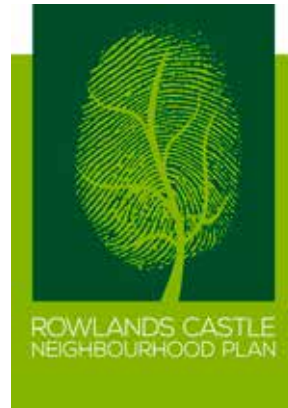
If you have not received a copy, please contact Gill Whatley at the Parish Office - by phone (02392 413044) or email ([projects@rowlandscastlepc.org.uk](mailto:projects@rowlandscastlepc.org.uk))

Or, alternatively, please complete the questionnaire on line at: [www.surveymonkey.co.uk/r/6JSMLYP](http://www.surveymonkey.co.uk/r/6JSMLYP)

There have been a number of questionnaires circulated to residents of the Parish over the last 10+ years. However, this one is specifically aimed at gathering your views about the type of new development that you would like to see in the Parish during the next planning period - from 2020 until 2036.

Housing (and other) development proposals will be set out in the next set of Local Plans (LPs) which are now being developed separately by both South Downs National Park Authority (SDNPA) and East Hampshire District Council (EHDC).

The Rowlands Castle Neighbourhood Plan (NP) will seek to influence these Local Plans, but it might also contain policies to restrict or



encourage aspects of any future development proposals. However, this will only be feasible if we have evidence of what you, the residents of Rowlands Castle, want.

Thinking and planning ahead for the next 12 months is challenging enough but this questionnaire, in parts, asks for you to think ahead about what you and your family might want in the next 5-15+ years! It is really important that you have a go at predicting what you might need or would like to see - over this period.

This questionnaire, including those posted online using Survey Monkey, is totally anonymous, so please do not provide any personal details.

Please place your completed questionnaire in the collection boxes at:

- The GP Surgery (12, The Green)
- The Londis Shop (5, The Green)
- St. John's Church Centre (120 Redhill Road)
- The George - Finchdean

YOUR VIEWS ARE REALLY IMPORTANT.

Please complete and submit the Questionnaire by 30th November 2018





# COUNCIL REPORT

Marge Harvey

Well, once again it is nearly time to say a very happy and healthy Christmas and New Year. It really doesn't feel as though it has been long since I was saying the same last year. As usual, it has been a very busy year in my division, which includes Horndean. It seems a very long time since I asked for the lining team to visit the village and repaint the lines! But at last it has just happened.

The problem was that our last contractor didn't finish the work and then took a large number of the staff with them when we changed to Skanska. This meant that not only did we need to catch up, but get new people to actually do the work. As usual, I kept asking when our work would be done and I am very pleased to say, that finally they have done most of the roads that were in dire need.

There is still some work to be done and that is being done by a different contractor. This is because we contracted the work out to EHDC, who needed to go out to consultation to find out if residents agreed with what we intended to do. We did get a few negative comments, but the positives outweighed them and the work is finally going to happen ASAP. I signed them off on Thursday last week, so hopefully, it won't be long before the work is finally done!!

As you may have noticed, the footpaths have been finally been sorted out (and not before time I hear you all say). It has been three years since I first asked for this to be done, but there

seemed to always be other areas that were worse than ours, so I am very pleased that we have finally come to the top of the pile of work needed to be done.

As you may know, I am co chair of the Autism Partnership Board for Hampshire and this keeps me very busy as I have to attend many meetings with different partners to try and get the best outcomes for disabled people. It really is a very hard job, but very rewarding when you finally manage to get these very vulnerable people sorted out.

There is a consultation out to close a facility in Hayling Island called Orchard View, to save £600,000 for Hampshire towards the budget deficit for next year. This facility to give families with very disabled people a very necessary break and for the recipients to enjoy some time away from their families and to meet others like themselves and gain some independence. I am totally against it because it does seem that when something works so well, we shouldn't take it away from the most vulnerable people. So, I would like to ask you all, to go online and look at the consultation and support it staying open. I know that at Hampshire we need to save money to keep services running, but I would like them to save it somewhere else!!!!

I am also on the Hampshire Adult Social Care committee, where we question hospitals and organisations who give care to our most vulnerable adults and try to make sure that the

CCGs know what we expect of them in regard to what services they supply the money for. I have just been appointed to the Portsmouth Hospital Trust Board, which I am very happy to be part of as it means that when they make decisions that I feel are not right, I can question them and try to help get it sorted out. I do think that it will be a mammoth job, but very necessary.

As part of my co chair position I get to meet many decision making people, so I only hope that it will help me with the Portsmouth Hospital position.

As part of the social care committee, I am on a sub committee to try and get as much help for homeless people as possible and bring all the agencies together to help make it work for Hampshire. This is ongoing at the moment, but has taken about nine months so far, but we seem to be making good ground.

As you know, the government has decided to put everyone claiming benefits on to a new one stop benefit called Universal Credit. Whilst I realise that it has many benefits it also has many problems. I have had some training on this and had many questions that still haven't been answered, but it doesn't seem to be helpful for disabled people, so I am still asking questions.

I am now an Autism Ambassador, after taking the training. There are now over 500 in Hampshire. I am now able to give the training to the Doctors and Pharmacy in the village, which they have

agreed to. I am also contacting all of the schools in my division to give training to the teachers and staff, which I am sure will help them enormously, when they are faced with children who are on the autism spectrum. This, of course is part of the work for the committee for Autism which I am co chair of.

I also have made contact with the new owner of the Bumblebee Cafe in the village and she has kindly allowed us to continue our monthly surgeries, which as you know is on the first Thursday of every month. Of course, there are some times when I cannot attend, because of meetings elsewhere, but you can always contact me at home on my phone or by e mail. My phone number is 92 413858 and my e mail address is [marge.harvey@hants.gov.uk](mailto:marge.harvey@hants.gov.uk) and I will get back to you as soon as I get your message.

I am sorry that it seems a bit lengthy as a report and that isn't all that I do as I am on many committees which can take up many hours, but that it something that I chose to do and I find it very rewarding.

I do hope that you have a really good time this Christmas and New Year and that we all consider those who aren't as lucky as we are and help those people as much as we can.

I look forward to seeing you around the village.

## / VILLAGE BUSINESS

# BUMBLEBEE CAFÉ

Kate and Mark Smith

Many of you will have seen that the café has undergone a change in look, name and feel. We thought it would be a good idea, as the new owners, to introduce ourselves to you all, as new members of the community.

We are Kate & Mark, and we are using this wonderful opportunity to re-establish ourselves in the village. Kate was born and raised in Rowlands Castle, while Mark is a London boy. Although we live in and commute from Shepperton, our hearts are very much in the village. Both Kates parents still live here, and our hope is to move back soon, once both of our children finish at university.

Kate works in the café 6 days a week, and Mark joins the team on Sundays, as he has a full-time job. We still have Hayley working for us, and she has been joined by Alison. At the weekends, you will also see Kieran, Daisy and Helena. When they are home, our children, Charlotte and Alex also come down to help out.

Our vision for the café, is for it to become part of the centre of village and community life. We both feel very strongly that we are providing a service for our locals and we dearly hope that you will all soon come to accept us for the service that we can offer. As a community café, we welcome you all, wet, muddy (within reason!), with or without dogs, by foot, car or bike. Part of our ethos is supporting local trade and business. Our coffee is sourced from a fantastic importer and roaster in Arlesford, our meats from a local butcher, our bread from the village, and so on. Where we can, we are trying to reduce the 'food miles'. In addition to this, we are trying to build in a greener approach, and all of our disposables, cups, lids, plates, napkins and bags are fully compostable.

You may well see our lights on well after our closing time. This is because Kate is often there baking all of our cakes and tray bakes from scratch – no packets or bought in cakes for us! Trying to keep up with demand is a bit like painting the Forth Bridge. Likewise with all of our meals, everything is cooked fresh to order. This may add a little waiting time, but it is worth the wait – you can always have another coffee....

We are open Tuesday to Sunday (I need one day off), from 9am to 4pm. We hope to see you soon.



## / VILLAGE BUSINESS

# BE STRONGER, MORE FLEXIBLE & PAIN FREE

Natalie March

Physio-logical is an award winning private physiotherapy, back pain and sports injury clinic providing high quality, hands on and patient focussed physiotherapy in Rowlands Castle.

Since 2008, Physio-logical has provided physiotherapy to over 4,000 Hampshire and Sussex residents. We have an experienced team that will work with you to restore, maintain and enhance your wellbeing and physical activity.

We offer quick access to a healthy, active and pain free lifestyle with flexible appointment times to suit you. We listen to your needs and



work together with you to achieve your goals. We are now offering a neurological physiotherapy service too, so if you have MS, Parkinson's Disease, or have had a Stroke then we can help you.

In each edition of this magazine we plan to share with you some self help exercises and tips. If you would like any self help exercises about a certain condition then please drop us an email at [enquiries@physio-logical.net](mailto:enquiries@physio-logical.net).

**See pages 46 - 47 for tips and exercises.**

### Blogs/Newsletters:

We are now writing regular blogs on our website <https://physio-logical.net/blog/> If you would like us to write a blog, newsletter or article about a specific condition/complaint then please do let us know.

### Social Media

We are always updating our social media sites with news, offers and competitions please like us on Facebook - <https://www.facebook.com/physio.logical.net>, follow us on twitter - [https://twitter.com/Physio\\_logical](https://twitter.com/Physio_logical), follow us on instagram - [https://www.instagram.com/physio\\_logical/](https://www.instagram.com/physio_logical/) and connect with us on linked in <https://www.linkedin.com/company/physio-logical>

### Gift Vouchers

Sports massage and physiotherapy vouchers make ideal gifts, for more information please email: [enquiries@physio-logical.net](mailto:enquiries@physio-logical.net).

For more tips and guidance or to book an appointment online please visit [www.physio-logical.net](http://www.physio-logical.net)



## RCWI

7:30 pm  
Second Monday of each month  
No meeting in August  
Parish Hall, Links Lane

## FOLK CONCERT

Nov 23, St John's church hall

An evening folk concert in aid of the Rowlands Castle Heritage Centre  
Featuring Driftwood (David Mitchell & Gordon Charlesworth) playing and singing their own songs and Froddy (Tod Sloan & Fred Smith) playing more familiar stuff, mostly 60's & 70's.

## WOMANS FELLOWSHIP

2:00 - 4:00 pm  
First and third Tues afternoon of the month. No meeting in August  
St John's Church centre. See page 49

## LIFE DRAWING

Stansted House  
Winter season begins November 4th.  
10-12 in the Blue Drawing Room at the cost of £20 per person for two hours of tuition from an experienced local teacher, Jules Roper.  
See also page 54

## RVS LUNCH CLUB

12:00 pm - 1:30 pm  
Every Thursday  
Parish Hall  
Contact: Carol Milford 02392 412321

## NSPCC CHRISTMAS FAIR

Saturday 24 November  
11am - 2pm  
The Parish Hall, Links Lane

Refreshments/light lunches  
Lots of Gift and Craft Stalls, Cakes, Carols and Entertainment from St John's School, Grand Raffle, Art Sale, Santa's Grotto and much more.

Bring the whole family along, start your Christmas shopping and support the vital work of the NSPCC.

For further information or to enquire about stall hire, please contact:  
sueandjona@aol.com

## TENNIS CLUB QUIZ

Saturday 24th November 7-30pm  
Tickets £12-50

Tables of 8. We can help you make tables.  
Please come and join us for our annual quiz night. Ticket price includes Fish and Chip supper - vegetarian option available. We will have Real Ale available for a £2 donation.  
Bring your own Wine and Nibbles.

If you are interested please contact Dawn at dawnwears@hotmail.com or Michele at jizzyharpur@btinternet.com

## MAYDAY PICNIC & BBQ ON THE GREEN

MONDAY 6TH MAY 2019  
12:00 - 2:00 pm

Fun for all, including music by the Blendworth Brass Band. BBQ on the forecourt of the Fountain Inn.  
Collection in aid of the Rowan's Hospice.  
Contact: secretary@rowlandscastle.com

## RCA QUIZ NIGHT

OCTOBER 2019 (date yet to be confirmed)

Always popular, come for the fun, food and prizes  
Contact: secretary@rowlandscastle.com

## CHILDREN'S CHRISTMAS PARTY

SUNDAY 16TH DECEMBER 2018  
11:00-1:00 pm

The annual RCA Children's Christmas Party in the Rowlands Castle Parish Hall. For children 0-6 yrs (with an adult). Magic Mikey entertainment, lots to eat and Father Christmas. £1 per child and a wrapped and labelled present for Father Christmas to give.  
Contact: Anita King 07952 882201. Email: anita.king43@googlemail.com for more information and tickets.

## FIND OUT WHAT'S HAPPENING IN THE VILLAGE, SIGN UP TO THE GRAPEVINE

Grapevine is the village messaging service that sends out emails to those that have signed up about events and important information connected to the village.  
To sign up, send a blank email to:  
[grapevine@rowlandscastle.com](mailto:grapevine@rowlandscastle.com)







# THE VILLAGE FAIR

7 JULY 2018



PHOTO: Samantha Bradshaw







# THE VILLAGE FAIR

7 JULY 2018

PHOTO: Samantha Bradshaw





## ROWLANDS CASTLE VILLAGE FAIR REPORT

Grahame Morrison  
Committee Chair

Despite the usual sterling efforts of the Village Fair Committee members, this year's fair would not have been possible without the support of the additional 30+ people in the village who, yet again and in the true village spirit, gave up their own time to help make the day happen.

Their efforts this year were truly "above and beyond" given the extreme weather on the day - 32°C (90°F) being measured on the Green (sorry Brown!). With Jon Arnold volunteering to step into the late Clive Hancock's (hard to fill) shoes and provide the catering, for the volunteers he persuaded to cook on the barbecues it was truly an inferno.

Nevertheless, I think you will all agree that the event was a great success - the Green was full of rides and stall's and we had the usual high attendance numbers.

The key objectives for the Fair are:-

- 1) Ensure that it, as the biggest event in the village calendar, is a great day (and evening) out for young and old.
- 2) Recoup the nearly £20,000 pounds it costs to arrange so that we can do it all over again - including the annual Christmas tree on the Green.
- 3) Make a profit that can go towards good causes in the village, e.g. the public defibrillators and exercise and play equipment on the Rec.

This year we had two significant challenges to success. The heat meant that we had to cancel the dog show, the kids games in the arena and close some of the rides that were literally too hot to touch. Secondly the World Cup match seriously affected our bar receipts as the beer drinkers went off to the pubs to watch the game at 3PM - and never came back!

Despite these challenges I am happy to report that we achieved objectives 1) & 2) together with a tiny 3).

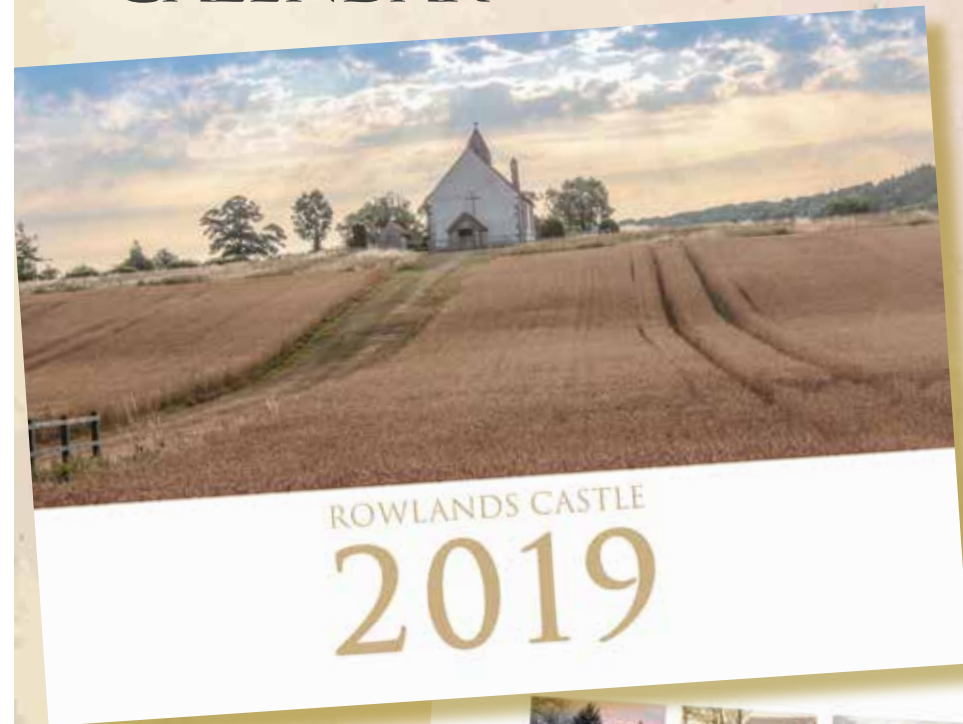
So, once again, many grateful thanks to all involved from the Fair Committee.



See also pages 18 - 21

# NOW ON SALE

## 2019 ROWLANDS CASTLE CALENDAR



Get yours at  
**Home Hardware**  
or **Bumblebee Café**



ROWLANDS CASTLE  
2019

Photographs supplied by Rowlands Castle Photography Group  
Contact Pat Carter (pat.carter193@btinternet.co.uk)



# ST HUBERT'S SECOND ART EXHIBITION

14TH - 16TH SEPTEMBER, 2018

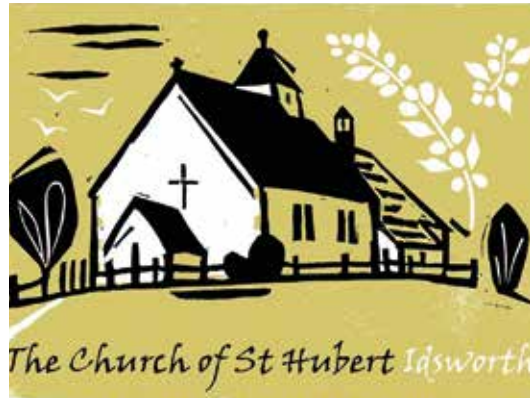
Andrew Callender, Chairman,  
The Idsworth Church Friends Trust

1000 visitors over the three-day exhibition contribute to record breaking fund-raising event.

This year's second Art Exhibition which was masterminded once again by local professional artist, Deborah Richards, was blessed with splendid September weather and encouraged some 1000 visitors to climb the hill to 'the little church in the field'. Many were visiting the church for the first time.

The event opened with a Private Viewing on the Thursday evening at which Trevor Beattie, CEO of the South Downs National Park Authority was guest speaker. He was also able to announce that the SDNPA had awarded The Idsworth Church Friends Trust a grant of £5,000 which will go towards a Shared Identity Project. This will enable the Trust to improve the roadside frontage and disabled access to the church, as well as to provide more information about St Hubert's in the form of an information panel, with nutshell history of the church, together with leaflets.

In all, thirty professional and established local artists (many award-winning) created another very engaging show at St Hubert's this year. 2D and 3D works filled all available spaces. New artists were invited to join some of the returning exhibitors, creating different and exciting additions to this rich mix of art genres.



Land Artists Mark and Rebecca Ford of Two Circles Design kindly created two large special installations in willow - one outside the church and another in the pulpit. Ken Briffett and Ken Yalden exhibited and demonstrated their collaborations in wood and rope. Other newcomers included Sarah Macrae's jewellery inspired by archaeology and nature and Maureen Brigden's striking stoneware sculptures and smoke-fired keys representing the parishioners and lost village that once surrounded this isolated church.

Jon Barrett-Danes' amazing menagerie of life-sized ceramic sheep, chickens and geese resided in the area around the altar. In the pews, visitors enjoyed wildlife photography, oil paintings, Ruth Barrett-Danes' beautiful prints based on the murals and fabric of the building, expressive oils, atmospheric landscape photography, silkscreen, lino and monotype



prints, watercolours, enamel leaves and wooden bowls made from local wood. On the window ledges could be found studio pottery, figurative ceramic sculptures of crows and wolves, stained glass totems. Outside were Trudy Redfern's life-size driftwood horse heads. The actor, Charles Collingwood, who plays Brian Aldridge in 'The Archers', made a guest appearance on the Saturday afternoon.

The Friends' stall and the refreshment tent were both popular: proceeds amounted to over £1200 which, when added to the commission taken on the sales of art work, meant that the handsome figure of over £3,000 was raised, more than doubling last year's total.

All in all, this was a great team effort and I am very grateful to so many members of the parish and local community for the giving of their time and talents to make the event such a success.





## THANK YOU FOR THE MUSIC

John Bates

Derek Hickman has retired after a remarkable 55 years as the organist at St Hubert's Church.

When repairs to our organ were carried out in 2013, a plate was uncovered showing that the organ was built in 1913, 100 years before and we then realised that for half of its life one man had been at its keyboard: Derek Hickman.

The occasion had to be marked and a day of Music and Song was arranged to celebrate both the Man and his Instrument.

It is a rough calculation but I think that that works out at some 12,375 Hymns played over the last 55 years not to mention the many wedding services, funerals and Christenings he has played for.

His playing has inspired our congregation to raise our voices in praise on bright sunny days when the church door has been left open to allow the music to carry over the Idsworth countryside, and on freezing winter Sundays when, despite the heaters, the congregation shivered in our pews. Even the flooding of the Lavant (a regular winter event) would not stop Derek from coming up the hill to play for us, and woe betide the congregation who didn't sing up.



It was not unknown for Derek to stop playing turn around and admonish us for our tardiness.

As the arranger of our Christmas services and special events he was second to none and he always found time to spend with prospective brides to make their wedding day special.

We shall miss him.

This now leaves us with a major problem. How do you replace a man like Derek? Well we know we can't, but we are actively seeking a new organist for St. Hubert's. Just one service on Sundays and half a dozen weddings a year so how about it? Anyone out there know of someone brave enough to step into Derek's shoes?

## TOGETHER FOR OLDER PEOPLE

Carol Milford  
RVS Volunteer Coordinator and Treasurer  
Sue Leonard  
Assistant RVS Volunteer Coordinator

Rowlands Castle RVS Lunch Club celebrated its 36th Anniversary in June with celebratory meal; this hails its success of the Lunch Club in the village. This is quite an achievement and thanks go to everyone for all their support.

We currently have 17 Volunteers and 7 Volunteer Drivers with a membership of 31, which takes

us to our capacity and we have now started a waiting list.

During our year we served over 1200 meals, which included special celebratory meals for Christmas, our Anniversary, Easter and the Royal Wedding. As we prepare for the festive season our members have been invited to Hordean Technical College a special Christmas Lunch with entertainment, which is all, served by the staff and students. We are preparing for our own celebration as well.

The needs of our members does grow and we can never have too many volunteers particularly drivers as more and more of the members need transport, so if anyone would like to come and join our team we would certainly welcome you.

It only remains to say a heartfelt thank you to everyone for all their support.

## ROWLANDS CASTLE RVS LUNCH CLUB Together for Older People

**Rowlands Castle RVS Lunch Club continues to meet every Thursday in the Parish Hall.**

**It's a great way to socialize and meet old and new friends, catching up on each other's news and discussing many events (Very often how the world is changing!) We really do have a sociable time, sharing a meal together and our wonderful volunteers try to make it a special time for everyone.**

**Currently we are at maximum with 32 service users however if anyone would like to join us on Thursdays from 12:00pm to approx. 1:30pm (no rush to get away) we will try and find space for them as changes do occur regularly.**

**Wherever possible we offer to pick up and take home our service users who are no longer able to drive themselves. If you have some time to spare, maybe once a month or more, please contact us and we will guide you through joining the Royal Voluntary Service.**

**For more information please contact  
Carol Milford 02392 412321 or Sue Leonard 02392 412108**

*Carol Milford RVS Volunteer Coordinator and Treasurer  
Sue Leonard Assistant RVS Volunteer Coordinator*





## / PARISH HALL

# LOTTERY SUBSCRIBERS NEEDED

Jonathan Law  
On behalf of RCPHMC

The Parish Hall Lottery scheme was started in 2004 for the purpose of raising funds to help towards the upkeep of the Hall.

The scheme is based on the Bonus Ball drawn each week on the Saturday Lotto and if this matches the scheme members' personal number they win £25.

It has been very successful in helping the Hall financially but in recent years the number of subscribers has gradually reduced. The increase in the amount of National Lottery balls to 59 now means there are several spare numbers available to new or existing subscribers.

The weekly cost is £1 payable by quarterly or annual standing order.

The Parish Hall is dependent on support from the wider Rowlands Castle community. We would welcome additional supporters to help look after and maintain a much loved part of our Village for just £1 per week.



For a standing order form or further information:

**Please contact the Parish Office Tel 02392**

**413489 e-mail [rcphmc@btconnect.com](mailto:rcphmc@btconnect.com)**

**Barbara Openshaw Tel 02392 412400  
[barbaraopenshaw36@gmail.com](mailto:barbaraopenshaw36@gmail.com)**

**Or Mike Stafford Tel 02392 471535**

Thank you

Rowlands Castle Parish Hall Management Committee.

## / ST JOHN'S PARISH CHURCH

# NOT STANDING STILL

Pam Ewing & Terry Monohan  
Church Wardens

The summer months have been very busy for St Johns Church. In particular, two new initiatives have started -

Our regular Monday morning mother/carer and toddler group, Blue Moon Café, has been transformed into Little Fishes Playtime, with a more structured format. It starts at 9.30 with play, followed at 10 with a story then snacktime, more play, then at 10.50 Song time and 11 Craft time, ending at 11.15.

Christianity Explored started in September and runs until November 11th. This is a course in which participants watch videos, read St Mark's Gospel and discuss in small groups in order to discover who Jesus was, why he lived and what difference he has made and can make to our lives. About 30 people have been attending each week so far. I hope we will run the course again next year.

The Church was decorated beautifully for our Harvest Festival service on October 7th, after which a generous donation of non-perishable goods was made to the Beacon Food Bank. Our inspired Flower Arrangers will again be working hard at the end of October, for our World War 1 Commemoration which will take place between October 21st and November 11th.



Special Services happening during the next months are:

**November 11th, 10am** : Remembrance Sunday service including Act of Remembrance at the War Memorial at 11am, followed by refreshments in the Church Centre.

**December 2nd, 10am** : Advent Sunday Messy Christingle

**December 9th, 3.30pm** : In Loving Memory, a service in which we remember loved ones, followed by tea.

**December 23rd, 6pm** : Service of Lessons and Carols for Christmas

**Monday December 24th, 6pm** : Instant Nativity – informal family event to hear the Christmas story.

**Monday December 24th, 11.30pm** : Midnight Holy Communion

**Tuesday December 25th, 10am** : Christmas Day Family Communion

You are welcome to all our events.

## / PAINTING SOCIETY

# OUR NEW PROGRAMME FOR 2018/19

Jan Roblin

Members of Rowlands Castle Painting Society enjoyed their painting and picnic out days during the lovely weather this summer. There was much for the painter to appreciate in the area, such as the pretty village of East Meon and Bishops Gardens in Chichester, just two of the many locations visited.

### Our new programme for 2018/9 is:

#### Life and Portrait drawing afternoons

6th and 20th November  
15th and 29th January 2019  
5th and 19th February 2019  
5th and 19th March 2019

#### Workshops held by members

13th and 27th November  
8th and 22nd January 2019  
12th and 26th February 2019  
12th March 2019

The Society is looking forward to welcoming evening demonstrators, who are all accomplished artists. They will be working in a number of different mediums including watercolours, pastels, acrylics, oils and even one artist painting Still Life in the Style of the Old Masters.



The dates these talented artists visit The Society are:

Sonia Baccus - 13th November  
Lucy Cookson - 27th November  
Sue Colyer - 8th January 2019  
Roger Dellar - 22nd January 2019  
Stewart Becket - 12th February 2019  
Caroline Strong - 26th February 2019  
Nic Cowper - 12th March 2019.

For further information on any of the above please contact John Davis on 01243 371662 or email [paintjr57@gmail.com](mailto:paintjr57@gmail.com). Meetings are held in the Parish Hall on Tuesdays, 2pm - 4pm with demonstrations taking place between 7.30pm - 9.30pm. Membership for the year is £30 and covers all the above sessions plus additional events. Non-members are welcome at a cost of £3 for workshops and £5 for life/drawing afternoons and evening demonstrations. Please come along slightly earlier than the start times.

## / GARDENING CLUB

# SOMETHING TO LOOK FORWARD TO

Gordon Charlesworth

An odd picture for this time of year? Yes, but a reminder that to enjoy beauties like this in your garden next spring you have to act now.

Also the Gardening Club Spring Show will take place on 13 April 2019, so time to get planning and planting to be part of this increasingly popular event!

The Gardening Club holds meetings throughout the winter.

On 21st November Ray Broughton (immensely knowledgeable and always good for the latest tips) talks about "Plants For Year-round Interest".

Our wild and raucous Christmas party in December is members only, but next year we shall have speakers on easy veg. growing, flowers for bees, hanging baskets, organic gardening, and talks from various growers, nurseries, gardens and more.

Non-members are always welcome at any meeting but membership will save a little money and gives you access to our garden visits in the summer (as well as the party, of course!). Membership lists renew in January.

For more information please contact Gordon Charlesworth 07896 291754, [gcharlesworth777@gmail.com](mailto:gcharlesworth777@gmail.com) or see the village website.





## SIGNS

Tony Wright

It seemed like Autumn came early this year when the Horse Chestnuts singed by the summer heat highlighted their green baubles, but it was the almost unrelenting blue sucking the hedgerows to dust and the Green to brown as this Summer became the stuff of folklore when we'll someday say "Do you remember '18?" It certainly has been a scorcher; alas for the conkers I hear as their trees are barely decked for the festive season.

My mother would always make mention of the first signs of the change; when the psychedelic luminosity of sweet chestnut leaves dazzling on azure are replaced by subtle splashes of lime and gold as the summer vibrancy is drawn into swollen stems and burnishing fruits. So I was staggered by the echo of lemon from a second flowering behind Woodberry, each sprout a dwarf of their earlier cousin that had previously caught my eye. Then the Avenue erupted with glorious glancing light setting the treetops afire as the air took on a fresh crispness and a lilac haze settled over the House. The equinox has now passed and mornings are sharp to the nose. The excitement of the dogs tracking mysterious scents tell of descending dew; and Jane's blueberry bush has finally given its last breakfast where the morning chills have suddenly thrown crimson in forecast of the splendours of Autumn.



## WOMENS FELLOWSHIP IN ROWLANDS CASTLE

A group of very enthusiastic local ladies meet twice every month with the exception of August. We meet on the 1st and 3rd Tuesday afternoons between 2 and 4pm. at St John's Church Centre at the top of Redhill Road.

We always begin our meetings with a rousing hymn and continues with a programme of activities suggested by members - including games, quizzes, craft, debates, beetle-drives, What's My Line, also seasonal meals and some outings. We round off the afternoon with a cuppa and posh biscuits. We hold our AGM every November. Members will make you most welcome if you would like to join us.

Please contact Gill at St John's Church Centre Parish Office on 92410111



### Petersfield Framing Studios

#### Picture Framing by Andy Parks, MA, G.C.F.

- ◆ Collection and Delivery Service in the Rowlands Castle area.
- ◆ Guild Commended Framers (G.C.F.) with 23 years experience.
- ◆ Over 400 different mouldings and 200 mount boards to choose from.
- ◆ Very competitive prices.
- ◆ Picture framing tuition also available.
- ◆ Tel: 01730 269926.
- ◆ Visit: [www.petersfieldframing.co.uk](http://www.petersfieldframing.co.uk)

**"We Collect and Deliver Your  
Picture Framing"**

### THE DOG RUNNER SOUTH DOWNS



3, 5 and 7 mile runs for high energy dogs in Rowlands Castle, Emsworth and surrounding villages.

Call Helen Ison on 07791 125408  
[www.facebook.com/  
thedogrunnersouthdowns](http://www.facebook.com/thedogrunnersouthdowns)  
Email [helen.dargan@btinternet.com](mailto:helen.dargan@btinternet.com)





# Protect your family's health

Our friendly and approachable GPs offer:

- ✓ Chicken Pox vaccination
- ✓ Comprehensive health checks
- ✓ Flu vaccination ✓ Corporate services



Call **01243 766 447** to arrange your appointment in Emsworth and Chichester.

[www.southdownsprivatehealthcare.co.uk](http://www.southdownsprivatehealthcare.co.uk)



SOUTHDOWNSPRIVATE HEALTH CARE

Making time for your health

## Independent private GP service



### Southdowns Healthplan

Offering you outstanding healthcare exactly when you need it.

18-40 years Plan	40-60 years Plan	60+ years Plan	Couples Plan	Family Plan
£35 <sub>pcm</sub>	£45 <sub>pcm</sub>	£57 <sub>pcm</sub>	£75 <sub>pcm</sub>	£99 <sub>pcm</sub>

- Free annual healthcheck
- Free Flu Jab
- Up to 10 GP appointments
- Free administration of prescriptions
- Free administration of referrals
- Discounted prices on advanced health checks
- Priority appointment booking
- Online access to your letters and results

Visit [southdownsprivatehealthcare.co.uk](http://southdownsprivatehealthcare.co.uk) for more details and to join Healthplan today

97 Havant Road, Emsworth, Hampshire, PO10 7LF

The Boxgrove Clinic, The Street, Boxgrove, Chichester, PO18 0ES

Tel: 033 022 02000 | 01243 766447



SOUTHDOWNSPRIVATE HEALTH CARE

## NO PLASTIC IN LANDFILL

Fiona Charlesworth  
fcharlesworth777@gmail.com  
07767 867603

There is no need to put any non recyclable plastic and other materials into your domestic bin. Unrecyclable waste can provide a valuable source of energy (heat and electricity) through Energy from Waste (EfW).

If you collect your non recyclable plastic, you can take it to the local recycling centre in Havant where there is a collection bin for material that will be incinerated to create electricity

More EfW can help with the UK's twin problems of diminishing landfill and expensive energy imports. With stringent EfW emission limits the potential for impact on health is extremely small. UK EfW plants contributed to 0.8% of the total regulated dioxin emission compared with

domestic heating 19.4%; iron & steel industry 13.1%. Estimates suggest that the 15 minute London Millennium firework display equalled 120 years of dioxin emissions from one of London's two EfW plants.

For more information, look at the British Plastics Federation web site: [www.bpf.co.uk](http://www.bpf.co.uk)

You can probably reduce the amount of waste in your domestic bin by half by collecting your non recyclable plastic and taking it to be incinerated at the recycling centre.

If you're interested in reducing plastic use and plastic waste (especially in Rowlands Castle) do get in touch. You never know what we could achieve!



## LIGHTING FIRES CAN AFFECT AIR QUALITY

Joanna Thurgur

Many of us enjoy the comfort and appeal of a wood burning stove or open fire, and the use of stoves in particular has become very popular. People have discovered that it's an effective and enjoyable way to heat a room, or even a whole house, and it's much nicer to look at than the radiator.

But there is a health problem in the UK which affects us all. Most people are aware that air pollution comes from vehicle engines, construction, agriculture and roads (dust from passing traffic). But less well known is the pollution that comes from all heating appliances, including wood burning stoves and open fires. It is a national problem and affects rural communities as well as towns and cities.

The root of the problem is that the wood is often not burned at a high enough temperature. If it's not hot enough, unburned fuel vapours travel up and out of the chimney, contributing to poor air quality.

There is a real lack of awareness of these issues, particularly when burning wood in stoves. Most people who use a stove aren't even aware there is a problem, let alone think that they might be a part of it. Despite the problem, a great deal can be done and the good news is that getting it right is easy and will save you money, reduce the risk of chimney fire and help to reduce air pollution.

The design of the stove and the moisture content of the wood are two factors that affect the burning

temperature, but the most important factor is the way the user controls the air supply to the stove. If the air supply is closed off too much, the wood does not burn hot enough, creating problems.

It's not a complicated problem but because there are a number of factors involved, people are often unaware of what is happening when they burn wood in the stove. A few simple changes can make a big difference.

We urge people to find out more about a national campaign called 'We all breathe the same air.' It helps people who use stoves to get it right and make a difference to the air quality where they live. Getting it right saves money (less unburned fuel escapes up the chimney) and the chimney will be cleaner and safer.

The campaign is being spearheaded by professional chimney sweeps across the country. If you'd like to know how get the best from your stove, save money, keep the chimney cleaner and improve your local air quality then you can get in touch with us by visiting [www.joannathesweep.co.uk](http://www.joannathesweep.co.uk)

There is also an excellent online guide, complete with video demonstrations, which explains everything. Find out how to 'Get it Right' at: [www.findachimneysweep.co.uk/we-all-breathe-the-same-air/](http://www.findachimneysweep.co.uk/we-all-breathe-the-same-air/)

Joanna Thurgur Chimney Sweep Services  
[info@joannathesweep.co.uk](mailto:info@joannathesweep.co.uk)  
07731 525673



**/ THE CENTRE SPREAD**

Autumn view of Stansted Park Avenue





## EMSWORTH OYSTERS

Chris White



Did you know that Emsworth was a major supplier of oysters across the country. In 1778 7,000 bushels of oysters valued at £1,500 were raked and dredged by a dozen fisherman. At it's height, in the last decade of the 19th century, 300 to 400 people were employed in the Emsworth oyster trade. In 1878 there were about 50 vessels in Emsworth, rowing boats for fishing in the harbour and boats of up to 30 tons and 50 feet in length capable of fishing in more distant waters. Over 3,000,000 oysters a year came from Emsworth. Over half the population were involved in some way with the fishing industry (i.e. boat building, sail fishing net and rope manufacture).

The industry was devastated by the great oyster scare of 1902, when guests at a banquet in Winchester became ill, and the Dean of Winchester died of typhoid. Emsworth oysters were blamed. After an inspection of the oyster beds sewage contamination was blamed, and the sale of Emsworth oysters immediately slumped. Since then the waters have been cleaned-up, but today only a handful of fishermen are still dredging the harbour for oysters.

At one time Emsworth even boasted an oyster shop now long gone, the site is now the Indian restaurant 'A taste of India'.

## FOUNTAIN INN

Mary-Jane Lomer

During this summers heatwave did you notice a bleached path appeared crossing the Green to the Fountain Inn? This was called Fountain Lane and led straight to the ancient pub whose history has always been full of mystery.

It was said that a tunnel led to Langstone Harbour, no one dared venture down the tunnel but some ducks were sent down and appeared at Langstone! Smugglers were reported to use the tunnel repeatedly.

Also the ghost of a dark curly haired girl of around twelve has been seen in her nightie. Long before drink drive laws one local farmer drank at the Inn with his horse Nobby who was capable of getting them home without his masters help. The horse would edge into the bar but his legs sank through the floor.

Another time a group of friends met on a Saturday lunchtime they hoisted the local bakers bread basket up the flag pole. Today's Flag Master lives next door and regular flag ceremonies are carried out.

Starting as an Inn around 1740 many alterations have been made to the building by landlords John Smith, the Rosewell family, the tenancy passing to Henry Rook in 1815 and many other publicans who introduced live music to the Inn. August 2017 saw the arrival of Kerry and Mary Sinclair the latest landlords who are refurbishing the Inn.

They have continued Live Music, Karaoke evenings and plan Quiz nights, riders enjoy their hospitality and groups are welcome.







**Folk Concert in aid of the Rowlands Castle Heritage Centre  
St John's Church Hall, Rowlands Castle**  
**Driftwood - singing & playing their own songs**  
**Froddy - playing songs by the likes of John Denver, Ralph McTell &  
Tom Paxton**  
**Fri November 23<sup>rd</sup> 7.30pm Tickets £5 on the door.**  
**BYO wine etc.**



### VISIT OUR ACCLAIMED WORKING MODEL RAILWAY

Set in the centre of Rowlands castle, this scale model shows the troops, vehicles and trains as they were during the approach to D-Day in 1944.

**On display at Stansted House**  
**Sun, Mon, Tues and Wed**  
**1 - 4pm from Easter until the end of September**  
Admission is free, admission to Stansted House is extra

[www.rowlandscastleheritagecentre.org.uk](http://www.rowlandscastleheritagecentre.org.uk)  
[www.facebook.com/rowlandscastleheritagecentre](https://www.facebook.com/rowlandscastleheritagecentre)



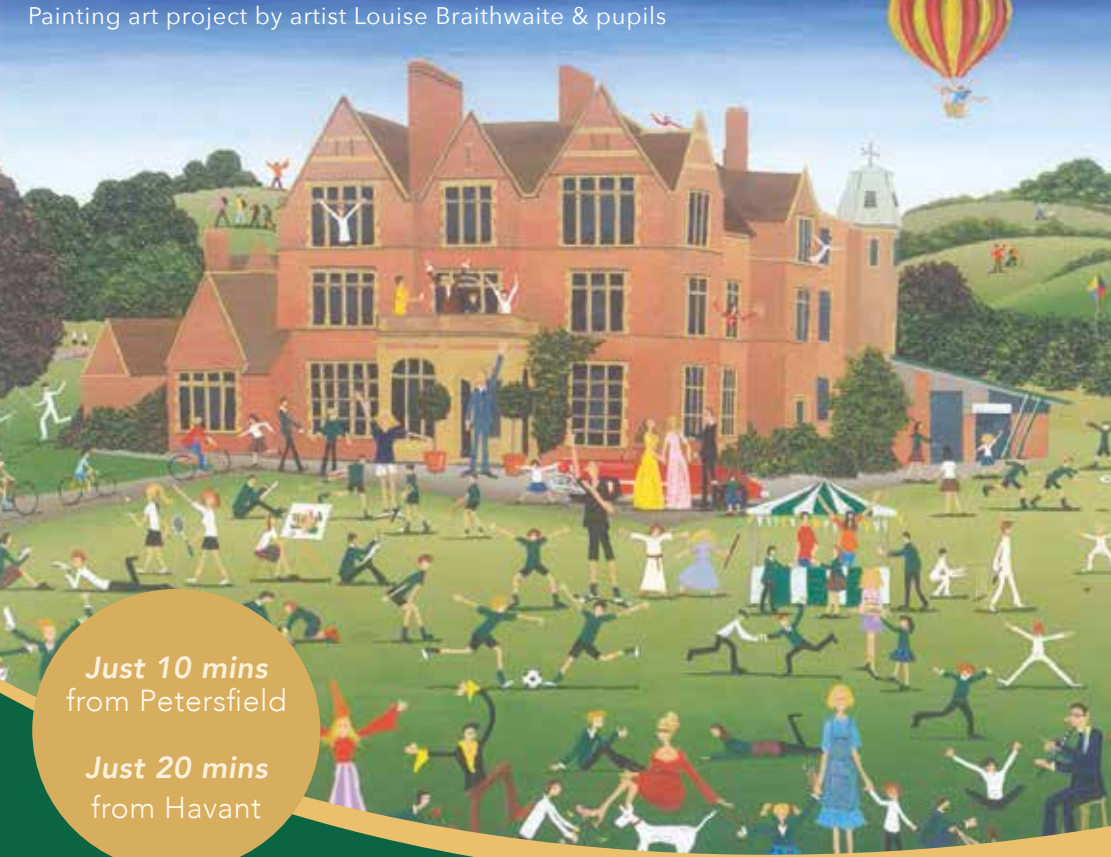
## / THE VILLAGE AND SURROUNDINGS IN PICTURES

Autumn scene near Rowlands Castle Lodge



[ksphoto.co.uk](http://ksphoto.co.uk)





Just 10 mins  
from Petersfield

Just 20 mins  
from Havant



# DITCHAM PARK SCHOOL

Excellence in education from 4 to 16 years  
in a stunning location on the South Downs.

Scholarships and Bursaries available.

Petersfield Hants GU31 5RN

Call us on: 01730 825 659 [www.ditchampark.com](http://www.ditchampark.com)

## / CHURCH ON THE GREEN

# NEW BEGINNINGS!

Jace Clark  
Student Pastor



It doesn't seem true that the last time of writing for this wonderful magazine, we were enjoying some fantastic weather! In fact, the Met Office were comparing this years Summer to the one of 1976!

That said, it was lovely to have such fantastic weather for the Fair in July. There were so many stalls with such a variety of things for sale, shows to see and rides for the children. We had at the Church, a mouth watering display of cakes and refreshments, with many satisfied customers. This year the proceeds made went to our much anticipated chapel renovations.

Talking of Chapel renovations.....with over two years of careful planning, Prayer and preparation , the building work has finally got underway. There is much to be done, including the removal of the pews and the heating, which dates back to 1947! A full refurbishment of the walls, wainscoting, roof, flooring and décor. We, as a Church, are so much looking forward to the completion of said building work and when

all the work has been done, we are planning a celebration for 'all' to see, so please do keep a watchful eye via the Grapevine and other advertisements for a date when we plan to do this. Rowlands Castle, as a Village have been very supportive of the work and together with the community, charities and kind individual donations, we have managed to secure the needed funds to update the Chapel.

Dare we mention it.....but Christmas is only around the corner. Already in place will be our Christmas Cafe Church on 2nd December at 10.15am, on December 16th 10.15am will be a Communion, Worship and Carol morning and on December 23rd will be our Christmas Carol Service, so again, please keep a look out via the Grapevine and our outside posters for timings and other upcoming Christmas services.

May we all, at Church on the Green wish you all a very Happy, safe and peaceful Christmas and New Year. God bless.

# LOWER BACK PAIN & WHAT YOU CAN DO

Natalie March

Tips and exercises from Award Winning Physio Natalie March from Physio-logical, a chartered physiotherapist based in Rowlands Castle and Havant.

Lower back pain is reported by 80% of people at some time in their life but a lot of people just live with the pain. People suffering from lower back pain are those with jobs that involve driving, builders, golfers to name a few!

Back pain can have many root causes, not least poor posture that causes (an imbalance and stiffness in certain muscles) so I have chosen exercises below that will help mobilise the back and open up the joints to increase flexibility.

Hands on physiotherapy treatments including; massage, mobilisation, manipulation, myofascial release, neural release, combined with stretching, core stability exercises and strengthening exercises is an effective treatment for lower back pain. We also offer acupuncture which is great for the treatment of lower back pain too.

## Client testimonial

"Assessment of my lower back problem and full explanation of why I was suffering and the introduction to a series of exercises to significantly improve flexibility of my spine and increase muscle strength in the affected area. The treatment was good value for money and I would recommend to a friend" (Mr. L)

## Exercises for Lower Back Pain

Please be aware of your body and take advice from your GP before exercising if you have any aches or pains, or send me an email [enquiries@physio-logical.net](mailto:enquiries@physio-logical.net) for advice and guidance.



## Child's Pose (Lumbar Spine Flexion)

- Kneel down with your arms stretched out in front and head lowered
- Sit back onto your heels
- Hold for 30 seconds
- Repeat two times, two times a day



## Back Arching (Lumbar Spine Extension)

- Lie on your front
- Push up with your arms and arch your back
- Repeat ten times, two times a day.
- Hold the last position for a 30 seconds



## Knee Rolling (Lumbar Spine Rotation)

- Lie on your back with your knees bent up and feet flat on the surface.
- Keep your knees together and roll them steadily from side to side.
- Repeat ten on each side, two times a day.
- Hold the last position for a 30 seconds each side



## Side Bending (Lumbar Spine Side Flexion)

- Stand with your hands against the sides of your thigh.
- Slide one hand down the same thigh, bending to that side and avoiding any twisting
- Repeat ten times, three times a day



## Special Offer

Have you had a Stroke? Do you have Parkinson's Disease or MS? We can help you. To claim your FREE 15 minute assessment at our Havant clinic with our specialist neuro physiotherapist please call 07835 712306 or email: [enquiries@physio-logical.net](mailto:enquiries@physio-logical.net), terms and conditions apply. Please quote: Village & Valley. We offer affordable treatment plans.



## ST JOHN'S SCHOOL OUTDOOR LEARNING

Jayne Pavitt Headteacher  
Prue Amner Chair of Governors

There's a real buzz around getting children into the outdoors at the moment – outdoor learning, outdoor play, outdoor education, wild time, everyone's talking about how important it is to get our children outdoors.

St John's School has the benefit of very large grounds which were transformed into an environment suitable for a wide range of outdoor learning activities. Within the grounds is a 'classroom in the sky' treehouse with two pods capable of accommodating 15 pupils. A woodland trail, peace garden, willow dome, outdoor musical instruments and climbing wall and equipment.

These all connect into the National Forest School's curriculum and offer learners the opportunity to take supported risks appropriate to the environment and to themselves. Children develop a variety of skills including planning, observing, team working in order to become confident, independent and creative learners. For example, children will know how to light a fire and the risks involved, fire safety and safety for others, how to use a peeler to whittle a carrot, use a bow saw to cut a cookie and clamp drill to drill a hole in it. Good team work is developed by a group of children when laying



out skittles, deciding the value of each skittle knocked down, deciding whose turn it is and using mental arithmetic skills keeping tally of totals in their head.

As well as this Forest School initiative, all the children regularly learn national curriculum subjects through outdoor activities come rain or shine. Every child has wellington boots at the ready!





**JOANNA THURGUR**  
— CHIMNEY SWEEP SERVICES —



Tidy, thorough and professional chimney and flue cleaning service

Telephone: 07731 525673

Email: [info@joannathesweep.co.uk](mailto:info@joannathesweep.co.uk)

Website: [joannathesweep.co.uk](http://joannathesweep.co.uk)



## YOU TOO CAN HAVE A SAY

All content for this magazine is provided by readers like you and new contributions are most welcome.

### CONTRIBUTION GUIDELINES

The Village magazine is published three times a year by the RCA. The aims of the RCA are to act as a channel of communication for the village, to conserve its character and to enhance the life of its residents.

Contributions for publishing are welcomed however, please note that all materials should be submitted by the following dates:

**SPRING issue: 18th March**

**SUMMER issue: 18th June**

**AUTUMN issue: 18th October**

#### PLEASE NOTE:

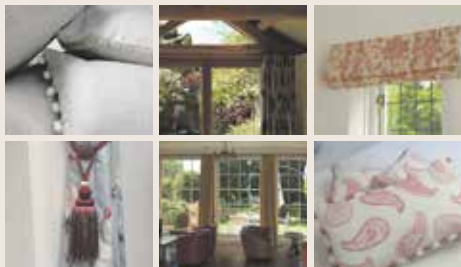
*Due to printing deadlines, late submissions cannot be considered for publication.*

Contributions should be between 200-300 words, and you should provide at least one image to accompany your article (max 10MB file size). Please include images as a separate file(s), not as part of a Word doc.

Send your contribution to:  
[editor@rowlandscastle.com](mailto:editor@rowlandscastle.com)



### Elizabeth Turner Soft Furnishings



A small, professional soft furnishings business, providing a bespoke service to meet our customers' exact requirements.

All of our products are hand-made to a very high standard. We also supply fabric, a range of curtain poles, tracks and other accessories.

Courtyard 4, Sindles Farm, Aldsworth, Emsworth PO10 8QS

01243 389939

[info@elizabethturner.co.uk](mailto:info@elizabethturner.co.uk)  
[www.elizabethturner.co.uk](http://www.elizabethturner.co.uk)



## S. Roberts Upholsterers

Professional upholstery.

Contract and domestic - any size work undertaken

We provide a free measuring and quotation service and you can find us on [Checkatrade.com](http://Checkatrade.com)

**Checkatrade.com**

Call on 01243 377200  
for all your upholstery requirements

[www.re-upholster.co.uk](http://www.re-upholster.co.uk)



Unit 10, Palmers Road Industrial Estate, Emsworth, Hants PO10 7DH



## We believe that every day should be lived to the full...

We have two beautiful family run care homes that offer person centred Residential and Nursing care. Our compassionate, dedicated team are on hand 24 hours a day to support with all aspects of daily living. We support individuals seeking respite, convalescence and long term care.

*A warm welcome awaits you*

- Long term, convalescence and respite stays
- Dining areas looking onto beautiful gardens
- Landscaped patio and relaxation areas
- Ensuite single bedrooms
- Nutritious home cooked meals
- Large homely lounge areas
- Wi-fi available



72 – 74 Havant Road  
Emsworth  
Hampshire  
PO10 7LH  
Tel: 01243 372445



Prinsted Lane  
Prinsted  
West Sussex  
PO10 8HR  
Tel: 01243 372024

[www.springfieldnursing.co.uk](http://www.springfieldnursing.co.uk)



02392 412 606

info@stylestudio-rowlandscastle.co.uk

### Your local Hair and Beauty Salon

Recommended by The Good Salon Guide, we're situated in the heart of Rowlands Castle.

Offering a professional portfolio of hair and beauty treatments by a team of experienced hairdressers and beauticians.

- Hair for ladies and gents
- Beauty
- Special packages
- Late appointments available by request

Contact us: 3 Links Lane, Rowlands Castle, Hampshire, PO9 6AD

Find us online: [stylestudio-rowlandscastle.co.uk](http://stylestudio-rowlandscastle.co.uk)

## CHRISTMAS FAIR

Saturday 24th November  
In the Parish Hall  
From 11am to 2pm

Everyone is welcome. Please come along and support the NSPCC.

There will be craft and gift stalls, a raffle, Santa's Grotto, Christmas Carols from St Johns Primary School, entertainment from the Cantando Voice Choir, refreshments, a cake stall and Chocolate tombola.



### Volunteers Needed

Would you like to be part of the Rowlands Castle NSPCC committee? We are looking for new members to help raise money for this very worthwhile charity. It involves attending about ten meetings over the year and helping at two or three fund raising events including the Village and Christmas Fairs.

If you are interested please contact: Sue Arnold at [sueandjona@aol.com](mailto:sueandjona@aol.com) or on 07831 447806

## CALLING ALL VOLUNTEERS

Can you spare a few hours a year to help fundraise for Rowlands Castle St John's School? If so, we're looking for Parents, Grandparents, Carers, Friends, Family (anyone!) to help with St John's PTA exciting calendar of events. You can even help whilst you're doing your online Christmas shopping through...

### Easyfundraising

Do you shop online? Would you like to raise money for your village school at the same time with very little effort and no extra cost? WIN/WIN I'd say!

1000's of online shops such as Amazon and John Lewis will give commission for your purchase, this gets turned in to a donation for your good cause without costing you a penny more.

Here's how to do it:

Go to [www.easyfundraising.org.uk](http://www.easyfundraising.org.uk)  
Search for "Rowlands Castle St John's CEC Primary School"  
Press 'Join Us'  
Create an account  
....shop away!

**From All of Us At St John's PTA We Wish You a Happy and Healthy Festive Season!**

If you would like to get involved or would like more information about the PTA please contact Becky on 07880438277.

## LIFE DRAWING CLASSES AT STANSTED HOUSE



Life Drawing Classes are planned for the winter season starting on November 4th. The first of these is on the 4th November from 10-12 in the Blue Drawing Room at the cost of £20 per person for two hours of tuition from an experienced local teacher, Jules Roper. Jules teaches Art at Bishop Luffa School and has also taught Life Drawing at the Spring Arts Centre at Havant. Jules will offer individual guidance during the session, a direction to work on, or perhaps looking at a particular artist and their use of line and colour. She will also offer worksheets each session on either the basics of life drawing or more challenging ideas. She is happy to offer as much or as little guidance and instruction as people desire. We have 12 lightweight folding easels which can be borrowed but obviously with 18 people we will need some people to bring

their own, attendees will need to bring their own materials: pencil, pastel and charcoal are all permitted.

Places are limited to 18 per session and people can either attend single sessions or all 5. The November 4th date is confirmed and it is hoped that the other dates (first Sunday of the month through to March) will go ahead if we have sufficient demand.

'Sketching on Sunday' will also take place from 10-1 on the same dates - this is £5 per person and is an opportunity to draw inside the house and to meet other sketchers. Refreshments are included at both these events.

More details on the 'What's On' page of our website.



**Holistic healing**

**Helping you to  
help yourself**

**Stress, anxiety, trauma  
Recurring seasonal illness  
Chronic health conditions  
All inter-related affecting  
many aspects of your life.  
Can be fixable!**

**Susan Cowe Miller 07917 680967  
Rowlands Castle 02392 410090**

**EFT, Matrix Reimprinting, Meta Health,  
Counselling Skills, Reiki**

[www.hampshire-eft.co.uk](http://www.hampshire-eft.co.uk)  
[susan@hampshire-eft.co.uk](mailto:susan@hampshire-eft.co.uk)

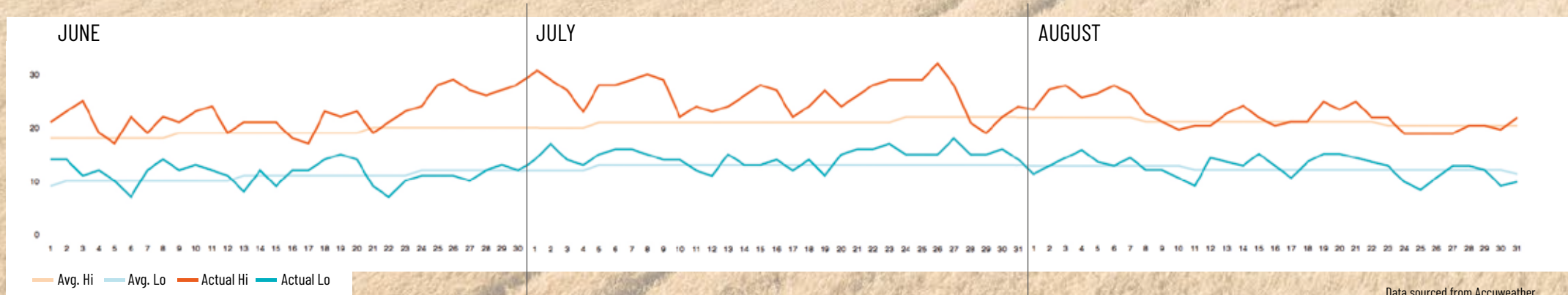
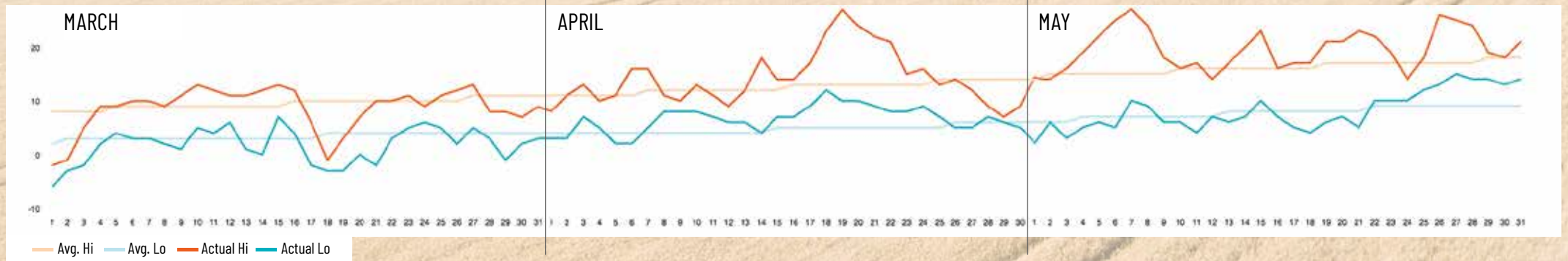


# FEELING THE HEAT



2018 was the joint hottest summer on record for the UK as a whole, and the hottest ever for England (Met Office).

This is an overview of how the summer temperatures were felt in Rowlands Castle.



Data sourced from Accuweather



**NURSERY**

Where play and learning fit together

Reg Charity No:

1088132

St Johns CEC School Rowlands Castle  
For children aged 2 to 5 years  
Contact Manager Lorraine Bryant  
[jigsawplayschool@hotmail.co.uk](mailto:jigsawplayschool@hotmail.co.uk)  
[www.jigsawplayschool.co.uk](http://www.jigsawplayschool.co.uk)  
02392412164



## Burchett Decorators

- Domestic, Commercial & Insurance Work
- 22 Years Experience
- All Types of Decorating including Wallpapering, Coving & Carpentry
- Fully Insured
- Clean, Tidy & Friendly Service

Ring for FREE Estimate  
or Just Helpful Advice

**07866 691 984**  
**023 9241 3548**

Email: [Burchett.davis@btinternet.com](mailto:Burchett.davis@btinternet.com)

Burchett Decorators, Finchdean, Nr. Rowlands Castle, Hampshire

Keith was friendly, reliable and worked exactly as he promised to, neat, tidy and very personable

Customer, Stedham, 2012



Portsmouth  
High School

GDST  
GIRLS' DAY SCHOOL TRUST

## Open Morning

Saturday 6 October  
9.00 to 12.30

An independent  
school for girls  
from Pre-School to  
Sixth Form achieving  
outstanding results

*School minibuses  
run to Rowlands Castle daily  
in term time*

*Where girls do better*



[www.portsmouthhigh.co.uk](http://www.portsmouthhigh.co.uk)

023 9282 6714 • [admissions@por.gdst.net](mailto:admissions@por.gdst.net)



# DACD (RC) CRICKET CLUB

Jonathan Law

## Second Half Season Report 2018

DACD returned to Belgium in June playing Royal Brussels CC who were hosting a charity fund raising event attended by members of British expat society including the British Ambassador to Belgium.

Bowling first we struggled against quality batsmen including Benito an ex-Italian national player. Retiring 7 batsmen on 30, Royal Brussels reached 258-3 off 35 overs. Facing bowling of equal quality we struggled to 142-5 with Guy Andrews retiring on 30. A surreal moment during our innings came when we all left the field while the Ambassador made a speech and presentation.

Back on home soil our mixed fortunes continued with midweek victories but no success on Sundays.

Finally in August we recorded our first Sunday win, away to Lavant. Bowling first in a timed game opening bowler Mike Whyatt ripped through the Lavant top order taking 5-21. Lavant stumbled to 36-7 before lower order resistance took them to 104 all out. An opening partnership of 57 set us on our way. Tim Barton top scored with 49 and despite a mini collapse we won by 5 wickets.

Later in August the club organised a charity sixes tournament raising funds for Teach Sri

Lanka. An eclectic mix of cricketers and non-cricketers sustained by Sri-Lankan street food (and beer) raised over £1,200.

Our final midweek game of the season saw a run fest against the Izaak Lions pub team. Bowling first we saw the ball dispatched all around and out of the ground as Izaak Lions reached 163-3. Alex Andrews set the tone in the run chase retiring for 28 off 9 balls. Contributions all the way down the order eventually saw DACD reach 164-4 off 19.1 overs for an unlikely but well deserved victory.

2018 Playing Record

Played 22 Won 9 Lost 12 Drawn 1

Jonathan Law

DACD (Rowlands Castle) CCTower of Pisa.

2018 Playing Record

Played 22 Won 9 Lost 12 Drawn 1

Jonathan Law

DACD (Rowlands Castle) CC

\*Malcolm Nash was the bowler when Gary Sobers became the first batsman to hit 6 sixes in an over of first class cricket in 1968.



# SOUTHERN MOWER SERVICES

New and used lawn mowers, strimmers, hedge trimmers, chain saws, ride on mowers, leaf blowers and more



**Our highest priority is service to our customers**

**Sales | Repairs | Service | Parts**

Unit 4 Hillside Industrial Estate, London Road, Horndean, Hampshire PO8 0BL

**Tel: 02392 592954**

**Email: [info@southernmowerservices.co.uk](mailto:info@southernmowerservices.co.uk)**

**[www.southernmowerservices.co.uk](http://www.southernmowerservices.co.uk)**

## FURTHER AFIELD

### Antiques and Collectors Fair

Sunday 11th November & Sunday 9th December  
10:00 - 15:30. £1 entrance.  
Emsworth Community Centre, North Street,  
Emsworth, Hants, PO10 7DD

Over 60 stall-holders of varied and interesting antiques & collectables will be trading.

Browse the militaria, toys, dolls & teddies, haberdashery, silver, ephemera, postcards & badges, pictures, clocks & books to name a few with superb hot & cold refreshments and home-made lunches available to keep you going throughout the day.

### Groundlings Theatre Tours

15 Nov 2018 Open 13:00 - onwards  
29 Nov 2018 Open 13:00 - onwards  
13 Dec 2018 Open 13:00 - onwards  
17 Jan 2019 Open 13:00 - onwards  
31 Jan 2019 Open 13:00 - onwards  
14 Feb 2019 Open 13:00 - onwards  
28 Feb 2019 Open 13:00 - onwards  
Portsea, Portsmouth

Get a fascinating insight into the history of the wonderful Groundlings building, as well as the famous names that passed through over the years.



### Emsworth Farmers' Market

17 November & 15th December  
St Peters Square, Emsworth, Hampshire,  
PO10 7AL

The best in Hampshire's food and drink, direct from the producers.

### Funland Hayling Island Winter Wonderland

24th - 25th November  
1st December - 24th December  
Funlands Amusement, Funlands, Hayling Island,  
Hampshire, PO11 0AG

Hayling Winter Wonderland is back at Funland, Hayling Island and this year it's bigger and better than ever! The elves at Funland have been busy creating a spectacular wonderland experience and we invite you to come along.

To start your journey you will be met by Santa's elves, who will take you on your visit to Santa, with a breath-taking walk through Wonderland, where you will meet Santa Claus himself and the kids will receive an early Christmas present!

Following your visit with Santa you will board the Funland Express, an indoor train journey through a stunning enchanted forest.

ksprophoto.co.uk



Christmas Glow at RHS Garden Wisley

### The Dickens Christmas Festival

30th November - 2nd December  
10:00 - 18:00  
Portsmouth Historic Dockyard

Travel back in time to a bygone era, where snowy Dickensian streets welcome you to a world of festive cheer, as you enjoy one of the south's finest Christmas festivals.

Treat yourself to some well-earned retail therapy as you browse our Christmas markets. We're bringing you brand new markets for 2018, the Hampshire Makers market - a celebration of local handmade talent! Plus, Dickensian street performers, traditional green Father Christmas and so much more!

### Christmas Glow at RHS Garden Wisley

1 December - 1 January  
16:00 - 20:00  
Wisley

Walk along the enchanting trail and see giant trees illuminated from below, rippling reflections in pathside ponds where giant illuminated flowers float and giant blooms sway against the evening sky.

Enter the Glasshouse through wooden doors and be transported into the Woodland Realm of the wood elves.

These elves live in their treetop houses, hung with plants in glass balls, sparkling with crystals that twinkle like raindrops.

Spot them as they care for Santa's reindeer, and all the woodland creatures, many of which you can also see along the stream running through the wooded landscape. Booking essential for everyone.



## / GREAT DAYS OUT

*continued*



### **Southampton Christmas Market**

15 November- 23 December  
10am-8pm

This is a traditional German market operated by internationally renowned WELA Märkte and features totally unique, individually designed alpine chalets with traditional German fayre, from bratwurst and waffles to gingerbread hearts and candied fruit.

The market includes over 40 independent stallholders offering a range of hand-made, authentic gifts including wooden toys, clothing, jewellery as well as Christmas decorations.

The Southampton Christmas Festival features daily entertainment by a Bavarian musician with traditional Christmas music, carol singers and schoolchildren. In addition to the market and the musical entertainment, one of the highlights is the 'Flying Santa' show, which is unique in the UK. The Flying Santa Show - Santa and his reindeers fly above the market twice a day.

The 2018 Southampton Christmas Festival will open on Thursday 15 November, with the Southampton Christmas Lights Switch-on at 5pm, followed by Santa's first flight!

### **The Cathedrals Express Steam train to Gloucester Christmas Market**

20 November  
09:40 - 19:20  
Guildford Railway Station, Station Approach,  
GUILDFORD, Surrey, GU1 4UT

Enjoy a magical day out by steam from Guildford, through the frosty landscape of Berkshire, Wiltshire and the Cotswolds to Gloucestershire.

Here, you can join in with the festive cheer at the Gloucester Victorian Christmas market at the historic Gloucester Quays, with more than 250 stalls selling a wide range of locally produced food, drink, unique handmade gifts, jewellery, accessories and lots more.

A cast of jolly Victorian characters will be bringing the market to life transporting you back in time.



### **Portsmouth Model Railway Exhibition**

17 November  
10:30am-16:30pm  
Admiral Lord Nelson School, Dundas Lane,  
Portsmouth, Hants, PO3 5XT

The South Hants Model Railway host their latest annual Model Railway Exhibition at the Admiral Lord Nelson School on Dundas Lane. Not only is this the longest running model railway show in the area, but it is rapidly gaining a national reputation as an exhibition that shows the very best of this fascinating hobby.



*Festive High Tea at Emirates Spinnaker Tower*

### **Christmas Market at Weald & Downland Open Air Museum**

23 - 25 November  
10:30 - 16:30  
Weald & Downland Open Air Museum, Town Lane, Singleton, Chichester, South East England, PO18 0EU

Find that perfect gift and enjoy a great day out at the Museum! Our bustling Christmas Market sees over 150 stands - selling arts, crafts, food, unusual gifts and much more - 'pop up' in our collection of rescued historic buildings and houses, in our award-winning Gridshell building and around other locations on the Museum site. Follow the signs and explore!

### **Petworth House Costumed Encounters**

24 - 25 November  
11:00 - 16:00  
Petworth House and Park, Petworth, West Sussex, GU28 9LR

Go 'below stairs' in the early 1800s and learn more about Georgian servant life from the costume interpretation team.

### **Festive High Tea at Emirates Spinnaker Tower**

1 - 31 December  
12:00 - 16:30  
Emirates Spinnaker Tower, Gunwharf Quays,  
Portsmouth, Hampshire, PO1 3TT

Experience the most magical time of the year with extraordinary views and irresistible treats in the serene surroundings of The Clouds Cafe at Emirates Spinnaker Tower. Includes selection of sweet and savoury bites, accompanied by teas and coffee.  
£55.00 per couple.

# DO YOU HAVE A STORY TO TELL?

Book design  
Brochure design  
Graphic design  
Website design  
Ad design  
Campaign design

Professional design for  
your memoirs, your  
corporate image or your  
brand story telling.



Contact your local design partner  
kelvin@t-eight.co.uk

www.t-eight.co.uk

## / GREAT DAYS OUT *continued*



**I Do! Wedding dresses over 250 years**  
Until 6 January 2019  
11:00 - 15:00  
The Gallery, Winchester Discovery Centre,  
Jewry Street, Winchester, Hampshire,  
SO23 8SB

From gowns and veils to bonnets and shoes, the extravagance of the 1770s to the elegance of 2018, this stunning exhibition tells the stories of the personal choices made by brides-to be as they prepare to say 'I do'.

Whether it's something old, something new, something borrowed, something blue, I Do! shines a spotlight on wedding dress fashions over the past 250 years.

This listing is provided as a community service. The editor, RCA committee and associates accept no responsibility for any changes, cancellations or inaccurate information. You are advised to always check an events status before attending.

## MacDonald Oates LLP SOLICITORS



Leading Client Service

Residential Property  
Family Law  
Mediation Services  
Wills, Probate & Trusts  
Litigation & Dispute Resolution  
Employment Law  
Company & Commercial  
Commercial Property

Petersfield Office  
Tel: 01730 268211 | Fax: 01730 261232

Midhurst Office  
Tel: 01730 816711 | Fax: 01730 816016

[www.macdonaldoates.co.uk](http://www.macdonaldoates.co.uk)

## PILATES, FITNESS YOGA AND BARRECONCEPT

**POSTURE PILATES** - to re-balance the body by improving posture, muscle tone, flexibility and core stability.

**FITNESS YOGA** - stretch, strength with Yoga postures.

**BARRECONCEPT** - all body workout, stretches and tones muscle whilst burns fat.



**Day/Evening Classes available small friendly classes held in a private local studio.**

Please Contact: Stacey Merritt BSc  
[merrittstacey@hotmail.com](mailto:merrittstacey@hotmail.com) / 07957 215459

Register  
of  
Exercise  
Professionals







**HEATING • PLUMBING • BATHROOMS**

I can help with all your boiler, heating, plumbing and bathroom needs. And I'm right here in the village, so can call round at short notice.

**Here's my number.  
Please keep it in a safe place.**

**07905 908143**

[www.nicradcliffe.com](http://www.nicradcliffe.com)  
nic@nicradcliffe.com



City & Guilds  
Qualified



## MORRIS BUILDING SERVICES

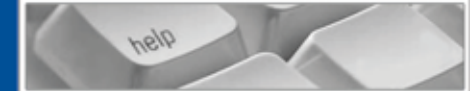
Shaun Morris  
113 Finchdean Road, Rowlands Castle, Hants, PO9 6EN

RENOVATIONS  
ALTERATIONS  
SMALL WORKS

ALL ASPECTS OF PROPERTY MAINTENANCE AND  
REPAIRS, INTERNAL AND EXTERNAL

ROWLANDS CASTLE FREE ESTIMATES  
(023) 9241 3130 07941 742598

**microsomma**



**IT Support for Home  
& Small Business**  
[www.microsomma.com](http://www.microsomma.com)

**David A. J. Somma BSc**  
Computer Systems Engineer

Reliable & Local  
Available 7 Days

Qualified & Experienced

**0845 0170772**  
**07796 346526**



[david@microsomma.com](mailto:david@microsomma.com)

## HELEN'S AIRPORT CARS

"With US it can often cost less than rail or airport parking"

Saloons  
MPVs  
Estates  
4 - 8 seaters



Reliable  
Affordable &  
Comfortable  
Pre-booked  
24hr

**01243 820820**



**Book Online Now** [www.airporttaxi.co.uk](http://www.airporttaxi.co.uk)

**We have a driver near you! 01243 780999**

## N • K • S Building & Landscapes

Drives • Patios  
Stonework • Drainage  
Garden Walls • Building Maintenance  
Alterations and Renovations  
Free Estimates

**Nigel Sykes**

023 9241 0118  
07788 126 547

Please keep this leaflet in a safe place  
for when you need my services.

PROFESSIONAL PLUMBING  
& HEATING SPECIALISTS

**A. A. BARRETT**

51 Hatchmore Road  
Denmead  
Waterlooville  
PO7 6TE

Tel: 023 92258057  
Mobile: 07802321269

Tel: 023 92258057  
Mobile: 07802321269

# THE LAST LAUGH



*"What carol would you like us to text you?"*

## ADVERTISE IN THIS MAGAZINE

The village magazine is funded entirely by advertising. If you would like to promote your business or services and advertise on these pages please contact Prue Amner on the address below:

[prue.amner@gmail.com](mailto:prue.amner@gmail.com)

THANK YOU TO OUR SPONSORS

THANK YOU!

## / NUMBERS TO KNOW

### WHAT WHERE HOW WHEN

EMERGENCY	999
NON EMERGENCY POLICE	101
NON EMERGENCY MEDICAL	111
ELECTRIC POWER CUT	105
GAS EMERGENCY	0800 111 999

#### Rowlands Castle Pharmacy

12 The Green  
Rowlands Castle  
PO9 6BN  
T 02392 413952

#### Rowlands Castle Surgery

12 The Green  
Rowlands Castle  
Hampshire  
PO9 6BN  
T 02392412846

#### Practice in the Park (Dentist)

4 Basing Road  
Leigh Park  
Havant  
Hants  
PO9 5AG  
T 02392 486660

#### Recycling Centres

Location: Behind Castle Inn, Rowlands Castle  
Waste Accepted: Glass, Textiles  
Location: Household Waste Recycling Centre,  
Harts Farm Way, Havant, PO9 1HS  
Waste Accepted: Go to [www.hants.gov.uk](http://www.hants.gov.uk) for  
full details or call 0300 555 1389

# fabulous flooring with a perfect fit!



visit our website  
to find out more  
[waterloovillecarpets.co.uk](http://waterloovillecarpets.co.uk)

Service is the secret of satisfied customers and satisfied customers are the secret of our 50 year success.

- Fabulous Carpets from Greendale, Brintons and Ulster
- Crucial Trading/Alternative Flooring Specialist
- Fabulous Vinyl Tiles from Amtico, Karndean and Vusta
- New Click only Vinyl Planks and Tiles from Karndean
- Fabulous Quickstep Laminate Flooring
- Oak Floors – Engineered Planks and Solid Click
- Fabulous Bamboo, Cork and Sustainable Flooring
- 12 MONTHS INTEREST FREE CREDIT on all products



We promise you a flooring that fits your requirements, fits your budget and fits beautifully into your home. Please call in, anytime.

## A pleasure to come home to.....

31 The Square, Petersfield, Hampshire Telephone: 01730 262223/267381 Fax: 01730 267394  
email: [sales@waterloovillecarpets.co.uk](mailto:sales@waterloovillecarpets.co.uk) [waterloovillecarpets.co.uk](http://waterloovillecarpets.co.uk)





BUILDING CONTRACTORS

COMMERCIAL, INDUSTRIAL and  
MAJOR DOMESTIC WORKS

Joinery Mill, The Green, Rowlands Castle,  
Hampshire. PO9 6BW

Tel 023 9241 2741  
www.winnicott.co.uk

*Established*  
**1904**

Fax 023 9241 2212  
mail@winnicott.co.uk

# GEORGE IDE LLP solicitors

Offices in Chichester, Guildford and London

Your leading law firm for:

- Wills & Probate
- Commercial Property & Business Services
- Family & Divorce
- Personal Injury & Clinical Negligence
- Residential Property
- Wealth Management



*Serving the community for over 50 years*

T: 01243 786 668 • E: info@georgeide.co.uk  
www.georgeide.co.uk



**homehardware**

**Not just paint!**  
**WE COVER EVERYTHING!**

- ✓ GREAT SAVINGS ON MANY RANGES
- ✓ FRIENDLY EXPERIENCED STAFF
- ✓ **OPEN SUNDAYS**

**Dulux**  
PAINT MIXING CENTRES

**Austens**  
Petworth Tel: 01798 342104  
Billingshurst Tel: 01403 782963  
Midhurst Tel: 01730 815979

**Alton** Tel: 01420 85115  
**Emsworth** Tel: 01243 376852  
**Romsey** Tel: 01794 512141  
**Rowlands Castle** Tel: 02392 412332

[www.rowlandshomehardware.co.uk](http://www.rowlandshomehardware.co.uk)

**POST OFFICE**
**OPEN 7 DAYS A WEEK**

ENVIRONMENTAL HEALTH IN  
AND AROUND THE VILLAGE

# DOG FOULING SCOOP IT, BAG IT, BIN IT

## THE LAW

A dog owner or walker must remove their dog's mess from land used by the public. If you don't do this, you may be given a fixed penalty fine of £50 by a dog warden or other council officer. You may also be prosecuted and fined up to £1,000. Responsible dog ownership means always taking a scoop or bags with you, and disposing of any mess in bins provided.

## REPORTING

Report dog fouling online or call Animal Welfare on 01730 234319.  
[www.easthants.gov.uk](http://www.easthants.gov.uk)

This notice is provided as a public service announcement.

Content sourced from East Hampshire District Council



## / NUMBERS TO KNOW

*continued*

### Havant Library

T 0300 555 1387 9.30 - 5pm, Monday to Saturday

### East Hants District Council

T 01730 266551, 9am to 5pm, Monday to Friday.

### Hampshire County Council,

T 0300 555 1375

Use [www.hants.gov.uk/aboutthecouncil/contact](http://www.hants.gov.uk/aboutthecouncil/contact) for a list of relevant numbers.

Open 8:30am to 5pm

### Rowlands Castle Parish Council

The Parish Office is open to the public between 10am and on 12 Noon on Tuesdays and Thursdays, and at other times by appointment.

Rowlands Castle Parish Council,  
11 The Green, Rowlands Castle, Hampshire  
PO9 6BW.

T 02392 413044

E [clerk@rowlandscastlepc.org.uk](mailto:clerk@rowlandscastlepc.org.uk)

W [www.rowlandscastlepc.org.uk](http://www.rowlandscastlepc.org.uk)



Created by Dooder - Freepik.com

# MARTIN STEELS LTD

INDEPENDENT OPTOMETRISTS & CONTACT LENS PRACTITIONERS

## ENHANCED EYE EXAMINATION & PROFESSIONAL OPTOMETRIC CARE

### Including

- Ultra-widefield Optomap and 3D-OCT scan.
- Specialist retinal and glaucoma tests.
- Advanced dry eye treatments.
- Contact lens fitting and aftercare (inc. medical contact lens).
- Designer eyewear.
- Designer sunglasses, available in prescription.

LINDBERG

optos

Maui Jim

adidas

FACE A FACE  
PARIS

PORSCHE DESIGN  
EYEWEAR

Silhouette  
AUTHENTIC EYEWEAR. SINCE 1964.

4 Old Flour Mill, Emsworth

01243 375 141

[www.martinsteels.com](http://www.martinsteels.com)

Monday – Friday: 9.00am to 5.30pm  
Saturday: 9.00am to 1.00pm





“Aqua were brilliant from start to finish.  
Friendly, professional and tidy!  
We would happily recommend them.”

- Mr & Mrs H (Waterlooville)

**AQUA**  
KITCHENS & BATHROOMS

“We wanted a wow factor whilst keeping the practicality of a busy kitchen - Aqua exceeded our expectations”

- Mrs R (Hayling Island)



## RENEW, RELAX, ENTERTAIN

Here at Aqua we deliver a great customer experience, bespoke design, attention to detail and installations that look fabulous. After more than 1,200 projects and over 400 great customer reviews we aren't the only ones to think this. We take enormous pride in the quality of our installations so you have complete satisfaction.

If you're looking to renew your kitchen or bathroom and need a trusted professional supplier, then talk to Aqua today.

**Call us on 023 9246 6007 to arrange your free survey.**

See our beautiful showroom at 18 Elm Grove Hayling Island.