

# Rowlands Castle Association

Greening  
Issue

Autumn 2015

Village Magazine

[www.rowlandscastle.com](http://www.rowlandscastle.com)

# AQUA

BATHROOMS



## Bathrooms designed especially for you...

At Aqua Bathrooms, we offer a tailored design service, helping you create the perfect bathing space in your home.

From concept through to completion, our experienced and talented designers will work with you to ensure every aspect of your new bathroom meets your requirements. Our experienced installation team will ensure your bathroom is installed correctly with minimum fuss and disruption to your home.

Our friendly and knowledgeable team are highly skilled and experienced and have built up a strong reputation for quality and reliability. All our work is fully guaranteed so rest assured that entrusting your bathroom design and installation to Aqua, you will be in good hands.

We look forward to welcoming you from  
*Simon, Dave and the Aqua Team*

Visit our Showroom  
18 Elm Grove,  
Hayling Island,  
Hampshire  
PO11 9EF

**T: 02392 466007**

**E: [enquiries@aqua-ltd.co.uk](mailto:enquiries@aqua-ltd.co.uk)**

**W: [www.aqua-ltd.co.uk](http://www.aqua-ltd.co.uk)**

-  Fully fitted showroom
-  Free design service
-  Detailed quotation
-  In house fitters
-  Fully guaranteed
-  Peace of mind



Proud members of

**Checkatrade.com**  
Where reputation matters



ROWLANDS CASTLE ASSOCIATION

## Village Magazine Autumn 2015

Message from Chair.....	4
RCA Committee.....	5
Obituary Eugene Billam.....	6-7
Local News.....	8
U3A.....	9
Village News.....	10-11
Women's Institute.....	12-13
Local Council News.....	14-16
District Council News.....	17-18
County News.....	19
Good Neighbours.....	20-21
Girlguiding.....	22
Gardening club.....	23
Neighbourhood Watch.....	24-25
Rowan's Hospice.....	25
St John's School.....	26
NSPCC.....	27
Photography.....	28-29
Domestic heating advice.....	30
Craft Fair.....	32
Tennis.....	34-35
Village Museum.....	36-37
Cricket.....	38-39
St John's Church.....	40-41
St Hubert's Church.....	42-44
Church on the Green.....	45
Flood Control.....	46-47
Langstone Cutters.....	48
History.....	49-51
RCA Quiz.....	53-54

The Village Magazine is published three times a year by the RCA. The aims of the RCA are to act as a channel of communication for the Village, to conserve the character and to enhance the life of the Village. *If you would like to make a donation to magazine printing costs there is a collection tin in the hardware store or you can pop an envelope through Martha Dombey's door 26 Drift Road.*

**Editor: Kevin Connell, 19 Mallard Road, Rowlands Castle, PO9 6HN**  
**Tel: 02392 413857      email: [editor@rowlandscastle.com](mailto:editor@rowlandscastle.com)**

*Cover picture: Eugene Billam*

*Taken by Catherine Billam*

# Rowlands Castle Association

## Message from the chairman of the RCA by Fiona Charlesworth Chair, RCA

### Look out for your Greening card in this magazine

Following the Public Meeting of Greening Rowlands Castle, you will find an A5 card inside this magazine with the top ten challenges chosen by villagers at the meeting. You can choose five or more of the challenges and as soon as you have done that, please tape the card, with the logo facing out, securely in a window so that it can be counted. We will be counting the cards roughly 2 weeks from your receipt of this magazine.

Once we have counted the cards, we will let you know the percentage of households participating- **(let's see if Rowlands Castle can beat all the other villages for the highest number of participants!)** and also how much money and CO<sub>2</sub> will have been saved by the village after the challenges have been carried out for a year.

This is such an easy way to help Climate Change by all pulling together. Small changes carried out by lots of people make a **BIG** difference- please do take part!

I am sad to announce the passing of Eugene Billam the founder of the RCA. Over the years Eugene has been a stalwart of the RCA and the many initiatives of the organisation have either been at his direct instigation or fully supported by him. Later on in the magazine is an obituary which goes a small way to presenting a flavour of his interesting life and many achievements. He will be greatly missed by all who had the pleasure to meet him. I know he would have been a keen supporter of the Greening initiative. Do please support it.

You will have enjoyed another brilliant firework and bonfire display organised by the RCA by the time you read this- many thanks to all who help to make it such a success.

I hope you have a very enjoyable festive season.



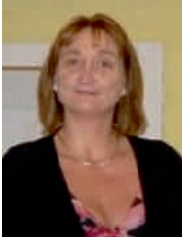
Fiona Charlesworth  
9241 0030  
[chair@rowlandscastle.com](mailto:chair@rowlandscastle.com)





# Rowlands Castle Association

## Your RCA Committee



Sue Morrison



Martha Dombey (Treasurer)  
9241 2108



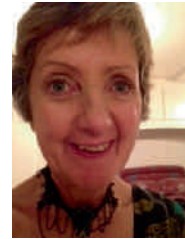
Gordon Charlesworth  
9241 0030



Geoff Jacobs



David Hooper



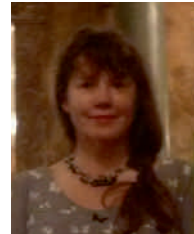
Helen Penfold



Joyce Jacobs



Paul Griffiths



Deborah Richards



Sue Leonard (Secretary)  
9241 3865



Gillian Lovegrove (Webmaster)  
9241 2426  
webmaster@rowlandscastle.com



Kevin Connell (editor)  
92413857  
editor@rowlandscastle.com

## Obituary– Eugene Billam (1931-2015) by Richard Milton

Eugene Billam was a distinguished research scientist who was also a founder chairman of the Rowlands Castle Association and editor of the RCA Village Magazine.

After attending Woodhouse Ashes grammar school in his native Sheffield, Eugene studied physics at Manchester University. He gained his Masters degree in astrophysics working at Jodrell Bank, Britain's first radio telescope - where he played cricket for Sir Bernard Lovell's team. For much of his career, Eugene was a research scientist at the Admiralty Research Establishment on Portsmouth Hill - later known as DSTL. Here he led the team that developed Phased Array radar - the radar system that today is used on the current generation of Naval vessels. He spoke regularly at conferences and was granted a patent in his name. After he retired, he carried on working on radar to complete his PhD from Birmingham University.

Early in his career he met his wife to be, Herta. They married in 1960, and had three children, Catherine, Steve and Liz. They started married life in Waterlooville and Widley via San Diego California, before moving to Rowlands Castle in 1968.

Eugene gave a lot to Rowlands Castle. In 1972, a large housing development was proposed at the end of Wellsworth Lane and Uplands Road. Eugene was part of a group of people who successfully opposed the development. They then decided that Rowlands Castle needed a permanent organisation to protect its interests and the Rowlands Castle Association was born with Eugene as its founder Chairman. He also edited the village magazine for two long periods.

The RCA bonfire and fireworks draw people from miles around, but the early fireworks displays were a much smaller affair with Eugene and Frank Philpot literally lighting the blue touchpaper to let off fireworks in the Rec.

Eugene's involvement in the village didn't stop there. The RCA was offered a sum of money to put on an event for the children of the village so the RCA committee organised the first Rowlands Castle Village Fair.

Eugene was one of the group who negotiated with the Parish Council to set up the tennis courts in the recreation ground and the Rowlands Castle Tennis club was born with Eugene as its founder Secretary. He also had spells as a parish councillor and St Johns School governor.

Eugene was an active Liberal Democrat organiser and election agent for County Councillor Alan Drinkwater and District Councillor David Clegg. He was

deeply interested in politics; a big fan of Barack Obama; he even got a letter published in the New York Times, defending his beloved Guardian newspaper.

Eugene was a person who enjoyed life. He would sit in the garden with his family after a convivial meal and ask 'Aren't we lucky?' Loved by his friends, Eugene was both interesting and interested. He had long made the discovery that if you asked the right questions, everyone had something interesting to say. He was open and curious about life. Latterly he and Herta travelled widely, including India, China, Syria, Jordan, and Armenia. He will be missed by many in the Village who remember him fondly.

## **GOVERNMENT GRANTS** are available **TO SAVE YOU MONEY!**

Come and find out more about insulating your home, reducing your heating bills and living in greater comfort!

You can get:

- **25% cashback** for double glazing, insulation, solar panels and more
- **50% cashback** towards the cost of installing solid wall insulation

**100% cashback** if you receive certain benefits

**TUESDAY 1 DECEMBER 2015**

**3PM TO 7PM**

**SMALL PARISH HALL**

**LINKS LANE, ROWLANDS CASTLE**

Beatrice Hubert-Price of the Energy Team, East Hants District Council will be here to answer your questions and talk about the *Cosy East Hampshire* incentive scheme.

More info [www.easthants.gov.uk/cosy](http://www.easthants.gov.uk/cosy)

Local contact Gordon Charlesworth 02392 413865 [egcharlesworth@mypostoffice.co.uk](mailto:egcharlesworth@mypostoffice.co.uk)

Sponsored by Greening Rowlands Castle

Supported by the Rowlands Castle Association

## Local News

### Autumn and Winter in the Village

by Alan Eyers Vice-President RCA

I always know autumn is fast approaching when the Cricket Square has the posts and ropes in place and the grass has not been cut, and the Goal Posts and white lines appear on the Football Pitches. Autumn does have its pluses, despite the nights closing in, off to work & back in the dark, central heating kicking in at home, Christmas looming only weeks away. No doubt the TV will keep reminding us, 'only X shopping days left'.

Never mind, the pluses: leaves on the trees gradually changing colour prior to their fall. The best place, I always think, to see this at its best, is on the A3 up to Petersfield, either side of the road. There is a wide variation of reds, oranges, rusts in amongst the greens of the non-deciduous trees. It only lasts for a few weeks, but is well worth a trip up and down. Not perhaps on a 'New England' scale of Autumn display, but, things are always 'bigger' in the States, are they not? Similarly in Stanstead there is always a good display and kicking fallen leaves is not only a child's 'fun thing to do'!!

As some of you may know, the possibility of having a Village Museum is being looked into, with the unused part of the Railway Station a possible venue. The village has an interesting past, where is or was the 'Castle', always a topic of discussion, for instance, a question I am often asked by visiting friends or family. During the Second World War we know the Green was used as a 'parking lot' prior to the D-Day landings. Those of you who have seen the model railway depicting this can envisage what it may have been like.

There are several residents in the village who will have seen this first hand and surely have a few tales to tell? A contact of mine, a keen model railway enthusiast, tells me that this model in well known within his circles and much admired whenever it is put on display at shows and exhibitions.

By the time you read this the Firework & Bonfire night will have happened. Despite all the hard work that goes in prior and on the day, it is always rewarding to see how many turn out in all weathers to watch. Selstar's displays are always spectacular. I cannot remember if this will be my 16th or 17th bonfire that I have built, with lots of help, thank goodness! Thank you to all those who turn up on the morning to help with the build. I then set fire to it, watching all our hard work 'go up in smoke' as it were! Mixed emotions?

A small gripe: there are several of our fellow villagers who use four wheel electric motor scooters to move around the village, up and back to the shops and the recreation ground. One gentleman even uses his to walk his dog, he drives not the dog!! But I have noticed that on some occasions cars are parked half on & half off the pavement. These may well be visitors, but as not all our roads have pavements both sides, these cars do then present a risk to the Scooter drivers who have to drive on to the road to get by. Partially sighted walkers will also be affected, not expecting to come across a car in their way and may be forced to go via the road also. Can this please be avoided? Not checked, but, does this not contravene some Highways Bylaws or similar? Park likewise at your peril!



## U3A activities by Kevin Connell

The Rowlands Castle U3A has entered its second year with a wide range of activities. A full list of groups and a description can be found on the Rowlands Castle website. There are a healthy 120 members enjoying activities ranging from cycling and walking to Spanish and French language classes. More trips are planned such as trips to Sandhurst (tba) and a hosted visit to the Otter Gallery. There have been some wonderful talks on subjects such as the impact of illness (physical or mental) of world leaders on events in history and a thought provoking discussion of the critical turning points in WW2.

Talks and visits scheduled for the rest of the year are below. Other activities will be added through the year. Talks are held in the Parish Hall, on 3rd Monday of the month at 14.00. Non members are welcome, entry fee £2.00, Rowlands Castle U3A members free. Annual membership of the U3A is £20. The U3A is aimed at people who are no longer in full time work (meetings apart from wine tasting occur morning or afternoon.) New members are very welcome and we plan to run socials to greet new members and introduce them to the group co-ordinators, members of the committee and other new members. Everyone is very friendly and it is a great way to make new friends.

**November 16th Dr Bob France**

Turner at the House of Art, Petworth

**December 21st 2nd Anniversary and Christmas Party**

**Jan 18th Andrew Negus**

Portsmouth Harlots, Dung and Glory

**Feb 8th Visit to Otter Gallery**

**Feb 15th Bernard Allan**

Manet and Modern Paris

**Mar 21st Dr Tim Woodfine**

African Wildlife & Endangered Species



Local businesses are welcome to advertise in RCA Village Magazine. It's low cost and your advert will be seen by every household in Rowlands Castle, Finchdean and the surrounding area.

For more information contact

**Prue Amner Advertisement Manager**

RCA Village Magazine Email: [adverts@rowlandscastle.com](mailto:adverts@rowlandscastle.com)  
or phone Tel 023 9241 2459

## Village News

### Rowlands Castle Heritage Museum

by Alan Drinkwater Member of the RCA Museum Working Group

About a year ago, three of us met to consider the offer from Peter Goss to purchase his iconic model railway set in Rowlands Castle in 1944 at the time of the D-Day Landings. This led us to search for suitable premises in which to house the railway. The former Station Master's accommodation at the Railway Station became the preferred option, subject to a building survey and negotiation of a suitable lease at a peppercorn rent.

At the first public meeting the view was expressed that the Museum itself should become the primary focus, partly because of the asking price of the model railway, and the lack of a sufficiently large room to house it. A second more compact model railway has now been offered to the Working Group.

Since then, we have held further public meetings which attracted positive support, met with representatives of SW Trains, and made innumerable contacts with experts, funders, and councillors. Proposals for how the Museum will work and also for an organisation and management structure have been proposed. Costs are likely to be in the region of £10,000 but the search for donations and funding has yet to be fully developed.

**To make progress, we would welcome further support from other potential donors and volunteers, particularly for a treasurer and also a fund raiser.**

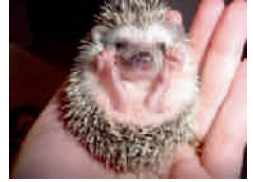
Once work on the station has been completed and a lease agreed, the management and supervisory team should be in place to open a bank account, and take up offers of funding. Further public meetings are planned.

Members of the Museum Working Group - Kevin Connell, Geoff Jacobs and myself - are grateful for the support, advice and offers of memorabilia from residents and are looking forward to more conversations and discussions. Should you wish for further information or wish to participate in any capacity, please contact me at home, by phone or email.



**Alan Drinkwater**  
21, The Peak      Tel: 02392-412066  
alan.drinkwater@btinternet.com

## Hedgehog Survey by Carolyn Couch



Dear Neighbour, I am carrying out a short survey and the results will be sent to The British Hedgehog society.

There is a short booklet, available at <http://www.britishhedgehogs.org.uk/leaflets/Hedgehog-Street-top-tips.pdf> which I hope you will find interesting. If you could answer the very short survey questions below and return to me at Kish Cottage, The Old Iron Foundry, Finchdean it would be appreciated. Alternatively email your answers to [couchc@btinternet.com](mailto:couchc@btinternet.com)

### Survey

Survey Question	<u>Your answer &amp; comments</u>
Do you see hedgehogs on a regular basis?	
How many on average do you see each night or each week?	
Have you seen any baby hedgehogs (hoglets) this year?	
Are you prepared to make your garden hedgehog friendly?	
Which village or street do you live in?	
Any other comments?	

One way of helping hedgehogs is to make space for hedgehogs to pass through i.e. a gap in a fence (hedgehog size) making more gardens accessible without the need for our local hedgehogs to cross the road.

Hedgehogs are gardeners' friends because they eat slugs and bugs. This means there is no need to use slug pellets and pesticides, which can make hedgehogs sick and removes their food source. Check lawns and hedges before using garden strimmers and lawnmowers. One of the reasons hedgehogs get killed easily is because they stay still and go into a ball rather than trying to get out of the way. If you have a pond use a log or stick as a ramp on the edge of the pond so hedgehogs can get out.

Thank you for taking part in the survey,

# Rowlands Castle Women's Institute

## The end of a very special year

by Jill Hewitt, President, Women's Institute

As autumn approaches RCWI can reflect on a tremendously exciting year of 100<sup>th</sup> birthday celebrations. Women around the country have marked the Centenary of the Women's Institute in a huge variety of different ways. Here in Rowlands Castle the highlight of our celebrations was a luncheon attended by most of our members on 15<sup>th</sup> September – the day before the actual day, 100 years ago, that the WI was formed. Elisabeth Hall and her committee organised a wonderful luncheon – the food and flower



arrangements were amazing and St John's Church Hall looked very festive. Our guest speaker was Lady Carnarvon, chatelaine of Highclere Castle where the enormously popular ITV series Downton Abbey is filmed. She spoke eloquently about the history of the Castle and many of the inhabitants and talked about the phenomenon that is 'Downton'.

Back in July we were treated to a talk by Gordon Furnell who is a guide working on Brownsea Island in Poole Harbour. This was followed by a rather damp trip by over 50 members to the Island on a rainy day in early October. Despite the inclement weather we thoroughly enjoyed ourselves walking across the island through the wonderful countryside and we spotted many of the red squirrels the island is famous for, some of whom were surprisingly tame.

We again enjoyed manning our stall at the Village Fair in July selling jam and cakes (a sell-out!) and entertaining the children (and some adults) with our Human Fruit Machine. At the end of September, the Staunton Group of WIs, which includes Rowlands Castle, were treated to a talk about the Edwardian Era by costumed speakers.





# Rowlands Castle Women's Institute

Members are pleased to be resuming our regular activities after the summer break including craft club, book club, reading group, drama group, science group, scrabble and skittles. In October we are looking forward to a cookery demonstration to show us all how to prepare 'Canapes for Christmas' and in November we have a Harvest Supper.



We always have an interesting speaker or demonstration after our monthly meetings which are held on the second Monday of each month (apart from August) and warmly invite prospective members to come along and find out what we do. If you would like further information please don't hesitate to contact me by email: [jillhewitt2@icloud.com](mailto:jillhewitt2@icloud.com) or by phone on 023 92 412941

## **WOMENS FELLOWSHIP IN ROWLANDS CASTLE**

**W**omens Fellowship continues to be enjoyed by its jolly group of local ladies who meet at St John's Church Centre on the 1<sup>st</sup> and 3<sup>rd</sup> Tuesday of the month between 2 and 4. Towards the end of our Summer Programme we enjoyed a visit to Uppark including tea and cake and on our last gathering had a lovely lunch at the Inn on the Beach at Hayling Island.

Our meetings provide companionship and lively chat around a mutually arranged programme involving Debate, Games, Talks and Demonstrations – including quite recently the fascinating world of calligraphy. We also hold Bring and Buys and Socials. Our backgrounds are interesting and diverse and we always seem to have so much to share with one another. If you are interested in coming along to our small friendly group please contact Claire Stanley.

Please note Claire is running the 1<sup>st</sup> Tuesday in the month meetings and other group members will take it in turns to run the 3<sup>rd</sup> Tuesday in the month meeting.

# Local Council News

## Autumn Report

by Clerk to the Council, Lisa Walker

As the clocks go back, our attention is focused on Fireworks & Bonfire Night, and the approach of winter heralding the festive season. However, the work of the Parish Council continues apace. Since July, RCPC has been up to its full complement of 9 members, having co-opted Rowlands Castle residents - Stuart Chaston and Chris Stanley - to fill the 2 vacancies remaining after the elections in May this year. We welcome them both to the team and hope to make good use of their knowledge and skills.

### Provision of defibrillators in the Parish

Thanks to generous donations from the Village Fair Committee, the RCA, RC Good Neighbours and Parish residents, we have already succeeded in our aim to provide at least 2 defibrillators within the Parish, at a cost of £1400 each. We are grateful to both Rowlands Home Hardware and The Parish Hall for agreeing the devices could be installed on the external walls of their properties, and for absorbing the costs of the power needed to keep them in 'tip top' condition.

In addition, a Community Grant from D Cllr Johnson, and the generosity of the friends and families of the late Eugene Billam and John Bussell, will allow us to purchase and install at least another one, and possibly two, devices around the Parish – so watch this space!

The defibrillators are accessible anytime by phoning 999 and requesting the PIN code to unlock the cabinet. They are highly visible and designed for the 'lay' person to use. South Central Ambulance Service will be holding Awareness Training on 9 November in St Johns Church Hall to teach people how to operate them. When someone is in cardiac arrest, it is vital these devices are deployed in conjunction with Cardiopulmonary Resuscitation, or CPR for short. We will soon be contacting all those who signed up to be such community first responders, and if you wish your name to be added to the list just let the Parish Office know as soon as possible.

Every year over 30,000 people suffer an out-of-hospital cardiac arrest and the chances of survival are greatly reduced without CPR. Recently, on Radio 4's Today programme, the British Heart Foundation urged people not to worry about any potential harm they might do to someone in cardiac arrest by conducting CPR; their life is already on the line so nothing you do is going to make it any worse and you might just save a life.

### Planning

Towards the end of October, the formal Examination of EHDC's draft Allocations Plan (which constitutes Part 2 of the Local Plan and specifies where new development will go) will take place. At the time of writing, Rowlands Castle is the only Parish Council to request formal representation at the Examination Hearings. During the 'round table' discussions, RCPC's representatives will be keen to persuade the Inspector of the importance of protecting the green spaces around the Parish, and between the village and neighbouring villages/towns.

At the same time, RCPC will also be submitting its response to SDNPA's Local Plan: Preferred Options Consultation which will set out the plans for the Park for the next

# Local Council News

15 years or so in terms of planning policy, living landscape and growth for new development. RCPC is keen to make the most of the Parish's status as a 'gateway' to the Park, whilst ensuring the Park's viability is secured for future generations.

Cllr Wilson represents RCPC on the Land East of Horndean Development Panel which aims to make comprehensive recommendations regarding the provision of community facilities on the proposed site. His extensive research has already contributed to the prioritisation of funds for work to the mini-roundabout system at the top of Redhill Road, and it is hoped a comprehensive traffic study of the whole of area, including Manor Lodge Road etc, will be conducted to ensure any further funds are spent as wisely as possible.

As regards 'Oaklands II', the sharp eyes of a councillor spotted a reduction in developers' educational contributions as a result of an administrative error; luckily this has since been rectified. RCPC was also concerned by the considerable reduction in transport developers' contributions for the same development, but understands HCC has sanctioned this reduction because it has already budgeted to do some of the planned work itself. RCPC has voiced its concerns, to its local county and district councillors, that insufficient attention is given to such contributions, both in the seeking and spending of them, to the potential detriment of the parishes concerned.

## **Traffic Review**

Some of you may have already volunteered to take part in the planned Traffic Review for the Parish. This is a PC-led initiative to be organised by the Council's Traffic Working Group, and will take place over the next 3 to 4 months. It will involve a holistic approach to identifying traffic issues and hotspots, both existing and forecast, throughout the Parish. It is hoped the results will have weight with local authorities, and, when complete, will be submitted to the local MP, county and district councillors. In response to a Grapevine message, some 10 residents have already kindly agreed to assist the Group in this task, and we would happily welcome more volunteers, together with any specific comments from other residents.

## **Rec Ground Play Area**

Guided by the results of a survey earlier in the year, the Council, as part of a joint project with the Village Fair Committee, purchased a new basket swing which has now been installed. We will shortly be cleaning and re-painting much of the original equipment and re-laying the rubber safety matting under many of the pieces. Longer term, if funding allows, we aim to install an inclusive roundabout which will be level with the ground to enable less physically-able children to access and play on it more easily.

## **Charitable Trust Matters**

Both charities for which the Council is sole trustee - the Parish Hall and the Recreation Ground - have now been granted Charitable Incorporated Organisation status. This has allowed the Charities' Constitutions to be updated in line with more modern arrangements, and has also clarified the status and responsibilities of all those involved.

# Local Council News

As with the Parish Hall, day-to-day management of the Recreation Ground is being taken over by a newly-formed Management Committee, under the Chairmanship of Cllr Symond, which will report to the Council on a regular basis. The Committee includes not only parish councillors but also representatives of the different sports which use the Rec along with other users. In the near future, the Committee will be considering the refurbishment of the original interior of the Pavilion and the improvement of the pitch surfaces, amongst other matters.

In the near future, RCPC will be working to form a Group to draft a Community Emergency Plan for the Parish, drawing on the experience of the highly effective RC Flood Action Group. It will also be pursuing its contacts with Portsmouth City Council in relation to the future of land owned by Portsmouth in this Parish.

RCPC has noted with interest the proposals for Hampshire to become a 'combined authority', though concern has been expressed that any devolving of responsibilities from central to local Government should not result in more bureaucracy.

Finally, our thanks to Rowlands Home Hardware and the Village Fair Committee for working together to provide what promises to be a splendiferous, coniferous (!) Christmas Tree this year to adorn the village Green. On that note, even though it may be a little early, may we wish you all a very Merry Christmas and Happy New Year.

Highways (roads/pavements, flooding/drains, street lighting, overgrown vegetation etc)

HCC Contact Centre: 0300 555 1388

Report on-line at: [www.hants.gov.uk/roadproblems](http://www.hants.gov.uk/roadproblems)

Rights of Way (footpaths, bridleways, pavement etc)

HCC Contact Centre: 0300 555 1391

Report on-line at: [www.hants.gov.uk/rh/row/problem-report.html](http://www.hants.gov.uk/rh/row/problem-report.html)

East Hampshire District Council (waste collection, planning matters, environment)

Main Switchboard: 01730 266551

Website Home Page: [www.easthants.gov.uk](http://www.easthants.gov.uk)



## Autumn Report by Malcolm Johnson

As I write my second report for the RCA magazine I realise that I've now been the Rowlands Castle district councillor for six months – how the time flies when you're busy. And the summer months certainly have been just that at EHDC. With continuing training for us new members alongside serious debates on the subject of English devolution which have culminated in the council agreeing to become part of an Isle of Wight and Hampshire bid for a new Combined Authority, we have certainly been fully occupied on behalf of our residents.

The Combined Authority idea would see fifteen separate local authorities in the area coming together to form one enlarged authority with a considerably enlarged remit than is currently handled by for example Hampshire County Council and East Hampshire District Council.

Papers were submitted to the government in late September so we await a final decision by ministers, probably in the New Year.

As I reported in the summer edition I along with other district councillors and a representative of the Parish Council have been working to establish a positive outcome for the communities of Rowlands Castle and Horndean from the developers of the Hazleton and Pyle farm site. This has entailed much detailed work on what's called the S106 Agreement that sets out what financial contributions the various developers of this large site must provide for the local communities. It is fair to say that significant funds will be made available to the two parishes to mitigate many of the impacts that this development will have on the area. On a less satisfactory note I have to report that there is yet another delay in the provision of off road parking for the residents of Links Close. As I previously reported tender documents to undertake the work were received back in the summer but sadly they all came in at least 50% over the allocated budget. The specification for the work is now being reviewed in an attempt to try to get the project back within the budget. More in due course. At Comley Hill the Planning Failure to Comply notice issued to the owner of the plot that contains a number of caravans is due to expire by the end of October. Planning Enforcement officers will then be taking the next steps to resolve this continuing problem.

On a more positive note I can report that EHDC has decided to extend its Cosy East Hampshire scheme through to the end of March 2016 rather than close it in August as originally planned. This scheme, which financially supports residents installing energy-saving home improvements, is available for both rented and owned properties. For details there is a contact form on the council web site or alternatively call 01730 234 317 for more information. As a local district councillor I also have funds available for local community purposes and so far this year I'm pleased to have been able to assist the parish council with their defibrillator scheme as well as providing funds to the Neighbourhood Watch team. Please get in touch if you're involved in a local community activity and are seeking financial support for a particular project, you never know what can be done until you ask.

Finally, a subject close to the hearts of many in Rowlands Castle – speeding on village roads.

# District Council News

This is probably the one topic that generates most correspondence. I know that the parish council has plans in hand for measures that will hopefully make an impact but there is one way that all residents can help and that is by giving a little spare time to the noble efforts of the local Speed Watch group. By volunteering to help the group generate local data on traffic speeds and therefore demonstrate that there is an urgent need for action, the village is then in a stronger position to go to the police who can then initiate a more focused response.

Please remember that on the first Thursday of each month along with our Hampshire County Councillor Marge Harvey, I can be found in the village café between 1100 and 1200 so if you have something you wish to raise we will be there. I can also be contacted at EHDC via email: [malcolm.johnson@easthants.gov.uk](mailto:malcolm.johnson@easthants.gov.uk) or by phone 92412096.

## Hampshire County Council report by Marge Harvey.

Again I can't believe that Christmas is just around the corner! These past few months have gone by with amazing speed. It's probably because, as usual, I have been very busy personally and at HCC.

Although I haven't been able to attend all meetings, I have been kept up to date with everything and when the meetings of the committees I'm on have very important issues that concern the residents of my division, I have made sure that I attend.

As you may remember, I was on a working group looking into the saving of £1.8 million on short breaks for disabled children. We made a few recommendations to the cabinet, including not making the savings in the next financial year, but to give a year for the organisations to try and fill the hole. It has now been confirmed that the savings will not now be taken from short breaks, but will have to be saved elsewhere.

I'm sure that you will all agree that this vital service to disabled children and their families should be kept the same.

I have also been working with the officer to try and get some of the parking problems sorted out and in November there will be a review which will be done by Havant Parking Enforcement, on behalf of HCC. They have already done a very comprehensive review of the other part of my division and in November they will start a review of parking in Rowlands Castle, so if you have anything that you would like me to include, then please let me know.

Also in November, as County Councillors, we all get together to vote on the schemes throughout Hampshire that we would like included in the 16/17 budget. I will be putting the traffic calming schemes forward for my division which will include Bowes Hill.

I do realise that there are other schemes that need traffic calming in in the village, but I am only allowed to put forward two schemes and one of them needs to be in Horndean, but I have offered to pay for speed limit reminders for some time now and I hope that the Parish Council will take up my offer, as I do believe that they make a difference. I know that it has been mooted that if you leave them in one place for a period of time that motorists do not take any notice of them. I don't agree with that because I think that they remind motorists to slow down, which is what we are trying to achieve.

# Hampshire County Council News

The police don't have the resources anymore to enforce this sort of thing, so we really do have to try and do what we can to tackle it.

I have contacted the police about the large lorries that have been going into Whichers Gate Road without stopping to deliver anything, which is against the signage shown. Hopefully they will at least try to do something about this.

I have already asked for a weight and width limit on Castle Road and Woodberry Lane and that is going to be advertised very soon which is what has to happen as public consultation.

Money is already in the agreement with developers for work to be done on the double roundabout and this was done because I asked for an audit on the roundabout after the planning application for Land East of Horndean as I didn't agree with the assessment done by the officer and said so at the planning meeting. They have also agreed to look into all planning applications that impact on this roundabout and other parts of the village.

I think that the Parish Council would like to see a 20mph limit put on the village and I have already asked about this and have been informed that even if we get it, will not be enforced by the police as it is self enforcing as in Portsmouth and Winchester.

Hopefully there will be a review of pavements throughout the village as many of you have contacted me about them and I have asked the officer to come and walk them with me, so that we have evidence of the condition.

The pavements have been done for a few years now in Uplands Road and The Peak and Links Lane and they all look so much better and the most important thing is that they are now safer. It does take some time to get this done, but better to get it on the radar now than when they have broken down very badly. Prevention is better than cure, I believe!! Please remember to contact me about anything to do with roads, pavements or anything that you're worried about and I will try to help and if I can't, then I probably know someone who can!!

With only weeks to go until Christmas, I would like to wish you all a very happy and healthy Christmas and New Year and hope that in our case, next year will be better.  
Marge

# Rowlands Castle Good Neighbours



## 25 Years of Good Neighbours

by Ian Hewitt

On Thursday, 14th May we marked 25 years of Good Neighbours in the village with the AGM followed by a celebration cream tea.

A packed Church on the Green welcomed representatives of the Parish Council, RCA, churches and other local GN groups, as well as volunteers and clients past and present.

Amazingly, 8 of the volunteers who started in 1990 are still volunteering: Barbara Brown, Joan Drinkwater, Lyn Elliott, Jill Hewitt, Sheila Johnson, Liv Johnston, Jane Pickering and Daphne Youngs. All except Daphne were present to receive certificates for their service from Elizabeth Foulds, the county GN Support Services manager.

They had been put up for a Group Award held just 3 weeks previously in Winchester where Daphne Youngs and Jill Hewitt accepted the awards on behalf of the gang of 8 – curiously enough the same event at which the Finchdean Flood Action Group of Steve Protheroe, Alex Finch and Andy Lee received their Group Award.

We were delighted that Cheryl Adams, the Health Visitor and Joyce Perry the Good Neighbours Support Service manager when the group was formed could join us. Unfortunately Mandy Monahan, the lead volunteer at the start, could not attend.

Certificates of Service for 5 years or more were also presented to Margaret Churchley, Gillian Lovegrove, Colin Morgans, Gillian Morgans, Judy Notley and Judith Symonds.

During the Chairman's address, Ian Hewitt paid tribute to the late Bob Johnson, who had attended the previous AGM but died just a few days later. Bob, like Sheila, had been one of the original team, was treasurer for many years and the group's technical expert who, among other things, set up the phone systems on which the organisation depends. He had been very much a lynch pin throughout most of GN's life in the village.

In just the past few weeks, two regular clients had commented, 'Good Neighbours. We just couldn't do without it.' and 'Without Good Neighbours, I really don't know what I would do.' It was encouraging that the work of the volunteers is so much appreciated.

There are about 50 clients and 40 volunteers at the moment. 4 clients are new in the last few weeks. There are 2 expressions of interest in volunteering, although one is 'on hold' and one previous volunteer will, hopefully, start again soon on return to full health but we are always looking for more volunteers to drive our clients to hospitals, social events and shopping trips.

# Rowlands Castle Good Neighbours

And finally – if you know of anyone who may need help - for example, with:  
Transport to hospital, library, or shopping?  
Collecting a prescription from the doctors?  
Transport to a club or social activity?  
Some company for a chat ?  
Any other neighbourly activity?  
then please remind them of our help line - 0845 519 6641  
and ask them to give at least 48 hours notice (if possible) of their need .



*Photos by David and Valerie Mitchell*

# Girl Guiding

## Summer with the Rowlands Castle Girl Guides by Jenny Dickin

Over the summer, the Rainbows have been busy growing, cooking and eating their own fruit and vegetables, learning how to purify water and trying sports such as circuit training, dance and archery. They also tried tracking in Havant thicket and making seed tray gardens.

The Brownies have completed their Disability Awareness badge which included a special visit from Alan Parton to talk about the work done by the charity: Hounds for Heroes. They have now started to work towards their Crime Prevention badge.

The Guides have had 3 girls working towards their Baden Powell Award, the highest award they can achieve as Guides. One of the clauses they chose to complete is to run an International evening. This have included foreign games, food, music and even Bollywood dancing which were enjoyed by everyone.

At the end of last term, the Guides, Brownies and Rainbows all joined together at Queen Elizabeth Country Park for a BBQ and some games.

Through the summer holidays, the Brownies went on Pack holiday where they worked on World Cultures and Designer badges and all had a great time. Several of the Guides also attended a large weekend event at Foxlease called 'Wellies and Wristbands', a festival style event with adventurous activities such as rock climbing and canoeing alongside live music that included Bars and Melody, Only The Young and other artists both local and well known nationally.

Through the autumn term, the Rainbows will be learning about dyes, Poi and international music. The Brownies will continue working towards their Crime Prevention badge whilst the Guides plan to start working towards the Senior Section Centenary challenge – put together by the Senior Section to mark their centenary, Guides will get to choose between a wide range of activities over a number of different themes and try some new skills.





## What time is it please, Mr Hedgehog? by Gordon Charlesworth, Chair

**H**i, this is my first article as the newly appointed chair of the Gardening Club, taking over from Elisabeth Hall who has led so enthusiastically for the last four years. We have a full programme of speakers and visits lined up for the year ahead, so why not join us on the 3rd Wednesday in the month at the Church on the Green?

We can almost set our watches by the hedgehog which visits our garden each night! (At least we think it's the same one!)

Our October meeting should have given us lots of insights into the wildlife which visits or inhabits our gardens, and what we can do to encourage it.

But here in The Drift we are already ahead of the game, as our personal hedgehog has been popping in each night now for some weeks. She or he is eating up in preparation for hibernation, and regularly eats a bowl of cat food or crushed unsalted peanuts each night. We have made a safe dining room out of a cheap plastic storage box with a hole in one end and a brick on the lid to keep out cats and foxes; directions are easy to find on the web, or you can buy custom-made wooden "feeding stations".

Apart from being an endangered species hedgehogs help gardeners by eating some of the pests which plague us, including slugs, caterpillars and insects. And if you want to know the time ask a hedgehog- as long as it's 8-15pm!



# Neighbourhood Watch

## Update

by Steve Protheroe NHW co-ordinator for village

You may recall that in April this year that Rowlands Castle along with Clanfield and Horndean were policed by staff based at Petersfield. Previously the team came from Waterlooville and before that Havant.

Due to these changes it made sense for our NHW Group for the village to move from being part of Havant NHW to the Winchester and East Hants NHW (WEHNHW).

This move was smoothly made at the end of March 2015. Effectively all our data base of information, whereby the village is split into designated colour zones with street coordinators and sector coordinators and the village coordinator (myself) was transferred to the computer data base held by our President Margaret Filley based at Winchester.

Don't worry all this confidential information is securely held in the new system.

So, What's changed? You ask.

Well the way information is cascaded out by our local police in the main. Under Havant NHW the Waterlooville police team sent out sanitised recorded police data to me on a regular basis. This information was then sent on out via email to all NHW members.

Now each NHW Member MUST register with HANTS ALERTS to receive such information. If you Google that heading the website tells you how to register. The more information you supply the more local will be the information you receive by email or text, whichever you request.

Can I also say that we as a village are now more proactively looked after by the very positive team on WEHNHW.

For my sins I'm now the treasurer of the group, which is not an onerous task I'm pleased to say.

The AGM held in August was the most high powered and interesting meeting I have ever attended in my 14 years working with NHW. We had both District Commanders as well as the Assistant Chief Constable for Hants attend ( All ladies) and our Police Crime Commissioner. Do make time to come to next years event.

# Neighbourhood Policing

## Friends of dementia by Almera Toogood

I am a Police community support officer Almy Toogood 13326 and part of my beat covers the Rowlands Castle area. I would like to take this opportunity to tell you about a recent information session that I attended. This training was on Dementia and how to become a Dementia Friend. I now have a better understanding of what it means to the individual and within my role I feel that I will be more effective in assisting these members of our community.

The Alzheimer's Society's Dementia Friends programme is the biggest ever initiative to change peoples perceptions of dementia. It aims to transform the way we think, act and talk about dementia

Please spare the time and visit the Dementia Friends website to look at the information sessions and video. [http://www.alzheimers.org.uk/site/scripts/documents\\_info.php?documentID=2162&pageNumber=6](http://www.alzheimers.org.uk/site/scripts/documents_info.php?documentID=2162&pageNumber=6)

If you have any concerns about anyone in our community then please contact me on 101 or email [almera.toogood@hamsphire.pnn.police.uk](mailto:almera.toogood@hamsphire.pnn.police.uk) Remember to look at Hampshire constabulary website to register free with Hampshire Alert to obtain up to date information relevant to you and your area.

Immobilise is another website where you can register any property with a serial number onto a national database which would make it easier for us to identify the owner of any property found.

### THE ROWANS HOSPICE

I would like to thank the residents of Rowlands Castle for the support they have given to The Rowans Hospice over the past years.

The Rowans Hospice has been open for 20 years now and the fundraising has been helped by 12 support groups across the area running various activities to help with the costs.

Your local support group "The Havant & Rowlands Castle Support Group" are holding the following events in 2016 and your continuing support would be much appreciated.

March 17th – Spring Luncheon at Rowlands Castle Golf Club

May 26th – Quiz Night at Rowlands Castle Golf Club

October 6th – Golf Day at Corhampton Golf Club

November 25th – Skittles Evening at Southwick Park Golf Club.

Diana Cose

Email: [dianacose10@gmail.com](mailto:dianacose10@gmail.com)



## Summer 2015

by Kay Pennicotte-Henrie Head Teacher

The summer residentials were a huge success this year. We were lucky to have fine weather at Stubbington for year five and at Fairthorne Manor for year six. Even our camping evening was warm and dry.

At Stubbington the children experienced beach activities and tried to make waterproof dens! They had four nights away from home and came back with fun tales and plenty of washing.



For some children this is the first time they have spent time away from family and they built strong friendships.

At Fairthorne Manor the children experienced zip wires, abseiling and sailing activities. They camped and enjoy being in the fresh air all week.

The year four camping evening was a great end to our summer term. We had a campfire and were ready for an early breakfast before heading off for the

summer break. These activities enhance all the usual opportunities that we offer here at St. Johns.

If any villagers would like to help out in school we would love to hear from you. Please call the school office on 02392 412095.



## Christmas fair by Sue Arnold (chair)

We would like to thank everyone for their support over the past year and are extremely fortunate in Rowlands Castle to have such generous and supportive families for this worthwhile charity. So far in 2015, we have had a couple of great fundraising events, the first being our Barn Dance in March. This was very well attended and we raised an amazing £1420.00. At the start of the year, we were also happy to hear that Rowlands Castle NSPCC was rated second next to Hambleton in the fundraising table for our area, a significant achievement. Each year we have a stall at the Village Fair and this year we sold cakes and, once again, held the popular jam jar tombola. These two stalls together raised £380.00.

On the 28th November, we will be holding our annual Christmas Fair in the Parish Hall from 11am to 2pm. Please note that it is a week earlier than usual this year. There will be various stalls, activities for the children, a visit from Father Christmas as well as refreshments and Christmas entertainment.

Another date for your diary is Saturday 12th March, when we will be holding a Bangers, Beans and Bingo evening! There will be more details on this event later but keep the 12th free for a fun evening!

We are always looking for new members and/or help at events. If you are interested, please contact us.

Thank you once again for your support

Sue Arnold. Chairperson. (sueandjona@aol.com)





# Photography

## Rowlands Castle Photographic Group

by Ann Page

During the summer and early autumn the photographic group has been out and about taking photographs in the village and listened to some inspirational talks from some very talented photographers.

Our guest speakers enthralled us with images taken far and wide, from the USA to Switzerland. They not only entertained us with their wonderful photographs but also gave us an insight into how they took the images and what settings they used on their cameras.

We all came away inspired and with a wealth of information.

We also talked about entering the village fair photographic competition which was on the 4th July. The number of subsequent entries far exceeded expectation and this year the standard was very high. Congratulations to everyone who was placed and a big thank you to all that entered for supporting the show. Below is a photograph by Linda Donaldson who was the overall winner this year.

During August the members were invited to view all the images that had been submitted for the Rowlands Castle 2016 Calendar, after much deliberation a shortlist was formed and





# Photography

in our September meeting after a wonderful talk by Frances Fawcett ARPS on taking photographs in the snow, the members were asked to vote on which shots would be included in this years calendar.

We are pleased to say it is a fabulous calendar this year, with superb images of the village. We have reduced the weight of the calendar for people that send it abroad and it also now comes with an envelope for posting.

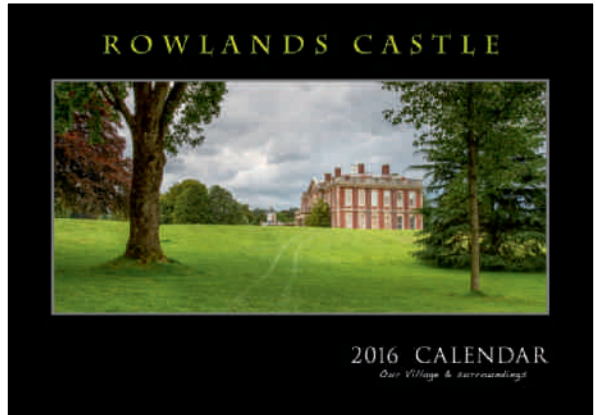
It is on sale in your local village shops or by contacting Pat Carter (patcarter123@hotmail.co.uk).

Dates for your diary

October 15 Kelvin Schafli - who will be taking us behind the scenes at the Chinese opera.

November 19 Iain McGowan FRPS – Photographer, author and photographic workshop organiser who regularly works outside the conventional photographic styles.

So check the website <http://www.rowlandscastle.com/CulturalSocialDir/photography.htm> or check out our Facebook page for more information. We look forward to welcoming you to our meetings.



# Domestic Heating Advice

## Latest Energy News

by Nic Radcliffe

By the time you're reading this, we've probably all got the heating on for winter so it seems a good time to look at how some people are lowering their heating bills.

But first an update on my last article. I wrote last time about some designer radiators that I fitted at home and at my parents'. Well there has been lots of interest with customers seeing that they can smarten the look of a room simply with new radiators and a lick of paint. The vertical ones have been especially popular as you can free up wall space for furniture. I have had a couple of instances where radiators have been behind sofas. They warm the back of the sofa very nicely but not the room so much. Just by putting a vertical radiator at the side of the sofa it has not only made the room much warmer but also created a focal point. Another place they come in very handy is the kitchen as most kitchens have limited wall areas anyway. It's a good way of getting much more heat output from a small area, and with the colours and styles available there is one for any kitchen.



On the energy front, I've written previously about Voltz, the app that can quickly help you identify a lower cost energy provider and switch you to them. Now there is something new happening, not in the village yet but hopefully it may come some time soon. In some parts of the country, local authorities are taking on the big six energy suppliers by offering gas and electricity direct to the public for the first time since the 1940s. Cheshire, Southend and Peterborough are some of the ones leading the way. Early evidence is that families switching to their local supplier are saving on average £250 on their bills. The people who gain most from switching are those currently on the big six companies' standard tariffs.

So if there are any readers with some influence with our local authority, please give them a nudge in the right direction and help us get our energy bills down.

## DREWS FARM

Drews Farm is situated between Rowlands Castle and Forestside. We have reintroduced livestock onto approximately 20% of the farm. Dexter cows and a mixture of Welsh Black Mountain and Easy Care Wiltshire sheep graze on some of the best low lying chalk pastures of the South Downs National Park. They are not fed on any supplements, additives or prophylactic antibiotics to encourage quicker growth and weight gain.

Approximately every 3-4 months we sell mixed boxes of Beef and Lamb/Hogget.

We try to produce the best tasting, healthiest beef and lamb without compromise for our family and you.

The beef is hung for 28 days to achieve a superior taste and is vacuum packed for optimum freshness. The boxes are 7-10kg of mixed cuts.

To reserve your box or to put your name on the mailing list please email : [annafawcett@mac.com](mailto:annafawcett@mac.com) Or call : 07775641638

Visit our website for further information: [www.drewsfarm.org](http://www.drewsfarm.org)



Delivery is free to areas within 5 miles of Rowlands Castle.



## For all your fencing needs

**Suppliers & Erectors of Every Type of Fencing Including:**  
Chainlink • Palisade (wood or metal) • Panels  
Closeboard • Weldmesh • Posts (concrete or wood)  
Security Fencing • Trellis • Gates



We also offer a friendly reliable and competent skip delivery service to all local areas. Our skip sizes are mini, midi and maxi and we also provide a Grab service.



**TRADE  
AND  
PUBLIC  
WELCOME**

Visit our website for any fencing prices or call 023 9241 2768  
[www.caroway.co.uk](http://www.caroway.co.uk)

Caroway, Station Yard, Bowes Hill, Rowlands Castle, Hants PO9 6BP

# Craffy Fayre

## Rowlands Castle Craft Fayres by Hilda Tart

The Craft Fayres are held on the 1st Saturday in the month from 10am to 1pm in both halls at the Parish Hall, Links lane, Rowlands Castle PO9 6AD.

The next two Craft Fayres will be on Saturday 7th November and Saturday 5th December.

Admission is free and refreshments can be purchased.

There will be approx. 24 stalls with craft items hand-made

by local people including Art-work, Bead-work, Cards, Glass-work, Jewellery, Knitting, Patch-work, Photography, Quilting, Textiles and Woodwork.



These fayres are a good opportunity to buy unique Christmas gifts at affordable prices.

You may also be inspired to take up a new hobby. All stall-holders are happy to answer questions about their craft.

We continue to have a steady stream of enquiries from potential stall-holders and several have joined us over the last few months.

If you would like to be considered for a stall please contact: [rowlandscastlecraftfayre@gmail.com](mailto:rowlandscastlecraftfayre@gmail.com)

# *Sparkle Domestic Cleaning*

Local, Family Run Business

Est. 2002

- **Weekly, fortnightly or Monthly Cleans**
- **Ironing Service with free collection & delivery**
- **Fully Trained, Uniformed & Insured Staff**
- **Reliable Service with Attention to Detail**

[www.sparklehomeclean.co.uk](http://www.sparklehomeclean.co.uk)

TEL: 023 9246 9633 OR 07973 953337

Email [claire.sparkle@btinternet.com](mailto:claire.sparkle@btinternet.com)

## **Rowlands Castle Historical Society**

The society now has a permanent display cabinet for small items. It is in the small Parish Hall alongside other items of our village's past. If you have any artefacts that you would like to donate, either temporarily or permanently, please contact us.

Thank You

Paul Marshman RC 412028

Barbara Openshaw RC 412400

## **We want to hear from you.**



Do you have something to say? The RCA Village Magazine belongs to the whole village and serves as a channel of communication between villagers. If you have a point of view, write a letter and we'll publish it.

Simply write to Editor, RCA Village Magazine, 19 Mallard Road, Rowlands Castle, Hampshire PO9 6HN. Email to

[editor@rowlandscastle.com](mailto:editor@rowlandscastle.com)

# Tennis Club

## Successful Summer

by Alan Best secretary

Another successful summer season for the tennis club was capped in style when, for the second season in succession we were voted as the winners of the Portsmouth LTA's prestigious "Colin Manvell Award for Sportsmanship", beating 18 other clubs in the area. Presenting the trophy to Jane Whitaker, Mixed team captain and Alan Best, Men's team captain, league secretary Michael Isaacs said that "it is always a pleasure to play against any team from Rowlands as they always play with a smile on their face and they always go out their way to make sure that the opposition have a good day."

The club's own presentation evening was held the following evening, with the main awards going to Ed Wren, Men's Singles champion and Michele Harpur, Ladies' Singles champion. Neil Meaghan and Matt Bennett regained their Men's Doubles title and Sue Palmer teamed up with Alice Wilkinson to lift the Ladies' Doubles crown. But perhaps the best win of the summer tournament was Katie and Andy Rowley's win over talented teenagers Alice Wilkinson and Matt Lee in the Mixed Doubles event.

Other winners in the age group events, where partners are drawn out of a hat, rather than chosen, went to Gill Clarke and Lynda Pine, Phil Tusler and Rob Thompson, Jane Noble and Brian Harpur, Jane Whitaker and Andrew Callender and finally Andrew Callender (again!) this time with Roger Fearn.

The final trophy, for the Most Improved Player of the Year, went to a very surprised new member, Lynne Foster!

Another cause for celebration came with the re-opening of the courts after a much needed resurfacing. Having been laid down in 2001, with a predicted life span of ten to twelve years, the courts had done well to survive as long as they had. However the ravages of the last couple of winters had meant that resurfacing could not be put off any longer and so the contractors moved in.

With the weather being very kind to us the job was done in less time than expected and the newly laid courts are now back in action and playing



# Tennis Club

extremely well. They will remain unpainted over the winter, to allow the tarmac to “cure” fully. They will be painted in the spring, though the colour has still to be chosen – how about Wimbledon colours, purple and green?

For those village residents who don't know much about the club, we are a very friendly bunch with members from around 130 households – mainly in Rowlands - with playing members ranging in age from 4 to 84 (and a bit beyond!). Memberships start at £7.50 for under 10s, through £45 for sole adults and a remarkably cheap £81 for the whole family. New members are always welcome, although as we do not have any floodlights winter club activities are quite limited. But if you would like to dust off your racquet skills, or start from scratch, then please get in contact with us and we will point you in the right direction.

Membership Secretary: Michele Harpur 023 9241 3566  
membership@rctc.co.uk

Club Secretary: Alan Best 01243 389443 sec@rctc.co.uk

Web Site www.rctc.co.uk

## Rowlands Castle RVS Lunch Club

The lunch club has been in existence for 33yrs now. It provides a freshly cooked nutritious meal and is a focal point to meet together and socialise. If you wonder what to eat and hate washing up treat yourself. Make new friends, enjoy some different meals.

Or could you make a difference? Yes with a little of your time you can do just that. Be a volunteer for the lunch club. We need help with preparing the meals, no special skills are required, just a willingness to join the Happy Working Group, all instructions will be given. Contact: Vi Anthony 02392412524

Or are you a driver who could join our rota to bring and return the less able members to the club?

REWARD Making a difference to another's well being, meeting new people, making new friends.

If you are interested in coming to the club or able to volunteer or would like more information please contact Mary Williams on 02392412763



Have  
you seen

the **NEW** signs?

Actively selling and letting in your area

14 The Green, Rowlands Castle, Hampshire PO9 6BN

023 9241 0014 sales@hpd-estates.co.uk lettings@hpd-estates.co.uk

PORTSMOUTH HIGH SCHOOL

# Open Morning

Saturday 3 October

9.00 to 12.30

Ranked 'excellent' in all  
categories of Independent  
Schools Inspectorate  
Report June 2015

---

School minibuses pick pupils  
up daily from Rowlands Castle

An independent  
school for girls from  
Nursery to Sixth  
Form delivering  
outstanding  
results...

[www.portsmouthhigh.co.uk](http://www.portsmouthhigh.co.uk)



Portsmouth  
High School

023 9282 6714 • [admissions@por.gdst.net](mailto:admissions@por.gdst.net)

Kent Road, Southsea, PO5 3EQ

Part of the Girls' Day School Trust network of schools



# DACD (Rowlands Castle) Cricket Club

## End of Season Report.

by Jonathan Law

This year's tour saw a welcome return to Somerset basing ourselves in Taunton with games arranged against Klive and Axminster. The Friday evening T20 game was a bit one sided (always a possibility when touring against new teams) and DACD were never in with a realistic chance of chasing 163 finishing on 100-3 and were well beaten. Unfortunately Sunday's game against Axminster was cancelled resulting in an



unexpected trip to the seaside at Lyme Regis. Back on home territory our inconsistent season continued with another heavy loss to Clanfield.

July pretty much summed up our season. 3 good midweek wins were offset by more heavy Sunday defeats. One high spot in our Sunday travails was a new fixture at Coombe Bisset, a lovely setting just the other side of Salisbury. After slipping to 49-6 we eventually posted a half decent 159-9 thanks to half centuries from Colin Lord and Mike Whyatt. A couple of wickets gave us some hope but Coombe Bisset reached their target in the 30<sup>th</sup> over.

One high point was the annual East Meon 6s tournament. Played on a lovely sunny day, DACD Pirates were drawn in a group with East Meon (again), Park Farm Rangers and Buriton. Two excellent wins saw us through to the 3<sup>rd</sup>/4<sup>th</sup> play-off where we kept up our earlier momentum and won our final game against Rogate to finish with bronze medals. Thanks to our guests Toby and Mark from Clanfield CC and special mention to Alex Andrews who won



Champagne Moment of the Tournament for his monstrous six (out of the ground) off the last ball to win our group game against Park Farm Rangers.

# DACD (Rowlands Castle) Cricket Club

More Sunday defeats followed by an unseasonal damp end to August threatened to see our season peter out but we ended on a (relative) high against Lavant.

A timed game played in glorious early autumn sun saw DACD bat first. The batting highlight came from Dinesh (batting at no 7 due to a delayed arrival). Despite batting with a piece of balsa wood he eschewed running between the wickets to reach 56 no (50 coming in boundaries). Instructions to



the tail to give Dinesh the strike and bat sensibly resulted in DACD being bowled out for 122 off 38 overs with 30 minutes remaining on the clock!!! DACD dug deep with their bowling and fielding performance and when the final ball was bowled all four results were still possible. A quick single saw the match end a tie (Lavant 122-9 off 47 overs) and cricket declared the winner.

Playing Record

P 26 W 9 L 16 Tied 1

## Rowlands Castle Surgery

Surgery opening hours: 8:30 to 18:00 & alternate Saturday mornings 8:30 to 12:00.

GPs phone-in for consultations & advice 08:00 - 08:20 Mon – Fri - Tel 02392412309

Pharmacy opening hours: 8.30 to 18.00 & Saturday mornings 9:00 to 13:00.

(Pharmacy closed for lunch 13:00 to 14:00)

The Surgery situated at the tip of the green has been providing the village with GP services for decades. Our attached pharmacy opened in May 2010.

New patients welcome, pop in to reception & ask for the new patient registration form

12 The Green, Rowlands Castle, Hampshire, PO9 6BN

Tel: 023 9241 2846 Fax: 023 9241 3070 [www.rowlandscastlesurgery.co.uk](http://www.rowlandscastlesurgery.co.uk)

# St John's Church

## Upcoming Events

by Revd Trevor Filtness Vicar of St John's

I think I've just managed to scrape in with St John's news for this edition! I am never too sure where the time goes!

I've just come from the opening of the fantastic St John's School Tree House with its double outdoor classrooms. It's a tremendous addition to the outdoor capabilities. The Tree House has been yet another co-operative project between the school, hard-working & generous parents and generous sponsors. Councillor Edgar, Hampshire County Councillor with responsibility for education, remarked that all the children there will be able to look back with their own children in 20 years' time and tell them that they were at the opening! I know that Mrs P-H our head will comment on it in her report so I had better not say any more. But it is an exciting addition in support of the curriculum.

I know I've mentioned our churchyard in previous reports but I thought it worthwhile just saying a quick word about who can be buried in the churchyard because we have so many enquires. As space is now limited the Parochial Church Council passed a resolution several years ago restricting burial to those who live within the church parish boundary. Also plots can no longer be reserved. There is a little flexibility, especially if someone has only recently moved out of the parish or if someone is a regular member of the congregation. Family graves may also be re-used. Burial of ashes is however even more flexible. Please do get in touch if in doubt or you would like clarification, especially when considering your will.

Just to let you know about our Advent/Christmas worship. We would love to see you at one of these services.

Sunday 29th Nov at 6pm: Advent Sunday Candlelit Praise Service with Advent readings and traditional advent hymns. This is not the Nine Lessons & Carols - see below.

Sunday 6th Dec at 3pm in the Church Centre & Church: Messy Christingle. A very popular family occasion. It is a wonderful way for families to think about all the unhappy and children in the world and the work of the Children's Society. An excellent tea is provided!

Sunday 13th Dec at 3.30pm: In Loving Memory. A candlelit service. This service is for everyone who will miss their loved one(s) this Christmas and



would like to light a candle in loving memory. Tea and refreshments after the service.

Sunday 20st Dec at 6pm: Traditional Festival of 9 Lessons and Carols  
Christmas Eve 6pm: Carols Around the Tree, a fun family service with carols and an 'Instant Nativity Scene'. A great family occasion but get there early.

1130pm: Traditional Midnight Holy Communion.

Christmas Day 10am: Family Holy Communion.

Please get in touch if you would like to have more details

With every blessing for Christmas and 2016.

Trevor  
Revd T Filtness  
Vicar  
St John the Baptist  
Rowlands Castle  
07785 568056  
02392 410111 (Office)

## MORRIS BUILDING SERVICES

Shaun Morris

113 Finchdean Road, Rowlands Castle, Hants, PO9 6EN

RENOVATIONS  
ALTERATIONS  
SMALL WORKS

ALL ASPECTS OF PROPERTY MAINTENANCE AND  
REPAIRS, INTERNAL AND EXTERNAL

ROWLANDS CASTLE      FREE ESTIMATES  
(023) 9241 3130      07941 742598



## ARTHRITISFIRST

### Exercise Classes and Home Visits

- Improve your fitness and mobility
  - Tailored to your needs
- All ages and abilities welcome
- Classes in Emsworth, Havant and Chichester

### FREE Taster Class

Run by a **Chartered Physiotherapist**  
Please contact Juliette O'Hea

**Tel: 02392 413885 or 07974 238787**  
**Email: [physio@arthritisfirst.co.uk](mailto:physio@arthritisfirst.co.uk)**  
**Website: [www.arthritisfirst.co.uk](http://www.arthritisfirst.co.uk)**

# St Hubert's Church



## So who was St Hubert by John Bates

So who was St. Hubert?  
And why was the name of our church changed?

Standing alone in the fields of old Idsworth is the little church of St. Hubert. Believed to have been built by Earl Godwin, father of Harold of 1066 fame, it dates from about 1053. However Roman coins and pottery found on the site suggest it was built on the site of a much earlier building. Originally dedicated to St. Peter it was rededicated to St. Hubert, in the late 19th century. But why St. Hubert?

A clue to this puzzle lies in our 14th Century wall paintings. Discovered in 1864, having been painted over, probably during the reformation, they are believed to date from c. 1330 and are unusual in being in two halves divided by a zigzag border.

The lower picture shows the presentation of John the Baptist's head to Salome at King Herod's feast, with a separate scene at the left-hand end showing St. John being thrown into prison.

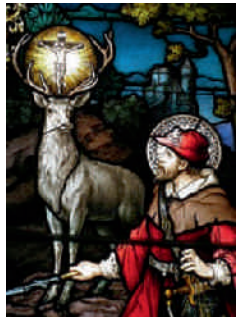
The hunting scene in the upper picture is less easy to decipher. and in earlier times it was thought it depicted St. Hubert converting or curing a Lycanthrope, a man who thought himself to be a wolf (a werewolf). This theory has now been discounted and it is generally agreed that right-hand end of the picture depicts St. John being arrested and the remainder tells the story of a "hairy anchorite", a hermit who, according to legend undertook to walk on all fours until he had atoned for his sins of in chastity and murder. At the time of the paintings this legend was well known and often linked with John the Baptist. So who was St. Hubert?

St. Hubert (or Hubertus) was born, probably in Toulouse, c. 656. He was the eldest son of Bertrand, Duke of Aquitaine. Reputed to have great charm and an agreeable nature he was, like most noblemen of the time, addicted to hunting and the chase.

Due to political upheaval Hubert moved to the Austrian court at Metz and soon became Grand Master of the Household. At this time he married Floribanne, daughter of the Count of Leuven. They had a son who would later become the Bishop of Liege. Hubert's wife died in child birth. Grief stricken Hubert retired from the court to the forests of Ardennes and spent all his time in hunting. But God had other plans for him.

On Good Friday morning, when all good men should have been in church, Hubert saddled his horse and set out on a hunt. He came across a magnificent stag and as he drew his bow the animal turned its head and there between the antlers Hubert saw a crucifix and heard the voice of God saying "Hubert, unless thou turnest to the lord and leadest a holy life, thou shalt quickly go down to hell." Hubert dismounted and prostrated himself and said "Lord what would thou have me do". God instructed him to seek out Bishop Lambert in Maastricht and follow his instruction.

Hubert Did as God bade him. He gave up all his many honours and wealth and



# St Hubert's Church

acceded his titles to his brother, Odo. He studied and was ordained, and made a pilgrimage to Rome in 708. Whilst he was there Bishop Lambert was assassinated and the Pope appointed Hubert as the new Bishop of Maastricht.

He was a good bishop, diligent in fasting and prayer and distributed food and money to the poor and needy. He spent a lot of his time evangelising among the pagans in his beloved forest of Ardennes and the countryside of the Rhine.

Hubert died peacefully in a village near Liege on 30th May 727/728.

Originally buried in the Church of St. Peter in Liege his bones were later exhumed and reburied in the Benedictine Abbey of Andage, in what is today the town of Saint Hubert, although the saint's bones disappeared during the reformation. His feast day is 3rd November and is celebrated at our church with hunting horns, venison sausages and stags fizz after our regular 9.30 service.

He is the patron saint of: archers; dogs; forest workers; trappers; hunting and huntsmen; mathematicians; metal workers and smelters.

Although our church may have been renamed in error we are very proud of our saint and remember his life and deeds with fond reverence and feel he is a very appropriate patron for a church set in the beautiful Hampshire countryside.





St. Hubert's Church, Idsworth  
Christmas Services.

Sunday 20th Dec. 9.30 am

A Service of 9 Lessons and Carols for all the family

Christmas Eve 24th Dec. 11.30 pm

Midnight Communion by Candlelight

Christmas Day 25th Dec. 9.30 am

Family Eucharist with Carols



# Church on the Green

## **Its that time of year.....again!**

**by Jason Clark COTG**

**T**he saying that “time flies” certainly is true! In fact, the older you get, the more time grows wings.

We at the Church on the Green have certainly been busy this year! Music Makers which we hold bi-weekly on a Friday morning has certainly taken off, with music, dance, free play, finger food and of course, a warm drink and a slice of cake for the adults, this is a hit with mums and toddlers alike.

SPEC Youth Club is also going strong, with games, tuck shop and hot dogs, this proves to be a winner every month..... we even had a friendly game of rugby over the recreational ground last time.

We held a Family Service and an after BBQ in July for both our Church members and for the families that attend our various activities, it was a lovely time and the food was absolutely delicious!

A fun time was had by all at the Village Fair, lots to do and see, with an extravaganza of cakes on sale.

The Tuesday and Wednesday Coffee Mornings continue to go well and with the winter fast approaching, there is something very comforting about a warm drink, cake or biscuit and some friendly faces.

Our annual Musical Evening in September again proved a very entertaining night with lots of music and a poem on offer..... and over £120 raised for a local charity helping teenagers with disabilities. We have already got the 3rd of September 2016 booked for the next instalment already!

With Christmas only around the corner, we have some very special services coming up.

On Sunday 20th December, 5pm, we have 'Carols by Candlelight', a short service with hot drinks and mince pies being served before.

Tuesday 22nd December, 10.30am, we have 'Carols over coffee', a time of choosing and singing carols along with the piano.

And on 24th December, 11.30pm, we have our 'Christmas Eve Celebration Service'.

So as you can see, busy times already and busy times ahead.

May we, as a Church, take this opportunity to wish you all a very Happy Christmas and New Year.

Take care and God Bless you all

Jace Clark (Student Pastor)



# Flood Control

## Clearance of sludge and silt from culvert in Stansted Woods off Finchdean Road by Steve Protheroe

In the last few weeks local residents and dog walkers who enjoy the beautiful countryside when walking in Stansted Woods will have noticed the sign giving information and the private contractor undertaking the work to clear the culvert, comprising of 3 very long tunnels of sludge and silt.

The work has been commissioned by Stansted Park Foundation, whose Head Forrester said his staff could not recollect when the culvert was last cleared. A private contractor skilled in undertaking such difficult and at times dangerous work has been clearing the 3 tunnels of many years build up of silt and sludge. They have brought out old bottles and glass that date back to pre 1940's!

It is hoped that many of these artefacts can be looked after by the village Historic Society and Paul Marshman has shown a great interest in helping here.

The Flood Action Group have in the last 6 months been working closely with staff from SSE - Scottish and Southern Electric to secure a substantial grant to enable this work to take place, along with a contribution from the landowners too of course.

SSE funding comes from a Resilience source and their staff have been delighted by the feedback the contractors have been receiving every day from local residents, who can see that this work will greatly improve the flow of water through The Sling.

Whilst we are dealing with ground water flooding and flash flooding in times of heavy rain, it is considered, but yet to be proven that this work could see a reduced level of flooding on Finchdean Road. Time will alone will tell of course.

Whilst the ground water will pass quicker in to The Sling the onward movement of the water towards Havant is of course governed by the highway's design and build of the bridge at Woodberry Lane adjacent to the ford, where the circular portals and large rectangular opening allow the water to flow on through.

Further information on this work has been provided by Duncan MacDonald of SSE. He writes: When we set up the Resilient Communities Fund, we had a vague idea of the kind of applications we would receive for segments of the £1million fund. In all of our the





# Flood Control

pre-launch planning, one thing we never expected to be asked to help with was the clearing of culverts. Our initial examination of the application seemed to suggest that it may not be within the fund's remit. What do culverts have to do with resilience planning? Very few applications are rejected outright. If they are then it is usually because they do not meet the basic criteria that the money has to go to a not-for-profit organisation that has the welfare of the local community at its heart, and the application must come from within Southern Electric Power Distribution's operating area of central southern England. Despite the initial reservations of the processing staff – who had no first hand experience of culverts - the application from Rowland's Castle was sent to the deliberating committee, which comprises the British Red Cross, Age UK, National Energy Action, and three senior managers from Southern Electric Power Distribution.



A chance phone call from our Customer and Community Advisor for Rowlands Castle, Nathan Jeffery, to check on the progress of the application completely changed the view of the fund processing team. Impressed by Nathan's desire to help the community, they took the opportunity to get more information about the culverts, the applicant and the local area. After Nathan's intervention, the fund processing team could probably make culverts their specialist subject on Mastermind!

The application from Rowland's Castle has also helped us at Southern Electric Power Distribution in a number of ways. It has given us an insight into how different communities perceive resilience, and we now ask for as much information as possible before sending each application to the deliberating panel. The projects we have funded so far have ranged from flood prevention equipment to portable generators for community halls, to funding a group of amateur radio enthusiasts who now use their network as a communications hub during severe weather events when normal communications may be down. These are the kind of applications we did expect when we launched the fund: now we know about culverts as well – thanks to the application from Rowland's Castle and our very own Nathan Jeffery.





You Have NOT Missed the Boat!!

Langstone Cutters Rowing Club is a friendly club rowing traditional fixed-seat pulling boats in Langstone and Chichester Harbours on England's south coast.



Rowing is just about the best exercise you can get, using almost all of your muscles but without high impacts. We row on some of the loveliest waters in the world, teeming with wildlife, and it is enormous fun. If you feel that rowing might be for you, read on!

The club welcomes rowers of all standards, from people who just like to get out on the water for fun to rowers who want to compete in local regattas and national events such as the Great

River Race, where Langstone Cutters have a formidable record of success.

Longer, excursion rows take place on Saturdays, Sundays and during the week which are organised in advance.

Club rowing on Sundays is open to all, starting about two hours before high tide. Just turn up at the slipway between the Royal Oak and the Old Mill and you will be welcomed by our friendly members and introduced to an experience that may change your life!

The best way of keeping informed about club activities is by signing up for the forum at <https://sites.google.com/site/langstonecutters3/home>



## The Somme by Tony Cowin – Historical Society

In early 1916, Haig and Joffre agreed on a joint campaign on the Somme, to relieve German pressure on the French in the fortress city of Verdun. The Somme, and its tributary the Ancre, weave their way through rolling chalk downland, with topsoil of clay and flint, very suitable for sugar-beet. The going is much like north Hampshire. The Ancre ahead of our lines is no wider than the Meon at Meonstoke.

Rowlands Castle lost 3 men in this campaign.

Tom Piggott	Private 1st Batt Hampshire Regt.	1 July 16
James Yalden	L/Cpl 15th (Service Batt) Hampshire Regt.	15 Sep 16
William Conduct	Private 2nd Batt Hampshire Regt.	13 Oct 16

Preparation.



Haig brought forward 25 infantry divisions, 3 cavalry divisions. The French had 14 infantry divisions, and 4 cavalry. We had 808 field guns (3.5 inches calibre), 128 60-pounders (5-inch), 410 howitzers, and 120 larger guns, the French rather more. Vast dumps of ammunition were made. Sappers tunnelled forward, to mine the German line, to bring troops and trench mortars into No Mans' Land, and to counter German mining (read Birdsong by Sebastian Faulks, for a good account of this underground war).

The German lines, on the map, are very much those taken up in 1914 following their retreat from the Marne. But in 2 years they were much improved. Critically, they provided 'mined dug-outs' (ie dug by miners) up to 50 feet below ground, with up to 4 wide stairways to the trenches. Troops and weapons were there safe from all but the largest calibre shells (15 inch, of which we had very few), or our own mining. Multiple exits generally allowed the troops to man the trenches, despite damage from our artillery.



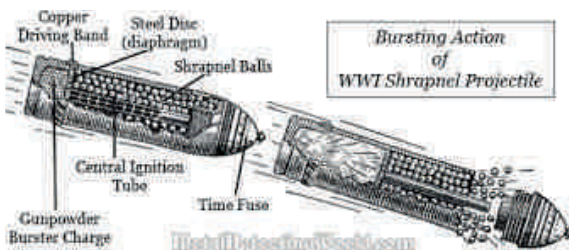
The preliminary bombardment of the German trenches and artillery started on 24 June. Cutting of the German wire was largely given to the field guns, firing shrapnel shells, which had a very small bursting charge. These proved of mixed effectiveness. Mist and showers caused the attack to be deferred by 2 days on 28 June, to the morning of 1 July. Heavy gun and howitzer ammunition, difficult to re-supply, had therefore to be conserved, for that attack. The First Day (1 July 16).

At 6.25 am the final bombardment of the German lines started. The attack was planned for 7.30am. A mine exploded at 7.20, alerting the Germans, who responded

# History

almost immediately with artillery, and then with machine-guns (7.25), as their men came up from their deep dug-outs. More of our mines were fired at 7.28.

The 1st Hampshires were part of the 4th Division, on the left of our line, near the village of Serre. The first wave of infantry, including men of the East



Lancashires, was pinned down in No Mans' Land. The Hampshires, led by Lt. Colonel the Hon. Laurence Palk carrying a swagger stick, came forward as part of the second wave at 7.40, to suffer many casualties. Trenches and No Mans' Land were crowded with dead and wounded. The 4th Division was declared 'unfit for further offensive action' by its CO at 3pm.

4th Division suffered 5,754 casualties (killed and wounded) on this one day, including a brigade commander and 6 battalion commanders killed, and 3 battalion commanders wounded. Tom Piggott died here. Pompey Pals.

The 15th (2nd Portsmouth) battalion, Hampshire Regiment was raised in Portsmouth on 5 April 1915, and moved from Aldershot to France in May 1916. They took part in their first full-scale battle on 15 September 1916 (the battle of Flers-Courcelette).

Haig had been keen to include tanks in the Somme campaign. This battle was the first in which they were employed. 49 Mark 1s were available, of which only 36 reached their start line. Despite losses from artillery and breakdown, they proved effective. The Portsmouth Pals marched up the main street of Flers behind a tank (D6 Lieutenant Arnold), which destroyed 3 German machine guns. The Germans retreated. Haig ordered another 1,000 tanks!

(The tank gunners manning their long-barrelled 6-pounders were trained in Portsmouth by the Royal Naval Gunnery School, Whale Island).

Lance-Corporal James Yalden died in this attack. After the war, the villagers of Picardy rebuilt their homes, aided by the Treaty of Versailles, and by the British League of Help, in which Portsmouth 'adopted' Flers.





## The End of the Affair.

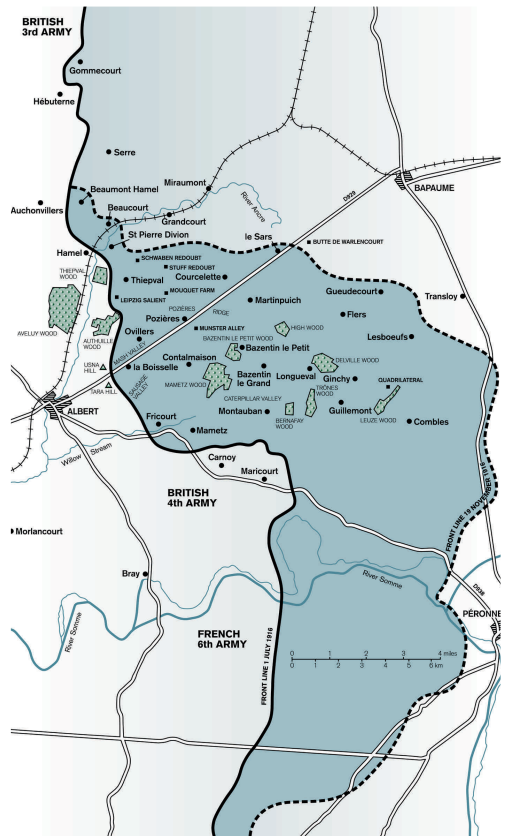
William Conduct, a regular like Tom Piggott, was much travelled. In 1914 2nd Hampshires were in India. They came back to Plymouth December 1914, sailed for Egypt and Gallipoli 29 March 1915, landed at Cape Helles from the River Clyde 25 April 1915 (with severe losses), were evacuated to Egypt January 1916, and landed in Marseilles 2 March 1916.

2nd Hampshires were kept in reserve on 1 July, near Beaumont Hamel, at the north of the battle. After some support activity (repairing trenches, burying the dead), they were withdrawn to the Ypres area on 27 September. Come October, the weather broke, and German resistance hardened (they were reinforced, both by marine infantry from the coast, and, as Joffre had hoped, by infantry from Verdun). 2nd Hampshires returned on 8 October, entering the front line 11 October. They acted in support of the Newfoundlanders' assault of Hilt Trench at Gueudecourt on 12 October, and took over the captured trench during the night 12/13 October. William Conduct died that morning.

Close to the trench stands one of the 5 caribou erected by the Newfoundlanders. It also marks the very furthest point of the Allied advance in 1916, a mere 6 miles from the German lines of 1 July. The trench became the front line through the following winter.

Remembrance.

Tom Piggott, James Yalden and William Conduct are remembered on Edwin Lutyens' magnificent memorial at Thiepval, which bears the names of over 70,000 British and South Africans, killed on the Somme, who have no known grave.





The children of Rowlands Castle are invited to:  
The Rowlands Castle Association's Annual

## **CHILDREN'S CHRISTMAS PARTY**

**Sunday 20th December 11.00-13.00**  
**at Parish Hall, RC**

Join us for an afternoon of magic, dancing, and  
high tea for the children plus a visit from Santa  
Claus. Only £1 per child

(please bring a present with your child's name clearly labelled)



Featuring  
**Magic Mikey**



For more information  
and to book tickets  
please contact:  
Anita King on  
07952 882201 or  
[anita.mcmullan@virgin.net](mailto:anita.mcmullan@virgin.net)



## RCA Quiz night by Sue Connell

There was a great turn out for the annual RCA Quiz Night which took place this year on Saturday 17 October in the Parish Hall. The Hall was full as 13 teams did battle to win one of the four prizes on offer. First prize was six bottles of wine, second prize was six boxes of Maltesers, third prize was a box of chocolates, and there was even a fun booby prize for the losers!

The quiz questions were set by Sue Connell and marked by Kevin Connell, and contained a Film Picture round, a Geographic Landmark round, a 2015 round, and five other subject rounds. Our resident Quiz Master, Dave Richardson, made sure everything ran smoothly, and entertained everyone with extra snippets of knowledge related to the questions. The scores were very close at the end, which made for an exciting and hotly contested finish!

At half time there was a greatly anticipated meal of fish and chips, prepared for and delivered by Deep Blue. There was also an excellent raffle, which took place before the final scores were announced, and included donations from the village of:

### PRIZE

Haunch of venison  
£25 hair styling voucher  
£10 Token for Tea  
2 x Family Pass to Staunton Park  
Bottle of Wine  
Bottle of Wine  
Knitting Set  
Lollipop Moulds and Toys  
Hand Cream Set  
Bowl of Narcissi and Garden Scissors  
£15 Voucher  
£20 Meal Voucher  
£30 Voucher for a Meal for four  
Bottle of wine

### DONATED BY

Stanstead Farm Butchers shop  
The Style Studio, R.C.  
Tea on The Green café  
Staunton Country Park  
Londis Store, Rowlands Castle  
Sandra @ The Fountain Pub  
The Hand Made Studios  
Martha Dombey  
Sylvia Pitt  
Lindsey White  
Taste of India on The Green  
Robin Hood  
The Castle  
Paul Marshman

Our takings were £1119 but after food, drink, prizes etc. and hall hire it comes to about £500 that we made for the defibrillators and training. Many thanks to everyone who came along and ensured that this was a fun and worthwhile evening. See you all next year!

# RCA Quiz

Winners of the quiz were Gazellig Samar (top left) with a 7 point lead. Universally Challenged were second, Hands Across the Sea third and Amnesiacs won the wooden spoon.



*Photos by Martha Dombey*



**is here**

**Southern Mower Services page  
55 last issue**

## Divorce, Mediation and Family Law Specialists

Making separation manageable.

We are compassionate, professional and able to offer you a personal service to achieve the best possible outcome for you and your family.

Both Lisa and Kristy are trained mediators and collaborative lawyers so are able to offer non-court options. Your first consultation with us will always be at no charge – we believe that it is important that you have absolute confidence in our services before we work with you.

We are transparent about the costs you are likely to incur from the outset. There will be no hidden costs and we offer various payment plans.



Tel: 01243 373165 • Email: [info@lkfamilylaw.co.uk](mailto:info@lkfamilylaw.co.uk) • [www.lkfamilylaw.co.uk](http://www.lkfamilylaw.co.uk)

Fiscal House, Emsworth, Hampshire PO10 7JE



**RKdia Catering Services specialise in outside catering for:**

**Christenings \* Weddings \* Funeral Receptions  
Black Tie Dinners \* Garden Parties \* Dinner Parties  
Mobile Bars \* Hog Roasts \* BBQs**



**Christmas Dinners for community and social groups brought to your  
venue, superb value for money, a quality meal at a modest price.**



**2015 bookings now being taken**

Telephone: 023 9259 5158 Email: [rkdia@radian.co.uk](mailto:rkdia@radian.co.uk)

RKdia Catering, Knighton Corner, Portsmouth Road, Horndean, PO8 9NN

[www.rkdiacatering.co.uk](http://www.rkdiacatering.co.uk)



**Richard C Arnold**

Optometrists & Contact Lens Practitioners

Est 1890

...because eyesight is precious

At Richard C Arnolds, your eye health is always our top priority.

Our experienced and fully qualified staff take each eye examination seriously and spend up to half an hour ensuring your eyes are healthy before accurately measuring your prescription.

We are proud to use the latest techniques and technologies and always strive to provide a service which is second to none.

## Extended Eye Examinations

We also offer an extended eye examination service during which additional tests are performed using some of the latest technology.

These examinations are highly recommended for patients with increased risk of problems due to medical or genetic reasons.

## Advanced Technology

We recommend that all our clients have regular optomap examinations.

With the latest Daytona Optos we can quickly image a large area of your retina to check for problems in this delicate tissue.

If necessary we can use our OCT scanner to see inside the structure of the eye to immediately diagnose any problems, so that essential treatment can begin as soon as possible.

For peace of mind, phone now to book your next eye examination.



Daytona Optos  
Advanced Digital Retinal Imager

because eye care matters

Petersfield: 01730 263302

Midhurst: 01730 814035

Cowplain: 02392 250641

[www.rcarnold.co.uk](http://www.rcarnold.co.uk)

# Ashley Electricians

Dalkieth, Woodmancote Lane, Woodmancote,  
West Sussex PO10 8RD

- Local reliable electrician.
- All electrical work undertaken from sockets to rewires.
- Free visual safety checks & estimates.
- Fully insured & Part 'P' registered.
- Member of Trading Standards 'Buy with Confidence' Scheme.

Contact Ed Ashley on 01243 373195 or 07733 467536

[ejashley@tiscali.co.uk](mailto:ejashley@tiscali.co.uk)

[www.checkatrade.com/ashleyelectricians](http://www.checkatrade.com/ashleyelectricians)

**Checkatrade.com**  
Where reputation matters



AMELIA WARREN

INTERIOR DESIGN

DESIGN

CURTAINS

BLINDS

UPHOLSTERY

[www.ameliawarreninteriordesign.co.uk](http://www.ameliawarreninteriordesign.co.uk)

[ameliawarren@btinternet.com](mailto:ameliawarren@btinternet.com)

Wellsworth Lane

Rowlands Castle

07753362842

Follow Me



**PROFESSIONAL PLUMBING  
& HEATING SPECIALISTS**

**A. A. BARRETT**

51 Hatchmore Road  
Denmead  
Waterlooville  
PO7 6TE

Tel: 023 92258057  
Mobile: 07802321269

Tel: 023 92258057  
Mobile: 07802321269



# Alton Abbey - Advent Concert, Friday 11<sup>th</sup> December 7.30pm

The **Rose Belles** will be entertaining us with seasonal music in the Abbey Church. Diana North, a professional soprano, is the daughter of a founding member of the Friends of Alton Abbey, and has offered to bring her friends to perform at this fund-raising event, in Advent. ([www.rosebellesmusic.com](http://www.rosebellesmusic.com))

There will be two half hour recitals with an extended interval when mulled wine and finger food will be served.

Tickets are £15, available from "Tickets", Friends of Alton Abbey, Alton Abbey, Abbey Road, Alton, GU34 4AP  
Cheques should be made payable to "Friends of Alton Abbey".  
Please include a SAE, a telephone number, and/or an email address  
For more information - email: [friendsofaltonabbey@gmail.com](mailto:friendsofaltonabbey@gmail.com)  
tel.: 01420 562126

---

Organised by the Friends of Alton Abbey Charity No 284876

## Concert of Advent Music by The Rose Belles

[www.rosebellesmusic.com](http://www.rosebellesmusic.com)

To reflect the quieter, penitential season of Advent, they will be performing the music either a cappella or with just piano.  
in Alton Abbey church, GU34 4AP

**Friday 11<sup>th</sup> December 7.30pm**

Two ½ hour concerts, with an extended interval  
when mulled wine, and light refreshments will be served

**Tickets £15**, available from "Tickets", Friends of Alton Abbey,  
Alton Abbey, Abbey Road, Alton, GU34 4AP

Cheques should be made payable to "Friends of Alton Abbey".

Please include a SAE, and a telephone number, or an email address

For more information - email: [friendsofaltonabbey@gmail.com](mailto:friendsofaltonabbey@gmail.com); 01420 562126



# Print. Perfected

As the South's largest commercial printer,  
we handle all your print needs:

**Programmes • Brochures • Folders • Catalogues  
Stationery • Flyers and much much more...**



**DELIVERIES ON TIME EVERY TIME.  
QUALITY GUARANTEED.**



Follow us on Twitter for up to the minute news,  
print tips and last minute offers.

*Large enough to cope, small enough to care*

T: 023 9233 4900

[enquiries@bishops.co.uk](mailto:enquiries@bishops.co.uk)

[www.bishops.co.uk](http://www.bishops.co.uk)

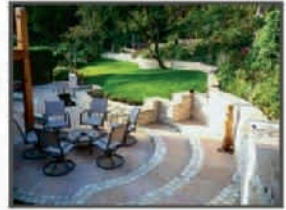


Print. Perfected



**Inspiring gardens....  
from concept to completion**

*Bespoke Designed Gardens • Planting*



*Extending your home into your garden*

**FREE CONSULTATION AND QUOTATION**

**Tel: 02392 413865 Mobile: 07767 867603**

office@charlesworthoutside.co.uk www.charlesworthoutside.co.uk



**HEATING • PLUMBING • BATHROOMS**

I can help with all your boiler, heating, plumbing and bathroom needs.  
And I live right here in the village, so can call round at short notice.

**Here's my number.  
Please keep it in a  
safe place.**

**07905 908143**



**City & Guilds  
Qualified**





DITCHAM  
PARK SCHOOL



# Where every child is known and valued

We are a co-educational, independent day school for children aged 4-16 years near Petersfield, Hampshire

- ▶ Caring family atmosphere
- ▶ Small classes and individual attention
- ▶ Impressive GCSE results
- ▶ Outstanding location with excellent facilities
- ▶ Wrap around care available before and after school

For further information, or to book an appointment for a tour with the Head Teacher, please call ☎ **01730 825659**  
Email: [admissions@ditchampark.com](mailto:admissions@ditchampark.com)



# fabulous flooring with a perfect fit!



visit our website  
to find out more  
[waterloovillecarpets.co.uk](http://waterloovillecarpets.co.uk)

Service is the secret of satisfied customers and satisfied customers are the secret of our 47 year success.

- Fabulous Carpets from Greendale, Brintons and Ulster
- Crucial Trading/Alternative Flooring Specialist
- Fabulous Vinyl Tiles from Amtico, Karndean, Victoria & Vusta
- New Click only Vinyl Planks from Victoria
- Fabulous Quickstep Laminate Flooring
- Oak Floors – Engineered Planks and Solid Click
- Fabulous Bamboo, Cork and Sustainable Flooring
- 12 MONTHS INTEREST FREE CREDIT on all products



We promise you a flooring that fits your requirements, fits your budget and fits beautifully into your home. Please call in, anytime.

**A pleasure to come home to.....**

31 The Square, Petersfield, Hampshire Telephone: 01730 262223/267381 Fax: 01730 267394  
email: [sales@waterloovillecarpets.co.uk](mailto:sales@waterloovillecarpets.co.uk) [waterloovillecarpets.co.uk](http://waterloovillecarpets.co.uk)

# Handyman

Household maintenance

*Home Maintenance*

*Carpentry*

*Door Hanging*

*Repairs*

*Painting/Decorating*

*Fencing*

*Jet Washing*

*Gutter Cleaning*

*Cabinet Making*

*Shelving*

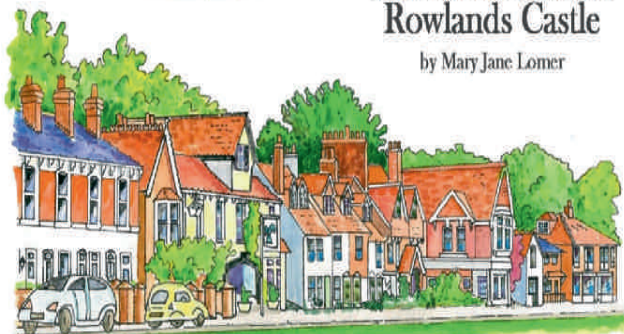
*For all the jobs you can't or don't want to do  
Call Alan on 07580 067190 or 023 9241 2797  
for a free no obligation quotation  
Email: alan@handyman66.com*



A selection of local watercolour prints, handmade cards & copies of the book are available online: [www.rowlandscastlepaintings.co.uk](http://www.rowlandscastlepaintings.co.uk)

## Round and About Rowlands Castle

by Mary Jane Lomer



Book our school and the Pulmonary Hypertension Association benefit from the sale of this booklet.

St John's Primary School Outdoor Learning Project

St John's School joins with the local community to give the pupils an awareness of their heritage and leave their footprint for future children.

The Pulmonary Hypertension Association [www.phassociation.uk.com](http://www.phassociation.uk.com)

Pulmonary Hypertension affects all ages and causes high blood pressure in the lungs causing chronic fatigue and breathlessness.



Mary Jane Lomer has painted watercolours in and around Rowlands Castle since 1975.



Copies of the book together with a selection of prints and cards are available to buy online, in local shops and from Mrs Lomer's residence at 70 The Green.

Any Questions? Email:  
[info@rowlandscastlepaintings.co.uk](mailto:info@rowlandscastlepaintings.co.uk)

[www.rowlandscastlepaintings.co.uk](http://www.rowlandscastlepaintings.co.uk)





## Petersfield Framing Studios

### Picture Framing by Andy Parks, MA, G.C.F.

- ◆ Collection and Delivery Service in the Rowlands Castle area.
- ◆ Guild Commended Framer (G.C.F.) with 23 years experience.
- ◆ Over 400 different mouldings and 200 mount boards to choose from.
- ◆ Very competitive prices.
- ◆ Picture framing tuition also available.
- ◆ Tel: 01730 269926.
- ◆ Visit: [www.petersfieldframing.co.uk](http://www.petersfieldframing.co.uk)

***"We Collect and Deliver Your Picture Framing"***

**microsomma**



### IT Support for Home & Small Business

**[www.microsomma.com](http://www.microsomma.com)**

**Please see my website for local recommendations...**

**Reliable & Local**

**Available 7 Days**

**Qualified & Experienced**

**0845 0170772**

**07796 346526**

**[david@microsomma.com](mailto:david@microsomma.com)**



ROWLANDS CASTLE ST JOHNS CEC  
PRIMARY SCHOOL  
Whichers Gate Road, Rowlands Castle  
Hampshire PO9 6BB

Monday to Fridays 8.30am ~ 4.30pm  
For children aged 2-5 years

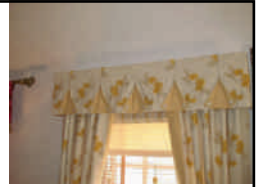
Early Years Foundation Stage curriculum  
For a prospectus, or to arrange an informal chat, please contact:

Lorraine Bryant ~ Manager on 023 9241 2095

**"The experienced and enthusiastic staff are skilled at making learning fun".**

**Ofsted 2015**

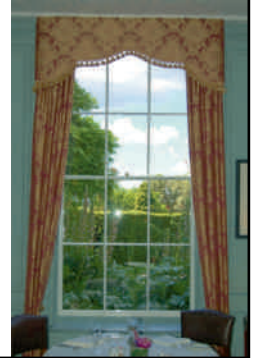
Registration Charity Number: 1088132



## *Elizabeth Turner Soft Furnishings Ltd*

Hand-made quality curtains, Roman blinds, cushion covers and other soft furnishings. We also supply curtain poles, tracks, tie backs & other curtain accessories, plus provide a fitting service.

01243 389939 / [info@elizabethturner.co.uk](mailto:info@elizabethturner.co.uk)  
[www.elizabethturner.co.uk](http://www.elizabethturner.co.uk) / Find us on facebook!



## **Craniosacral Therapist      Louise Toone RCST BCST**

### **Have you thought about trying Craniosacral Therapy?**

This mindful therapy can help people of all ages, from the very young to the very old. It helps with physical difficulties, such as recovery after injury and surgery.

Craniosacral Therapy helps relieve stress symptoms such as emotional over-whelm, headaches and insomnia. I am qualified to treat Post-Traumatic Stress Disorder. Treatments are gentle and relaxing, helping you find balance.

Craniosacral Therapy is so safe it is suitable for Pregnant Women, Mothers and Babies. It can aid recovery after birth and improve babies' feeding and sleeping patterns.

**I offer convenient appointment times at my home in Rowlands Castle.  
Find out more by visiting my website at [www.gentletouchcst.com](http://www.gentletouchcst.com)**

**Contact Louise on 02392 413278  
Email: [louise.toone@btinternet.com](mailto:louise.toone@btinternet.com)**



## S.Roberts Upholsterers

Professional upholstery.  
Contract and domestic - any size work undertaken

We provide a free measuring and quotation service and you can find us on [Checkatrade.com](http://Checkatrade.com)

**Checkatrade.com**

Call on **01243 377200**  
for all your upholstery requirements

[www.re-upholster.co.uk](http://www.re-upholster.co.uk)



Unit 10, Palmers Road Industrial Estate, Emsworth, Hants PO10 7DH

## Burchett Decorators

- Domestic, Commercial & Insurance Work
- 22 Years Experience
- All Types of Decorating including Wallpapering, Coving & Carpentry
- Fully Insured
- Clean, Tidy & Friendly Service

Ring for FREE Estimate  
or Just Helpful Advice

**07866 691 984**  
**023 9241 3548**

Email: [Burchett.davis@btinternet.com](mailto:Burchett.davis@btinternet.com)

Keith was friendly, reliable and worked exactly as he promised to, neat, tidy and very personable

Customer, Stedham, 2012

**Checkatrade.com**  
Where reputation matters



Member for 8 years

Burchett Decorators, Finchdean, Nr. Rowlands Castle, Hampshire



BUILDING CONTRACTORS

COMMERCIAL, INDUSTRIAL and  
MAJOR DOMESTIC WORKS

Joinery Mill, The Green, Rowlands Castle,  
Hampshire. PO9 6BW

Tel 023 9241 2741  
www.winnicott.co.uk

*Established*  
**1904**

Fax 023 9241 2212  
mail@winnicott.co.uk

**homehardware**

**Not just paint!**  
**WE COVER EVERYTHING!**

- ✓ GREAT SAVINGS ON MANY RANGES
- ✓ FRIENDLY EXPERIENCED STAFF
- ✓ **OPEN SUNDAYS**

**Austens** Alton Tel: 01420 85115  
**Petworth** Emsworth Tel: 01243 376852  
 Tel: 01798 342104  
**Billingshurst** Romsey Tel: 01794 512141  
 Tel: 01403 782963  
**Midhurst** Rowlands Castle  
 Tel: 01730 815979 Tel: 02392 412332

**Family Run**

**Dulux**  
PAINT MIXING CENTRES

[www.rowlandshomehardware.co.uk](http://www.rowlandshomehardware.co.uk)

**POST OFFICE** **OPEN 7 DAYS A WEEK**



# CHILDRENS LEARNING CENTRE

**RATED OUTSTANDING BY OFSTED 2011**

Member of; 4Children

125 New Brighton Road, Emsworth

**EDUCATIONAL NURSERY AND DAY CARE SERVICES**

**OPEN 50 WEEKS A YEAR 8.00AM - 6.00PM**

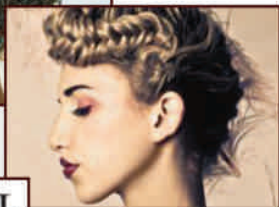
We offer full time and term time care for children from 0 – 5 years, hours and days to suit your requirements. Also we provide holiday activities for children 3 – 5, and an after school club



Telephone: 01243 372015 or email: [childrenslc@btconnect.com](mailto:childrenslc@btconnect.com)



JOICO



TIGI



**02392 412 606**



[info@stylestudio-rowlandscastle.co.uk](mailto:info@stylestudio-rowlandscastle.co.uk)

## Your local Hair and Beauty Salon

Recommended by The Good Salon Guide, we're situated in the heart of Rowlands Castle.

Offering a professional portfolio of hair and beauty treatments by a team of experienced hairdressers and beauticians.

- Hair for ladies and gents
- Beauty
- Special packages
- Late appointments available by request

Contact us: 3 Links Lane, Rowlands Castle, Hampshire, PO9 6AD

Find us online: [stylestudio-rowlandscastle.co.uk](http://stylestudio-rowlandscastle.co.uk)





## Legal Advice You Can Trust

George Ide LLP Solicitors has a well established and highly regarded private client department which deals with all aspects of Wills, Probate, Trusts, Court of Protection and Powers of Attorney.

### We can advise you on:

- The preparation of a Will
- Obtaining Probate
- Executor Responsibilities
- Investment Advice
- Post Death Variations
- Inheritance Tax Planning
- Trusts
- Lasting Powers of Attorney
- Court of Protection Issues

The breadth and depth of the expertise of our team is such that we offer private individuals and families a tailor made personal service of the highest quality.

We provide specialist advice to manage the personal affairs of individuals at every stage of their life. Our experienced Solicitors have a sound understanding of the issues, which can affect your personal wealth and family relationships and will take all of the necessary steps to protect your interests every step of the way.

Contact Ian Oliver on: 01243 812421  
ian.oliver@georgeide.co.uk  
www.georgeide.co.uk

On your side

*Martin Steels Ltd*

*Optometrist & Contact Lens Practitioner*

# The LATEST in Eyewear Technology & Style

## OCT technology for sight protection



With a quick and simple OCT test we can examine the internal structure of your eye and can detect problems before they start affecting or damaging your eyesight

In many cases, the earlier the treatment the less likelihood of permanent eyesight impairment

Ask about OCT when you book your next eye test

## High quality & high fashion frames

We always stock a wide selection of the latest fashions and innovations  
Whatever your look, you'll find a match at Martin Steels

**RADLEY**  
LONDON

*Silhouette*

AUSTIN REED

**Chloé**

PORSCHE DESIGN

**R**  
RODENSTOCK

MICHAEL KORS

*Maui Jim*

**ck**  
Calvin Klein

  
**LACOSTE**

**SEIKO**



Saturdays: 9am - 1:00pm  
Weekdays: 9am - 5:30pm

4, The Old Flour Mill,  
Queen Street, Emsworth

[martinsteels.com](http://martinsteels.com)  
**01243 375141**

# Happy and **successful**



Nursery | Infants | Juniors | Senior | Sixth Form

Our children love to learn;  
see just how much at our  
**Open Morning** on  
Saturday 26 September 2015,  
from 9:30am

To find out more call

**023 9236 0036** | [www.pgs.org.uk](http://www.pgs.org.uk)



**THE  
PORTSMOUTH  
GRAMMAR  
SCHOOL**